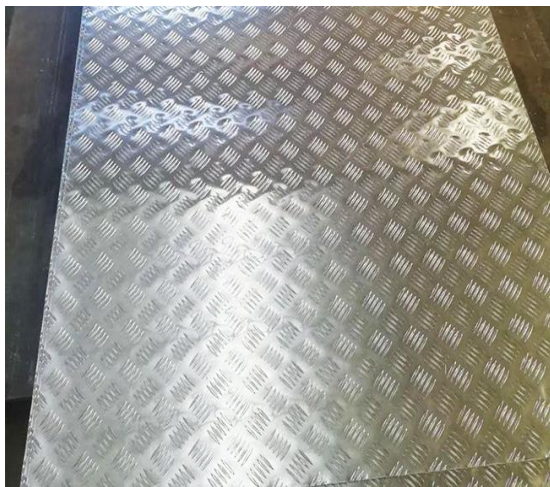
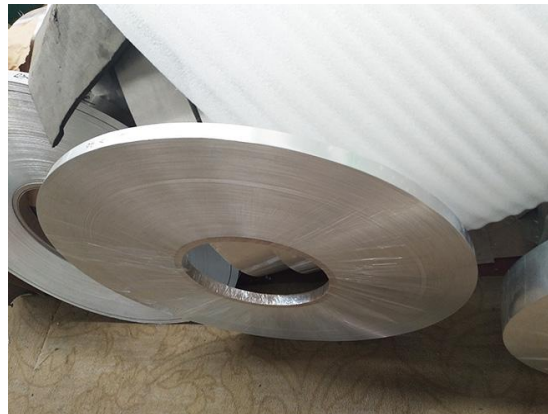


**Hongchang Aluminum** is a large-scale modern aluminum processing enterprise integrating processing, manufacturing and scientific research of aluminum sheets, aluminum circles, aluminum strips and aluminum foils. The company has two main production bases, one located in Gongyi City, Henan Province and Xin'an Industrial Cluster Zone, Luoyang City, Henan Province,



covering an area of 30,000 square meters. Hongchang Aluminum has more than 1,000 employees, 10 continuous casting production lines, more than 20 other large-scale processing equipment, and an annual output of 200,000 tons. The company's products cover 1-8 series of aluminum alloy products of different sizes, including automotive aluminum sheets, household aluminum foils, anodized aluminum sheets, mirror aluminum sheets,

packaging aluminum foils, aluminum foil PP covering materials, DOS oiled aluminum sealing sheets, cookware aluminum rings, marine aluminum sheets, double zero aluminum foils, aluminum pattern sheets and other products.



## Aluminum plate specifications:

Grade	Pure Aluminum: 1A99,1A97,1A95,1A93,1A90,1A80,1A80A,1070,1070A,1370,A1060,1050,1050A,1A50,1350,1145,1350,1A30,AA60,1200,1235,A1100
	2 Series: 2A01,2A02,2A04,2A06,2A10,2A11,2B11,2A12,2A13,2A14,2A16,2B16,2A17,2A20,2A21,2A25,2A49,2A50,2A70,2A80,2A90,2004,2011,2014,2014A,2214,2017,2017A,2177,2218,2618,2219,20242124
	3 Series: 3A21, 3003, 3103, 3004, 3005, 3105
	4 Series: 4A03, 4A11, 4A13, 4A17, 4004, 4032, 4043A,4047, 4047A
	5 Series: 5A01, 5A02, 5A03, 5A05, 5A06, 5B06, 5A12, 5A30, 5A33, 5A41, 5A42, 5A66,5005,5019, 5050, 5154A, 5754, 5056, 5356, 5456, 5082, 5182, 5086
	6 Series: 6A02, 6B02, 6A51, 6101, 6101A, 6005, 6006A, 6351, 6060, 6061, 6063, 6063A, 6070,6081,6082
	7 Series: 7A01, 7A03, 7A04, 7A05, 7A09, 7A10, 7A15, 7A19, 7A31, 7A33, 7A52, 7003, 7005,7020,7022,7050,7075,7475
	8 Series: 8A06, 8011, 8021,8079,8090
Temper	T3-T8,O-H112
Thickness	0.2-80mm; Customized according to customer requirements
Width	1000mm, 1219mm, 1240mm, 1500mm, 1800mm, 2000mm
Length	2000mm, 2438mm, 2500mm, 3000mm, 6000mm or as required
Strength	Soft/Mid-Hard/Hard etc.
Surface Treatment	Electroplating/Coloring/Drawing/Sandblasting/Polishing
Application	Rail transit, aerospace, machinery and equipment, petrochemical, construction, automotive aluminum, shipbuilding
Lead Time	Normally 7-15 working days after the receipt of 30% deposit, according to the quantity
Payment Terms	30% TT for deposit,70% TT /70% LC at sight balance before shipment
Price Terms	FOB, EXW, CIF, CFR
Packing	Standard Sea Worthy Package or according to customer's requirements

Chemical Composition (For Reference) (Common steel grade of aluminum)

Grade	Si	Fe	Cu	Mn	Mg	Cr	Zn	Ti	Other: Each	Other: Total	Al: Min.
1050	0.25	0.4	0.05	0.05	0.05	-	0.05	0.03	0.03	-	99.5
1050A	0.25	0.4	0.05	0.05	0.05	-	0.07	0.05	0.03	-	99.5
1060	0.25	0.35	0.05	0.03	0.03	-	0.05	0.03	0.03	-	99.6
1100	0.95 Si+Fe		0.05~0.20	0.05	-	-	0.1	-	0.05	0.15	99
1235	≤0.65		≤0.05	≤0.05	≤0.05	-	≤0.05	≤0.03	0.05	0.15	≥99.45
2014	0.5~1.2	0.7	3.9~5.0	0.4~1.2	0.2~0.8	0.1	0.25	0.15	0.05	0.15	remainder
2017	0.2~0.8	0.7	3.5~4.5	0.4~1.0	0.4~0.8	0.1	0.25	0.15	0.05	0.15	91.5-95.5
2024	0.5	0.5	3.8~4.9	0.3~0.9	1.2~1.8	0.1	0.25	0.15	0.05	0.15	remainder
3003	0.6	0.7	0.05~0.20	1.0~1.5	-	-	0.1	-	0.05	0.15	remainder
3004	0.3	0.7	0.25	1.0~1.5	0.8~1.3	-	0.25	-	0.05	0.15	remainder
3005	0.6	0.7	0.3	1.0~1.5	0.2~0.6	0.1	0.25	0.1	0.05	0.15	remainder
3105	0.6	0.7	0.3	0.3~0.8	0.2~0.8	0.2	0.4	0.1	0.05	0.15	remainder
5005	0.3	0.7	0.2	0.2	0.5~1.1	0.1	0.25	-	0.05	0.15	remainder
5052	0.25	0.4	0.1	0.1	2.2~2.8	0.15~0.35	0.1	-	0.05	0.15	remainder
5754	0.4	0.4	0.1	0.5	2.6~3.6	0.3	0.2	0.15	0.05	0.15	remainder
5083	0.4	0.4	0.1	0.4~1.0	4.0~4.9	0.05~0.25	0.25	0.15	0.05	0.15	remainder
5182	0.2	0.35	0.15	0.20~0.50	4.0~5.0	0.1	0.25	-	-	0.15	remainder
5251	0.4	0.5	0.15	0.1~0.5	1.7~2.4	0.15	0.15	-	-	0.15	remainder
6061	0.40~0.8	0.7	0.15~0.4	0.15	0.8~1.2	0.04~0.35	0.25	0.15	0.05	0.15	remainder
6082	0.70~1.3	0.5	0.1	0.4~1.0	0.6~1.2	0.25	0.2	0.1	0.05	0.15	remainder
7075	0.4	0.5	1.2~2.0	0.3	2.1~2.9	0.18~0.28	5.1~6.1	0.2	0.05	0.15	remainder
8011	0.50-0.9	0.6-1.0	0.10	0.20	0.05	0.05	0.10	0.08	0.05	0.15	Remainder
8021	0.15	1.2-1.7	0.05	-	-	-	-	-	0.05	0.15	Remainder
8079	0.50-0.3	0.7-1.3	0.05	-	-	-	0.10	-	0.05	0.15	Remainder

## Aluminum plate chemical composition