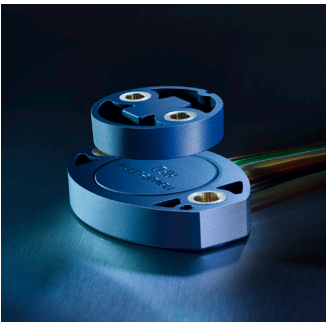
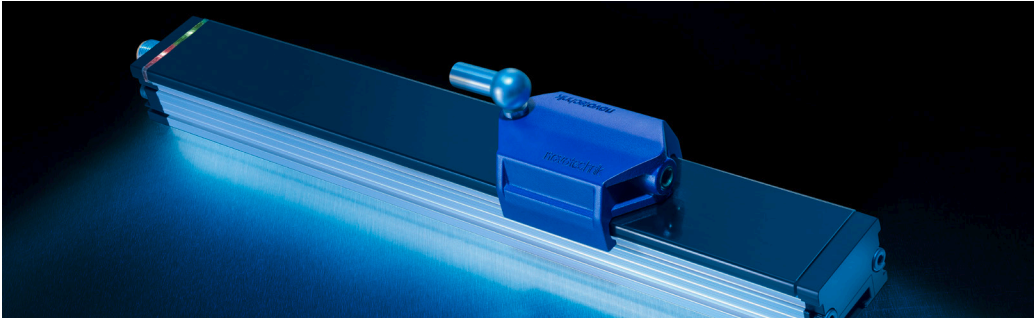


Linear Transducers and Rotary Sensors



Setting Standards

Novotechnik offers innovative sensor solutions in the field of linear and rotary measurement technology. Whether potentiometric, non-contacting or touchless - we have the right sensor for every requirement.

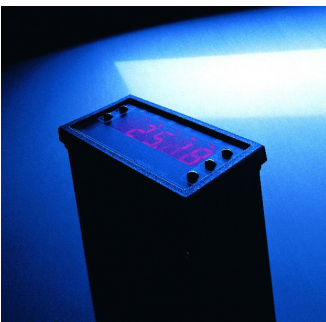


Position Transducers

Precise, reliable operation under harsh environmental conditions and at high positioning speeds.

Rotary Sensors

For economical and precise measurement of rotary motion. Both low torque and robust versions offer a wide variety of electrical interfaces.



Products

We offer linear and rotary sensors with a variety of sizes, technologies and features to best meet the requirements of our customers.

Whether in terms of mechanical design, environmental conditions, electrical interfaces, or other requirements, we would be happy to advise you in selecting the right sensor for your application.

Our sensors have unmatched flexibility. They are available with many signal types, single or redundant signals, single turn or multi-turn, compact size or robust metal housings, as complete devices or as components.

Signal Processing

Signal conditioners and user-friendly measuring devices with digital displays provide reliable transmission and adjustment of sensor signals.

Accessories

Signal conditioners, digital displays, cord sets, couplings, and mounting adapters simplify sensor installation and operation.

Automotive Products

Sensors and components developed specifically for automotive applications support optimized driving safety, provide data for intelligent engine power regulation, and allow smooth transmission control.



Novotechnik 1957, Ostfildern (Germany)



Headquarter 2021, Ostfildern (Germany)

For over 70 years Novotechnik has been setting the standard for development of linear and rotary measurement technology

1947 - 1983 Foundation and Expansion

Novotechnik was founded in 1947 as a trading company in Lindau (Lake Constance) by Mr. Wilhelm Offterdinger. In 1952 the company was relocated to Stuttgart-Sillenbuch.

The requirements of a rapidly growing sensor industry made it necessary to build an administration and production building in Ostfildern-Ruit in 1956.

In the following years Novotechnik developed into an internationally recognized company in the field of measurement and control technology.

1984 - 1989 Change and a New Beginning

In 1984 the Siedle Group acquired Novotechnik, providing additional resource and commitment to support growth. Novotechnik U.S.A. was founded in 1987 in Southborough, Massachusetts to achieve greater market coverage in North America.

1990 - 2009 Growth and Globalization

In 1990, an additional new building was built and the headquarters in Ostfildern was enlarged by an optimized, modern production building.

In 1990 the headquarters in Ostfildern were expanded to include an optimized, modern production building, and a new building was added.

The demand in China also called for greater market coverage, so that in 2006 we launched a Novotechnik Representative Office opened in Shanghai. Three years later the China representative office becomes part of the company and emerges as Novotechnik Sensors Trading Shanghai.

The enormously growth of the two and three-wheeler market in India led to a cooperation with Flash Electronics (Pune / India) in 2008. The products are designed by Novotechnik, the sensors are produced in India.



2010 - today Present and Future

As early as 1997, Novotechnik set new standards in the field of contactless sensor technology. So we focused on the physical property of the magnetostriction. Today we use this technology in a large variety of linear transducers.

In 2015, the contactless linear transducer range was expanded to include inductive technologies. Innovative products for highly dynamic positioning tasks for use in robust environments are a highlight of our linear sensor range.

Another milestone is the development of contactless multiturn angle sensors based on the GMR effect (Giant Magneto Resistive).

Setting standards for the future of Novotechnik we develop new technologies so that we will continue to focus on the strengths that made us the successful company that we are today.



Novotechnik Ostfildern (Germany), Production

This is Novotechnik

Over 200 people are employed by Novotechnik worldwide. At the the headquarters in Ostfildern (Germany) we develop and manufacture sensors and systems for linear and rotary measurement, for applications in the general automation and automotive industries. Branch offices in the USA and in China, as well as trading partners in more than 25 countries, provide international sales, service, and support.

A state-of-the-art production facility, and automated processes, deliver precision and quality. Analyzing the requirements of our customers around the world and offering appropriate products and services at competitive prices is our top priority. To achieve this, we continually invest in research and development. The training and further education of employees is also part of the standard.

Environment

Novotechnik pursues a strategy to include environmental and social aspects, in addition to technical requirements, in all business processes. Production equipment and resources are used in an environmentally friendly manner.

A worldwide network

Today, Novotechnik is represented in all of the world's major markets, with our own offices or through approved dealers. Thanks to this tightly-knit network we ensure that our customers can rely on first-class service and support - no matter where they are located.



Novotechnik U.S., Southborough - Partner for USA, Canada and Mexico



Novotechnik Sensors Trading (Shanghai) Co., Ltd., Partner for China and Vietnam

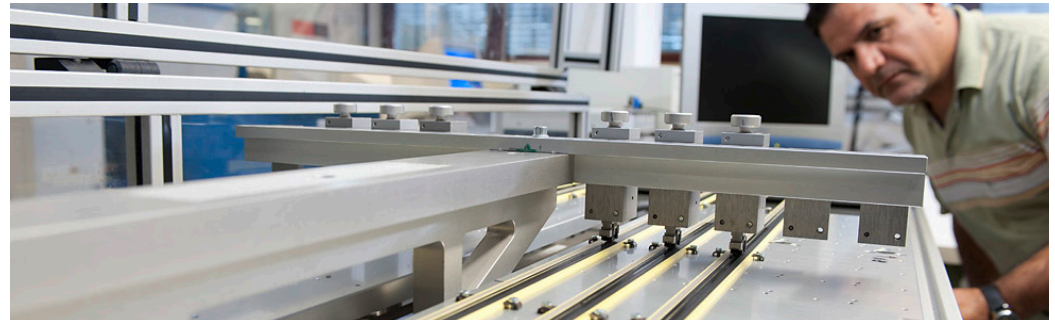


Quality

Our commitment to quality is demonstrated by the fact that we were one of the first companies in the world to have our operations certified to ISO/TS 16949. At Novotechnik our process begins with stringent and demanding specifications and ends with the inspection of every single product. This helps ensure that every product we manufacture performs exactly as designed.

Each batch of sensor components within the production and supply chain can be traced using the type identification on the sensor.

The expertise that we have gathered over more than 70 years is the foundation of our success, especially in safety-related applications.



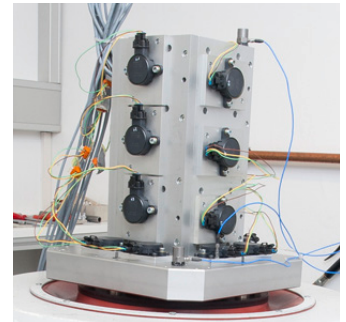
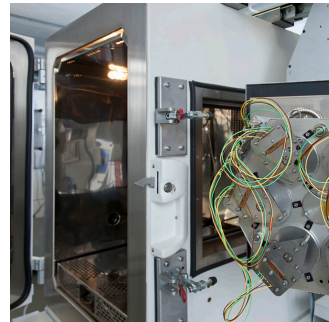
A well-equipped test facility ensures high quality

To guarantee that all products meet the quality standards and requirements of our customers, all components must pass strict testing procedures.

Our products are subjected to a wide range of environmental tests during product development. They have to work perfectly. Novotechnik has a well-equipped test facility with various testing machines to meet this commitment.

We can provide:

- EMC measurements
- Climate stress tests for temperature, humidity and temperature shock
- Mechanical stress, vibration, shock, and life tests.



All approval tests are carried out in accordance with current applicable standards. Non-standard tests are defined based on our extensive experience in sensor development using our own testing procedures.

As part of the company's certification to IATF 16949, our environment simulation laboratory is committed to strict compliance with all relevant standards.

For special tests that cannot be done in house we use only certified external laboratories.



Functional Safety

A primary goal of the new Machine Directive 2006/42/EC of the European Parliaments is Functional Safety of devices and systems. This limits the risk to the health and safety of human beings, harm to the environment, and damage to property. This is achieved by systematic error avoidance, error detection, and especially error control.

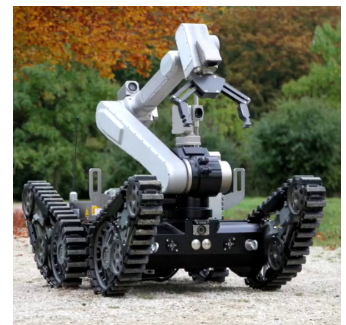
Today we find Novotechnik's innovative products in the safety-relevant systems of many industries:

- automation of production systems
- railway applications
- mobile equipment such as forklifts, construction, and agricultural machines
- medical technology
- automotive applications

We are happy to assist you with in implementing functional safety for your applications - either by selecting suitable products, or in the case of customer-specific sensors, by defining the system architecture.



To comply with applicable norms and standards, as well as the requirements of the market and our customers, Novotechnik used our existing quality management system (ISO 9001, ISO TS 16949) to implement a management system for functional safety.





© 03/2021

Subject to changes.



Representatives worldwide

Today, Novotechnik is represented in all of the world's major markets, by our own subsidiaries or approved dealers. Wherever our customers are, they can rely on first-class service and customer care thanks to this tightly-knit network.

Your contacts can be found <https://www.novotechnik.de/nc/en/service/representatives/>

Fascination with technology. Demand for precision and reliability. Solution-oriented thinking. Curiosity with new materials and production methods. A keen sense of service. These traits support our mission to continuously improve our measuring systems.

The greatest secret of our success, however, is our passion for devising the best possible solution for each individual customer and application. To this end, we will continue to focus on the strengths that made us the successful company we are today.

Logistics, construction, agriculture, medical, test and measurement, automotive... Leading equipment manufacturers from a multitude of industries place their trust in position transducers and rotary sensors from Novotechnik.

In the automobile industry alone, more than 50,000 of our sensor components are installed into new cars each and every day. Over 100 million throttle sensors and 75 million pedal sensors from Novotechnik have been installed in safety-relevant X-by-wire applications without field failures.