

COMPANY PRESENTATION 2022



Suzhou KrS Fine Products Co., Ltd.

A valuable machining parts manufacturer with automatic solution for global customers



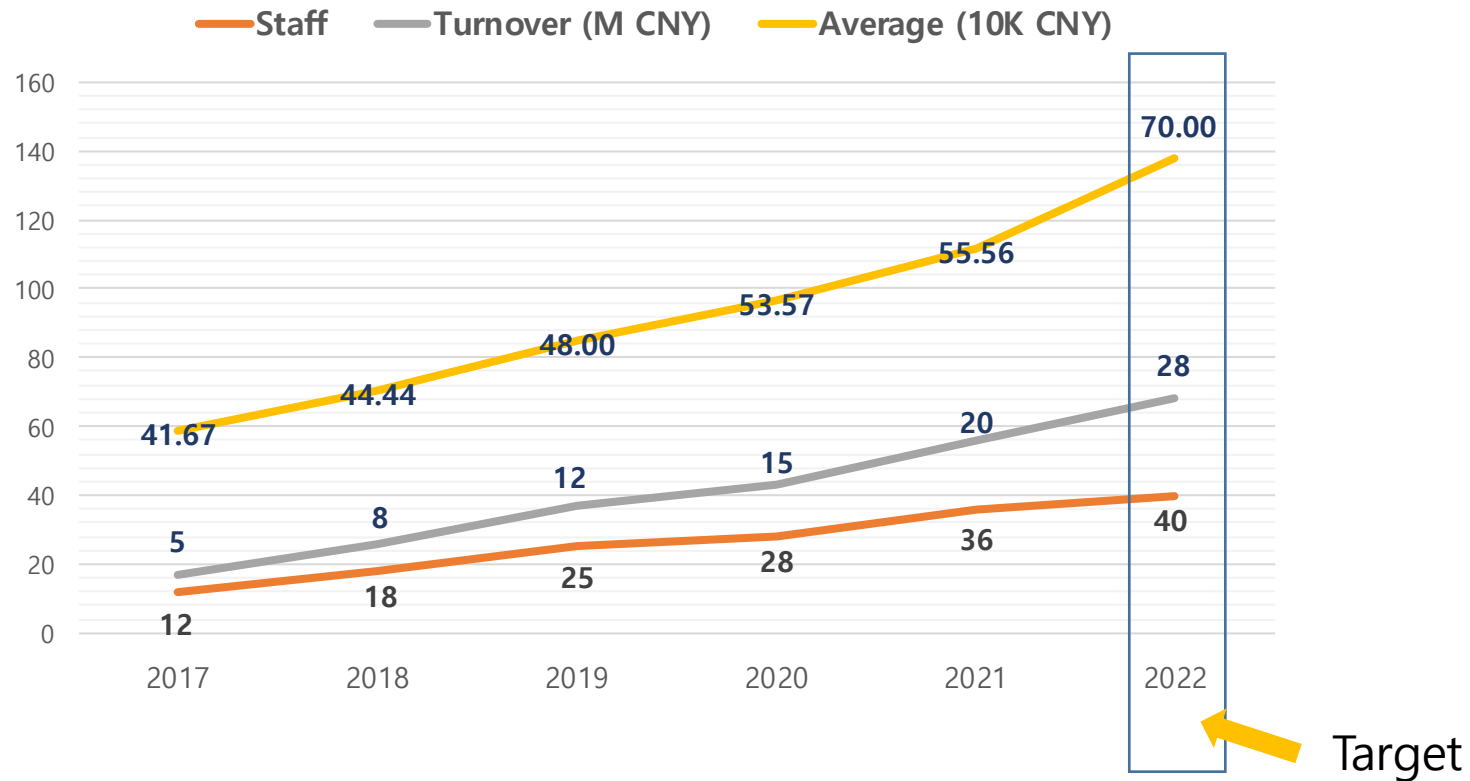
KrS was established in 2017, located in Taicang City, which is one of the most developed industrial area of Suzhou. Only 68 km to Shanghai brings us a very competitive logistic solution for customers all over the world.



As a young company in our own history, we are always facing the challenges, but we are not a new player in this industry, we can still achieve good target and stable growth during the past years, and we will keep on working in the most positive way to get a successful future.

We do hope we can create a new business cooperation with you and both of us will enjoy it.

Key Performance



Staff: 36
 Floor square: 2,400 m²
 Turnover: 20,000,000 CNY
 Export rate: 40%



Metal Fabrication

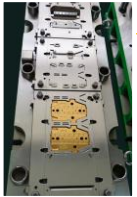
- Stamping
- Sheet metal (NCT)
- Tube bending
- Frame welding
- Assembly

Machining

- Milling
- Turning
- Polishing
- Line cutting
- Curving

Tooling

Fixtures



Stamping



Machining



Welding



CNC Punching



Bending



Coating



Laser Cutting



Insertion



Assembly

0 Metal Fabrication 0

- Stamping x5
- Laser cutting x1
- CNC punching x1
- Bending x3
- Welding x2
- Inserting x3



0 Machining 0

- CNC Milling x5
- CNC Turning x2
- Curving x1
- Line cutting x1
- Polishing x1



General Industry

Machinery
Automation
Energy



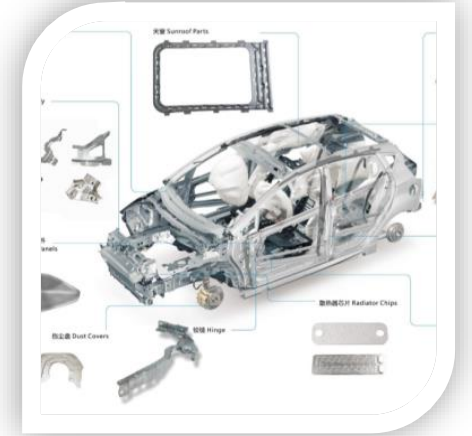
Medical Equipment

Monitor
Chassis
Housing



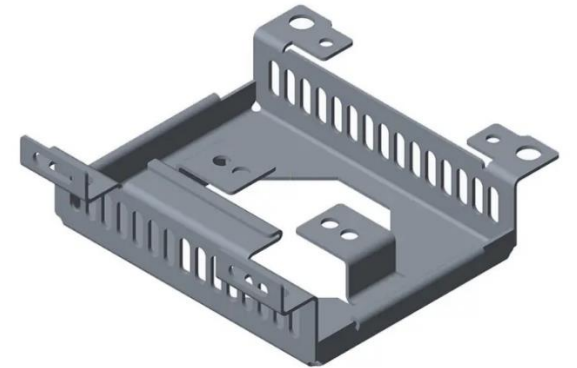
Electronics

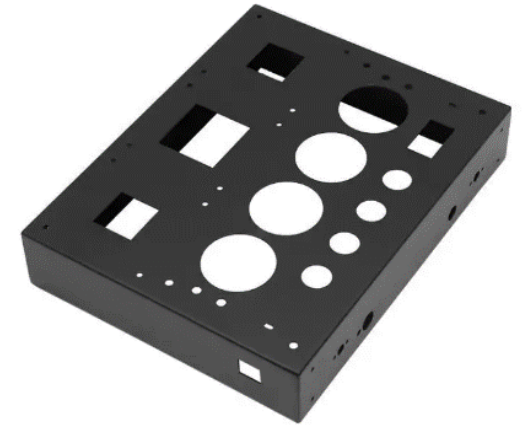
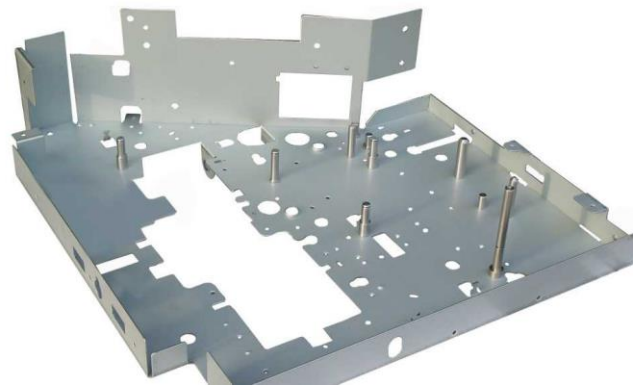
Cover
Bracket
Telecom



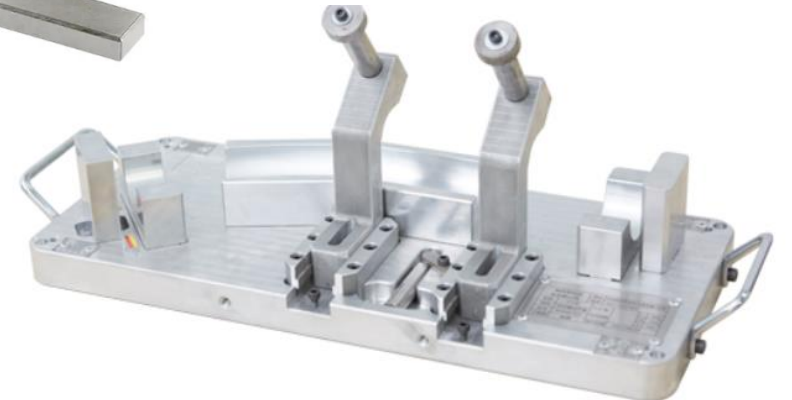
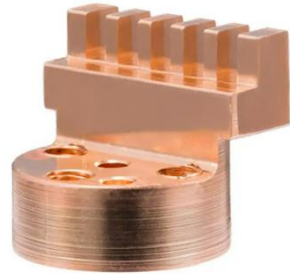
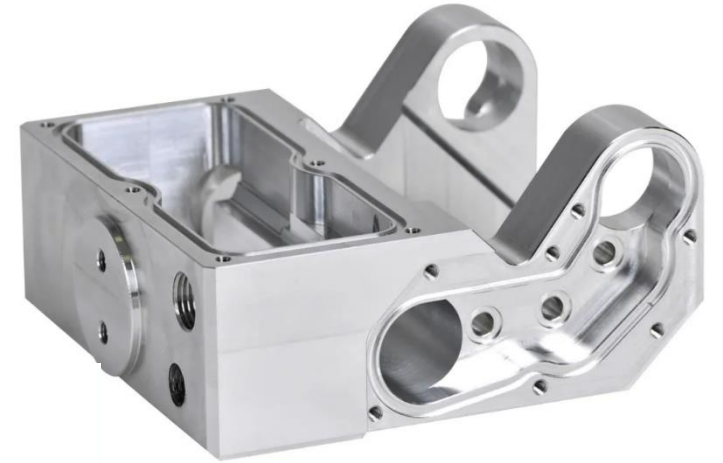
Automotive

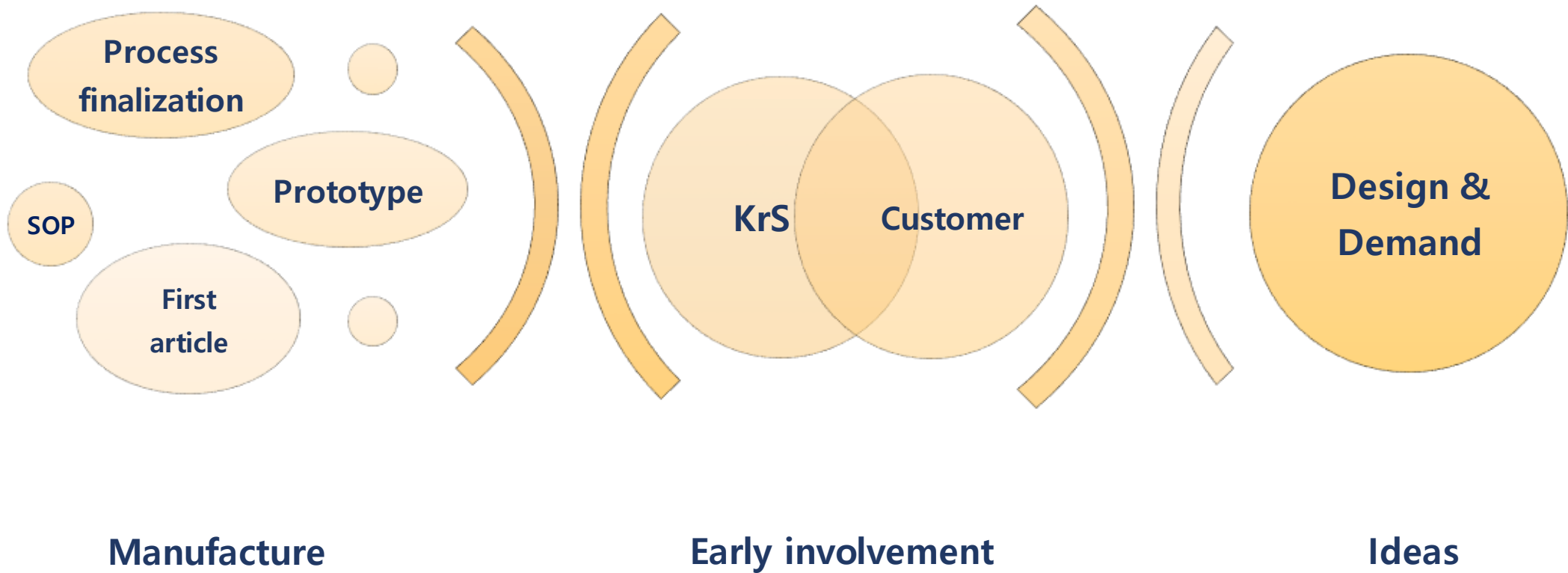
Battery
Sunroof
Carrier

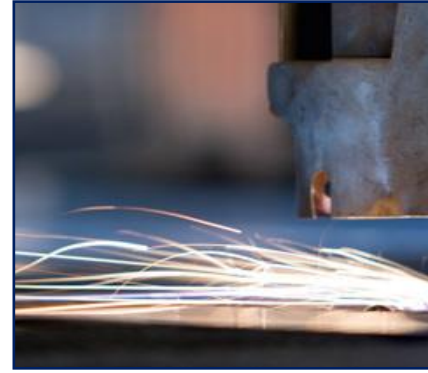
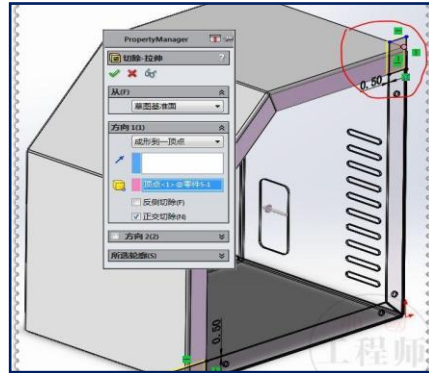
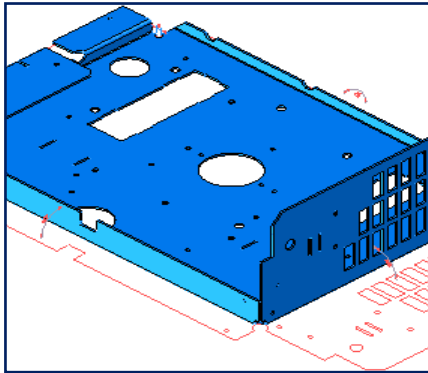


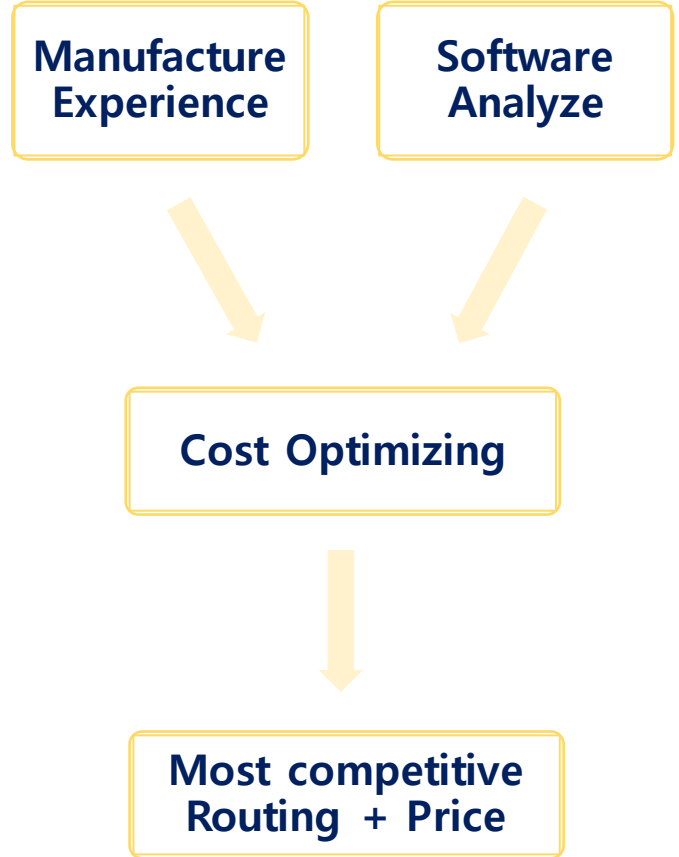
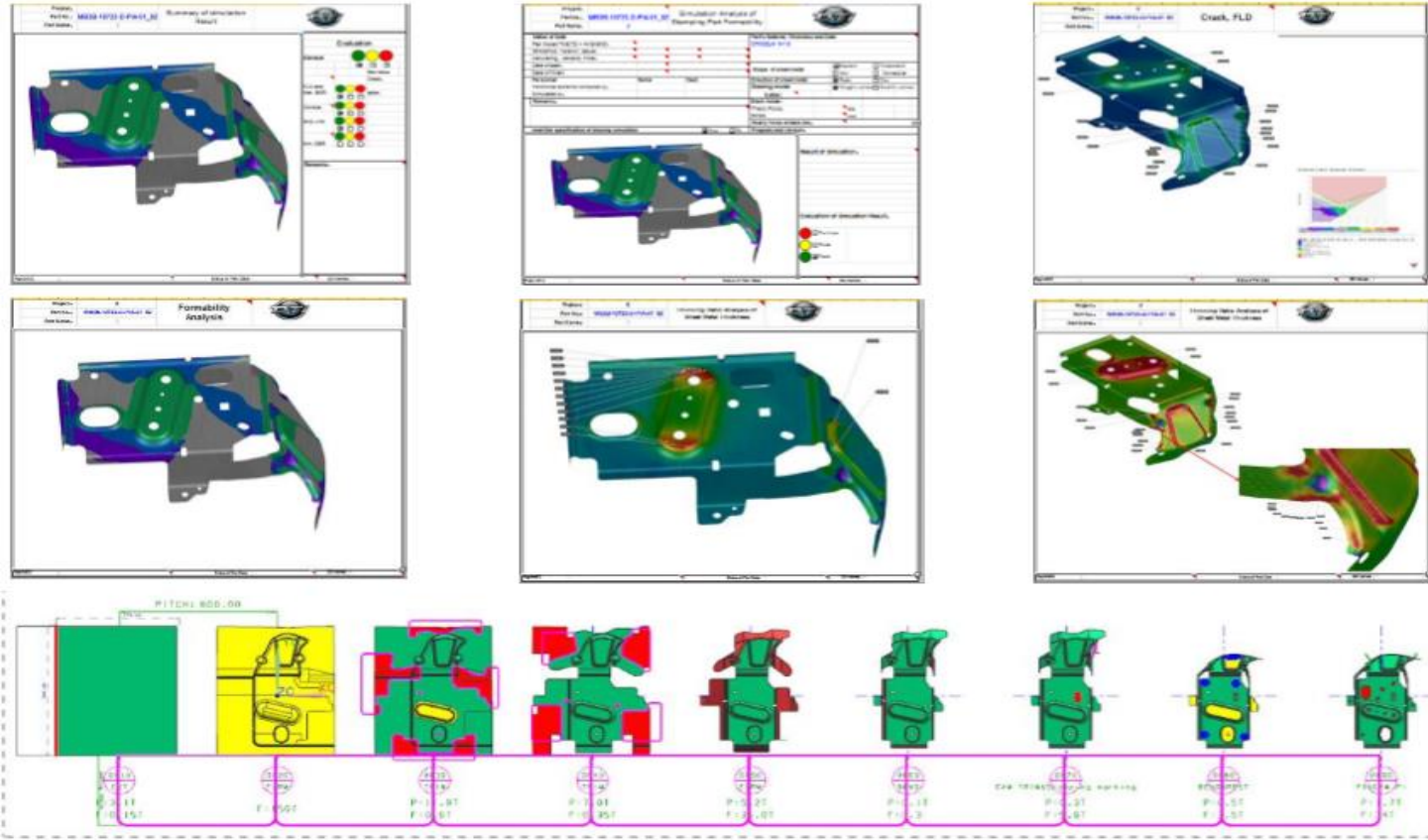












CERTIFICATE

Management system as per

ISO 9001 : 2015

(idt GB/T 19001-2016)

The Certification Body TÜV NORD CERT GmbH hereby confirms as a result of the audit, assessment and certification decision according to ISO/IEC 17021-1: 2015, that the organization

Suzhou KrS Fine Products Co., Ltd.

No. 98-2 Fly Horse Road, Liujiagang Twon, Taicang City,
Jiangsu Province, P. R. China

Unified Social Credit Code: 91320505MA1Q0F2E0F

operates a management system in accordance with the requirements of ISO9001:2015 and will be assessed for conformity within the 3 year term of validity of the certificate.

scope

Production of Sheet Metal Parts for the Electronics and Industry

Certificate Registration No. 33 110 1688 0096

Audit Report No. 3.5-CN0630/2021

Valid from 2021-07-06

Valid until 2024-07-05

Initial Certification 2018-07-02



Certification Body
at TÜV NORD CERT GmbH

Printing Address:
TÜV NORD Hangzhou Co., Ltd. Shanghai Branch
Registered Address: Room 1537, No.1256, 1256,
WanRong Road, Jing'an District, Shanghai, China, 200436
Office Address: Building 5, No.1, Lane 288, Kangning Road,
Jing'an District, Shanghai 200443 China
Tel: (+8621) 33196200

Issue Date: 2021-07-07

TÜV NORD CERT GmbH

Langemarckstrasse 20

45141 Essen

www.tuev-nord-cert.com



证书

基于管理体系

ISO 9001 : 2015

(idt GB/T 19001-2016)

认证机构 TÜV NORD CERT GmbH 公司特此证明，依据 ISO/IEC 17021-1:2015 标准进行的审核、评估和认证决定的结果，该组织

苏州氮晟精工制品有限公司

中国江苏省太仓市浮桥镇刘家港飞马路98-2号

统一社会信用代码: 91320505MA1Q0F2E0F

采用符合 ISO9001:2015 标准要求的管理体系并且在本认证的 3 年有效期内将对符合性进行监督。

范围

用于电子和工业设备钣金件的生产

证书编号: 33 110 1688 0096

审核报告编号: 3.5-CN0630/2021

有效期起始日 2021-07-06

证书有效期至 2024-07-05

初次认证日期 2018-07-02



之验证机构
at TÜV NORD CERT GmbH

打印地址:
杭州氮晟质量认证服务有限公司上海分公司
注册地址: 中国上海市静安区万寿路 1256、1258 号 1537 室,
邮编: 200436
办公地址: 中国上海市静安区康宁路 288 弄 1 号 (5 号楼)
邮编: 200443
电话: (+8621) 33196200

签发日期: 2021-07-07

TÜV NORD CERT GmbH

Langemarckstrasse 20

45141 Essen

www.tuev-nord-cert.com



0 General Dimensions 0

Completed ready with all necessary measuring tools for overall dimensions



0 CMM 0

CMM big sized
Max. 1000x800mm



- Height gauge
- Thickness detector
- Push-pull test
- Torque test
- Salt-spray test
- CMM

Experienced & Skilled

Industry, market, engineering,
cost structure...

Fast Quotation

TR feedback within 1 WD
Quotation + 2 WDs

Short Lead Time

Small batch within 2 CWs
Series batch within 4 CWs

Fast Reaction

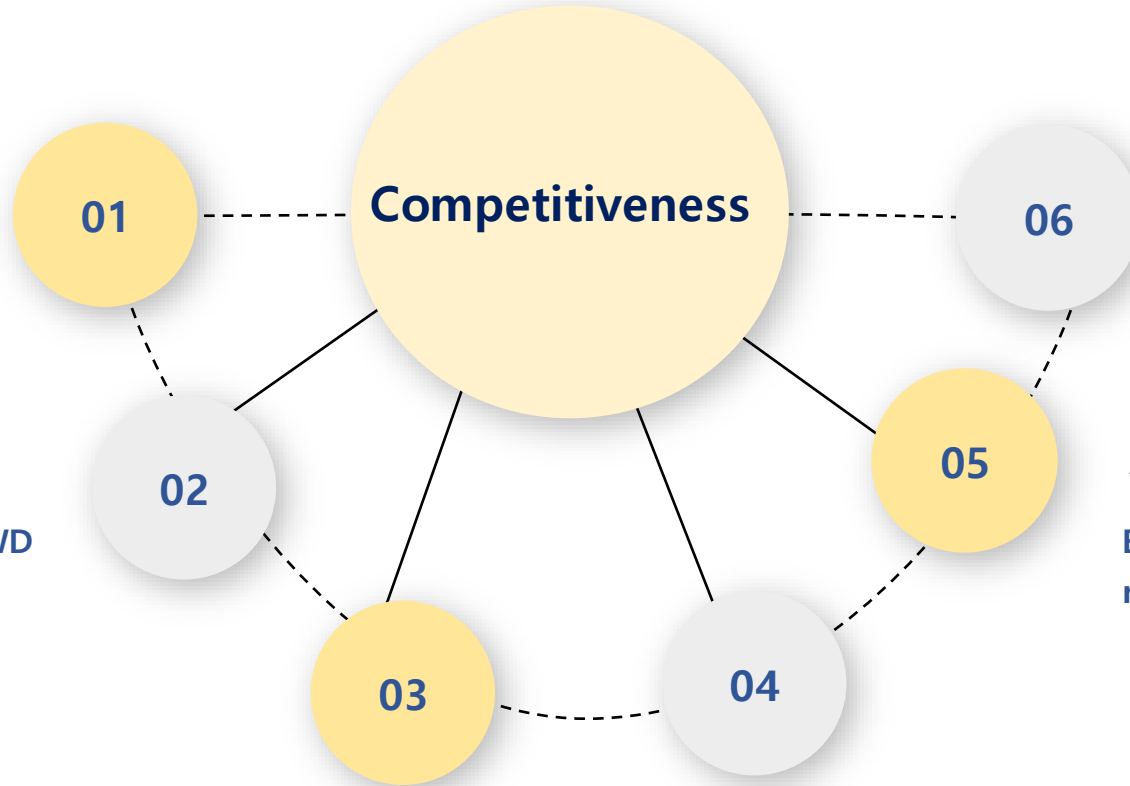
Immediate & effective solution made,
on-site supporting for emergencies

Process Support

Simplify internal process,
more flexible

All-round Service

Based on customer satisfaction,
result oriented KPI strategy



Outstanding customers requires for outstanding suppliers, we treasure each cooperation either the success or the lesson-learn, it will lead us to a better future.



KUKA



SIEMENS
Ingenuity for life



KRONES



UNITED 联影
IMAGING



SIASUN 新松



MNC Lighting
米尼照明



TAILI
泰力电器

**Many Thanks
for your kindly
attention!**



Suzhou KrS Fine Products Co., Ltd.

A valuable machining parts manufacturer with automatic solution for global customers

Kerwin Wang
Krs_FP@vip.163.com