



HISTORY

1973

Establishment of Mostostal Siedlce

1997



Mostostal Siedlce debut on the Warsaw Stock Exchange

1999

Polimex-Cekop holds a majority stake in Mostostal Siedlce SA

2004

Merge of Polimex-Cekop SA and Mostostal Siedlce SA – establishment of Polimex-Mostostal Siedlce SA



2006



Change of company name into Polimex-Mostostal SA

2009

Changing of company structure from multi-division into segments organized. Creating of Production Segment, start of restructurisation

Start up of new workshop facility in Siedlce including paintshop

2012



2015

Spin-off the Steel Structures Division from Polimex-Mostostal SA. Start of operation as Mostostal Siedlce Limited Partnership

Creating of Integrated Part of Company (IPC) which includes Steel Structures Division in Siedlce

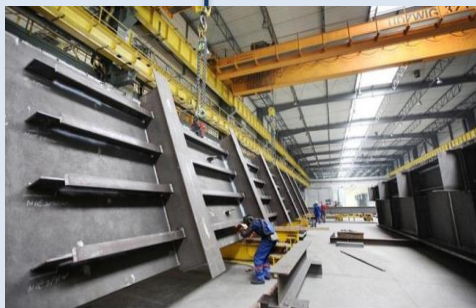
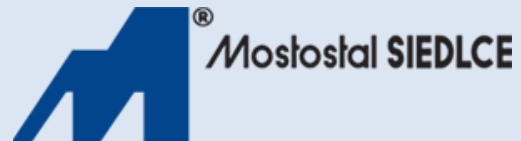
2016



ORGANIZATIONAL STRUCTURE



COMPANY PROFILE



STEEL CONSTRUCTIONS



**CORROSION PROTECTION -
HOT DIP GALVANIZING AND
PAINTING**



PLATFORM GRATINGS

**Mostostal Siedlce is one of the largest
manufacturer of steel structures in Poland.**

WORKSHOP IN SIEDLCE

Workshop area:

- Total surface - 34,5 ha
- Production halls - 10,3 ha

Employees - 2 022 people

Max. bridge crane lifting capacity - 64 tons

Fabrication capacity per month:

- 2 000 tons - steel structures
- 2 500 tons - platform gratings
- 8 000 tons - galvanizing service



FINANCIAL RESULTS IN 2018

Sales	549 MLN PLN (about 130 MLN EUR)
Net income	10 MLN PLN (about 2,4 MLN EUR)
Current assets	187 MLN PLN (about 44 MLN EUR)
Ebitda	32 MLN PLN (about 7,6 MLN EUR)
Share in export	About 53%
Export of steel structures	196 MLN PLN (about 46 MLN EUR)

FABRICATION CAPABILITIES



Workshop in Siedlce

- Laser, oxygen and plasma cutting
- Hand, mechanised welding
- Shot- & Sandblasting
- Machining, Milling
- Tooling metallurgical profiles
- Welding of steel girders
- Hole drilling in profiles and steel sheets
- Hole cutting in profiles and steel sheets

MODERN MACHINERY PARK



A modern line for production
for welded profiles



Milling machine



Laser Cutting Machine for plates



Two portal cutting machines
for plates



Universal Edge Beveller



CNC line for drilling and thermal
cutting

OFFER STEEL STRUCTURES

Mostostal Siedlce
manufactures
steel structures for:

- power plants
- waste to energy plants
- petrochemical industries
- metallurgy
- chemistry
- mining sector
- telecommunications
- road engineering
- public buildings
- workshops and storage halls

Products include:

- processing plant constructions with equipment
- silos
- cranes
- support construction of processing lines and pipelines offshore
- offshore structures
- pallets
- containers
- racks

STEEL STRUCTURES – REALIZATIONS

POWER PLANTS



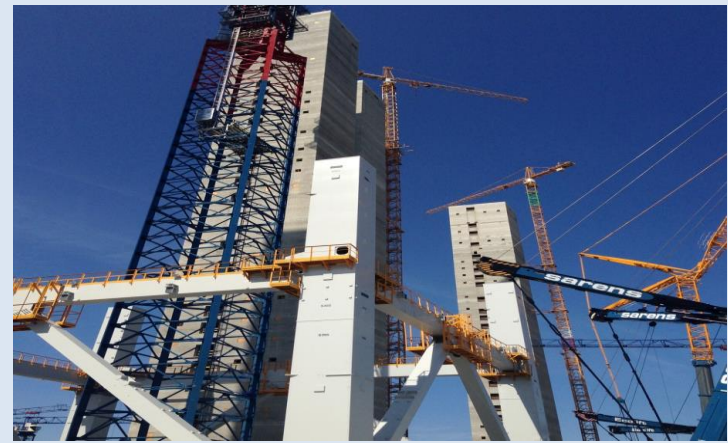
Kozienice Coal Fired Power Plant, Poland
16 000 tons of steel structure



Ferrybridge Waste to Energy Plant, United Kingdom
6 500 tons of steel structure



Turów Power Plant, Poland
7 000 tons of steel structure



Opole Power Plant, Poland
7 000 tons of steel structure

STEEL STRUCTURES – REALIZATIONS

RAFINERIES



LOTOS Refinery, Poland
3 000 tons of steel structure



PKN ORLEN Refinery, Poland
3 500 tons of steel structure



Petrochemistry Kollsnes, Norway
300 tons of steel structure



Petrochemistry Libya, Africa
600 tons of steel structure

STEEL STRUCTURES –REALIZATIONS PUBLIC USE FACILITIES



Steel structure cupola over traffic circle
in Katowice, Poland 240 tons of steel structure



Trade Fair Centre, Exhibition Hall Kielce, Poland
930 tons of steel structure



Vistula Stadion in Cracow, Poland
840 tons of steel structure



Legia Stadion in Warsaw, Poland
2 635 tons of steel structure

STEEL STRUCTURES –REALIZATIONS BRIDGES



Bridge M14, Bielsko Biała – Żywiec,
Poland, 3 682 tons of steel structure



Flyovers ES09 on the way S69, Żywiec -
Bielsko Biała, 9 665 tons of steel structure



Bridge in Sucha Beskidzka, Poland,
800 tons of steel structure



Bridge on the section of E6 motorway,
Norway, 140 tons of steel structure

STEEL STRUCTURES – REALIZATIONS

PRODUCTIONS AND STORAGE HALLS



**HDF/MDF manufacturing Plant,
Poland,
1 750 tons of steel structure**



**Hall, Denmark, 1 750 tons of steel
structure**



**Hall Baglan, United Kingdom,
2 300 tons of steel structure**

STEEL STRUCTURES – REALIZATIONS OFFSHORE



Transformer platform for the Wind
Power Plant, Denmark



Pipe bridge, Ormen Lange project, Norwegian Sea



Components of steel structures
for wind turbines (steel nacelle)

STEEL STRUCTURES – REALIZATIONS RAILWAY INDUSTRY



Freighter Type Switcher

STEEL STRUCTURES – REALIZATIONS

PALLETS



Steel Frames for cylinders



Steel pallets for gas cylinders



Container

STEEL STRUCTURES – REALIZATIONS

NON - TYPICAL OBJECTS



Steel structure cupola over traffic circle in Katowice, Poland 240 tons of steel structure



Strasbourg Railway Station facade structure 400 tons of steel structure



OFFER PLATFORM GRATINGS

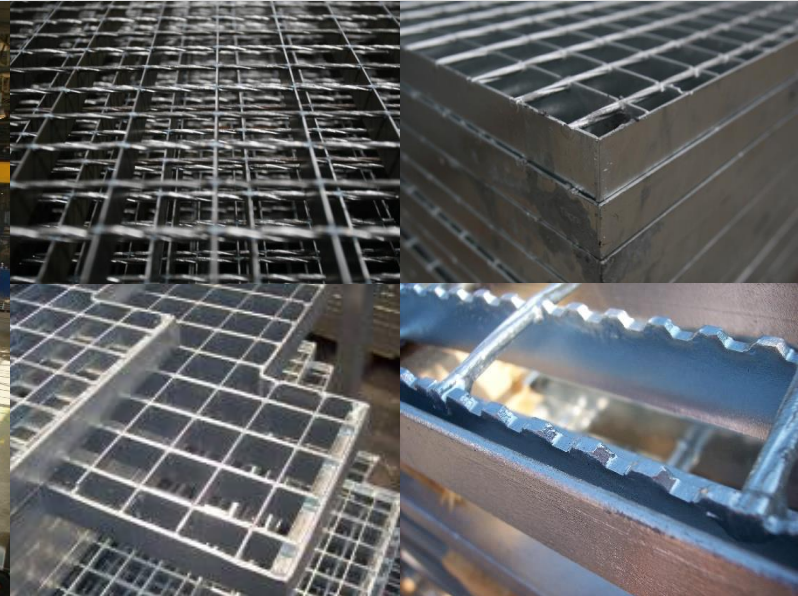
- Welded gratings
- Press locked gratings
- Modern machinery park
- Total capacity: 2 500 tons monthly

FABRICATION CAPABILITIES OF GRATINGS PRODUCTION

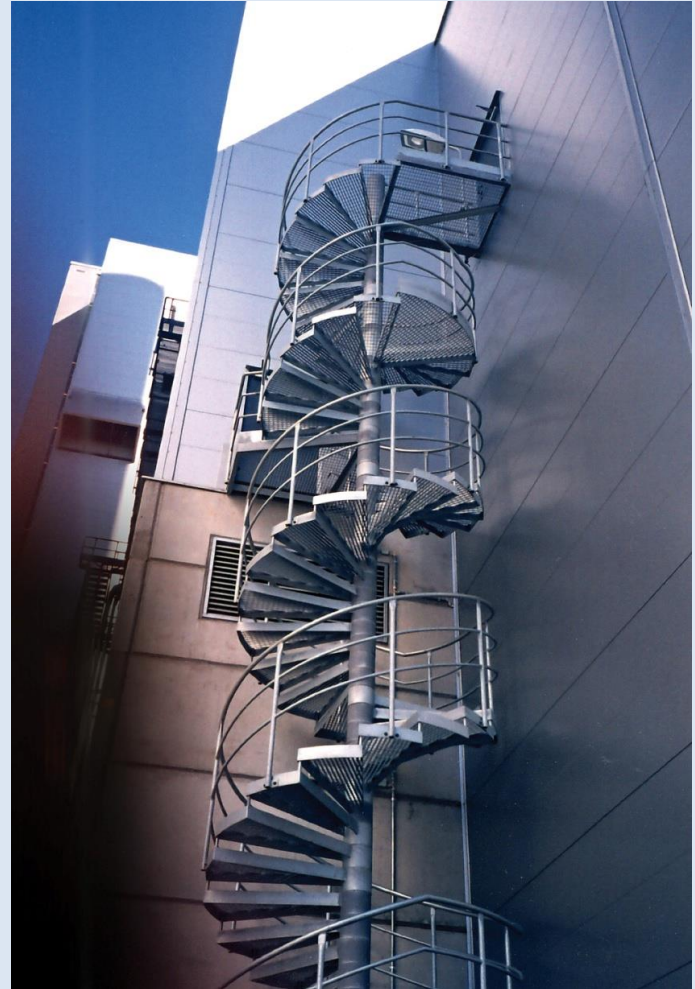
Mostostal Siedlce ensures comprehensive engineering support during the manufacturing process, delivery and assembly of platform gratings.

Gratings have plenty of possible applications. The most popular ones include:

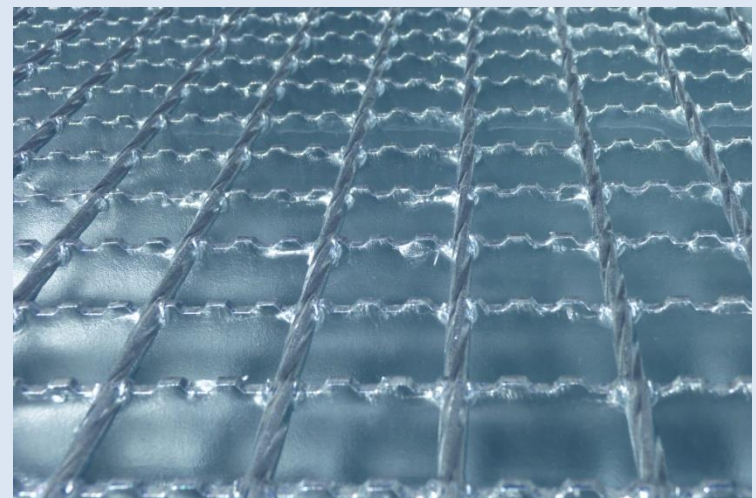
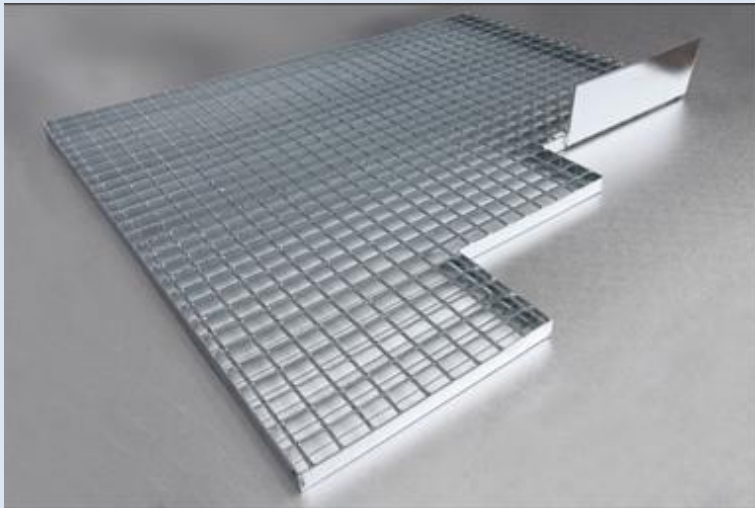
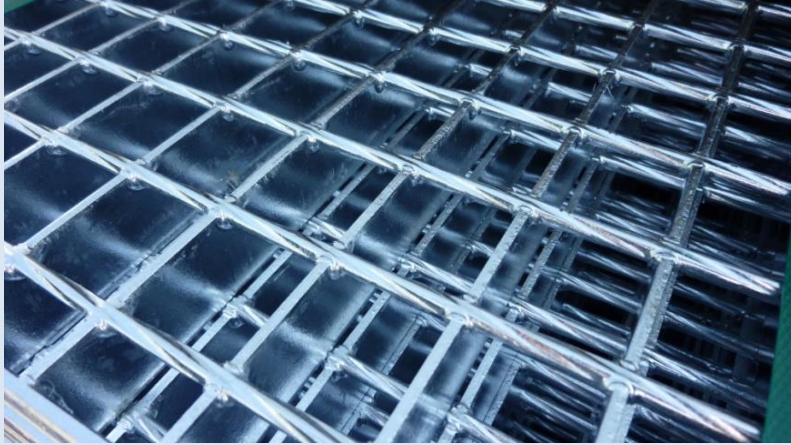
- platforms in production plant
- gantry platforms
- pipelines
- container routes
- pavements and pedestrians precinct



PLATFORMS AND SPIRAL STAIRCASES



PLATFORM GRATINGS



OFFER CORROSION PROTECTION

- Hot dip galvanizing
- Duplex system
- Hydrodynamic painting
- Zinc metal spraying
- Total capacity: 8 000 tons of galvanized steel per month

FABRICATION CAPABILITIES

Mostostal Siedlce specializes in the application of anti-corrosion protection on steel constructions by hot-dip galvanizing.

Three technological lines for hot-dip galvanizing equipped with baths. Max. dimensions of components for galvanizing (length x width x depth):

- 12 500 x 1 700 x 2 900 mm (max. 4 tons per item)
- 8 500 x 1 600 x 2 850 mm (max. 6 tons per item)
- 6 500 x 1 700 x 2 900 mm (max. 4 tons per item)



HOT DIP GALVANIZING



PAINTING

Paint coating plays a significant role in commonly applied technologies of steel anticorrosion protection. Its durability does not match the zinc coating, however due to lower price at the moment of structure completion, it is a common choice of investors as a method of anticorrosion protection.



We propose you professional painting protection using the best in class paints applied using hydrodynamic method. We cooperate with well-known national and foreign paints manufacturers such as: Lankwitzer, Nobiles, Hempel, SIGMA, Polifarb Oliva, Rembrandtin, Feidal, CHING.

PAINTING



WORKSHOP IN RUDNIK

Workshop area:

- Total surface – 7,25 ha
- Production halls – 1,65 ha

Employees – 294 people

Max. bridge crane lifting capacity – 64 tons

Fabrication capacity per month:

- 700 tons – steel structures
- 50 tons - painting service



OFFER STEEL STRUCTURES

Products include:

- Tanks and silos:
 - pressure tanks of various types used in power industry including tanks for liquid sulphur and heavy oils,
 - tanks for fluids and gases used in agricultural, food and chemical industries
 - silos of various capacity for bulk materials: grain, feed, sugar
 - heat exchangers
- Pipelines
- Ducts, heaters
- Supporting structures: bridges, gangways and walkways
- Halls



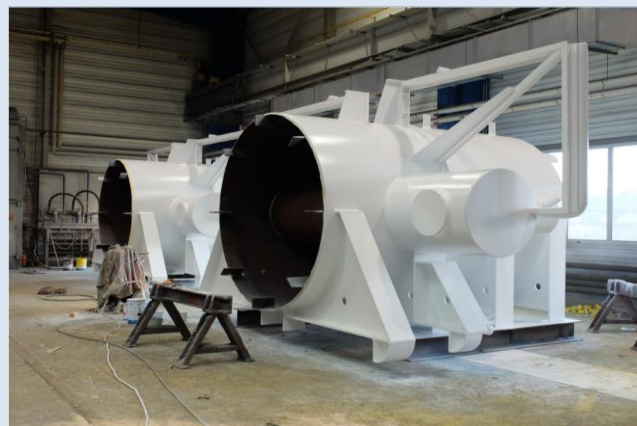
WORKSHOP IN RUDNIK – REALIZATIONS



Drilling Tower Lotos, Poland
339 tons of steel structure



Support structure of the boiler Allborg, Malta
759 tons of steel structure



Heads for docking vessels Plauen,
51 tons of steel structure

Mostostal Siedlce operates in accordance with the Integrated Management System based on:

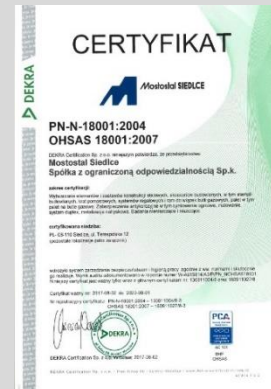
PN EN ISO 9001 Quality management system
 PN EN ISO 14001 Environmental management system
 PN N 18001, OHSAS 18001 Occupational Health and Safety management system
 PN EN 1090-1 Requirements for conformity assessment for structural components
 PNEN ISO 3834-2 Quality requirements for fusion welding of metallic materials -- Part 2: Comprehensive quality requirements
 PN EN 15085-2 Welding of railway vehicles and components
 CWB Certification of Companies for Fusion Welding of Steel (CSA Standard W47.1)

Mostostal Siedlce also puts a big focus on Health, Safety and Environment.
 Our HSE policy makes it mandatory for everyone who works for the company to adhere strictly to HSE performance standards.

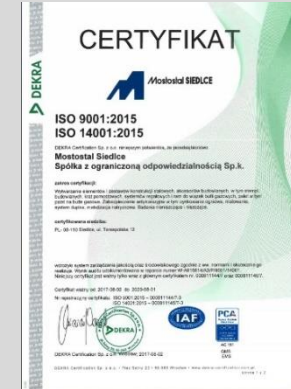


HSE

Certificates



OHSAS 18001



**PN-EN ISO 9001 ,
PN-EN ISO 14001**

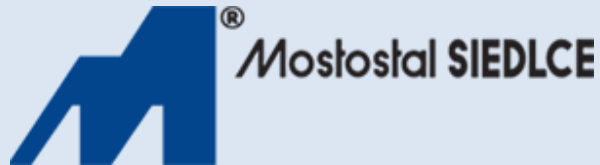


**Certification of
Companies for Fusion
Welding of Steel**



EN 15085-2

CONTACT



Mostostal Siedlce

Spółka z ograniczoną odpowiedzialnością Sp. k
PL 08-110 Siedlce

ul. Terespolska 12
tel.: +(48) 25 643 95 47
fax: +(48) 25 643 96 57
e-mail: konstrukcje@polimex.pl
www.mostostal.siedlce.pl

Steel Structures Production Plant in Rudnik

37-420 Rudnik
ul. Stalowa 5
tel. +(48) 15 876 10 58
tel. +(48) 15 876 10 43
e-mail: rudnik@polimex.pl

Sales Departments

Steel Structures Sales Department

Mr. Marek Zatorski - Head of Sales Department
E-mail: konstrukcje@polimex.pl

Gratings Sales Department

Mr. Paweł Jasiński - Head of Sales Department
E-mail: pawel.jasinski@polimex.pl

Corrosion Protection Sales Department Mrs.

Magda Kołak - Head of Sales Department
E-mail: magda.kolak@polimex.pl