

GEDA® 1500 Z/ZP



Two devices in one: material hoist and transport platform

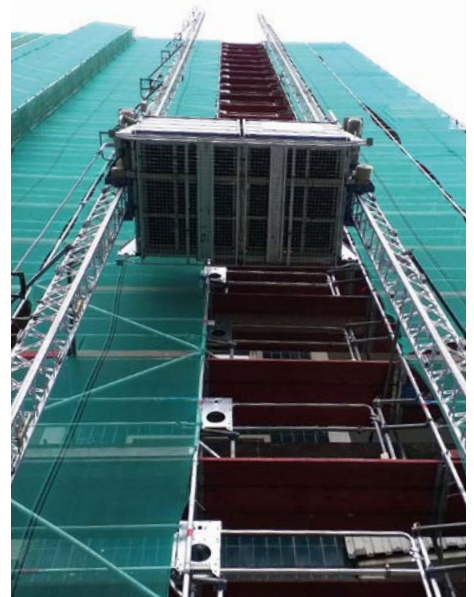
Flexible – the right platform variant for any construction site situation

GEDA UNI-X-MAST system

Spacious platform for bulky and heavy construction materials

Automatic lubrication device as a standard









GEDA 1500 Z/ZP

The GEDA 1500 Z/ZP has two separate control systems and can be used either as a material hoist only or as a transport platform for passengers and materials. The transport platform control with a speed of 12 m/min is activated for transporting passengers and materials. For transporting construction materials only, the device is switched to the material hoist mode with a lifting speed of 24 m/min.

One device, numerous possibilities: the double-mast GEDA 1500 Z/ZP transport platform ideally adapts to virtually any conditions on site thanks to the convenient modular system with 14 different platform versions and different load capacities. The large loading platform variants of the GEDA 1500 Z/ZP offer plenty of space – even for transporting particularly heavy and bulky materials.

Despite high load capacities of up to 2000 kg, the proven double mast system ensures a stable and smooth travelling motion.

Technical data:

| | |
|---|--|
|  | 2000 kg 7 persons |
|  | 100 m |
|  | 12/24 m/min |
|  | 2 x 3.0/6.1 kW 400 V/50 Hz/32 A |