

IMPAtouch® ... the more intelligent glass

patented capacitive sensor technology on glass

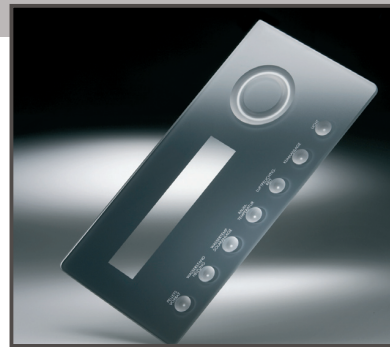


Technology

- Glass acts directly as basic material for the electronics
- Printed conductor line structure by means of conductive silver
- Burning-in and toughening process are carried out in one production step homogeneous fusion between conductive line and glass
- Assembling of the electronic units directly on the glass

Mechanical characteristics

- Scratch-resistant surface and high mechanical stability
– **toughened safety glass** –
- Suitable for outdoor application (UV- and temperature-resistant)
- Simple cleaning (hypoallergenic and hygienic)
- Ceramical and UV-resistant screen printing colours



Ecological advantage

- Energy saving during the manufacturing process
- High durability, as there is no material abrasion

Design variety

- Realisation of high-class individual designs (Logos, service units and so on)
- Service orientated layout of the surface for example finger tip buttons, slider (controller), embossed printing



All this you will get from one source, in one package

From development to glass production and assembling until the point of delivery of completely finished and mounted Plug&Play units.



Irlbacher Blickpunkt

Glas GmbH
Bahnhofstraße 12
D - 92539 Schönsee
www.irlbacher.com

Contact:

Sales department
Thomas Lang
Phone: ++ 49 (0) 96 74 / 92 00 - 155
E-mail: t.lang@irlbacher.com