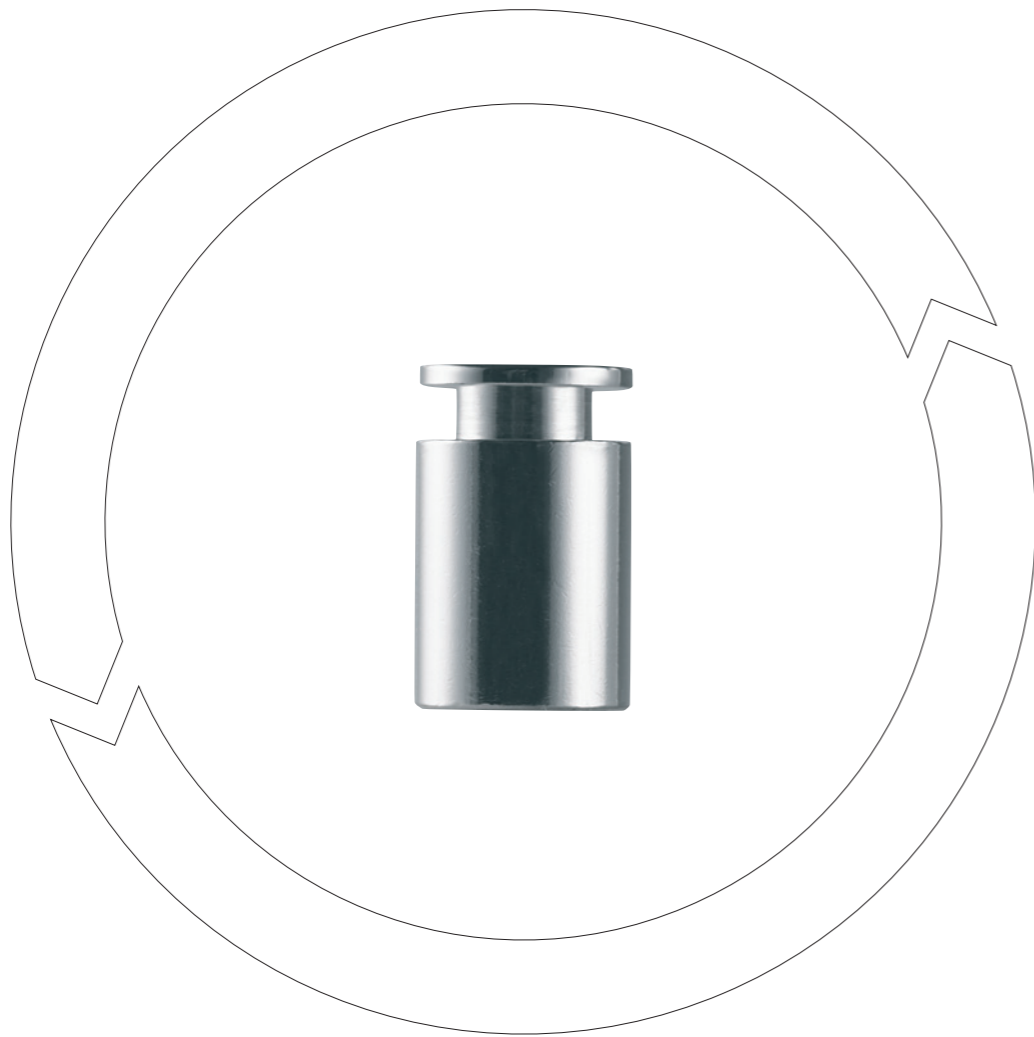




Drehtechnik Sauerland

Fastening turned parts
– With a system –



“Only than when you have the smallest detail in your grasp,
you are able to work with precision.”
Niki Lauda



Björn Kaldewei, Managing Director of KS Drehtechnik Sauerland and Corinna Kaldewei, Distribution.

25 years of Know-how for precise turned parts: Now we are KS Drehtechnik Sauerland!

Yes, we've got a new name, and that's a good thing too! We changed our company name, but the Know-how, the people and the location stays the same. And with that, a new era for the family owned company KS Drehtechnik Sauerland, Illingheimer Straße 33 in Sundern-Amecke in it's over 25-year long company history starts.

With the “Know-How” that has been developed in this certified company over the years, and the qualified workforce as well as the modern CNC machines, we are there for you. It doesn't matter if you're using our standard range of products or are searching for solutions which we are able to develop and manufacture for you.

We stand with our names for certified quality, reliability and precision turned parts from our production. All products, which leave our company grounds, are “made in Sundern”. As one of the few companies in this sector we don't deal with import products, but rather manufacture ourselves. We offer you the best quality in turned parts using the highest technical level, and only high quality materials.

We can do it, just asks us!

- Fastening turned parts – with a system
- Lathed and milled parts – with precision
- Oil drain valves – with safety


Björn Kaldewei

In 1988 the company was founded with the divisions in Turned and milled parts as well as oil drain valves.

Extension of the Corporate portfolio to the business fastening turned parts.

2000 the entry into the international market followed.

2014 change of name to KS Drehtechnik Sauerland; Expansion of the company's location in Sundern-Amecke to over 6.000 square meters of production and management area.

1988

1990er

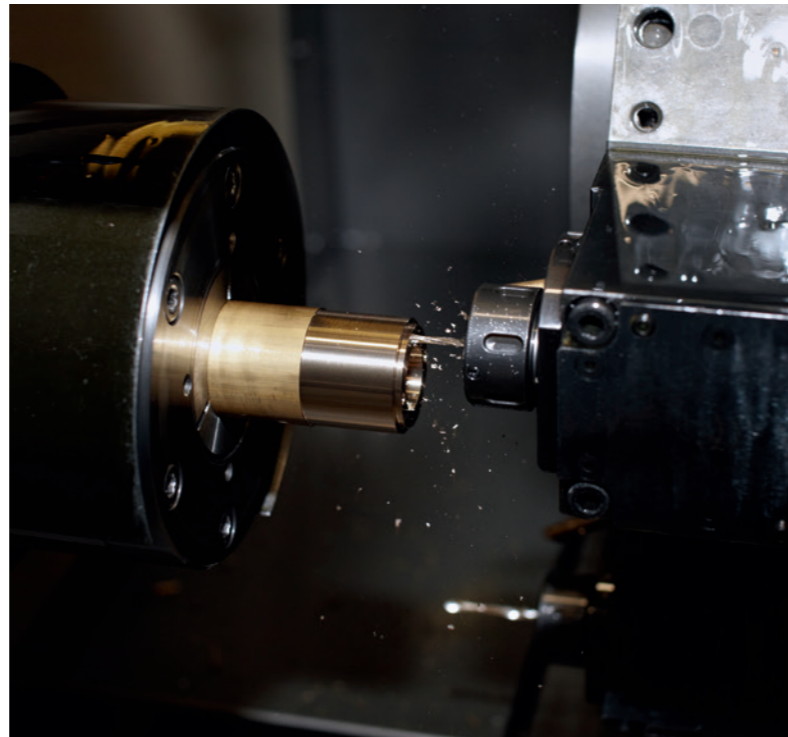
2000er

2014

Own production – made in Sundern

All products that you will find in this catalogue are manufactured by us. At the companies base in Sundern we manufacture precision turned parts out of brass, aluminium, plastic, steel and stainless steel. The in-house production is at the heart of this qualified company. Due to this we are able to produce your desired products fast and on an individual basis.

Using modern CNC technology we produce oil valves for the automotive industry and their supplier, precision turned parts for the lighting, appliances and electronic industries, as well as fastening turned parts for exhibition construction, advertising and other design orientated industries.



Best Quality

For many years our company is known its first class workmanship of turned parts and due to this it's a matter of course that our quality of our products is check by externals.

At this point in time we are certified after EN ISO 9001:2008. We have reached this high quality of standard due to our workers, which are always motivated and engaged in their work for us. Many of them have been working for this company for many years.

Always there for you

Personal contact with our customers is important to us. As a family-held company , we are particularly on a trusting relationship with you. Our goal is to get better and for you as a customer to provide the best. Challenge us, for we are pleased to work for you – every day !



001

Your contacts



Björn Kaldewei
Managing Director
International Sales

Telephone: +49 2393 9182-62
E-Mail: b.kaldewei@drehtechnik-sauerland.de



Tobias Loer
Customer Service – Sales

Telephone: +49 2393 9182-5
E-Mail: t.loer@drehtechnik-sauerland.de



Helen Winter
Sales - International

Telephone: +49 2393 9182-65
E-Mail: h.winter@drehtechnik-sauerland.de



Sarah Maier
Sales - National

Telephone: +49 2393 9182-63
E-Mail: s.maier@drehtechnik-sauerland.de



Corinna Kaldewei
Sales - National

Telephone: +49 2393 9182-64
E-Mail: c.kaldewei@drehtechnik-sauerland.de

Content

Wall spacer for plates with drilling

O = Suitable for outdoors

Page 10	Wall spacer – Classic wall spacer Flangeless and flanged wall spacers	O
Page 12	Wall spacer – 4 corner	
Page 13	Wall spacer – With screw-on head	O
Page 14	Wall spacer – Seaplex V4A	O
Page 15	Signboard holder – Sandwich	O
Page 16	Wall spacer 201 S / 201 SV – 50er Set	
Page 17	Wall spacer 41 – 50er Set	
Page 18	Signboard holder – ø 16 mm	O
Page 19	Signboard holder – ø 12 mm	O
Page 20	Signboard holder – ø 14 mm Colour code, spacer rings, decorative cap and threaded sleeve	O
Page 22	Signboard holder – ø 10 mm Colour code, spacer rings, decorative cap and threaded sleeve	O

Wall spacer for plates without drilling

Page 26	Kaskade – Professional fastening for groups of signs corner brackets, side brackets, centre brackets	O
Page 27	Clamp fastening for signs	

Ceiling suspension systems

Page 30	Ceiling suspension set ceiling fastener, plate bracket and plate connector	
Page 31	Cable Blocker Cable Blocker with sleeves, with locking mechanism, with eye and with hook	O

Various Products

Page 34	Plate brackets		Page 38	Accessories for sign boards, stainless steel robes, Washers, suction pads, dowels, screws, Allen key
Page 35	Display stands			
Page 36	Click plate	A	Page 40	Maintenance instruction
Page 37	Letter holder “Houdini”	A	Page 42	Terms and Conditions

Wall spacers for
plates with drilling



Wall spacers – Classic wall spacers

Classic wall spacers are available with slightly bevelled or a flat head form, flanged or flangeless. The high quality material makes the classic wall spacer in the V4V design especially resistant against atmospheric pollutions.



Flangeless wall spacers for indoor use

Article number	Diameter ø	Distance f. wall (WA)	Plate thickness (PS)	Plate drilling	Head shape	Material
0123.303	10	15	2-8	7	flat	SS, ni
0123.308	10	15	2-8	7	flat	SS, pol, zap
0124.303	10	15	6-11	7	flat	SS, ni
0124.308	10	15	6-11	7	flat	SS, pol, zap
0108.303	15	18,5	1-11	8,5	bevelled	SS, ni
0108.308	15	18,5	1-11	8,5	bevelled	SS, pol, zap
0110.303	15	18,5	1-11	8,5	flat	SS, ni
0110.308	15	18,5	1-11	8,5	flat	SS, pol, zap
0112.303	15	25	1-11	8,5	bevelled	SS,ni
0113.303	15	25	1-11	8,5	flat	SS, ni

Flangeless wall spacers for outdoors and indoors

Article number	Diameter ø	Distance f. wall (WA)	Plate thickness (PS)	Plate drilling	Head shape	Material
0123.101	10	15	2-8	7	flat	VA, untreated
0124.101	10	15	6-11	7	flat	VA, untreated
0108.101	15	18,5	1-11	8,5	bevelled	VA, untreated
0108.102	15	18,5	1-11	8,5	bevelled	VA, pol
0110.101	15	18,5	1-11	8,5	flat	VA, untreated
0110.102	15	18,5	1-11	8,5	flat	VA, pol
0112.101	15	25	1-11	8,5	bevelled	VA, untreated
0113.101	15	25	1-11	8,5	flat	VA, untreated

V4V classic wall spacers for particular atmospheric conditions

Article number	Diameter ø	Distance f. wall (WA)	Plate thickness (PS)	Plate drilling	Head shape	Material
0110.201	15	18,5	1-11	8,5	flat	V4A

The required dimensions are not present? Thanks to our own production we manufacture other sizes and custom made items. Just give us a ring!

Material

Indoors: Brass nickel plated.
Indoors and Outdoors: Untreated stainless steel with facet finish, polished stainless steel or anodised aluminium. Special designs upon request.

Use

Suitable to be used indoors or outdoors on small door plates or on large boards.



Flanged wall spacers for indoor use

Article number	Diameter ø	Distance f. wall (WA)	Plate thickness (PS)	Plate drilling	Head shape	Material
0102.303	15	18,5	3-10	10	bevelled	SS, ni
0102.308	15	18,5	3-10	10	bevelled	SS, pol, zap
0103.303	15	18,5	3-10	10	flat	SS, ni
0103.308	15	18,5	3-10	10	flach	SS, pol, zap
0106.303	15	40	3-10	10	bevelled	SS, ni
0107.303	15	40	3-10	10	flat	SS, ni

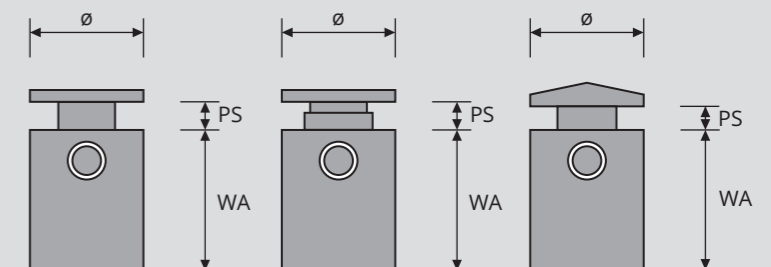
Flanged wall spacers for outdoors and indoors

Article number	Diameter ø	Distance f. wall (WA)	Plate thickness (PS)	Plate drilling	Head shape	Material
0102.510	15	18,5	3-10	10	bevelled	ALU, anod
0102.101	15	18,5	3-10	10	bevelled	VA, untreated
0102.102	15	18,5	3-10	10	bevelled	VA, pol
0103.510	15	18,5	3-10	10	flat	ALU, anod
0103.101	15	18,5	3-10	10	flat	VA, untreated
0103.102	15	18,5	3-10	10	flat	VA, pol
0106.101	15	40	3-10	10	bevelled	VA, untreated
0107.101	15	40	3-10	10	flat	VA, untreated

The required dimensions are not present? Thanks to our own production we manufacture other sizes and custom made items. Just give us a ring!

Assembly

1. Attach spacer sleeves
2. Put caps on
3. Fastening with set screw
Lock the set screw into place with a medium strength adhesive (e.g. Loctite®)



Example for Screws:
Wall spacers Ø 10 mm: max. head diameter of screw = 6 mm
Wall spacers Ø 15 mm: max. head diameter of screw = 8 mm

Wall spacers 4-corner

The elegant 4-corner wall spacer is a real eye catcher. With its square measurements 20 x 20 mm it holds boards ranging in thickness from 1mm up to 10 mm with a wall space of 20 mm.



Wall spacers 4-Corner for indoor use

Article number	Diameter ø	Distance f. wall (WA)	Plate thickness (PS)	Plate drilling	Head shape	Material
0188.316	20 x 20	20	1-10	8,5	flat	SS, VA finish

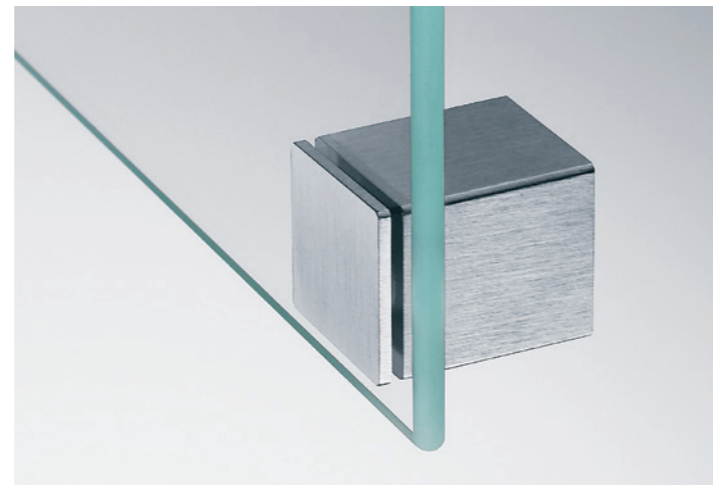
The required dimensions are not present? Thanks to our own production we manufacture other sizes and custom made items. Just give us a ring!

Use

For board thickness of 1 up to 10 mm und wall space 20 mm, indoor use.

Material

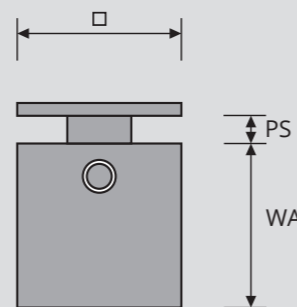
Brass, SS finish (stainless steel)



Assembly

1. Attach spacer sleeve
2. Put on caps
3. Fastening with set screw
Lock the set screw into place with a medium strength adhesive (e.g. Loctite®)

Example for screws: Wall spacer 20 x 20 mm:
max. head diameter of screw = 7,5 mm



Wall spacer with screw-on head

The attraction of this stainless steel wall spacer is the screw head. Even in places that are difficult reach such as niches or corners is the mounting of small plates and large boards without problems possible. The surface of the screw head has a particular beautiful facet finish.



Use

Suitable for small plates as well as large boards with variant thicknesses, available in three different wall spacers, for indoor and outdoor use.

Material

Untreated stainless steel, facet surface finish on screw head.



Wall spacers with screw-on head for outdoors and indoors

Article number	Diameter ø	Distance f. wall (WA)	Plate thickness (PS)	Plate drilling	Head shape	Material
0125.101	15	18,5	3-13	9	5	SS, untr.
0115.101	25	25	5-18	13	7	SS, untr.
0135.101	40	40	6-20	16	8	SS, untr.

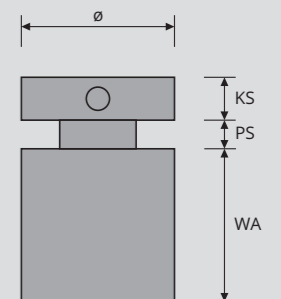
The required dimensions are not present? Thanks to our own production we manufacture other sizes and custom made items. Just give us a ring!

Assembly

1. Attach the spacer sleeves to the wall
2. Put on the plate and screw on the head

Example for screws

Wall spacer Ø 15 mm: max. diameter of screw head = 8 mm
Wall spacer Ø 25 mm: max. diameter of screw head = 11 mm
Wall spacer Ø 40 mm: max. diameter of screw head = 15 mm



Wall spacers – Seaplex V4A

As the name suggests, this wall spacers is made out of seawater and chlorinated water-resistant plastic material (reinforced glass-fibre and solid-coloured polyamide) with a V4V stainless steel head. It is suitable to hold signs, plates and panels in place which are exposed to water, wind and all kinds of weather.

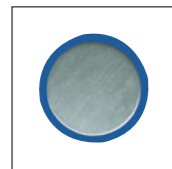
Special features are the left-hand thread for fastening and the its UV- and heat resistance which allows for long lasting.



Wall spacers Seaplex V4A for special atmospheric conditions

Article number	Diameter \varnothing	Distance f. wall (WA)	Plate thickness (PS)	Plate drilling	Colour	Material
0150.716	13	15	2-10	10,5	Blue	Seaplex
0150.717	13	15	2-10	10,5	Black	Seaplex
0150.718	13	15	2-10	10,5	Grey	Seaplex

The required dimensions are not present? Thanks to our own production we manufacture other sizes and custom made items. Just give us a ring!



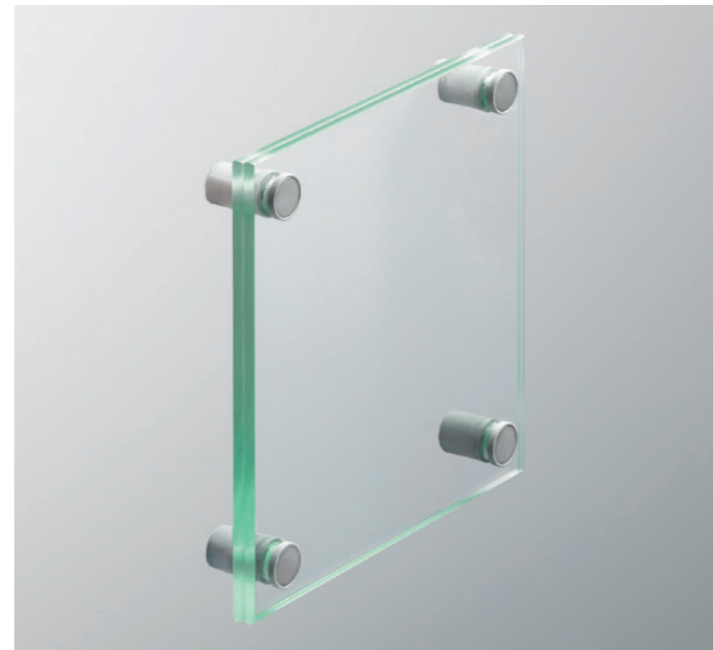
Colour: blue
RAL 5002



Colour: black
RAL 9011



Colour: black
RAL 7012



Use

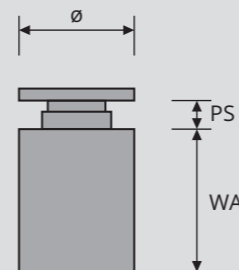
For signs, plates and panels which are being used in swimming pools and outdoor areas which are exposed to water and all kinds of weather. Suitable for indoors and outdoors.

Material

Corpus out of seawater- and chlorinated water-resistant plastic material (Reinforced glass-fibre and solid-coloured polyamide), Head plate out of V4V stainless steel

Assembly

1. Attach the spacer sleeves to the wall
2. Put on the plate and screw on the head



Sandwich plate brackets

The name says it all. Our sandwich plate brackets are best when the content of door plates or guide systems needs to be replaced.

For this purpose we supply plates in thickness of 2 x 4mm or 2 x 5mm. These plates are attached with self-locking bolts with plastic washers for adequate protection of the glass.

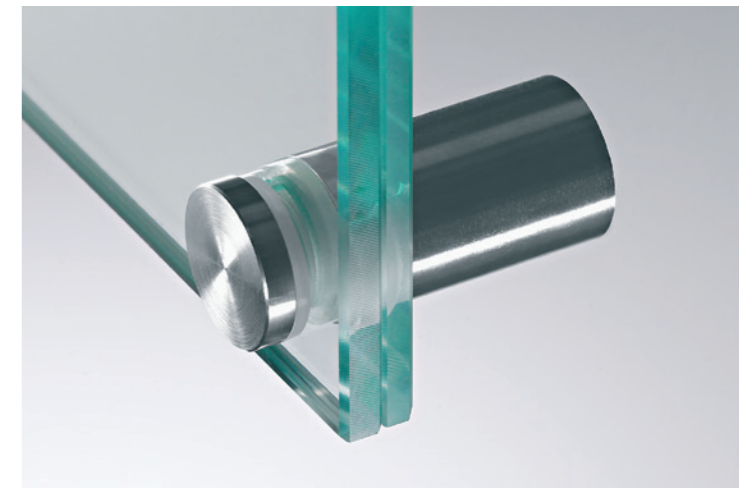


Use

For door plates, guidance systems and decorative plates with frequently changing content. For indoors and outdoors.

Material

Untreated stainless steel with facet surface finish on the head. Special designs upon request.



Sandwich plate brackets for outdoors and indoors

Article number	Diameter \varnothing	Distance f. wall (WA)	Plate thickness (PS)	Plate drilling	Fastening device	Material
0116.101	13	15	2 x 4	10	Hanger bolt	SS, untr.
0121.101	15	18,5	2 x 4	10	Spax screw	SS, untr.
0117.101	18	25	2 x 5	12	Hanger bolt	SS, untr.
0122.101	18	25	2 x 5	12	Spax screw	SS, untr.

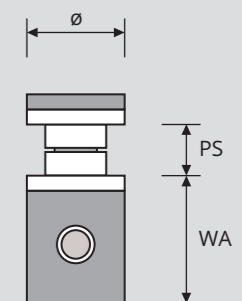
The required dimensions are not present? Thanks to our own production we manufacture other sizes and custom made items. Just give us a ring!

Assembly

1. Attach the spacer sleeves
2. Put on caps
3. Fastening them with the set screw on the side
4. Lock the set screw into place with a medium strength adhesive (e.g. Loctite®)

Example for screws

- Wall spacer \varnothing 13 mm: M4 hanger bolt
- Wall spacer \varnothing 15 mm: max. diameter of screw head = 8 mm
- Wall spacer \varnothing 18 mm: max. diameter of screw head = 8 mm or M4 hanger bolt



Wall spacers 201 S / 201 SV – Set of 50

These all-round wall spacers with flange are available in a set of 50, as they are suitable for boards from 1mm thickness and can be utilised for all kinds of signs – for example small plates as well as signs up the size of A3.

The wall spacer 201 S is manufactured out of brass and the 201 SV is made out of stainless steel.



Wall spacer 201 S / 201 SV for outdoors and indoors

Article number	Diameter ø	Distance f. wall (WA)	Plate thickness (PS)	Plate drilling	Head size	Material
201 S	15	15	3-8	10	bevelled	BR, ni
201 SV	15	15	3-8	10	bevelled	SS, untr.

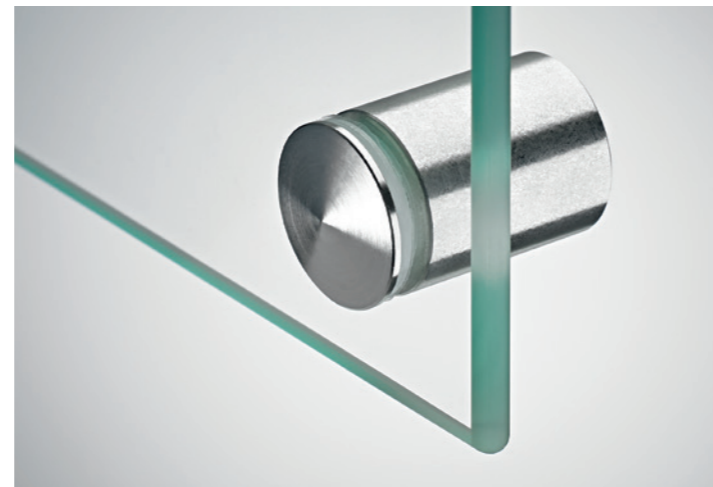
The required dimensions are not present? Thanks to our own production we manufacture other sizes and custom made items. Just give us a ring!

Use

For small plates and large signs (up to A3) from 1mm thickness, Use of 201 S for indoors, Use of 201SV for indoors and outdoors

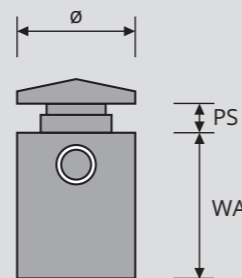
Material

201 S: Brass nickel plated
201 SV: Stainless steel untreated



Assembly

1. Attach the spacer sleeves
2. Put on caps
3. Fastening them with the set screw on the side
4. Lock the set screw into place with a medium strength adhesive (e.g. Loctite®)



Wall spacers 41 – Set of 50

The 41 wall spacer is also available in a convenient pack of 50, with two different kinds of diameters 10 or 14mm both laid out for a distance of 8mm from the wall.

With this version of the 41mm wall bracket, fine materials from 1 mm thickness are perfectly staged. The 41 series is indoors a true multi talent as it is suitable for small and large information signs up to a size of A3.



Wall spacer 41 for indoors

Article number	Diameter ø	Distance f. wall (WA)	Plate thickness (PS)	Plate drilling	Head size	Material
0350.306	10	8	1-6	7	5	BR, pol, chr.
0351.306	14	8	2-6	9	6	BR, pol, chr.

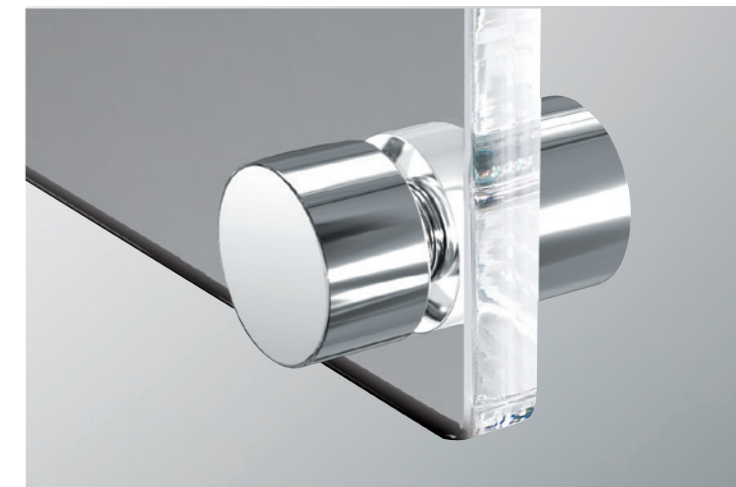
The required dimensions are not present? Thanks to our own production we manufacture other sizes and custom made items. Just give us a ring!

Use

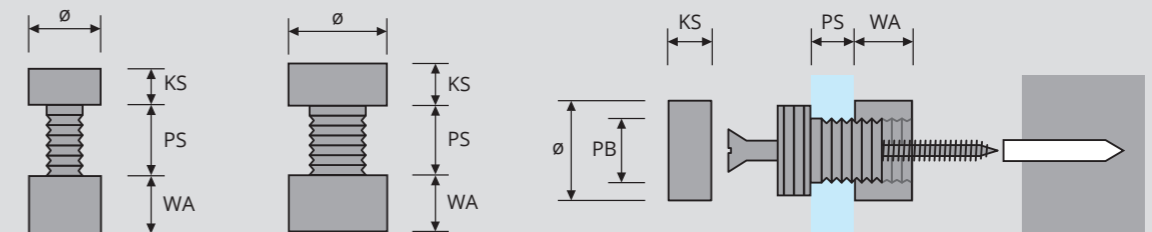
For small and large signs and plates (up to A3) from 1mm thickness, for indoors.

Assembly

- Assembly
1. Attach signboard bracket to the plate
 2. Place sign in position and mark the drill holes
 3. Fasten brackets to the signboard with flat head screws
 4. Screw on decorative cap to hide the screw head.



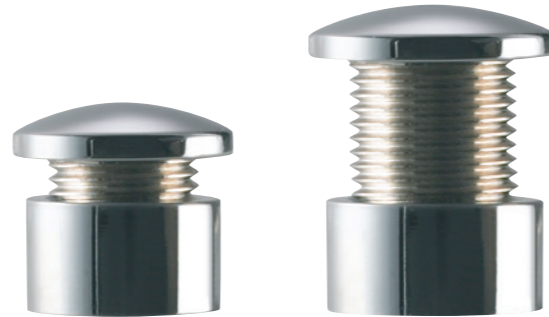
Material Material Brass nickel-plated



Signboard fasteners – ø 16 mm

The three-part signboard fasteners are suited for larger signs as they are preassembled on the board. This greatly simplifies the measuring.

The signboard fasteners are supplied in two different sizes and with various surface finishes for indoors and outdoors. They are the perfect solution to hang larger plates straight. These signboard fasteners are suitable for plate thicknesses ranging from 3 to 14mm.



Signboard fasteners ø 16 mm

Article number	Diameter ø	Distance f. wall (WA)	Plate thickness (PS)	Plate drilling	Head size	Material
For indoors						
0118.306	16	8	9-14	12	4	BR, pol, chr.
0119.306	16	8	3-8	12	4	BR, pol, chr.
For indoors and outdoors						
0118.101	16	8	9-14	12	4	SS, untr.
0118.102	16	8	9-14	12	4	SS, pol.
0118.510	16	8	9-14	12	4	ALU, anod.
0119.101	16	8	3-8	12	4	SS, untr.
0119.102	16	8	3-8	12	4	SS, pol.
0119.510	16	8	3-8	12	4	ALU, anod.

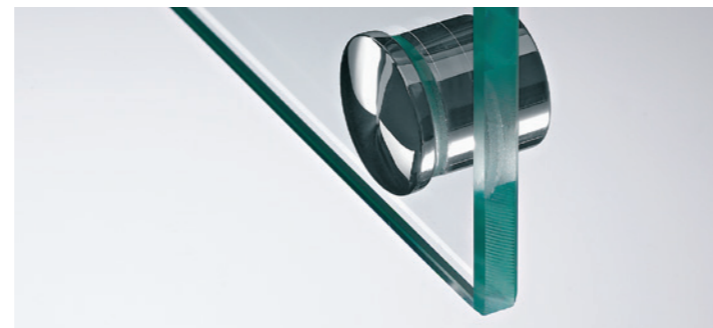
The required dimensions are not present? Thanks to our own production we manufacture other sizes and custom made items. Just give us a ring!

Use

For larger signs and plate thicknesses ranging from 3 to 14 mm, Suitable for indoors and outdoors.

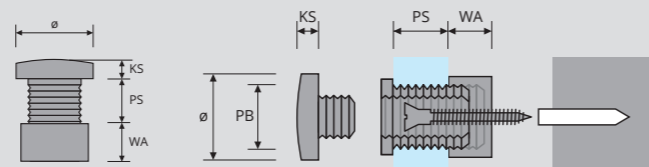
Material

Indoors: Brass polished and chrome-plated. Indoors and outdoors: Stainless steel untreated with facet surface finish, polished stainless steel, anodised aluminium.



Assembly

1. Attach signboard fastener to the plate
2. Bring sign into position and mark drill holes.
3. Attach the spacer sleeves with countersunk screws. Spacer sleeve ø 16 mm: screw head diameter = 8 mm
4. Put on decorative caps and lock them into position with a medium strength adhesive (e.g. Loctite®)



Signboard fasteners – ø 12 mm

Signboards fastening with a diameter of 12mm are suitable for smaller signs which are directly mounted to the wall or are mounted with spacer sleeves.

The fastening screws are completely covered with the screw-on decorative caps. Plate thicknesses are variable, and we offer spacer rings for the wall distance in four different lengths from 8 to 20mm.



Use

For small signs and various plate thicknesses, For indoors.

Assembly

1. Insert fastening screw into the plate
2. Pull distance ring over the screw
3. Fix screw to wall
4. Put decorative cap onto screw.



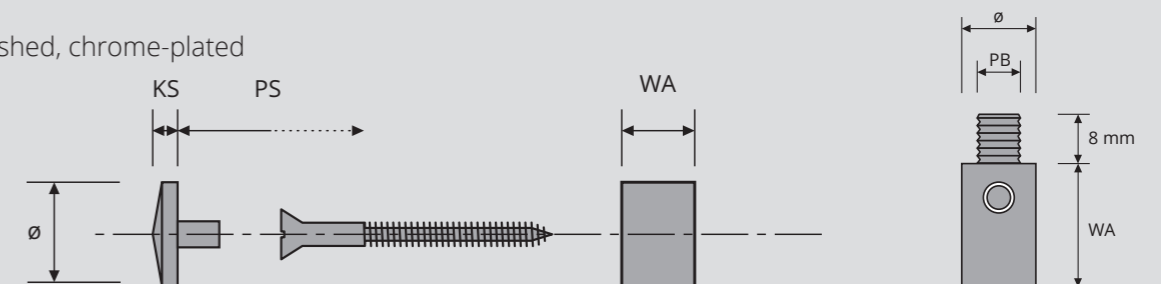
Signboard fastening ø 12 mm for indoors

Article number	Diameter ø	Distance f. wall (WA)	Plate drilling	Head size	Head shape	Material
0300.306	12	8	variable	5, countersunk	3	BR, pol, chr
0301.306	12	12	variable	5, countersunk	3	BR, pol, chr
0302.306	12	16	variable	5, countersunk	3	BR, pol, chr
0303.306	12	20	variable	5, countersunk	3	BR, pol, chr

The required dimensions are not present? Thanks to our own production we manufacture other sizes and custom made items. Just give us a ring!

Material

Brass polished, chrome-plated



Signboard fastening – ø 14 mm

A further option for fastening plates offers this mounting kit which includes dowels and screws.

Due to their 14mm diameter they are perfect for mounting smaller signs with variable thicknesses. They can be mounted directly to the wall or with spacer sleeves at a distance of 8, 12, 16 or 20mm



Signboard fastening ø 14 mm

Article number	Diameter ø	Distance f. wall (WA)	Plate drilling	Head size	Head shape	Material
0304.code*	14	8	5	6,5	–	–
0305.code*	14	12	5	6,5	–	–
0306.code*	14	16	5	6,5	–	–
0307.code*	14	20	5	6,5	–	–

Example: Article number 0304.306 (Colour code –Table bottom right) = Spacer sleeve 8 mm, Brass, polished, chrome-plated.

Spacer sleeve ø 12 mm

Article number	Diameter ø	Distance f. wall (WA)	Plate drilling	Head size	Head shape	Material
For indoors						
8005.303	12	8	5	–	–	BR, nic
8006.303	12	12	5	–	–	BR, nic
8007.303	12	16	5	–	–	BR, nic
8008.303	12	20	5	–	–	BR, nic
8005.308	12	8	5	–	–	BR, pol, zap
8006.308	12	12	5	–	–	BR, pol, zap
8007.308	12	16	5	–	–	BR, pol, zap
8008.308	12	20	5	–	–	BR, pol, zap
For outdoors and indoors						
8005.517	12	8	5	–	–	ALU, anod, Black
8006.517	12	12	5	–	–	ALU, anod, Black
8007.517	12	16	5	–	–	ALU, anod, Black
8008.517	12	20	5	–	–	ALU, anod, Black
8005.521	12	8	5	–	–	ALU, anod, Blue
8006.521	12	12	5	–	–	ALU, anod, Blue
8007.521	12	16	5	–	–	ALU, anod, Blue
8008.521	12	20	5	–	–	ALU, anod, Blue

Threaded sleeve

Article number	Diameter ø	Distance f. wall (WA)	Plate drilling	Head size	Head shape	Material
For indoors						
8019.303	M 12 x 1	–	5	–	–	BR, nic

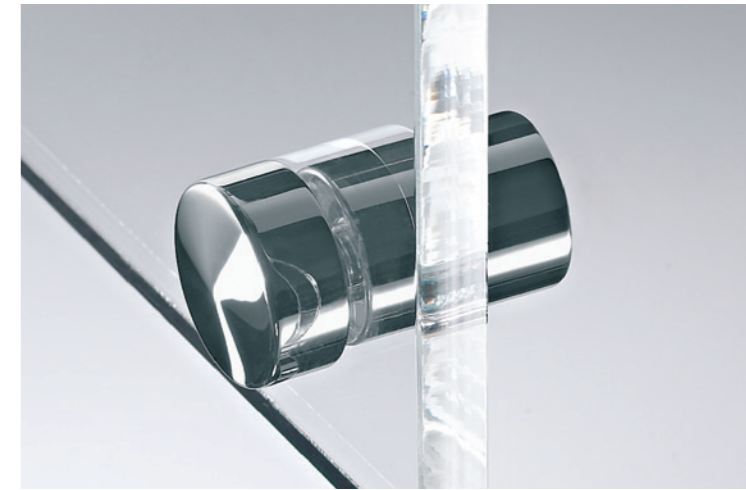
Use

For small signs and a variation of thicknesses, For indoors and outdoors

Material

For indoors: Brass polished, chrome-plated or zapon varnished.

For indoors and outdoors: Aluminium silver, blue or black anodized, stainless steel untreated.

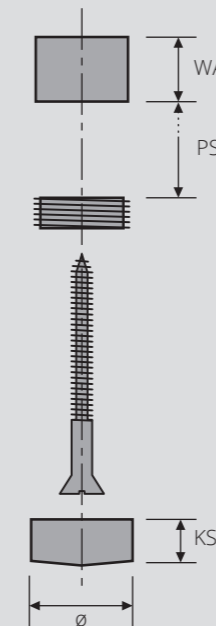


Decorative cap ø 14 mm (Threaded sleeve article number 8019.303 is required for installation)

Article number	Diameter ø	Distance f. wall (WA)	Plate drilling	Head size	Head shape	Material
For indoors						
8023.306	14	–	5	6,5	bevelled	BR, pol, chr
8023.308	14	–	5	6,5	bevelled	BR, pol, zap
For outdoors and indoors						
8022.101	14	–	5	6,5	flat	SS, untr.
8024.510	14	–	5	6,5	bevelled	ALU, anod, silver
8023.517	14	–	5	6,5	bevelled	ALU, anod, black
8024.521	14	–	5	6,5	bevelled	ALU, anod, blue

Assembly

1. Attach spacer sleeve and plate with a standard screw
2. Screw on decorative cap



Colour code *with supplementary article number

Article no.	Description	Image
For indoors		
...306	Brass polished chrome-plated	
...308	Brass polished zapon-varnished	
For indoors and outdoors		
...101	Stainless steel untreated	
...510	Aluminium anodized silver	
...517	Aluminium anodized black	
...521	Aluminium anodized blue	

The required dimensions are not present? Thanks to our own production we manufacture other sizes and custom made items. Just give us a ring!

Signboard fasteners – ø 10 mm

With the 10mm signboard fasteners we will take colours to the wall, especially if you want to fasten small signs.

For the surface colours you are able to choose between gold, silver, black or blue. For the wall spacer the dimensions are 3, 6, 10 and 14 mm possible.



Signboard fasteners ø 10 mm

Article number	Diameter ø	Distance f. wall (WD)	Plate drilling	Head size	Head shape	Material
0310.code*	10	3	4	5,5	–	–
0311.code*	10	6	4	5,5	–	–
0312.code*	10	10	4	5,5	–	–
0313.code*	10	14	4	5,5	–	–

Example: Article number 0310.306 (Colour code table bottom right) = Distance from wall 3 mm, Brass polished chrome-plated.

Spacer sleeve ø 10 mm

Article number	Diameter ø	Distance f. wall (WD)	Plate drilling	Head size	Head shape	Material
For indoors						
8031.303	10	3	4	–	–	BR, ni
8032.303	10	6	4	–	–	BR, ni
8033.303	10	10	4	–	–	BR, ni
8034.303	10	14	4	–	–	BR, ni
8031.308	10	3	4	–	–	BR, pol, zap
8032.308	10	6	4	–	–	BR, pol, zap
8033.308	10	10	4	–	–	BR, pol, zap
8034.308	10	14	4	–	–	BR, pol, zap
For indoors and outdoors						
8031.517	10	3	4	–	–	ALU, anod, black
8032.517	10	6	4	–	–	ALU, anod, black
8033.517	10	10	4	–	–	ALU, anod, black
8034.517	10	14	4	–	–	ALU, anod, black
8031.521	10	3	4	–	–	ALU, anod, blue
8032.521	10	6	4	–	–	ALU, anod, blue
8033.521	10	10	4	–	–	ALU, anod, blue
8034.521	10	14	4	–	–	ALU, anod, blue

Threaded sleeve

Article number	Diameter ø	Distance f. wall (WD)	Plate drilling	Head size	Head shape	Material
For indoors						
8027.303	M 8 x 1	–	4	–	–	BR, ni

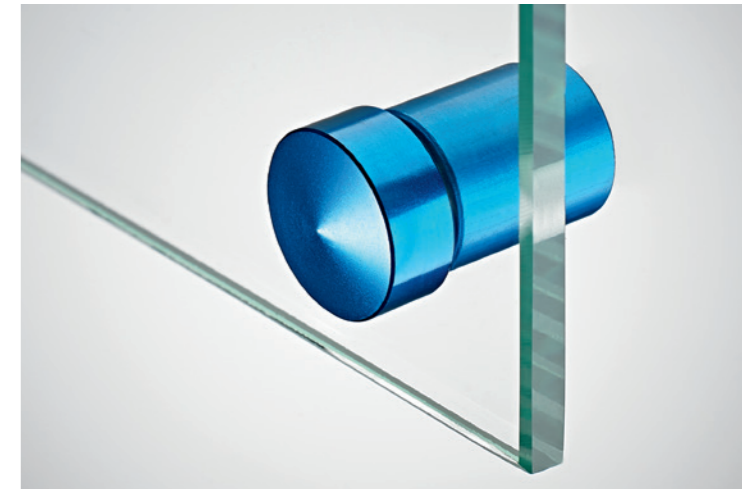
Use

For small signs and various thicknesses. Suitable for indoor and outdoor use.

Material

For indoors: Brass polished and chrome-plated or anodized

For indoors and outdoors: Aluminium silver, blue or black anodized, Stainless steel untreated.

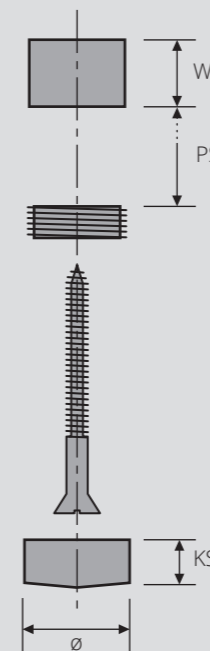


Decorative ø 10 mm (Threaded sleeve article number 8027.303 is required for installation)

Article number	Diameter ø	Distance f. wall (WD)	Plate drilling	Head size	Head shape	Material
For indoors						
8026.306	10	–	4	5,5	bevelled	BR, pol, chr
8026.308	10	–	4	5,5	bevelled	BR, pol, zap
For outdoors and indoors						
8025.101	10	–	4	5,5	flat	VA, untr
8025.510	10	–	4	5,5	bevelled	ALU, anod, silver
8026.517	10	–	4	5,5	bevelled	ALU, anod, black
8025.521	10	–	4	5,5	bevelled	ALU, anod, blue

Assembly

1. Attach spacer sleeve and plate with a standard screw
2. Screw on decorative cap



Colour code *with supplementary article number

Article no.	Description	Image
For indoors		
...306	Brass polished chrome-plated	
...308	Brass polished zapon-varnished	
For indoors and outdoors		
...101	Stainless steel untreated	
...510	Aluminium anodized silver	
...517	Aluminium anodized black	
...521	Aluminium anodized blue	

The required dimensions are not present? Thanks to our own production we manufacture other sizes and custom made items. Just give us a ring!

Wall spacers for
plates without drilling



Kaskade – fastening system for groups of signs

Kaskade is the perfect solution to professionally mount plates which are arranged in a row.

With different corner- side or centre connection bits, endless rows of single elements can be connected together, it doesn't matter if they are next or above each other.

The head is secured with an M2 set screw.



Kaskade corner bracket for outdoors and indoors

Article number	Diameter \varnothing	Distance f. wall (WD)	Plate drilling	Head size	Head shape	Material
1003.506	20	20	4-5	6,5	flat	ALU, chr
1003.530	20	20	4-5	6,5	flat	ALU, C31

Kaskade side bracket for outdoors and indoors

Article number	Diameter \varnothing	Distance f. wall (WD)	Plate drilling	Head size	Head shape	Material
1004.506	20	20	4-5	6,5	flat	ALU, chr
1004.530	20	20	4-5	6,5	flat	ALU, C31

Kaskade centre bracket for outdoors and indoors

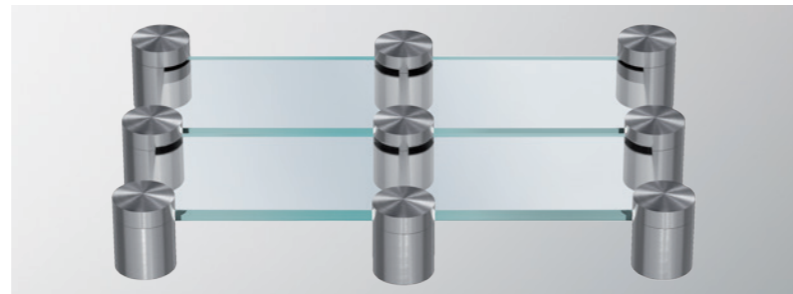
Article number	Diameter \varnothing	Distance f. wall (WD)	Plate drilling	Head size	Head shape	Material
1005.506	20	20	4-5	6,5	flat	ALU, chr
1005.530	20	20	4-5	6,5	flat	ALU, C31

Use

For the arrangement of groups of signs with thicknesses variant from 4 - 5 mm, Suitable for indoor and outdoor use .

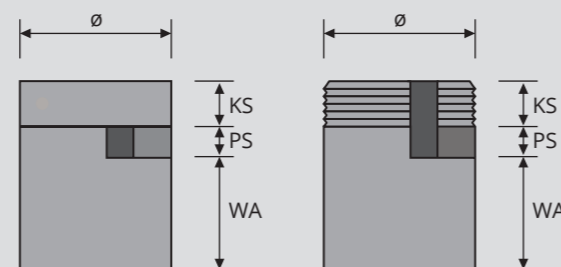
Material

Aluminium chrome-plated or C31



Assembly

1. Attach spacer sleeves to the wall using drywall screws
2. Choose suitable fastener (corner, side of centre piece)
3. Screw on top
4. Lock into place with M2 screw (Lock the set screw into place with a medium strength adhesive (e.g. Loctite®))



Clamp fastening for signs

Signs and plates made out of a variety of materials are securely mounted with our clamp fasteners. Even materials such as mirror glass, stone, granite or even ceramic plates are mounted with these clamp fasteners – no drilling necessary.

The plate bracket is closed at the top has a side notch which holds plates between 2 and 5 mm thick.

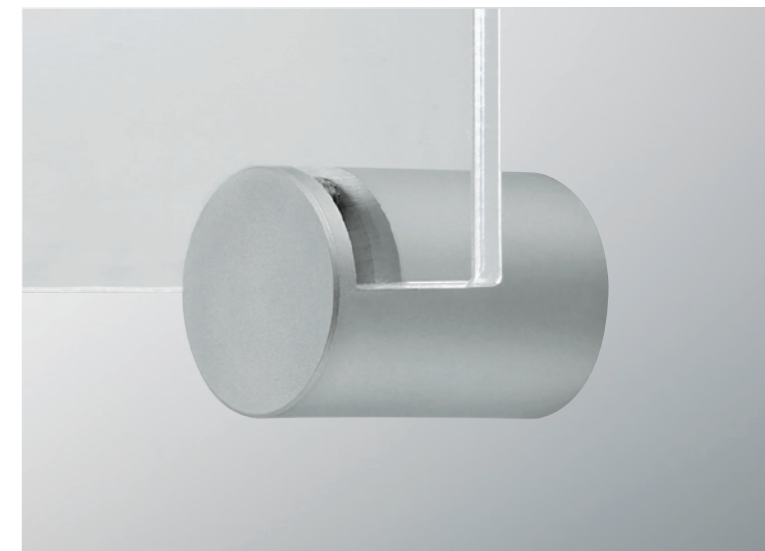


Assembly

Suitable to fasten signs, plates, brochure holders and building guidance systems, especially suited for mirror glass, ceramics, stone tiles and other similar materials for indoor areas.

Material

Brass polished chrome-plated and chrome plated with a matt finish.



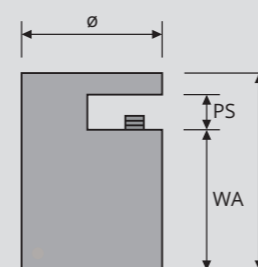
Clamp fastenings for indoors

Article number	Diameter \varnothing	Length (L)	Distance f. wall (WD)	Plate thickness	Head shape	Material
1002.306	20	28	20	2-5	flat	BR, pol, chr
1002.307	20	28	20	2-5	flat	SS, mattchr

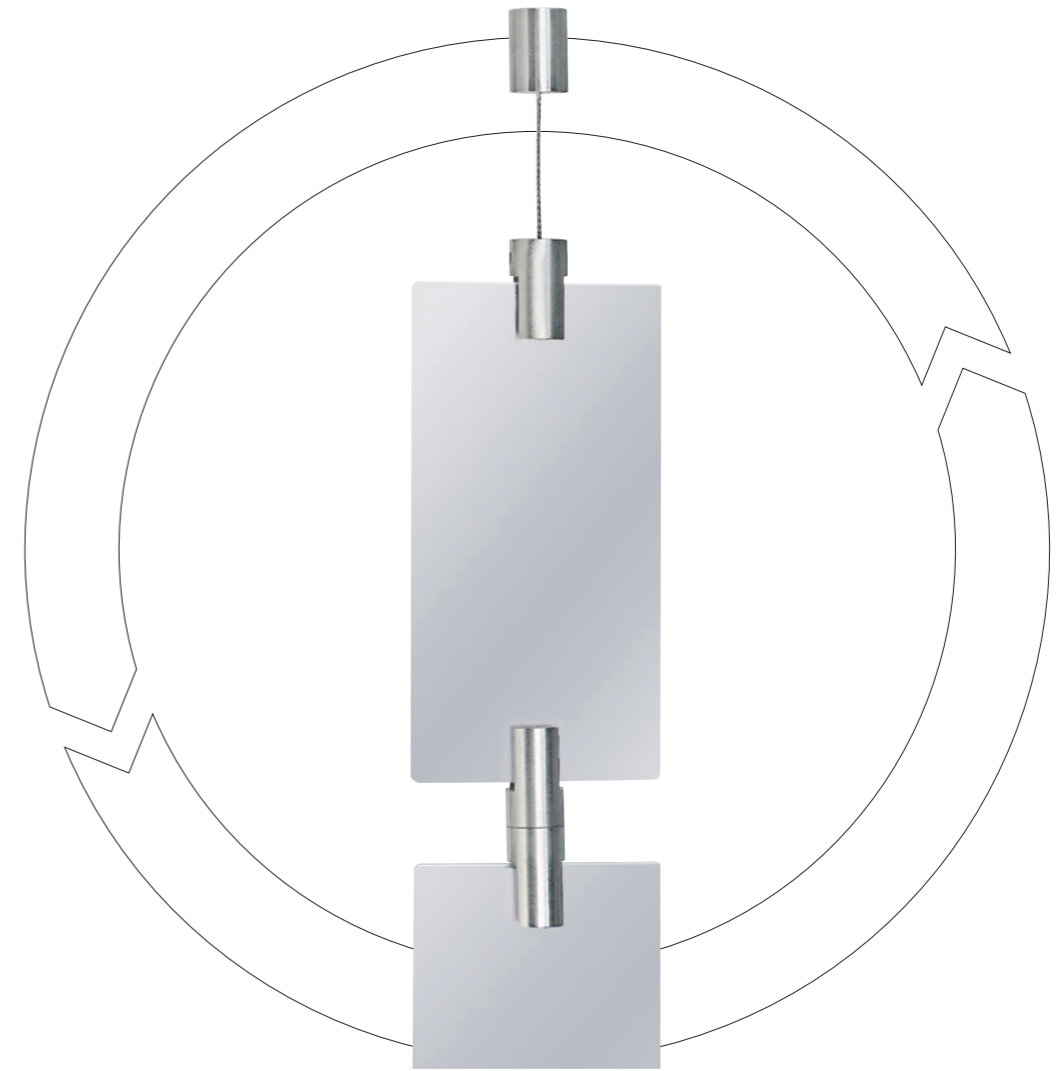
The required dimensions are not present? Thanks to our own production we manufacture other sizes and custom made items. Just give us a ring!

Assembly

1. Fastening sleeve is screwed to the wall
2. Fasten the plate bracket on the sign using a set screw.
3. The sign is mounted onto the sleeves.
4. Secured with set screws (Lock the set screw into place with a medium strength adhesive (e.g. Loctite®))



Ceiling suspension system



Ceiling suspension set

This ceiling suspension set is the perfect solution for all things that need to be presented with a certain chic especially in sales rooms, on exhibition stands and even in museums. The double sided holders are designed to fasten plates with thicknesses from 1 to 6mm and from 1 to 10mm it is even possible to combine a plurality of panels with each other. The two meter long steel rope can be shorten to the length that is required. The set consist of ceiling fastener, plate bracket, steel rope, screws and dowels. All components can also be obtained separately.



Ceiling suspension set plate bracket and ceiling fastener for indoors

Article no.	Diameter ø	Length 1 (L1)	Length 2 (L2)	Length 3 (L3)	Length 4 (L4)	Plate thickness (PT)	Plate drilling	Material
0400.306	18	25	30	19	10	1-10	6	BR, pol, chr
0400.316	18	25	30	19	10	1-10	6	BR, SS, finish
0402.306	14	20	25	15	10	1-6	4	BR, pol, chr
0402.316	14	20	25	15	10	1-6	4	BR, SS, finish

Plate bracket for indoors

Article no.	Diameter ø	Length 1 (L1)	Length 2 (L2)	Length 3 (L3)	Length 4 (L4)	Plate thickness (PT)	Plate drilling	Material
0401.306	18	-	30	19	10	1-10	6	BR, pol, chr
0401.316	18	-	30	19	10	1-10	6	BR, SS, finish
0403.306	14	-	25	15	10	1-6	4	BR, pol, chr
0403.316	14	-	25	15	10	1-6	4	BR, SS, finish

Plate connector for indoors

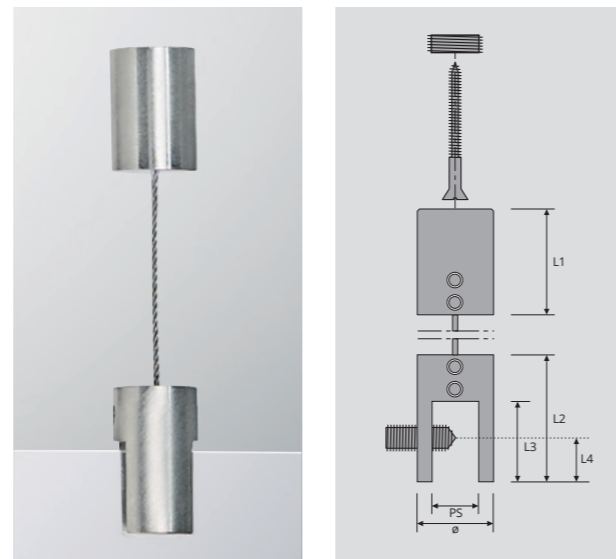
Article no.	Diameter ø	Length 1 (L1)	Length 2 (L2)	Length 3 (L3)	Length 4 (L4)	Plate thickness (PT)	Plate drilling	Material
0408.306	18	-	2 x 24,5	19	10	1-10	6	BR, pol, chr
0408.316	18	-	2 x 24,5	19	10	1-10	6	BR, VA, finish
0409.306	14	-	2 x 20	15	10	1-6	4	BR, pol, chr
0409.316	14	-	2 x 20	15	10	1-6	4	BR, VA, finish

Plate connector for indoors

Article no.	Diameter ø	Length 1 (L1)	Material
0411.306	18	25	BR, pol, chr
0411.316	18	25	BR, VA, finish
0433.306	14	20	BR, pol, chr
0433.316	14	20	BR, VA, finish

Assembly

1. Attach the threaded ring to the ceiling with the counter-sunk screw, screw the ceiling fastener onto the ring
2. Secure the steel rope with two set screws
3. Shorten the rope to the desired length and fasten it to the plate bracket with two set screws on the side
4. Attach signboard by means of a screw on the side. If necessary fit glass protection (available upon request)



Cable Blocker

The popular term is Cable Blocker. The cable-blockers have a self-locking mechanism, the 1,5mm diameter steel cables are fastened to the ceiling with this. Signs, posters and placards as well as other suspended objects can be quickly and easily fastened with the cable-blockers equipped with hooks and eyes.



The cable comes out on the side and can be there adjusted to the desired length.

Assembly

1. Attach the sleeve with spax screw and dowels.
2. Screw in cable-blocker
3. Press in fastening pen, insert cable and choose length, Release pin, locking cable in place.

Cable Blocker with sleeve

Article No.	Diameter ø	Length (L)	Cable thickness	Cable guide (CG)	Material
For indoors					
0407.303	16	39	max. 2	4	BR, ni
0407.306	16	39	max. 2	4	BR, pol, chr
0407.316	16	39	max. 2	4	BR, SS finish
For indoors and outdoors					
0407.101	16	39	max. 2	4	SS, untr.
0407.102	16	39	max. 2	4	SS, pol

Cable Blocker with sleeve and locking mechanism

Article No.	Diameter ø	Length (L)	Cable thickness	Cable guide (CG)	Material
For indoors					
0410.303	16	39	max. 2	6	BR, ni
0410.306	16	39	max. 2	6	BR, pol, chr
0410.316	16	39	max. 2	6	BR, SS finish
For indoors and outdoors					
0410.101	16	39	max. 2	6	SS, untr.
0410.102	16	39	max. 2	6	SS, pol

Cable Blocker eyes

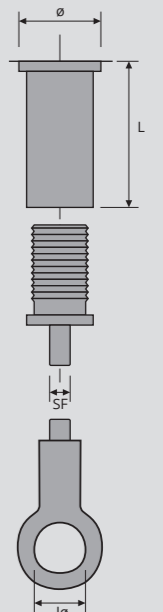
Artikel no.	Diameter ø	Inner diameter ø	Length	Cable thickness	Material
For indoors					
0408.303.1	17	10	30	1,5	ni

Cable Blocker hooks

Artikel no.	Diameter ø	Inner diameter ø	Length	Cable thickness	Material
For indoors					
409.303.1	17	10	30	1,5	ni



Material siehe Tabelle



Miscellaneous Products and Accessories



Plate brackets

With these universal brackets you can not only attach signs to the ceiling or to a wall, but also assemble room dividers, signposts, orientation boards, shelves, wall boards or small racks.

These plate brackets are popular design elements and are indispensable when planning an exhibition or interior work.



Plate brackets for clamp fastening

Article no.	Diameter \varnothing	Length (L)	Plate thickness (PT)	Distance f. Wall (WD)	Material
For indoors					
1000.306	20	25	1-8	5	BR, pol, chr
1000.307	20	25	1-8	5	BR, mattchr

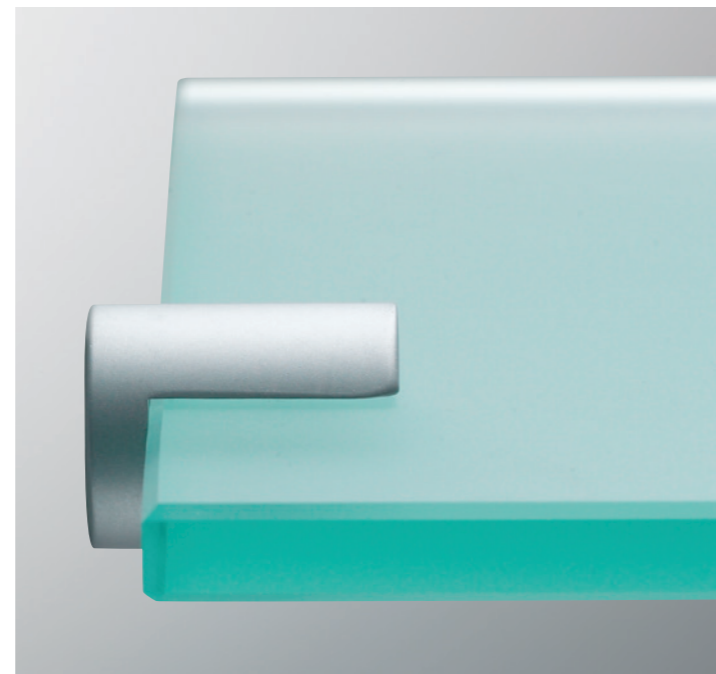
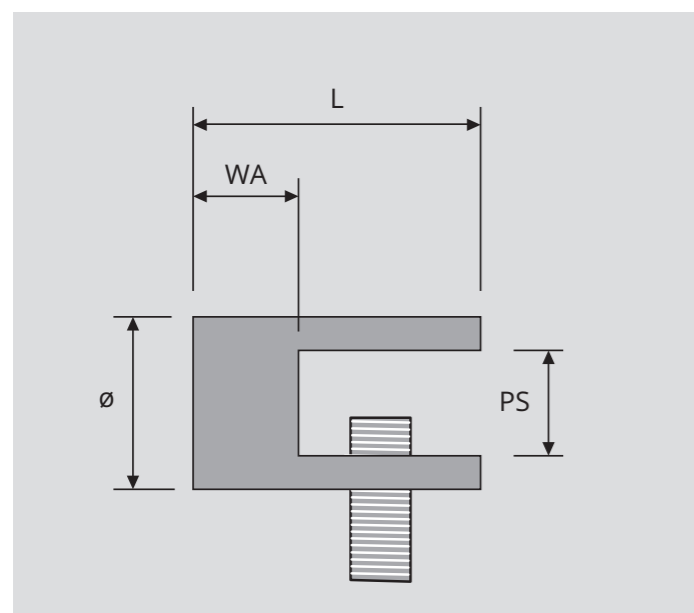
The required dimensions are not present? Thanks to our own production we manufacture other sizes and custom made items. Just give us a ring!

Use

To fasten signs to the ceiling or wall and to connect furniture, shelves, boards; For indoors.

Material

Brass polished and chrome-plated;
Brass matt finished (stainless steel finish).



Assembly

1. Fasten plate bracket with standard countersunk screws (max. head diameter 8mm)
2. Use plastic set screw to secure signs

Display stand

All presentation agents who act better when they are set up and not hung up are put in the right light if you are using our functional and elegant display stand: Displays, name plates, signposts at trade fairs or bar tops.

The stands hold plates made out of various materials and sizes up to 40 x 30cm with a thickness from 2 to 14mm.



Use

To hold up displays, signposts, name plates; plate thicknesses 2 to 14mm, For indoors.

Material

Brass polished chrome-plated.



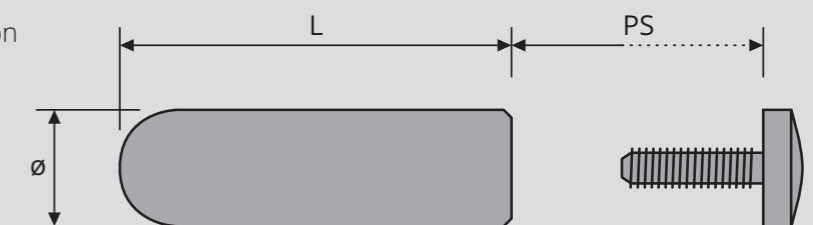
Display stand for indoors

Article no.	Diameter \varnothing	Length (L)	Plate thickness (PT)	Plate drilling	Material
0700.306	12	40	2-8	7	BR, pol, chr
0701.306	12	40	2-14	7	BR, pol, chr
0702.306	8	40	1-6	5	BR, pol, chr
0703.306	8	40	2-12	5	BR, pol, chr

The required dimensions are not present? Thanks to our own production we manufacture other sizes and custom made items. Just give us a ring!

Assembly

The plates are screwed into position between the sleeve and the head (7mm drillings).



Click Sign

These click signs are made out of unbreakable and crystal clear acrylic glass and have the simple "click" to change the inlets of different sizes, from 150 x 150 mm for door plates up to 400 x 600 mm for large format signposts (Emergency exit plans of all kinds).

Please note upon your order that the delivery time for click-signs, depending on model varies between 1 to 3 weeks.



1. Remove cover plate



2. Change text sheet



3. Attach cover plate, click, done!

Door sign for indoors and outdoors

Article no.	Description	Size	Distance from wall (WD)
4280	Door plate	150 x 150	10
4285	Plate with stainl. steel slide „Free / Engaged“	150 x 150	10

Display for indoors and outdoors

Article no.	Description	Size	Distance from wall (WD)
4281	Display DIN A4	297 x 210	10
4282	Display DIN A3	420 x 297	10
4283	Display DIN A2	420 x 594	10

Emergency exit plans for indoors and outdoors

Article no.	Description	Size	Distance from wall (WD)
4284	Emergency exit plan	400 x 600	10

Suction cups for changing plates

Article no.	Description
4286	Suction cup

Sample plate with suction cup and inlay for outdoors and indoors

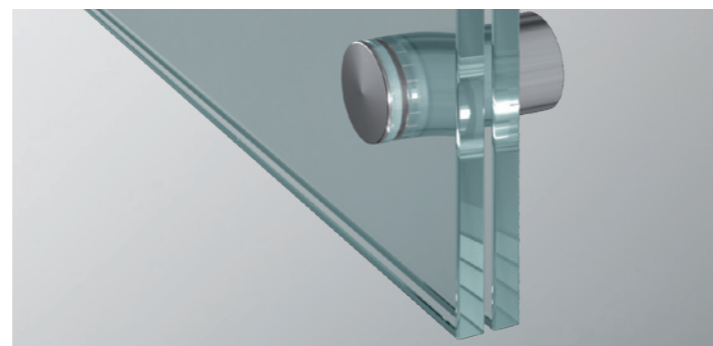
Article no.	Description
4287	Sample plate with suction cup and inlay

Use

For information signs with changeable inlets in various sizes up to A2, for indoors and outdoors

Material

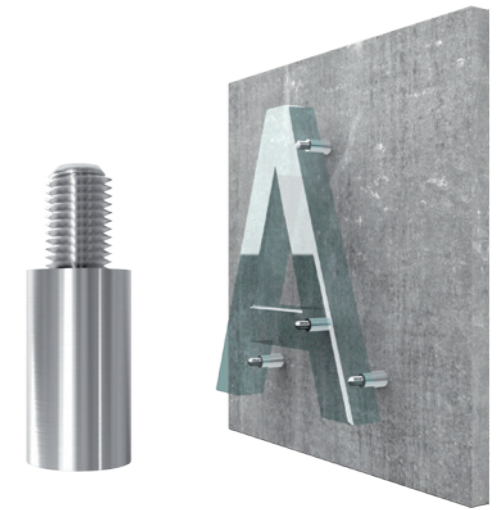
Unbreakable and crystal clear acrylic glass, fittings in a stainless steel finish, connection system without screws.



Letter fastener "Houdini"

Our letter fasteners highlights every name, invisible, just like the eponym suggest, "Houdini" keeps what it promises and stays subtly in the background of plates, logos, letters made out of solid materials with a diameter of 12mm.

The distances to the wall are freely selectable between 15 and 50mm.

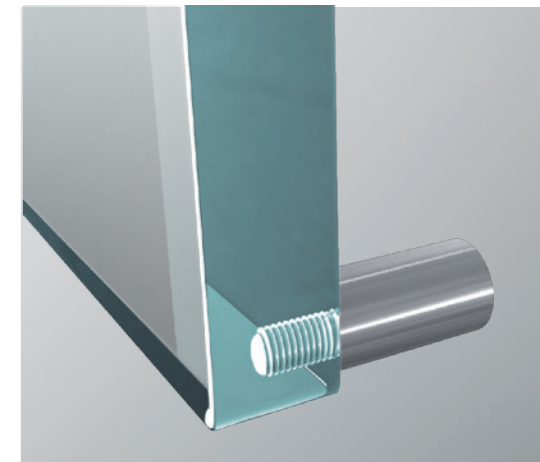


Use

To fasten plates, logos and letters from a thickness of 15mm to the wall, for indoors and outdoors

Assembly

1. Threaded pin is screwed into the plate material
2. Sleeve with spacer tube is firmly attached to the wall with a drywall screw.
3. The locking pin of the threaded pin is inserted and locked into place with a lateral safety screw

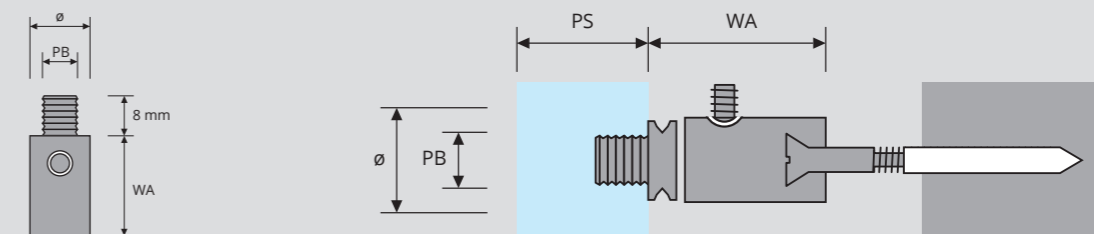


Letter fastener for indoors and outdoors

Article no.	Diameter \varnothing	Distance f. wall (WD)	Plate thickness (PT)	Plate drilling (PD)	Fastening	Material
1403.510	12	15	≥ 15	M4	drywall screw.	ALU, E6/EV1
1404.510	12	20	≥ 15	M4	drywall screw	ALU, E6/EV1
1405.510	12	30	≥ 15	M4	drywall screw.	ALU, E6/EV1
1406.510	12	40	≥ 15	M4	drywall screw.	ALU, E6/EV1
1407.510	12	50	≥ 15	M4	drywall screw.	ALU, E6/EV1

The required dimensions are not present? Thanks to our own production we manufacture other sizes and custom made items. Just give us a ring!

Material Aluminium with anodised silver finish.



Accessories

With our range of accessories and additional components you are on the safe side. These parts are perfectly matched for our products.

With this, we give you our promise that everything fits together what belongs together.



Signboard bracket

A simple and low cost method to hang large signboards and posters.

Material: Brass nickel-plated

Article no.	Length	Plate thickness	Material
For indoors			
0606.303	35	1-10	BR, ni
0607.303	45	1-10	BR, ni



Stainless steel cable with ball-shaped head Stainless steel cable and fastening clamp

Stainless steel cables with 4 to 5 mm ball-shaped head are available. Customised cut lengths and alternative ball dimensions can be supplied upon request.

Minimum order quantity 10 m. Fastening clamps for stainless steel cables are also kept in stock. Manual joining clamps and stainless steel cables can be supplied upon request.

Material:
Cables out of stainless steel, galvanised clamps

Stainless steel cable with ball-shaped head

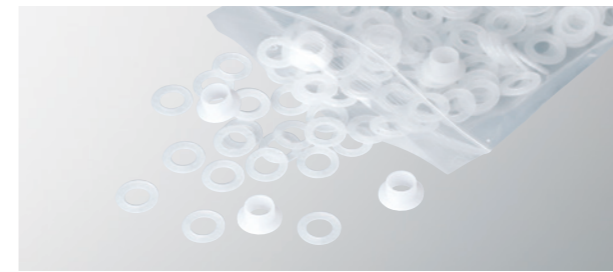
Artikel no.	Cable thickness	Length	Ball diameter	Material
For indoors and outdoors				
8009.101	1,5	750	4-5	SS
8010.101	1,5	1000	4-5	SS
8011.101	1,5	1500	4-5	SS

Stainless steel cable

Article no.	Cable thickness	Material
For indoors and outdoors		
8001.101	1,5	SS

Clamp

Article no.	Cable thickness	Material
For indoors and outdoors		
8005.813	1,5	ZN



Washers and flanged protective sleeves

For levelling of elements or protection. The flanged plastic sleeves protect the glass plates; prevent breakage in the plate drillings for example in the ceiling suspension set.

Material:
Polystyrene, transparent natural

Washers out of Polystyrene

Article no.	Diameter	Internal diameter	Height of flange
For indoors and outdoors			
8060.714	14	8	1,5
8061.714	24	12	1,5
8062.714	14	9,2	2
8063.714	40	17	3
8064.714	25	14	3

Protective sleeve with flange out of Polystyrene

Article no.	Diameter	Internal diameter	Height o. flange	Drilling
For indoors and outdoors				
8070.714	13	7	3	9
8071.714	14	8	4	10
8072.714	18	8,3	5	12



Suction cups

Suction cup with welded threading and knurled screw for fastening onto glass and smooth surfaces. Material: PVC, threading and knurled screw – nickel-plated brass

Article no.	Diameter ø	Threaded pin
For indoors		
8090.714	35	M4
8091.714	50	M4



Other sizes available!

Dowels out of Nylon

Article no.	Size
Outdoors and indoors	
8050.814	S6

Allen keys out of steel

Article no.	Size
Outdoors and indoors	
8080.814	SW 1,5;2;3



Screws also available in stainless steel

Screws out of galv. steel

Article no.	Size
Outdoors and indoors	
8040.814	3,5 x 12
8041.814	4 x 40
8042.814	4 x 50

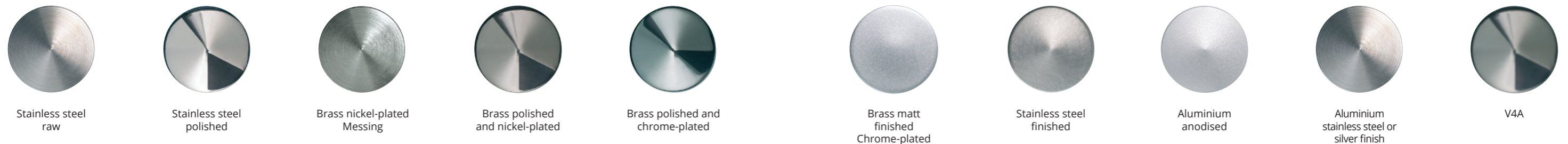
Hanger bolts galv. steel

Article no.	Size
Outdoors and indoors	
8045.814	M4 x 20
8046.814	M4 x 20
8047.814	M4 x 20

Maintenance instructions for our materials

Last but not least: It's all a matter of the right care

For the manufacturing of our high quality turned parts, we only use the best quality of materials such as brass, aluminium and stainless steel. Even so, good raw materials also need good care so that you and your clients have a long-term enjoyment of our products. We suggest, that you follow the maintenance instructions below for materials which are exposed to particular weather conditions as well as other chemical and atmospheric pollutions.



Stainless steel (raw/polished)

Turned parts which are made out of stainless steel are easy to clean, durable and extremely long lasting.

All our stainless steel parts are manufactured with very high care. Even though if the parts are installed outdoors they might still get a rusty surface layer, which you can easily clean with a stainless steel brush or rub off with a soft cloth. The stainless steel parts themselves are thus not affected.

Regular cleaning with water and soap, followed by an application of Vaseline should be enough to protect the parts. You could also use a shop bought stainless steel cleaner. In case of heavy tarnishing you could use a stainless steel polish past which is applied to very fine wire wool. Not suitable for cleaning stainless steel are abrasive cleaning solutions, chrome-, silver or brass polish products.

Brass

If you wish that your unvarnished brass keeps nice and shiny, you should use a good brass polish. In case a patina has developed over time, you need to use some elbow grease and polish a bit harder. To keep the shine you could apply a thin layer of colourless wax or apply a layer of Vaseline.

Brass lacquered / treated with zapon

Brass can be protected against oxidisation with a thin layer of lacquer. The quality of the lacquer determines

the period of protection. To be able to clean lacquered brass you need to remove the lacquered finish. After this you just treat it like unlacquered brass and after the treatment you varnish it again.

Chrome, matt chrome, nickel, stainless steel finish

This is treated brass, which is polished and afterwards nickel- or chrome-plated.

This second metal layer is no protected with a further varnished layer, so no warranty can be give if it is installed outdoors. Cleaning on a regular basis and a treatment with wax or Vaseline will help to maintain the finish of the metal. Damages to the surface can't be repaired.

Chrome, matt chrome, nickel or matt nickel surface are best cleaned with a soft cloth. For cleaning purposes use a cloth and some washing-up liquid, rinse with clear water and dry the surface, do not scour. Deposits of calcium on chrome surfaces are easily removed with vinegar essence.

Anodised aluminium, anodised in stainless steel or silver finish

In addition to its low weight and resistance to the effect of air and water, aluminium features a long service life. By means of surface finish (anodising) the material's visual attributes are improved and its corrosion-resistance increases still further. You can leave aluminium parts outdoors all year round without any worries. To clean soiled aluminium use a damp cloth,

then polish it dry with another. For very stubborn dirt, we suggest you use a special aluminium-cleaner or an aluminium wax.

V4A

Basically all stainless steel parts should be cleaned at regular intervals. Material deposits can be washed off with clean water. Commercial household cleaners, which are suitable to clean stainless steel, can be safely used in conjunction with a soft cloth or sponge. If the cleaning of stainless steel parts with a special detergent is not possible (e.g. under water), simply clean the stainless steel surface by rubbing them. In this way, you will at least counteract the formation of deposits and possible destruction of the passive layer.

Service and advice

If you need any assistance in choosing the right cleaning- and care products or cloths and gloves we are here to help. Just ask!



Our hotline:

+49 (0) 2393 9182 – 5

In case it is urgent – call till 10am, and the items will be shipped to you on the same day!

Call us if you have any questions to our products, or need special measurements or need a special finishing which you can't find in our catalogue. Our specialised workmen in the production have the knowledge and can make (almost) everything possible. Just ask us.

Our service team of KS Drehtechnik is always happy to help.

Terms and Conditions

Scope / range of delivery

For all business between KS Drehtechnik Sauerland GmbH (Register Court: Arnsberg, Trade registration number: 1077) and the purchaser are these terms and conditions in force at the time of the order, even if they haven't been explicit agreed again. Opponent or supplementary conditions of the purchaser, orderer / buyer and verbal agreements are only binding if confirmed by the seller / supplier in writing.

Signing of the contract

All offers are subject to change. The prices listed are binding until they are update. A contract between KS Drehtechnik Sauerland and the purchaser is concluded if the order is made via fax, E-Mail or telephone and a written order confirmation from KS Drehtechnik Sauerland is sent to the purchaser. Illustrations, dimensions and weight specifications in information and promotional materials are non-binding. Printing errors, mistakes and changes are reserved.

Cancellations

The customer is able to cancel his order if they sent an E-Mail or Fax immediately to KS Drehtechnik Sauerland after placing the order. KS Drehtechnik Sauerland confirms the cancellation of the order. Should there be a comprehensible reason such as delayed payments, or non-payment of previous orders, has the seller the right, to revoke or cancel orders.

Prices

All prices are in the mentioned currency and are subject to change they are understood from the place of dispatch, transport costs and tax (VAT) are also applicable. Orders below 25€ have an additional handling charge of 10€. Shipments abroad are only made against pre-payment.

Delivery

The ordered goods are ready for dispatched within the time frame that was agreed with the client. The delivery charges, if not agreed otherwise, are always at the expense of the purchaser. Damage to the purchased goods, which has occurred during transport, needs to be mentioned right away up on arrival too the carrier and/or needs to be reported to KS Drehtechnik Sauerland if the transport was organised by them. Shipping is at the risk of the recipient. In case the products ordered by the customer are not or only partially available, the client will be immediately informed by order confirmation or direct contact. In this case the company KS Drehtechnik Sauerland reserves the right to withdraw from the contract. In case the customer is with the payment of a previous delivery in

arrears the Supplier shall be entitled to withhold deliveries or orders or shall not to accept any of them, without being obliged to compensate any damage incurred by the purchaser.

Ownership

Current account / balance clause (business relationship clause): The seller retains title to the goods until all claims of the seller against the buyer have been settled. This also applies if some or all demands of the seller have been included in a current account and the balance has been drawn and recognized.

Returns Policy

It is possible that the ordered items are returned within max. of 14 days after receiving the goods for a refund of the purchase at the extra cost of a processing fee of 25 €. The goods must be returned in mint condition in their original packaging; the transport costs for the returned goods, except in case of manufacturing defects, are at the expense of the purchaser. In any case, the supplier must be notified in writing prior to the return of goods. Should it be a custom-made product, the return is abrogated. In this case, there is only the replacement policy for defective products or the supplier has the right to decide on a case by case basis whether he exchanges, reproduces or credits the defective products.

Warranty and liability

The warranty period is 24 months from the day of delivery of the goods. Obvious defects must be notified in writing within two weeks after receipt of the goods. In case of warranty, the supplier has the right at his discretion to rectify the defect, replace the goods or refund or credit of the purchase price (replacement goods are delivered free of charge). Should the rectification of a defect or replacement fail, the customer may cancel the contract or request a reduction of the purchase price. Further claims of the customer, particularly compensation claims of the customer are excluded, unless the damage was not caused intentionally or by gross negligence by the supplier or its vicarious agents.

Copyright

Of offers, drawings, samples, photographs, graphics, and other documents the company KS Drehtechnik Sauerland retains the copyrights. They must not be made available to third parties without the consent of the seller. For custom-made products the purchaser is liable that the supplier does not breach any third party rights (including property rights, copyrights, and reproduction rights) with the execution of the order.

Product actuality

The products pictures in the brochures do not always reflect the currently available products. The supplier reserves the right to deliver the successor of the previous product. In any case the customer will be made aware of the change prior to delivery.

Payment terms

The prices at the time of order apply. Invoice reductions such as not agreed discounts, packaging deductions, postage deductions or other deductions to which the supplier has not agreed to, remain as open items and shall be claimed. If payment is delayed, late fees and interest rates will be charged. In case the payment deadline which was set with the 3rd reminder has also lapsed, the claim is transferred to a debt collection agency or a law firm.

Data protection

The personal data made available by the purchaser which is necessary for processing of the contract is stored by the seller so that the order processing can be carried out in a proper manner. The supplier guarantees maximum safety. The company is committed to protect the data of the buyer from any unauthorized access.

Final Clause

If one or more provisions of these Terms and Conditions be invalid, the validity of the remaining provisions shall not be affected. The invalid provision shall be replaced by the relevant statutory provision. Jurisdiction and place of fulfillment is Arnsberg / North Rhine-Westphalia

KS Drehtechnik Sauerland GmbH
Managing Director
Björn Kaldewei

Sundern - Amecke December 2014



Drehtechnik Sauerland

KS Drehtechnik Sauerland GmbH
Illingheimer Straße 33
59846 Sundern - Amecke
Germany

Telephone: +49 2393 9182-5
Fax: +49 2393 9182-71
info@drehtechnik-sauerland.de

www.drehtechnik-sauerland.de