



GridVis®-Energy Software

Web visualisation for your energy management

## Record and display energy data, reduce costs

With rising energy costs, increasingly strict environmental regulations and high competition pressure, energy management is increasingly gaining in significance.

Only when energy data is logged, displayed and evaluated is it possible to initiate measures for reducing energy consumption and enhancing efficiency, thereby also saving costs.

GridVis®-Energy is a web-based solution for your energy management, for the display of your energy data. With GridVis®-Energy you gain a qualified tool, which optimally satisfies the stricter requirements for increased transparency and flexibility in the operational utilisation of resources. Thanks to the comparison options for your energy data, you can use benchmarks to optimise your strategy and implement long-term and short-term aims.

A server with pre-installed software is already provided in the scope of delivery for simple integration in your IT infrastructure. You obtain a complete solution!

In addition to standardised templates, widgets, websites, graphs, colours, icons, etc. are adapted to the corporate design of your company. If new widgets or sites are required at a later date, these can be created by Janitza and integrated without delay. An integrated website configurator can be used to edit dashboards using drag and drop. The intuitive operation allows you to create various graphs, tables, etc. and freely position these on so-called dashboards.

With GridVis®-Energy, the energy data can be called up from anywhere in the world via internet and/or intranet and can also be displayed directly in the browser on mobile devices such as the iPad. GridVis®-Energy provides you with a convenient complete solution without a great need for training.



# GRIDVIS-ENERGY

## Energy data any time and any place

Your secure, sustainable and efficient handling of electrical energy is our top priority. We therefore supply you with diverse modular products, ranging from the universal measuring device through to class A power quality analysers. The grid visualisation software GridVis® constitutes an elementary component.

Presenting your energy data on the internet and/or intranet not only enables users of your company network to access the information they require, this is also made accessible to authorised personnel in branches, partners, field sales employees and external service providers.

With the aid of GridVis®-Energy, the energy consumed or generated by a system is made transparent and the optimisation potential becomes visible.

Thanks to the open communication interface REST, it is possible to consolidate measurement data from a wide range of systems on a central portal.

Maintenance technicians, facility managers, energy managers, controllers and system operators are able to monitor the correct operation of their systems on a conventional browser in real-time at any time via GridVis®-Energy, or display historic measured values via graphs.

### Your advantages at a glance

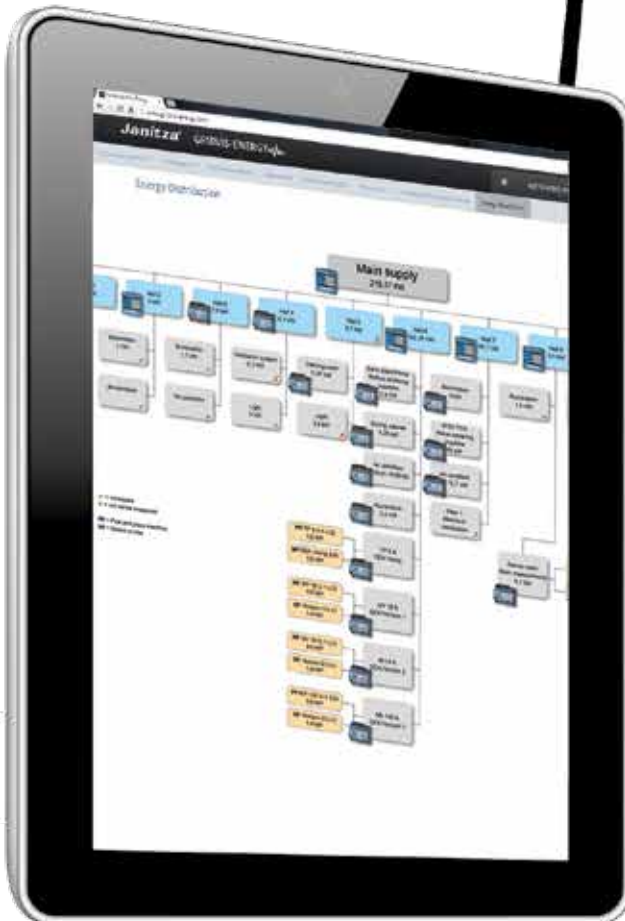
- Central logging of your energy data
- Global availability of the measured data via the internet and/or intranet
- Seamless integration in the existing IT-Infrastructure
- Consolidation of the de-centrally distributed systems on one server
- Display of all system data in real-time
- Detailed analysis of your energy data with the network visualisation software GridVis®
- Simple integration of new measuring devices
- Faster Janitza support via remote access (mandatory)
- User management



## Energy transparency

**Your energy distribution at a glance**

Using your energy distribution you not only maintain an overview, you can also navigate to the respective measuring point directly by simply clicking on it.





**Energy template screen**

The energy template screen contains a clear overview of your energy values, both historically and online. With the heat map (spectral analysis), the cost-driving peak loads are visible at a glance. The bar chart automatically compares the energy consumption in relation to a reference date, e.g. last month vs. the current month (further template pages include e.g. power, current and voltage).

**Sankey diagram (optional)**

The Sankey diagram is the most sophisticated method for energy interpretation and evaluating the energy profile across the entire company. With just one diagram it is possible to see how the energy distribution is configured within your company, what the largest electrical loads are and where the unlogged loads or the losses are arising. This allows you to define definitive optimisation targets and display the successes with the next audit.



# Visualisation of your energy data

Type	Device name	Description	IP address	Status	Add template
Janitza-M011	5120-0010	Hauptermessung	TPMNetSecureang11114.46.30000@janitza.com	OK	
Janitza-M011	5120-0011	Beleuchtung Halle 1	TPMNetSecureang11117.guene.ang1111@janitza.com	OK	
Janitza-M011	5120-0049	Beleuchtung Halle 4	TPMNetSecureang11118.guene.ang1111@janitza.com	OK	
Janitza-M004	7000-0214	Heizung Halle 1	TPMNetSecure118.118.11.8170000@janitza.com	OK	
Janitza-M004	7000-0240	Beleuchtung Deckenleuchte	TPMNetSecure118.118.11.8170000@janitza.com	OK	
Janitza-M004	7000-0038	Beleuchtung Halle 2	TPMNetSecureang11119.guene.ang1111@janitza.com	OK	
Janitza-M011	5120-0023	Beleuchtung Halle 6	TPMNetSecureang11120.guene.ang1111@janitza.com	OK	
Janitza-M004	7000-0204	Beleuchtung Halle 1	TPMNetSecure118.118.11.8170000@janitza.com	OK	
Janitza-M011	5120-0009	Baum	TPMNetSecureang11121.guene.ang1111@janitza.com	OK	
Janitza-M004	7000-0080	3-Ph-Real Power 2.7 Befestigung	TPMNetSecure118.118.11.8170000@janitza.com	OK	
Janitza-M004	7000-1903	RF 10 Betriebszustand	TPMNetSecure118.118.11.8170000@janitza.com	OK	
Janitza-M004	7000-0007	Beleuchtung Halle 1	TPMNetSecure118.118.11.8170000@janitza.com	OK	
Janitza-M004	7000-0018	TP 9 Betriebszustand & DEK-Alarm	TPMNetSecure118.118.11.8170000@janitza.com	OK	
Janitza-M004	7000-0040	Tourenverkehr	TPMNetSecure118.118.11.8170000@janitza.com	OK	
Janitza-M004	7000-0039	RF 10 Betriebszustand & DEK-Alarm 1	TPMNetSecure118.118.11.8170000@janitza.com	OK	
Janitza-M004	7000-0010	RF 12 Betriebszustand & DEK-Alarm 2	TPMNetSecure118.118.11.8170000@janitza.com	OK	
Janitza-M004	7000-0033	Beleuchtung Halle 4	TPMNetSecure118.118.11.8170000@janitza.com	OK	
Janitza-M004	7000-0075	Temperaturmessung	TPMNetSecure118.118.11.8170000@janitza.com	OK	

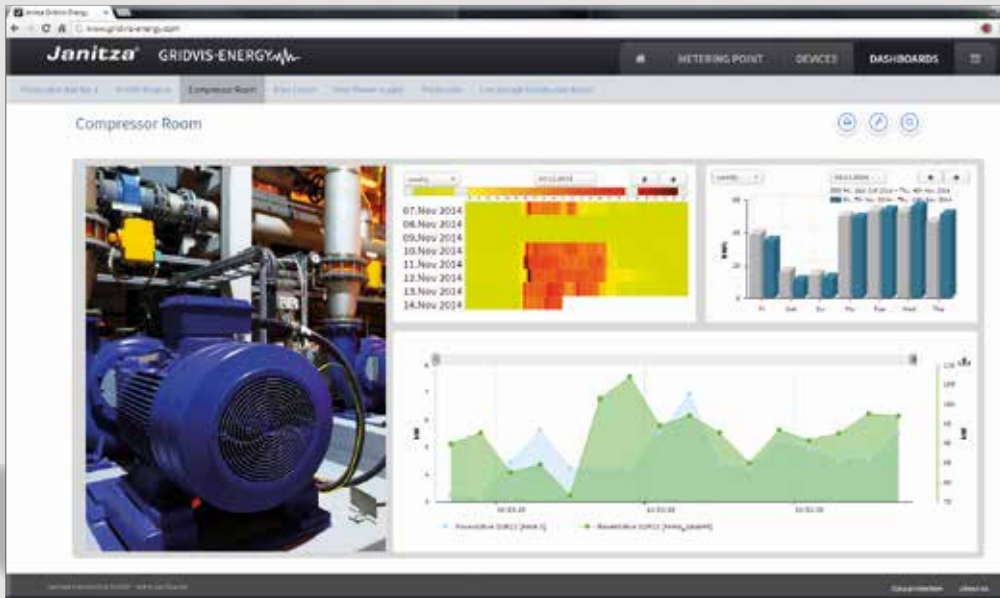
**Predefined templates**

The device list contains a list of all implemented measuring devices. It is possible to store various templates for each respective measuring device.



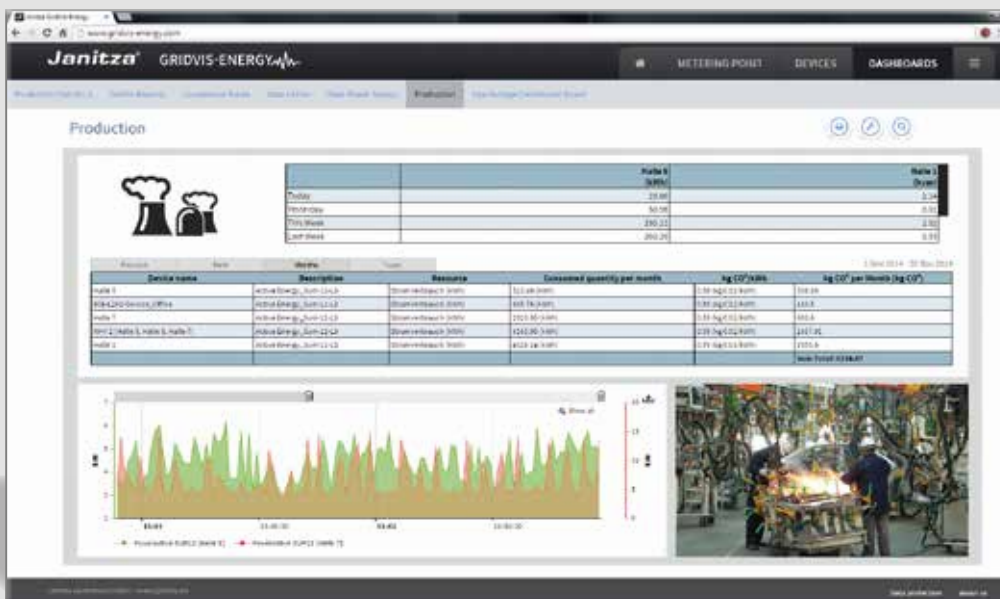
**Complete overview**

Using the large selection of widgets you can define dashboards according to your wishes. Be it line graphs, bar charts, donut charts, etc.: We shall be delighted to support you in defining a suitable dashboard for your optimally configured energy analysis.



**Benchmark and key figures**

In GridVis®-Energy you can compare various energy consumers for example, or establish and display key figures. Using a virtual meter it is possible to consolidate measuring points or maintain non-energetic values through manual value entry.



**Creating your own dashboards**

A simple, intuitive user interface is provided to create your own dashboards via the web. First the desired display format is selected (e.g. bar chart) and then the measuring device or measured value. The display can then be positioned anywhere on the dashboard using drag and drop.

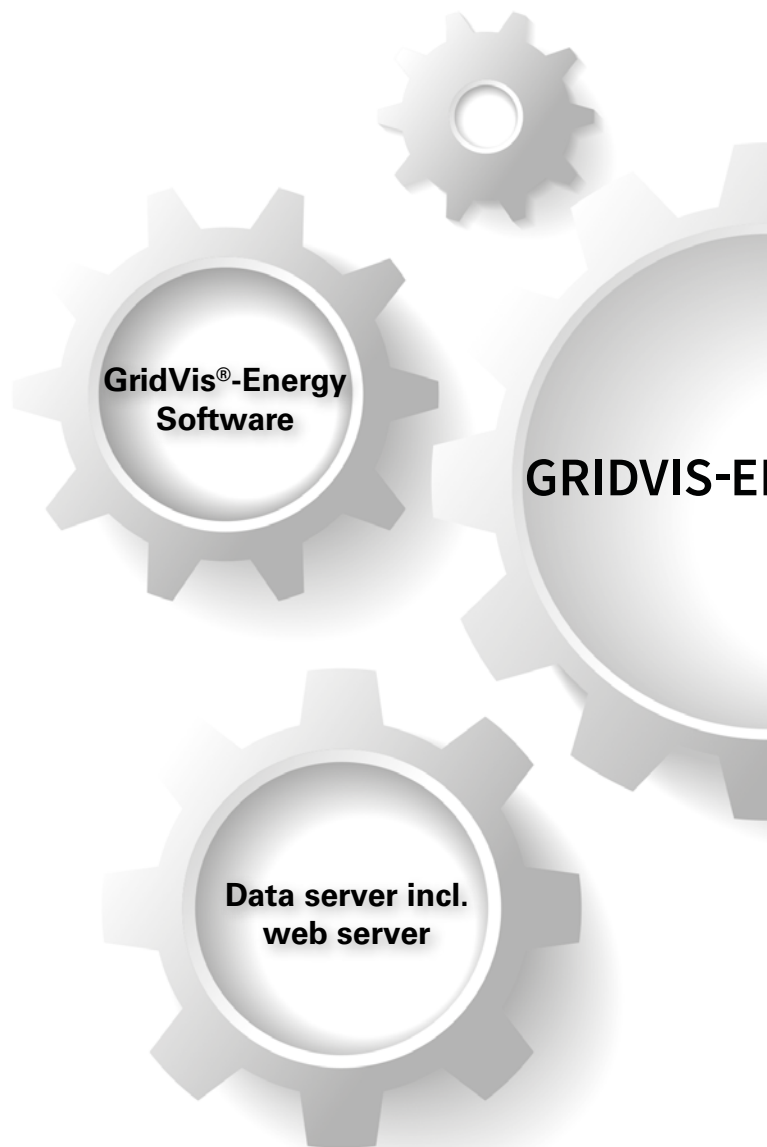
## Included in GridVis®-Energy

### GridVis®-Energy Software

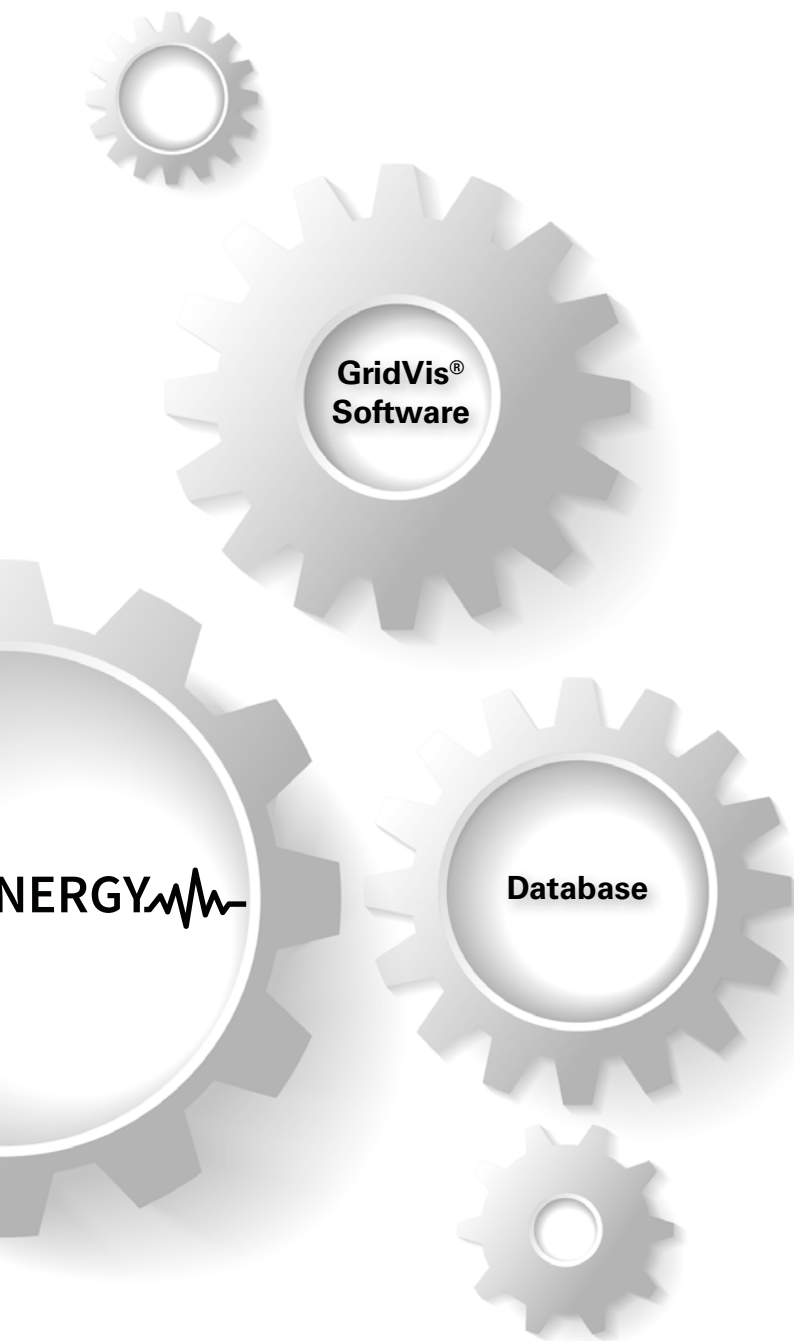
- 100% web-based
- Complete solution comprising server and software
- Access to the energy data independent of location (internet/intranet)
- Display of online and historic energy data
- No limit to the data points, number of websites and users
- Compare your production sites
- Energy analysis and display of key figures
- Various energy types (current, gas, etc.) or all measured values of the Janitza UMDs
- Integrated website configurator
- Animated widgets and real-time graphs
- Optimised presentation on the laptop and tablet
- Communication via the open REST interface
- Various languages (D, EN, ...)
- Faster support via remote access
- Maintenance of your systems
- Display of the Modbus devices of third party suppliers

### Data server

- Data server with optimally configured processor power
- Operating system: Windows Server 2008 R2 SP1 Standard Edition
- Main memory: 16 GB
- Hard disc 1TB SATA 7.2k
- The processor power and memory volumes are aligned with the project and number of measuring devices







## GridVis®-Service Software

- Software is TÜV-certified according to ISO 50001 and BAFA compatible
- Configuration and device setting of the universal measuring devices, data collectors, mains analysers
- Read-out, saving, display, editing, analysis and evaluation of measurement data
- Automatic report generation
- Automatic Excel export
- Automatic or manual readout of measurement data
- Database management (central saving of all measured data)
- Measurement device management
- Cost centre management
- Power quality monitoring
- Alarm management
- JASIC application programming
- Specialised tool for in-depth analyses

## Database

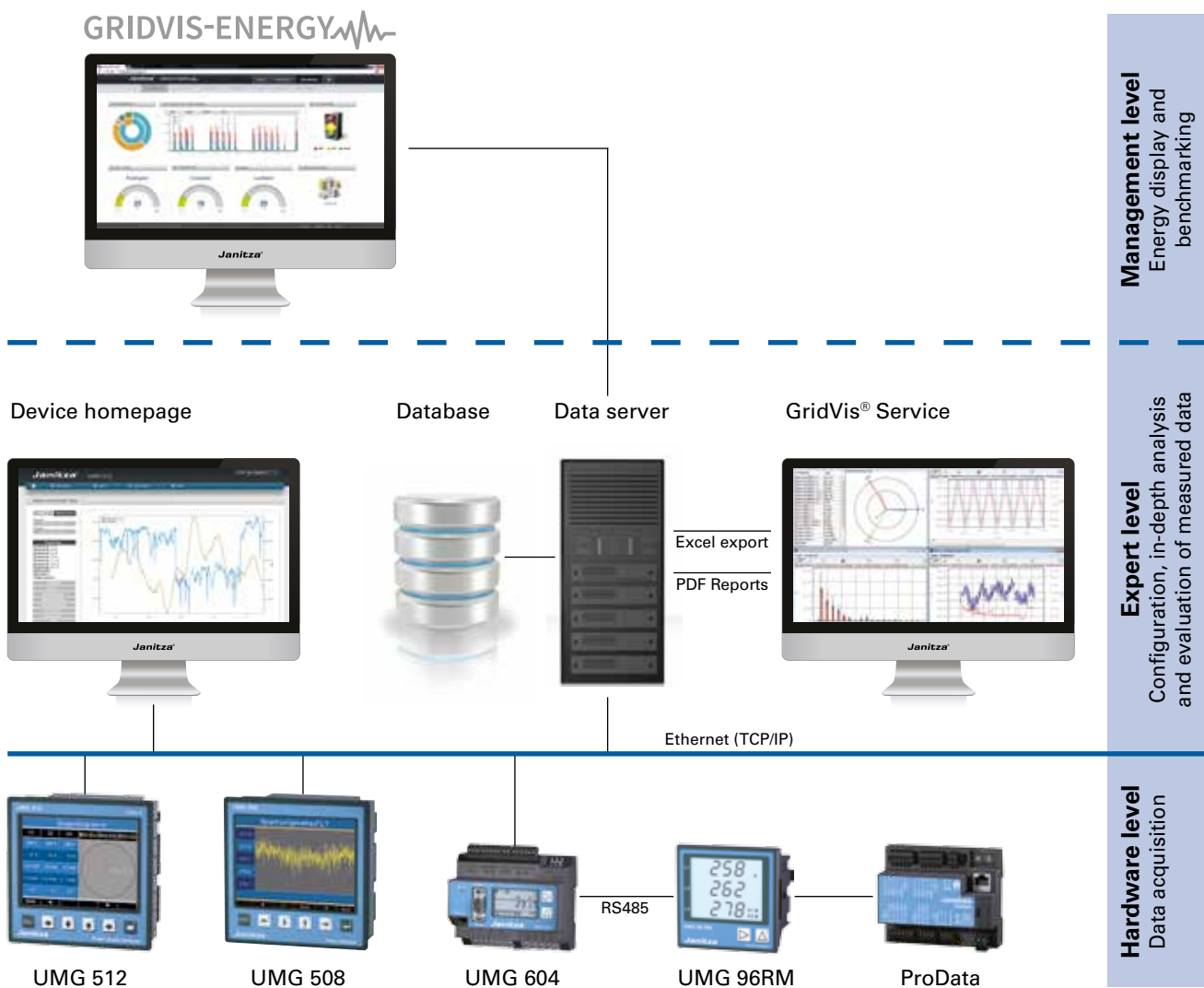
- Generation of the Janitza database by GridVis® for storing the measurement data
- The database has been specially optimised for GridVis®
- Extremely high performing
- Supplied together with GridVis®
- No additional costs
- No additional installation effort
- MSSQL and MySQL DB supported (to be supplied by the client)



<b>GridVis®-Energy Software</b>	Display of energy data on the web
<b>GridVis®-Service</b>	Configuration and analysis tool
<b>Data server</b>	With optimally configured processor power*
<b>Janitza database</b>	Optimised for GridVis® (MySQL & MS SQL are supported)
<b>Number of measuring devices</b>	Unlimited
<b>Number of data points</b>	Unlimited
<b>Number of users</b>	Unlimited
<b>Number of websites</b>	Unlimited
<b>Item number</b>	<b>51.00.250</b>

\* Standard configuration for 200 measuring devices, on request with greater number of measuring devices.

## GridVis®-Energy Structure



Janitza electronics GmbH  
Vor dem Polstück 1  
D-35633 Lahnau  
Germany

Tel.: +49 6441 9642-0  
Fax: +49 6441 9642-30  
info@janitza.de  
www.janitza.com



Item no.: 33.03.684 • Doc no.: 2.500.078.0 • Version 11/2014 • Subject to technical alterations.