

# DATAPAQ

## Oven Tracker<sup>®</sup> XL2

*keep your coating cure process on target*



Fluke Process Instruments

# DATAPAQ

## Datapaq® Provides Profiling Solutions

Since 1984, the name Datapaq® has become synonymous with temperature profiling in the paint and powder coatings industry worldwide. With a reputation for accuracy, ease-of-use and reliability, Datapaq continues to set the industry standard for excellence. Datapaq is the preferred choice in temperature profiling and continues to provide systems that exceed the demands of the harshest thermal processes.

### The XL2 Solution...

Datapaq continuously listens to the needs of its customers and their process demands. As these needs change, so do the solutions. Datapaq is proud to offer the XL2 as the latest generation of Oven Tracker systems... a robust, comprehensive, intelligent and easy-to-use oven temperature profiling system.

Offering revolutionary new functions, the new XL2 ensures routine oven profiling is easier than it has ever been before.

### A GREEN LIGHT TO ...



- Quality
- Process control
- Productivity
- Reduced costs



## Intelligent Data Logger...

Designed with the customer in mind, the XL2 continues the Datapaq Oven Tracker tradition with its unique two-part data logger design.

### Real-Time Monitoring

Use the XL2 system outside of your batch oven, enabling you to record data live, directly to your PC. Ideal for R&D work, IR repair oven testing and any batch cure process.

**SmartPaq** enables you to preprogram the MemoryPaq with your process pass/fail criteria, based on either Datapaq Value, Time at Temperature or Maximum Temperature. The intelligent XL2 data logger will indicate if your process is out of control immediately upon exit from the oven.

At the oven exit, remove from the protective thermal barrier and check the indicator on the MemoryPaq. A green LED means a successful run, so you can continue with confidence.

Red indicates a problem. Stop production until the profile data has been analyzed. Corrective action can then be taken to rectify any process problems.

**Intelligent multiple run** capability allows complete consecutive profiling runs without downloading individually. This eliminates the need to return to the QA office between profiling runs, saving time and effort.



## Thermal Protection you can trust...

Datapaq has invested over twenty years of advanced thermal barrier development and now offers the most comprehensive range of barriers available in the industry.

When sending an Oven XL2 temperature profiling system through your oven, you need absolute confidence that your data logger is protected from the harsh environment inside your oven process.

The standard XL2 barrier, designed specifically for use on automotive paint lines, has a patented Silicone free construction, eliminating the worry of contamination issues and paint finish defects, and help you to provide the high quality you are constantly required to achieve.

In addition to the standard XL2 barrier, Datapaq also provides a range of thermal barriers to suit other specialized process needs.

## Measure your process data with confidence...

The XL2 system provides a comprehensive range of thermocouple options to suit your process or product needs. Measure those tight, difficult to access recesses on a car body with ease, convenience, accuracy and confidence.

All K type thermocouples are specified to Special Limits of Error; guaranteeing the highest level of accuracy.

Glass fiber and mineral insulated cable options are available for higher temperature processes.



## Meet the Challenges of your Coating Process

- Automotive assembly (OEM)
- Automotive component supply
- Paint, powder and lacquer supply
- Appliance manufacturer
- General industrial
- Architectural metalwork
- Metal packaging (2 & 3-piece can)
- PTFE and Dacromet high temperature coating
- Textile coating (finished garment)
- Custom coating
- Oven Manufacturers

## Bring Benefits to your Business

Send the XL2 system through the oven and discover the true potential of your finishing operation. Use the product and oven temperature data to take your operation to the next level of quality and profitability.

### Product finish quality

Prove that your oven provides the necessary cure schedule to give the physical and cosmetic properties you require. Prevent under cure or over cure issues, the risk of downtime, costly rejects or rework and product recalls.

### Process validation

Create the certified traceable profile report to prove to any customer and regulatory body (Qualicoat; ISO9000; CQI-12) that your process is in control. The single page report could win you that next contract.

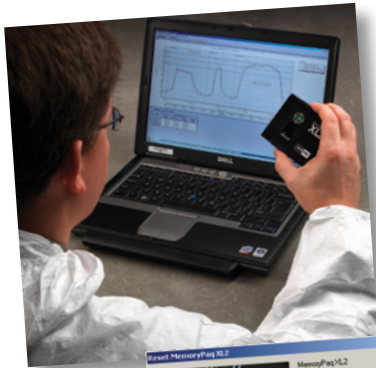
### Optimize productivity and efficiency

Use accurate profile data to optimize your oven. Maximize line speed to give optimal productivity, without risking product quality. Make oven temperature set-point adjustments to minimize power consumption. Imagine the potential energy cost savings you could achieve over the next 12 months!

### Rapid problem solving

Highlight oven problems immediately and use data information to recommend corrective action. Prove that any service or maintenance carried out has been successful. Remember, each lost hour of production is costly to your company.

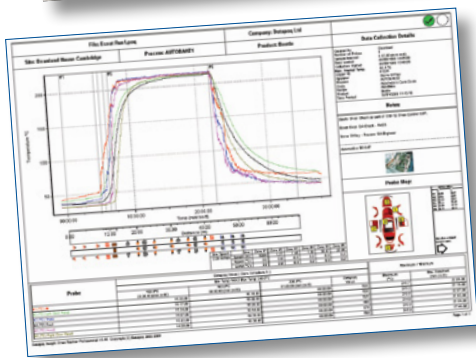
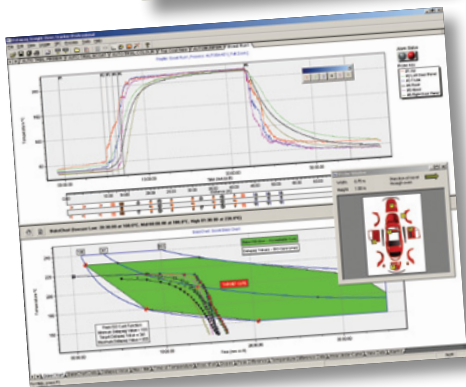
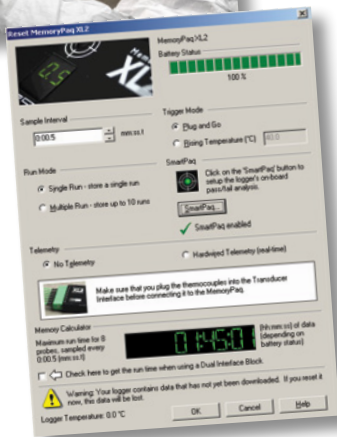




## Making a Difference

### The benefits of Insight™ Professional

The powerful Insight analysis software has been designed specifically by Datapaq to convert raw temperature data into meaningful information that can be used to understand, control and optimize your cure process. Complex calculations are simplified, allowing quick and comprehensive analysis. Detailed information on your oven gives you the reporting power you need in a single page report. It's easy to use, highly accurate and efficient.



Choose the level of functionality to suit your needs

- **Insight Professional** – customizable full Insight analysis package; designed for top-level use within the automotive industry.
- **Insight Basic** – basic Insight analysis package; designed for XL2 entry-level operation.

Ease-of-use for the technical specialist through to line operator

- **Wizard operation** – the user is guided step-by-step through the setup of key analysis features, with easy-to-follow steps through all necessary tasks in the correct sequence. Useful as a training aid, too.

- **New analysis tools** designed to satisfy the highest specification demands, as used in automotive assembly:

- i. BakeChart Analysis and Datapaq Value
- ii. Auto update SPC (Statistical Process Control)
- iii. Ramp up analysis tool
- iv. Temperature Difference Probe tool
- v. Probe Location Product Map with linked photo library
- vi. Advanced reporting capability

- Includes a comprehensive, context sensitive Help function.
- Insight analysis software is available in many international languages

### THE DATAPAQ GUARANTEE

Each Datapaq system is supported with a full one year warranty. Complementing the warranty, we offer a yearly service and re-calibration contract, which includes free software updates and loan equipment for guaranteed peace of mind.\*

\* Dependent on country.

## Fluke Process Instruments

**EMEA**  
Cambridge, UK  
Tel: +44 1223 652 400  
sales@flukeprocessinstruments.co.uk

**Americas**  
Derry, NH USA  
Tel: +1 603 537 2680  
sales@flukeprocessinstruments.com

**China**  
Beijing, China  
Tel: +86 10 6438 4691  
sales@flukeprocessinstruments.com.cn

**Asia East and South**  
India Tel: +91 22 2920 7691  
Singapore Tel: +65 6799 5596  
sales.asia@flukeprocessinstruments.com

**Worldwide Service**  
Fluke Process Instruments offers services, including repair and calibration.  
For more information, contact your local office.

[www.flukeprocessinstruments.com](http://www.flukeprocessinstruments.com)

© 2016 Fluke Process Instruments  
Specifications subject to change without notice.  
11/2016 OvenXL2 Brochure RevB

