

# Tank construction

Customised exactly for the integration into your process

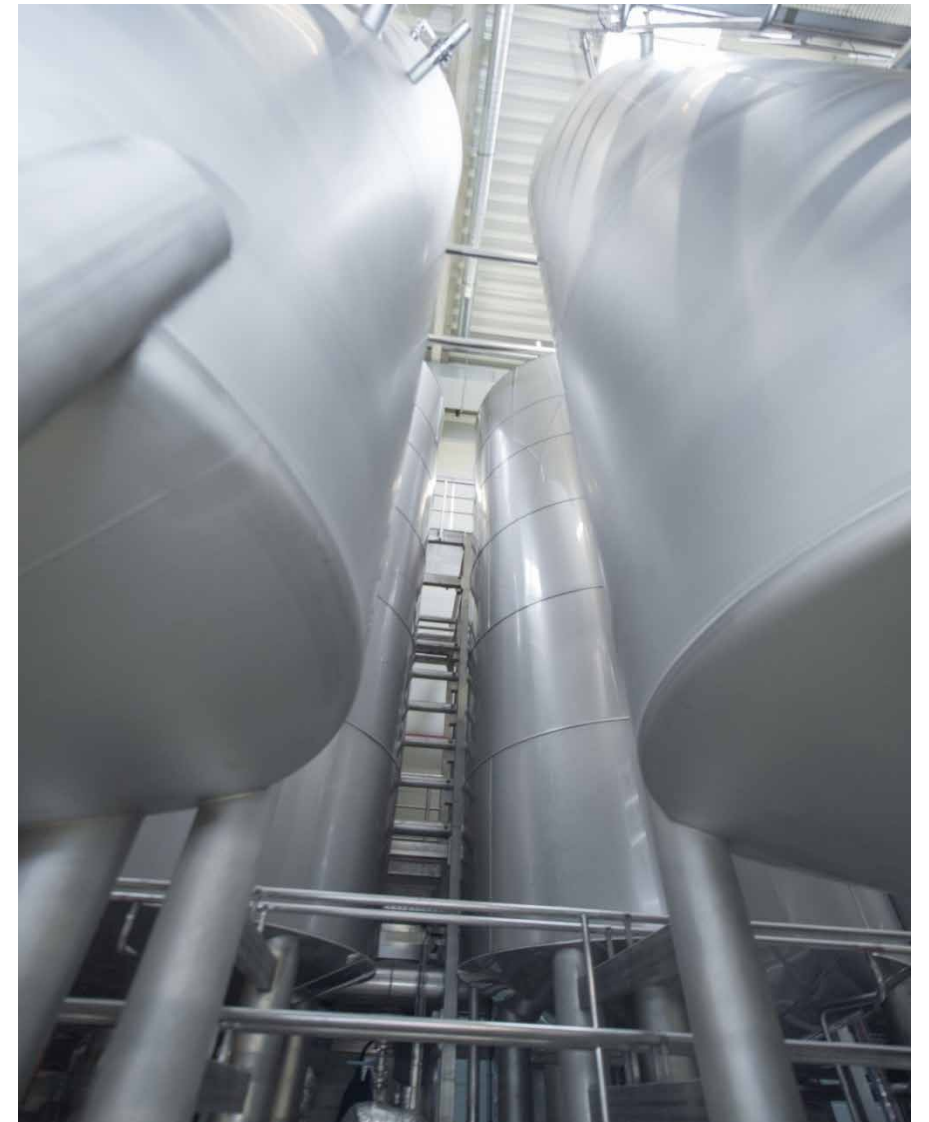


## Configured specifically for the respective process

The ideal tank is customised for your application and optimally designed for the respective technological process. This is exactly our offer to you with our tank programme. The selection of materials, dimensions and required assemblies is performed custom-fit for your processes with program-controlled production machines guaranteeing highest tank quality. Our tank programme meets all user specifications for the beverage and food industry as well as the chemical and petrochemical industry and bio-fuel production.

### At a glance

- Storing and production tanks according to the individual specifications
- Perfect integration for different processes
- Manufacture depending on to the container design in the plant or on-site





## Tank and container features

	Design
Size	Up to 8,000 hl, maximum diameter of 7,500 mm
Construction/shape	Round (vertical and horizontal), other designs on request
Process tanks	For heating, cooling, mixing, dissolving, storage, fermentation, homogenisation, cleaning, ...
Type of content	Liquid, gaseous, paste-like, in powder form, granular
Material	Rust-proof stainless steels, all common austenitic or duplex steels on request
Surface	Weld seams inside: polished; inside and outside: pickled for standard sizes. Ceramic-blasted outside for containers up to 300 hl; non-standard sizes on request.
Pressure tanks/regulations/licences	ASME, RTN, Gost-R, ML-China, DIN EN ISO 3834-2, consistent with DGRL 97/23/EG
Fixtures/equipment	All fixtures (agitators, guide plates, spraying devices)
Peripherals	Platforms, substructures
Piping	Pressurised and pressureless pipe systems
Coating	Primary coat; coat of paint on request
Insulation/housing	Insulation (PIR and PU foam, mineral wool) and cladding (gastight or riveted)



## Optimal production conditions for your tanks and vessels

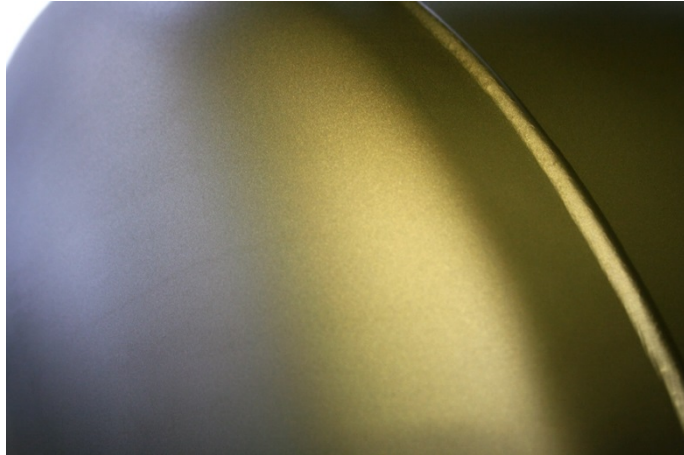
- Manufacturing hall designed specifically for the tank construction
- Automated methods for vessel-dome and shell production
- The working steps are precisely attuned to each other and carried out by qualified welders
- High-performance and program-controlled production machines for cutting, drawing and welding work
- Highest quality through a globally recognised and standardised welding and inspection procedure
- Surface treatment with polishing and pickling solutions, also ceramic blasting of the outside surfaces





## Surface quality

### Outer surfaces



Blasted

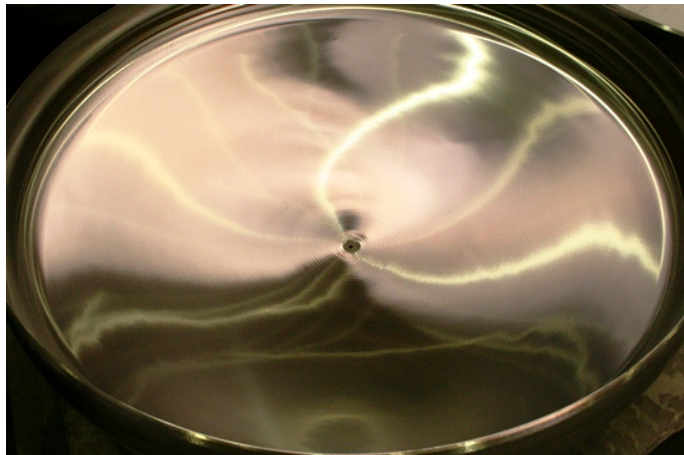


Pickled bright finish



Grounded K80

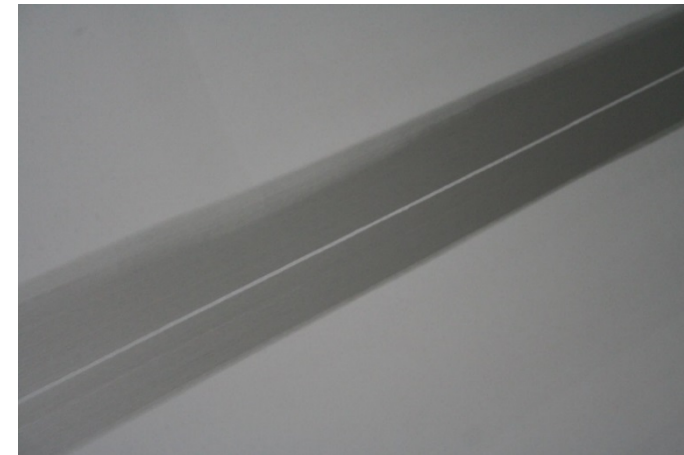
### Inner surfaces



Grounded Ra 0.8 µm



Pickled bright finish, raised seams



Pickled bright finish, grounded seams



## Benefits to you

### **Short delivery times**

We do not hand over your tank to others. Therefore, our manufacturing time budget allows for tight scheduling of construction and expansion measures for your production plant.

### **The quality is right**

Our precision of manufacture and processing becomes evident when looking at the surfaces. Our certificates are the best prove when you can tell no more difference with the naked eye.

### **Customised installation**

Highest precision is our standard for the inclusion of allocated connections of the peripherals all around the tank.

### **Pressure tank according to standard regulations**

Our up-to-date manufacturing and inspection methods also qualify us for the manufacture of pressure tanks. Our own projects such as the brewing business prove this at its best.

### **Experience in process technology**

Thanks to our profound technological and process-related knowledge, we are very well aware of your demands placed on tanks, and we can provide support in selecting the appropriate materials, geometries and designs.



## Everything from a single source

### **KIC KRONES cleaning agents make your machine shine**

Only if the production environment is immaculate, can your product be brilliant. KIC KRONES provides you with the optimum cleaning agents and disinfectants for each individual production step.

### **Lubricants from KIC KRONES for every production step**

Whether for gears, chains or central lubrication systems – our greases and oils are true all-round talents. They can reach every lubrication point, protect your line and ensure gentle treatment for your products thanks to their food-grade quality.

### **EVOGUARD – excellent valve technology all along the line**

The valve series of EVOGUARD comprises a modular system with hygienic and aseptic components which contributes to every point of the production line with increased performance and which has the perfect solution for every process step.

### **EVOGUARD – pumps for absolute process safety**

In addition to the separation and locking of a line, one thing is particularly important - and that is the reliable conveyance of your product. This is why EVOGUARD also offers innovative centrifugal pumps in addition to high-quality valves.



Digitalisation



Process  
technology



Bottling and  
packaging equipment



Intralogistics



Lifecycle  
Service

We do more.

 **KRONES**