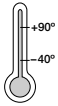




DryLin® | Trapezoidal Lead Screw Nuts

Until now, there have been two types of trapezoidal lead screw nuts: lubricated metallic nuts, or maintenance free plastic versions with very restricted load capacity. iglidur® trapezoidal lead screw nuts are now closing the gap: They are fully maintenance free and take high loads.



DryLin®
Threaded Nuts

Technical Data

Sliding elements:

Maintenance-free

Material:

igidur® W300

igidur® J

Temperature range:

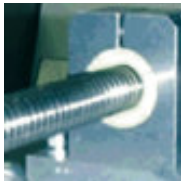
-40 °C to +90 °C

Other calculation

► Page 3.125



Phone: +49 (0) 22 03-96 49-145
Fax: +49 (0) 22 03-96 49-334



DryLin® trapezoid threaded nuts made of iglidur® W300
► Page 1.54

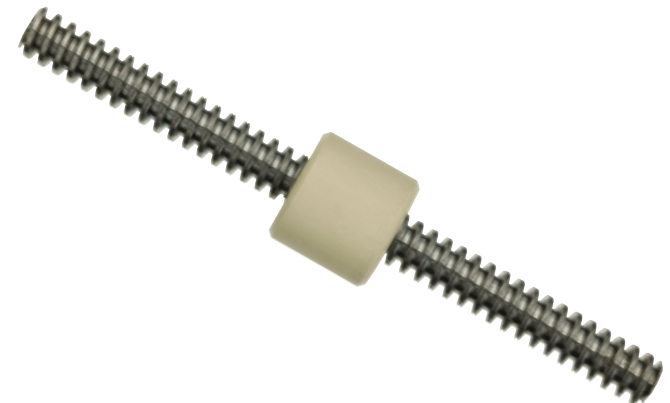
Advantages of DryLin® Threaded Nuts

- Self-lubricating
- Resistant to dirt
- Maintenance-free
- Best resistance to binding
- Corrosion-free
- Quiet operation
- Temperature resistant up to 90 °C
- Trapezoidal lead screws manufactured from steel, stainless steel and anodized aluminum on request
- Left-handed leadscrew nuts on request
- Further information about iglidur® W300 properties on page 1.54

igus® GmbH
51147 Cologne



Trapezoid threaded nuts are an ideal supplement to DryLin® maintenance-free linear bearings



Internet: www.igus.de
E-mail: info@igus.de

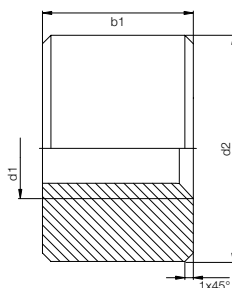


Dimensions based on DIN 103



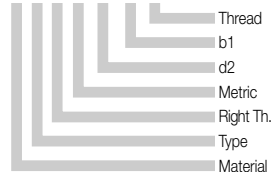


igus® DryLin® WSRM | Trapezoidal Lead Screw Nuts



Structure – Part No.

W S R M-22 15 TR10x2



Material:

W for iglidur® W300

J for iglidur® J*

DryLin®
Threaded Nuts

Phone: +49 (0) 22 03-96 49-145
Fax: +49 (0) 22 03-96 49-334

igus® GmbH
51147 Cologne

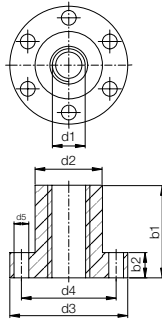
Internet: www.igus.de
E-mail: info@igus.de

Dimensions [mm]

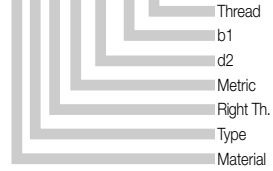
Part No.	Supporting surface [mm ²]	d1	d2	b1	TR d1 x P	Max. static F [N]
Short Version						
WSRM-2215TR10x2	212	10	22	15	TR 10 x 2	1060
WSRM-2215TR10x3	200	10	22	15	TR 10 x 3	1000
WSRM-2618TR12x3	296	12	26	18	TR 12 x 3	1480
WSRM-3021TR14x4	396	14	30	21	TR 14 x 4	1980
WSRM-3624TR16x2	564	16	36	24	TR 16 x 2	2820
WSRM-3024TR16x4	526	16	30	24	TR 16 x 4	2630
WSRM-3624TR16x4	526	16	36	24	TR 16 x 4	2830
WSRM-3027TR18x4	678	18	30	27	TR 18 x 4	3390
WSRM-4027TR18x4	678	18	40	27	TR 18 x 4	3390
WSRM-3025TR20x4	706	20	30	25	TR 20 x 4	3530
WSRM-4530TR20x4	848	20	45	30	TR 20 x 4	4240
WSRM-5036TR24x5	1214	24	50	36	TR 24 x 5	6070
WSRM-5039TR26x5	1438	26	50	39	TR 26 x 5	7190
WSRM-6042TR28x5	1680	28	60	42	TR 28 x 5	8400
WSRM-6045TR30x6	1906	30	60	45	TR 30 x 6	9530
Long Version						
WSRM-2220TR10x2	282	10	22	20	TR 10 x 2	1410
WSRM-2220TR10x3	266	10	22	20	TR 10 x 3	1330
WSRM-2624TR12x3	394	12	26	24	TR 12 x 3	1970
WSRM-3028TR14x4	526	14	30	28	TR 14 x 4	2630
WSRM-3632TR16x2	702	16	36	32	TR 16 x 2	3510
WSRM-3632TR16x4	752	16	36	32	TR 16 x 4	3760
WSRM-4036TR18x4	904	18	40	36	TR 18 x 4	4520
WSRM-4540TR20x4	1130	20	45	40	TR 20 x 4	5650
WSRM-5048TR24x5	1620	24	50	48	TR 24 x 5	8100
WSRM-5052TR26x5	1918	26	50	52	TR 26 x 5	9590
WSRM-6056TR28x5	2240	28	60	56	TR 28 x 5	11200
WSRM-6060TR30x6	2542	30	60	60	TR 30 x 6	12710

* Trapezoidal lead screw nuts made from iglidur® J in various sizes are available upon request

DryLin® WFRM | Trapezoidal Lead Screw Nuts



Structure – Part No.
W F R M-22 15 TR10x2



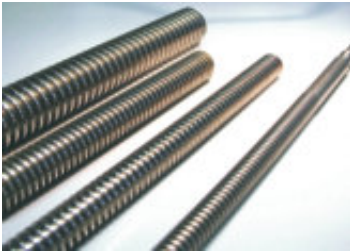
Material:
W for iglidur® W300
J for iglidur® J*

Dimensions [mm]

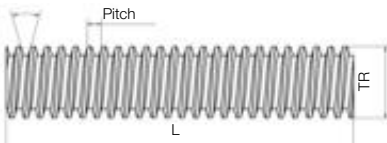
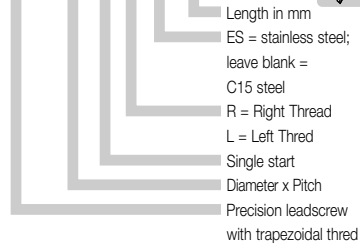
Part No. With Flange	Supporting surface [mm ²]	d1	d2	d3	d4	d5	b1	b2	TR d1 x P	Max. static F [N]
WFRM-2525TR10x2	352	10	25	42	34	5	25	10	TR 10 x 2	1760
WFRM-2835TR12x3	576	12	28	48	38	6	35	12	TR 12 x 3	2880
WFRM-2835TR14x4	658	14	28	48	38	6	35	12	TR 14 x 4	3290
WFRM-2835TR16x4	768	16	28	48	38	6	35	12	TR 16 x 4	3840
WFRM-2835TR18x4	878	18	28	48	38	6	35	12	TR 18 x 4	4390
WFRM-3244TR20x4	1242	20	32	55	45	7	44	12	TR 20 x 4	6210
WFRM-3244TR24x5	1484	24	32	55	45	7	44	12	TR 24 x 5	7420
WFRM-3846TR26x5	1696	26	38	62	50	7	46	14	TR 26 x 5	8480
WFRM-3846TR28x5	1840	28	38	62	50	7	46	14	TR 28 x 5	9200
WFRM-3846TR30x6	1948	30	38	62	50	7	46	14	TR 30 x 6	9740

* Trapezoidal lead screw nuts made from iglidur® J in various sizes are available upon request

DryLin® | Leadscrew with trapezoidal thread



Structure – Part No.
PTGSG-10x2-01-R-ES-1000



Special Properties

- **Thread:** right or left
- **Material available:**
C15 steel
stainless steel
- **Length and reworking** according to customer drawings

Dimensions [mm]

Part No.	Thread Length [mm]	TR	Pitch	Max. Length [mm]
PTGSG-10x2-R/L	10	2	1000	
PTGSG-10x3-R/L	10	3	1000	
PTGSG-12x3-R/L	12	3	2000	
PTGSG-14x4-R/L	14	4	3000	
PTGSG-16x4-R/L	16	4	3000	
PTGSG-18x4-R/L	18	4	3000	
PTGSG-20x4-R/L	20	4	3000	
PTGSG-24x5-R/L	24	5	3000	
PTGSG-26x5-R/L	26	5	3000	
PTGSG-28x5-R/L	28	5	3000	
PTGSG-30x6-R/L	30	6	3000	

