



igubal® Spherical Thrust Bearings

Phone +49 - 22 03 - 96 49-145  
Fax +49 - 22 03 - 96 49-334

## igubal® Spherical Thrust Bearings



Easy to install

Compensation for misalignment

Compensation for edge loads

Very good friction and wear properties



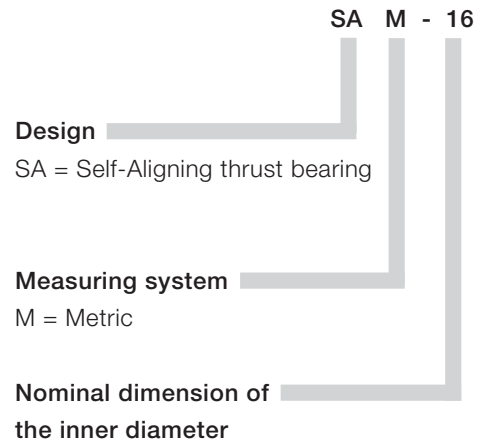


# igubal® | Spherical Thrust Bearing



## Structure for Part Numbers of igubal® Spherical Thrust Bearings

The part numbers of igubal® spherical thrust bearings are designed according to the following system:



igubal® self-aligning spherical thrust bearings are very easy to fit and help to compensate for alignment errors and prevent edge loads. The housing pad is made of the impact-resistant, thermoplastic composite material igumid G. The spherical washer is made of the iglidur® W300 plain bearing material. This combination provides exceptionally good friction and wear properties.

### Loads

The load capacity of igubal® spherical thrust bearings is very high for standard ambient temperatures. For high continuous loads and high temperatures, the load capacity of the thrust bearings should be tested in an experiment that simulates the application.

### Coefficients of Friction and Speed

Taking into account the radial load, maximum surface speeds up to 0.5 m/s rotating are possible.

### Installation

The housing pad is installed so that it is countersunk and secured. The spherical washer is loosely fitted in the socket and is held in place by the shaft that is placed into the bearing.

### Product Range

igubal® spherical thrust bearings are available in standard form to suit diameters from 5 to 20 mm. Please contact us if you require other dimensions.

The example shows a spherical thrust bearing with metric dimensions and an inner diameter of 16 mm.

igubal®  
Spherical Thrust Bearings

Phone +49 - 22 03 - 96 49-145  
Fax +49 - 22 03 - 96 49-334

igus® GmbH  
51147 Cologne

Internet [www.igus.de](http://www.igus.de)  
E-mail [info@igus.de](mailto:info@igus.de)

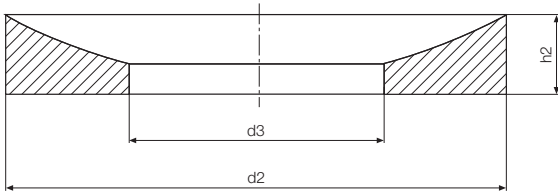


Data in mm

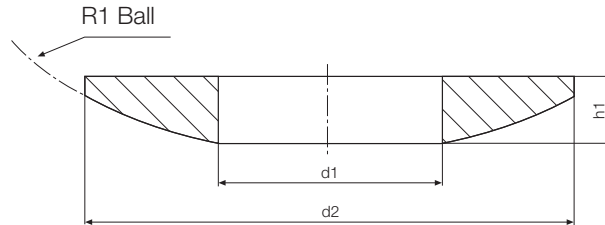
Structure – part no.  
**SA M-05**



### Housing Pad



### Spherical Washer



### Special Properties

- Easy to install
- Compensation for alignment errors
- Prevent edge loads
- Very good friction and wear properties



#### Material

Housing: igumid G  
 ► Page 70.6  
 Spherical Bearing:  
 iglidur® W300  
 ► Chapter 5

### Load Data

igubal® – Spherical Thrust Bearing

Part Number	Maximum Static Axial Tensile Strength Short term	Maximum Static Axial Tensile Strength Long term
	[N]	[N]
SAM-05	4.000	2.000
SAM-06	5.000	2.500
SAM-08	8.000	4.000
SAM-10	10.000	5.000
SAM-12	12.000	6.000
SAM-16	17.000	8.500
SAM-20	22.000	11.000

### Dimensions [mm]

igubal® – Spherical Thrust Bearing

Part Number	d1	d3	d2	h1	h2	H	R1	Compensation	Total
	Housing Pad	Spherical Washer	[mm]	Ball Socket	Spherical Disk	Total Height	Radius [mm]	Angle	Weight [g]
	DIN 7168	DIN 7168		[mm]	[mm]	[mm]			
SAM-05	5,2	7,0	15,0	3,0	3,5	4,7	15,0	3°	0,9
SAM-06	6,2	7,5	16,0	3,0	4,0	5,3	16,0	3°	1,1
SAM-08	8,2	10,0	20,0	4,0	5,0	6,8	20,0	2°	2,2
SAM-10	10,2	12,0	24,0	4,5	5,5	7,5	24,0	2°	3,4
SAM-12	12,5	14,5	30,0	5,0	6,0	8,0	32,0	2°	5,9
SAM-16	16,5	19,0	36,0	5,5	6,5	8,7	40,0	2°	8,5
SAM-20	20,2	23,0	44,0	6,0	7,0	8,6	45,0	2°	12,8

Spherical Thrust Bearings

SAM

mm

Phone +49 - 22 03 - 96 49-145

Fax +49 - 22 03 - 96 49-334



