



PMI® operator terminals

pitz
the spirit of safety

- ▶ Professional diagnostics and visualisation
- ▶ Operator and graphics devices “Made in Germany”





Pilz is your solution supplier for all automation tasks. Including standard control functions. Pilz developments protect man, machine and the environment.

Pilz has a tradition as a family-run company stretching back over 60 years. Real proximity to customers is visible in all areas, instilling confidence through individual consultation, total flexibility and reliable service. Worldwide, round the clock, in 31 subsidiaries and branches, as well as 15 sales partners on every continent.

More than 1 700 staff, each one of them an ambassador for safety, make sure that your company's most valuable asset – your staff – can work safely and free from injury.



Further information:
www.pilz.com +
Webcode 0837

S
ems

ical
ergy-efficient
and environmentally-
lications

SERVICES

Consulting, engineering
and training

Economical

Count on efficient production and
the security of investment provided
by our system solutions

pilz
the spirit of safety

Automation
solutions from Pilz –
at home in every
industry.





Professional diagnostics
and visualisation.

▶ PMI® operator terminals – HMI with PMI!

Operator terminals PMI (Pilz Human Machine Interface), are used to operate and monitor your technical processes. From a simple diagnostic unit with touchscreen/key functions to an operator terminal for demanding applications, Pilz offers you a wide range of devices. This has proven itself for many years in the most varied applications, often as a complete solution with our safe automation solutions. Our compact operator terminals offer the highest level of functionality and can also be integrated into your production and automation system.



Good visualisation and diagnostics also mean shorter downtimes and therefore increased cost effectiveness. When an error occurs, diagnostics on the machinery play a special role. As a plant/machine operator you can use the PMI operator terminals in conjunction with Pilz control systems to create a system that enables rapid troubleshooting when production faults occur. As a complete solution for diagnostics the PMI operator terminals offer you the full diagnostic functionality of PVIS.










Contents

An overview of our services	6
PMI operator terminals product group	
Professional diagnostics and visualisation with PMI	8
The complete solution for diagnostics	10
Diagnostics made simple – with the diagnostic concept PVIS	12
Wide range of application options – with the diagnostic solution PVIS	14
Flexible diagnostics – PVIS OPC Tools	16
PVIS for the automation system PSS 4000	18
Technical details – PMI operator terminals	20



Made in Germany

► Business activities

COMPONENTS		
Sensor technology	<ul style="list-style-type: none"> ▶ Position monitoring devices ▶ Safety switches ▶ Safety gate systems ▶ Light beam devices ▶ Safe camera systems 	
Control technology	<ul style="list-style-type: none"> ▶ Line inspection devices ▶ Brake control devices ▶ Monitoring relays ▶ Safety relays ▶ Configurable control systems ▶ Compact programmable control systems ▶ Modular programmable control systems ▶ Decentralised periphery 	
Networks	<ul style="list-style-type: none"> ▶ Safe fieldbus systems ▶ Ethernet systems ▶ Wireless systems 	
Drive technology	<ul style="list-style-type: none"> ▶ Motion control systems ▶ Servo amplifiers ▶ Motors 	
Operator and visualisation systems	<ul style="list-style-type: none"> ▶ Control and signal devices ▶ Operator terminals 	
Software	<ul style="list-style-type: none"> ▶ Product and system tools ▶ Application software ▶ Product-independent tools 	
SYSTEMS		
Automation system PSS 4000	<ul style="list-style-type: none"> ▶ Control systems ▶ Real-time Ethernet ▶ Software platform 	
SERVICES		
Consulting and engineering	<ul style="list-style-type: none"> ▶ Risk Assessment ▶ Safety Concept ▶ Safety Design ▶ System Implementation ▶ Safety Validation ▶ CE Marking ▶ International Compliance Services ▶ Plant Assessment ▶ Inspection of ESPE 	
Training	<ul style="list-style-type: none"> ▶ Product-neutral seminars ▶ Product courses 	

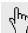
► Solution supplier for safety and standard

As market and technology leader, Pilz offers a comprehensive portfolio of products, systems and solutions for use across a range of industries. Safety or standard, plant or machine, single product or total solution – Pilz has the right answer, guaranteed. Economical, technical, personal and ecological safety are a matter of course, just as much as overall, flexible solutions.

The wide-ranging **sensor technology** portfolio provides the right sensor for each application. In conjunction with safe control technology, the result is a safe, economical, approved and complete solution.

Control technology enables numerous application options, including monitoring of electrical and functional safety, through to complete machine control: from a simple machine through to a distributed plant with a wide range of standard and safety functions.

Networks are clear and powerful due to compatible communication systems and network components. Diverse technologies enable a variety of solution approaches, including wireless, fieldbus and Ethernet systems.

 Webcode 5172

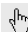
 Webcode 5213


 Webcode 5528


Drive technology ranges from drive-integrated safety functions to safe logic functions, through to connection of visualisation, sensor and actuator technology for every system environment.

Operator and visualisation systems enable short reaction times through control and signal devices, as well as rapid diagnostics via visualisation systems. As the ideal supplement for other Pilz products, your plant is completed reliably and in compliance with the standards.

Whatever the task, our **software** has the right tool. This includes application software, such as function blocks, product and system tools, as well as product-independent tools. The focus is on intuitive operation.


 Webcode 5261


 Webcode 5292

 Webcode 5435

The **automation system PSS 4000** for standard and safety is ideal for automation solutions in every industry. Interaction between the most diverse components, the software platform PAS4000 and the real-time Ethernet SafetyNET p are the system's distinguishing features.

Our **services** include consulting, technical implementation and training in the field of machinery safety. Our experts will guide you through the whole machine lifecycle, through to CE certification.

 Webcode 5092

 Webcode 7792

► Professional diagnostics and visualisation with PMI®



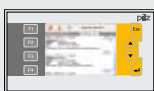
The PMI operator terminals (Pilz Human Machine Interface) offer a sophisticated diagnostics and visualisation concept that is adapted to the requirements of machinery and plants in increasingly complex production processes. Powerful 1 GHz RISC processors guarantee speedy performance even with complex applications. You have the choice between a large number of display sizes. These offer you the flexibility that you need for your projects.

Hardware

The devices are developed and manufactured in-house in Germany under the same strict quality requirements as our proven safe automation technology.

So you receive reliable, high-quality devices plus competent advice and customer care. A selection of display sizes and feature options are available, providing the flexibility you need for your work:

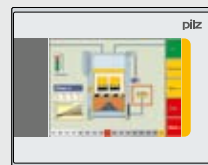
- Visualisation for compact projects – PMI 509 with 3.5" display and PMI 515 with 5.7" display
- High level of visualisation within a small area – PMI 516 with 6.5" display
- With widescreen for high resolution – PMI 518 with 7" display
- Visualisation that's easy to read – PMI 526 with 10.4" display
- The solution for large plants – PMI 531 with 12.1" display
- The solution for complex plants – PMI 538 with 15.0" display



PMI 509
(3.5"/89 mm QVGA)



PMI 515
(5.7"/147 mm QVGA)



PMI 516
(6.5"/160 mm VGA)



PMI 518
(7"/180 mm WVGA)

Maximum flexibility – the PMI operator terminals in 7 display sizes.

All units are specially designed for use in a rugged industrial environment:

- ▶ Heat-stable due to low-power RISC processor
- ▶ Insensitive to vibration due to soldered memory and processors
- ▶ Insensitive to dust due to ventilation-free technology
- ▶ Front is protected against dust and sprayed water (IP65)

Diagnostics

PMI offers all the attractive diagnostic functionalities of PVIS (see page 14). Diagnostics on PSS programmable safety and control systems, automation system PSS 4000, the safe bus system SafetyBUS p, SafetyNET p, the configurable control systems PNOZmulti and Pilz Motion Control (PMC).

Visualisation

PMI can be applied:

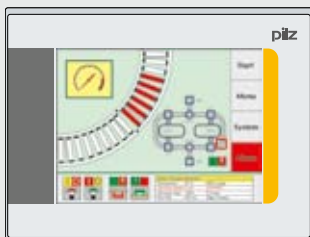
- ▶ As a flexible complete solution for the visualisation of PSS, PSS 4000, SafetyBUS p, SafetyNET p, PMC and PNOZmulti
- ▶ In combination with every common graphics software: simple configuration, implementation and application
- ▶ With any Windows® CE-compatible software, specially with numerous applications for Win CE 6 (ARM)

Your benefits at a glance

- ▶ Co-ordinated, pre-configured solution for efficient project configuration
- ▶ Intelligent, comprehensive diagnostic solution for high productivity
- ▶ Flexible application thanks to hardware and software solutions
- ▶ Complete tool for diagnostics and visualisation
- ▶ Wide range of application options due to numerous display sizes
- ▶ Better performance with RISC 1 GHz ARM processors
- ▶ Fast data transfer thanks to Ethernet interface
- ▶ Made in Germany designed, developed, built, manufactured



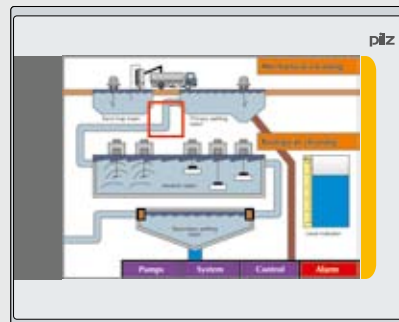
Made in Germany



PMI 526
(10.4"/260 mm SVGA)



PMI 531
(12.1"/310 mm SVGA)



PMI 538
(15"/380 mm XGA)

Keep up-to-date on operator terminals PMI:



Webcode 5306

Online information at www.pilz.com

► The complete solution for diagnostics



When you use the PMI operator terminals, you benefit from the products' high performance and from quality that was developed and manufactured in Germany. The existing expertise at Pilz means that specific adaptations are easy to make. We offer you competent advice and customer care.

Diagnostics

PMI offers all the attractive diagnostic functionalities of PVIS (see page 14).

- Diagnostics on PSS programmable safety and control systems, automation system PSS 4000, the safe bus system SafetyBUS p, SafetyNET p, the configurable control systems PNOZmulti and Pilz Motion Control (PMC)
- Simultaneous diagnostics on several PSS programmable safety and control systems, SafetyBUS p CPUs and PNOZmulti units, including a combination of these units
- Diagnostics can be displayed on multiple graphics devices
- Clear presentation and simple display-based operation

Error messages from the control systems PNOZmulti and PSS, the safe bus systems SafetyBUS p and SafetyNET p or even Motion Control PMC are shown along with practical suggestions for how to rectify the fault. As a complete solution for diagnostics the PMI operator terminals offer you the full diagnostic functionality of PVIS. As a plant operator, no programming skills are required. The PMI gives you tips on how to quickly return your machinery to operation. No need for time-consuming troubleshooting, the right solution is ready and waiting on the machine. So you save around 50 % of the time required for the fault recovery!

Keep up-to-date on operator terminals PMI:



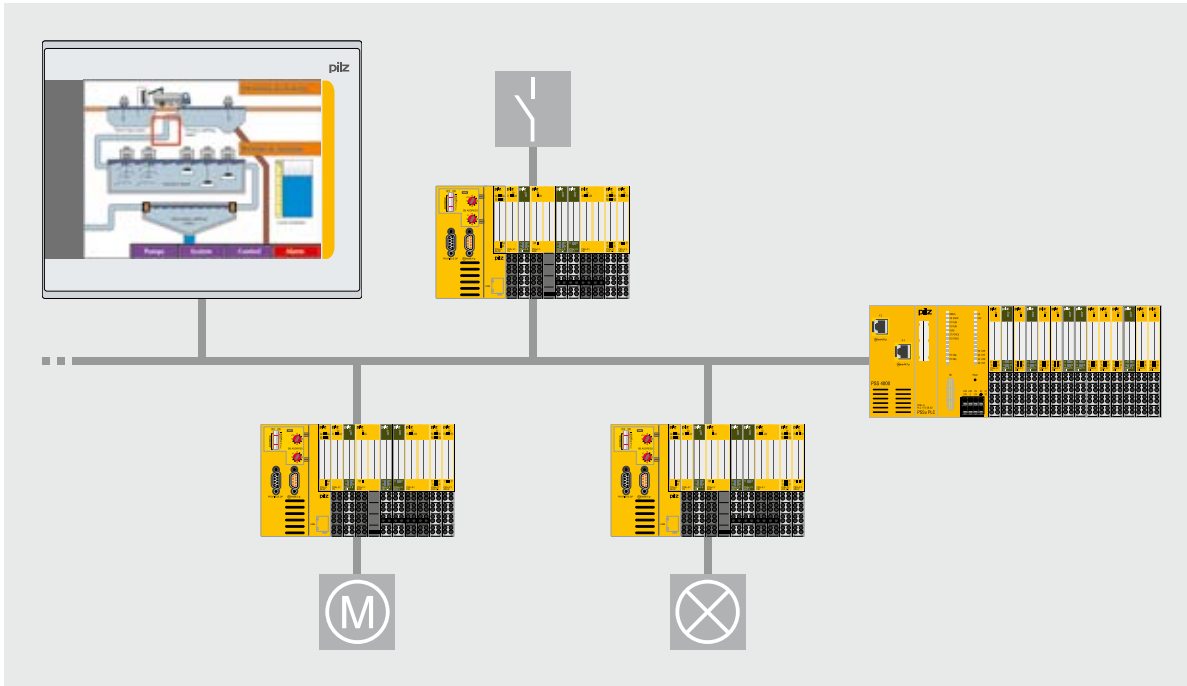
Webcode 5069

Online information at www.pilz.com



Diagnostics for the configurable control systems PNOZmulti.





Depending on the software used, PMI performs visualisation and control tasks, e.g. for the programmable control systems PSS, the automation system PSS 4000, the safe bus system SafetyBUS p and SafetyNET p.



Made in Germany

Visualisation

PMI can be applied

- ▶ As a flexible complete solution for the visualisation of PSS, PSS 4000, SafetyBUS p, SafetyNET p, Pilz Motion Control (PMC) and PNOZmulti
- ▶ In combination with every common graphics software, e.g. zenon from COPA-DATA

The PMI masters all common visualisation tasks: simple configuration, implementation and application. Thanks to the use of standardised interfaces all common makes of programmable logic controller on the market can be connected to a PMI such as control systems from Pilz, Siemens, Allen Bradley, Telemecanique, HITACHI, OMRON and Mitsubishi and many more besides

Simple software installation

The operator terminals PMI are ready for the installation of both standard graphics software and customised software. In principle, any software created for Windows® CE.net and Intel® XScale processor can be operated on PMI (SDK, System Developer Kit is included). ¹⁾

Installation has been tested for a selection of graphics software programs ²⁾:

- ▶ zenon from COPA-DATA
- ▶ Web Studio from InduSoft
- ▶ Movicon from Progea

¹⁾ Please refer to the PMI 5 operating manual for further features

²⁾ Please purchase from the software manufacturer

Keep up-to-date on operator terminals PMI:

 Webcode 0685

Online information at www.pilz.com

► Diagnostics made simple – with the diagnostic con



Plant and machinery must be productive. As efficiently and economically as possible, and without interruption. It's not until the machine suffers an unscheduled stop that you recognise the value of good, user-friendly diagnostics. A sophisticated concept developed from practice is a prerequisite. At Pilz we call it PVIS for short. It's a universal diagnostic solution for small machines to large plants.



Two recognised factors were key for development. Machine manufacturers require programming to be simple, involving minimum effort. Operators, on the other hand, need clear, unambiguous instructions to enable them to rectify faults efficiently. PVIS satisfies both sides.

Configuration features

- Diagnostic projects are created with just a few clicks, using familiar programming software (PSS WIN-PRO or PNOZmulti Configurator).
- Pre-defined plain text messages and remedy messages are available for devices and blocks. Texts can be copied, adapted or created from new.
- All pre-defined texts are stored in multiple languages.
- Diagnostic messages can be extended based on bit and word information from the control systems.

Operational features

- Clear information on the fault that has occurred: The operator is able to act quickly in the event of a fault.
- Targeted support for troubleshooting and fault recovery: This increases your ability to act in the case of a malfunction and thus your productivity. The remedy messages for the safety devices are already pre-defined and stored in the tools.
- Analysis included: For later analysis, PVIS stores every event with details of incoming and outgoing times in an "Event Log" ring memory.

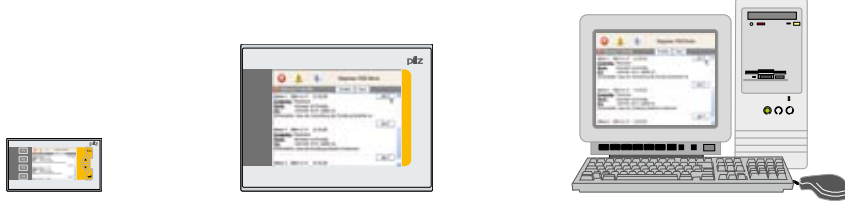
PVIS event message components

- Plain text message for the event
- Remedy messages for each event (up to eight actions)
- Text-based location information on equipment identifier, scope and responsibility
- Messages are prioritised – the triggering event is always displayed first

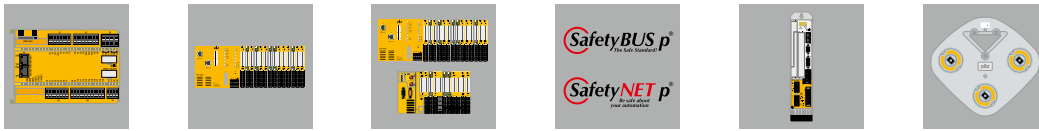
The texts are stored in the relevant project.

For further details please refer to our System Descriptions!

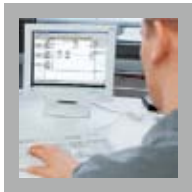
cept PVIS®



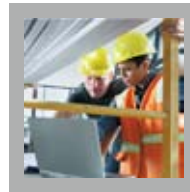
Fits perfectly into any customer topology



For control systems PNOZmulti and PSS, the automation system PSS 4000, the safe bus system SafetyBUS p and SafetyNET p, the safe camera system SafetyEYE and the servo amplifier PMCprotego D



Configuration with just a few clicks

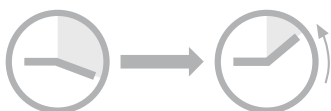


First fault detection

Graphical location information



Practical solution proposals – step-by-step



Save time during engineering



Save time during operation



Made in Germany

Keep up-to-date on the diagnostic concept PVIS:



Webcode 5069

Online information at www.pilz.com

► Wide range of application options – with the diagn

PVIS®
Professional diagnostic solution

PVIS®
Professional diagnostic solution

PVIS®
Professional diagnostic solution

Universal diagnostic concept: from a small machine to a large plant – PVIS suits every application

Variety of potential solutions: fits into any customer topology

PVIS®
Professional diagnostic solution

PVIS®
Professional diagnostic solution

PVIS®
Professional diagnostic solution

Point-to-point connection

One control system, multiple graphics devices

Multiple control systems, multiple graphics devices

Diagnostic solution PVIS®



PVIS OPC Tools – immediately ready to go

The CD "PVIS OPC Tools" is available for PVIS expanded diagnostics. The CD-ROM contains a collection of programs and components that are required for the PVS expanded diagnostics.

▶ Order numbers: 261 904

Benefits for machine operators

- ▶ Saves time and money with error messages in plain text
- ▶ Practical solution proposals help to get production restarted quickly
- ▶ Simple to operate, without any knowledge of programming
- ▶ Machine-specific diagnostic solution thanks to an intelligent concept

Benefits for machine manufacturers and system integrators

- ▶ Use familiar software: PSS WIN-PRO or PNOZmulti Configurator
- ▶ Pre-defined error messages and step-by-step remedy messages for a large number of safety devices
- ▶ Save time with simple configuration: just a few clicks in the control system's software
- ▶ Pre-defined messages in multiple languages
- ▶ Flexible concept – easy to adapt pre-defined messages and add new messages



Made in Germany

PVIS OPC Tools

Type	Features	Licences	Order number
PVIS OPC Tools	CD-ROM	-	261 904
PVIS OPC Server for PC	Point-to-point connection, one PVIS OPC Server and one Pilz control system	PtoP, runtime	261 907
	Multiple connection, e.g. one PVIS OPC Server and several control systems as well as additional diagnostic devices	Multiple, runtime	261 908

Keep up-to-date on the diagnostic concept PVIS:



Webcode 5069

Online information at www.pilz.com



► Flexible diagnostics – PVIS OPC Tools

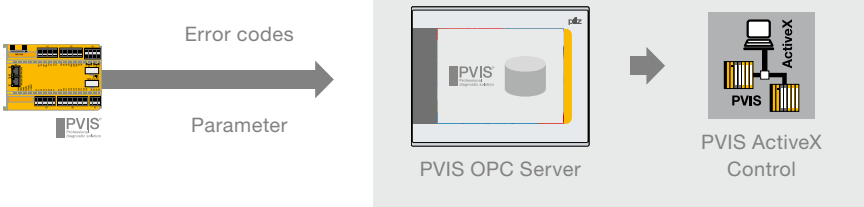
Design



Activate diagnostic texts at the click of a mouse



Operation



PVIS OPC Server and PVIS ActiveX Control for Pilz control systems

The PVIS OPC Tools consist of the PVIS OPC Server, PVIS ActiveX Control and PVIS OPC Configurator. The PVIS OPC Server supplies all the data from the connected control system based on the OPC standard such as the control systems PSS, PNOZmulti or PMC. The messages are displayed in a pre-programmed window in PVIS ActiveX Control format. The display can be incorporated directly into many graphics software packages without any additional programming or can be shown in Internet Explorer.

OPC

OPC stands for openness, productivity, collaboration. It is a standardised software interface, which enables applications from a wide variety of manufacturers to exchange data.

ActiveX Control

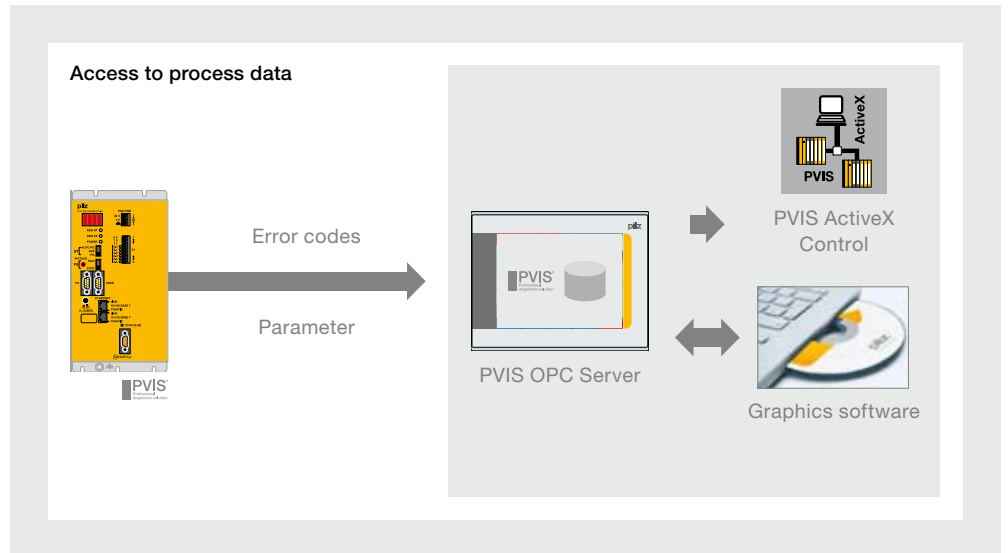
An ActiveX Control is a reusable software component, which can be developed for a variety of uses, e.g. for graphical data display.

PVIS OPC Configurator

The PVIS OPC Configurator is used to collect diagnostic data from the PSS WIN-PRO/ PNOZmulti Configurator projects. The data is then transferred from the PVIS OPC Configurator to the operator terminal PMI.

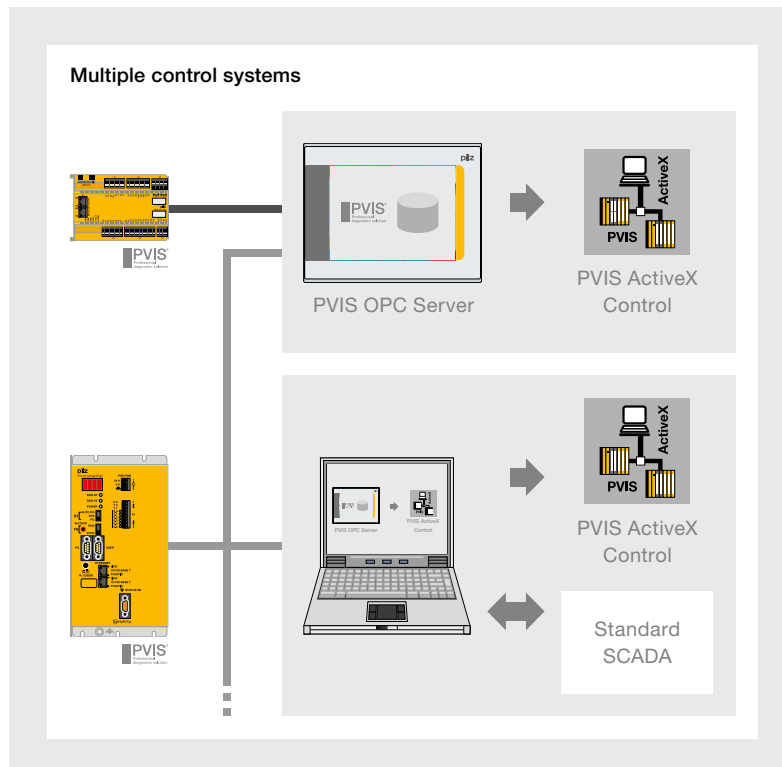
Data access to process data

In addition to its diagnostic functionality the PVIS OPC Server also provides data access to process data in the PSS. Access occurs via a standard OPC Client and is naturally read/write.



PVIS diagnostics and visualisation of multiple control systems

With PVIS OPC Tools it is possible to diagnose several control systems simultaneously – including a combination of PSS and PNOZmulti. The messages can be displayed using several diagnostic devices. Several PVIS ActiveX Controls can access one PVIS OPC Server in the process. Diagnostic devices may be devices from the PMI product range or standard PCs/industrial computers.



Made in Germany

Keep up-to-date on PVIS OPC Tools:



Webcode 5073

Online information at www.pilz.com

▶ PVIS® for the automation system PSS 4000

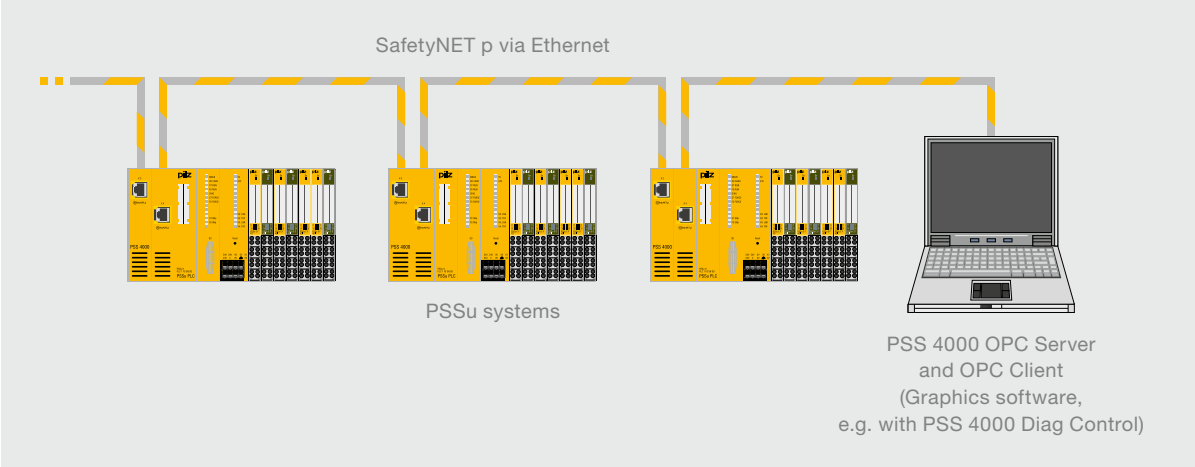


In the automation system PSS 4000 a PC or an operator terminal PMI obtains the system section OPC Server by installing the PSS 4000 firmware. With the installation of the PSS 4000 firmware, a PC becomes a PSS 4000-operable device from a third-party manufacturer and an operator terminal PMI becomes a PSS 4000-operable device from Pilz.

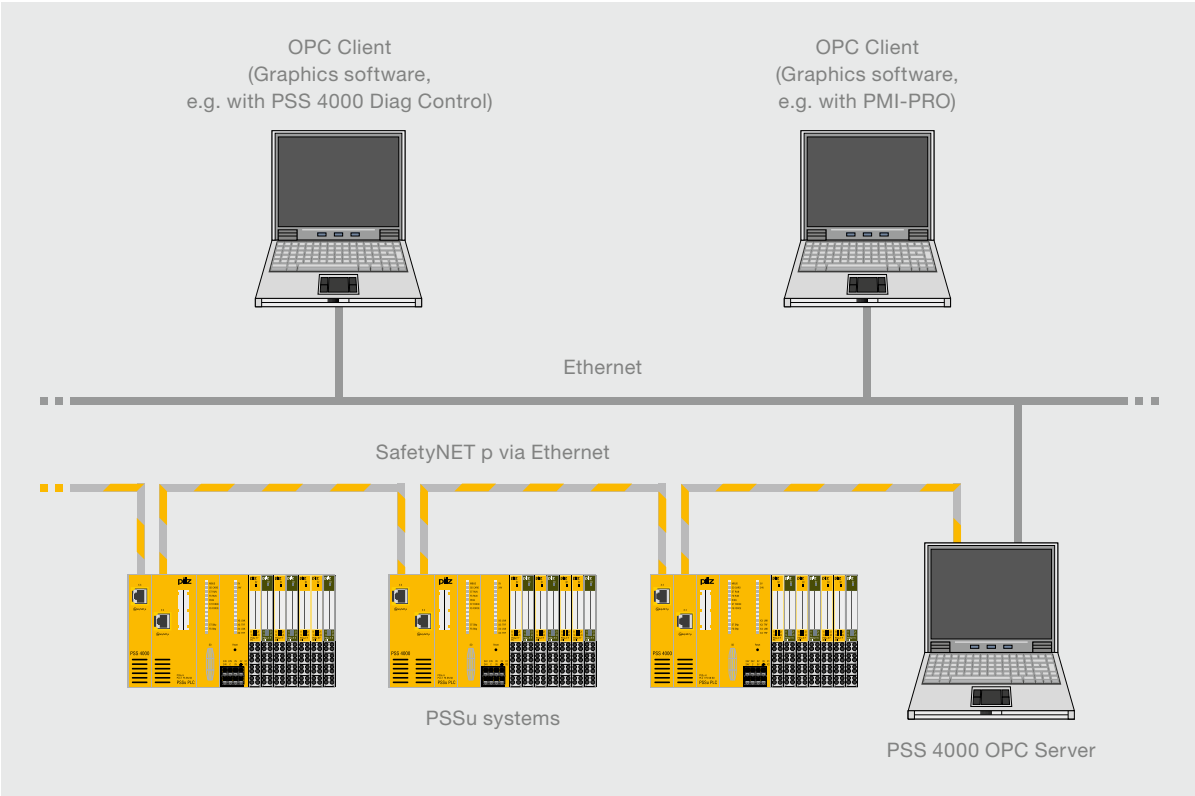
The following boundary conditions are valid for the OPC Server:

- ▶ The OPC Server supports different OPC features for access from OPC Clients
- ▶ The OPC Server can be installed on a PC or an operator terminal PMI from Pilz
- ▶ An OPC Server can precisely collect the data from a project that was created with PAS4000 and provide this to the OPC Clients
- ▶ In every project that is created with PAS4000, there can be exactly one OPC Server
- ▶ It is possible to access the OPC Server with more than one Client
- ▶ All project-related settings for the OPC Server are made in PAS4000 and transferred to the OPC Server when downloading the project as an OPC device project





In a minimum configuration, the OPC Server will be on the same PC as the OPC Client with the graphics software.



Networking of OPC Server and OPC Clients via Ethernet.



Made in Germany

Keep up-to-date on PVIS OPC Tools:



Webcode 5069

Online information at www.pilz.com

► Technical details – PMI®



Operator terminals PMI



PMI 509



PMI 515



PMI 516



PMI 518



PMI 526



PMI 531



PMI 538

Type	Display diagonal	Resolution in pixels	Power consumption
PMI 509	3.5"/89 mm	320 x 240 QVGA	2.5 W
PMI 515	5.7"/147 mm	320 x 240 QVGA	3.3 W
PMI 516	6.5"/160 mm	640 x 480 VGA	6.5 W
PMI 518	7"/180 mm widescreen	800 x 480 WVGA	5.8 W
PMI 526	10.4"/260 mm	800 x 600 SVGA	6.3 W
PMI 531	12.1"/310 mm	800 x 600 SVGA	8.9 W
PMI 538	15"/380 mm	1024 x 768 pixels XGA	11.0 W

Common features

- ▶ Display: Graphic colour TFT, 65536 colours, LED backlight
- ▶ Mobile memory: USB stick, SD card
- ▶ Processor: RISC 1 GHz, ARM, heat-stable due to low power
- ▶ Memory: 256 MByte RAM, 512 MByte Flash
- ▶ Operating system: Windows CE 6 Professional
- ▶ Character set: Unicode
- ▶ Supply voltage: 24 VDC
- ▶ Protection type: IP65 front is protected against dust and sprayed water, back IP20
- ▶ Real-time clock: Battery-buffered real-time clock
- ▶ Environment:
 - Operating temperature: 0 ... 50 °C
 - Storage: -25 ... +60 °C
 - Climatic suitability: Max. 93 % r.h. at +40 °C
- ▶ Graphics software (please order licence separately): PVIS OPC Tools
- ▶ User-specific applications and various visualisation software packages can be installed
- ▶ Certification: CE, UL/cUL¹⁾

PVIS OPC Tools

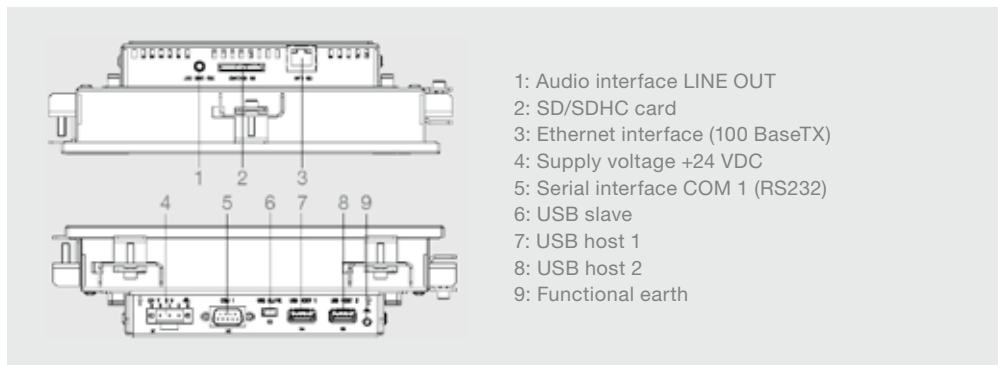


Type	Features	Licences	Order number
PVIS OPC Tools	CD-ROM	-	261 904
PVIS OPC Server for PMI	Point-to-point connection, one PVIS OPC Server and one display unit	PtoP, runtime	261 905
	Eightfold connection, e.g. one PVIS OPC Server and seven display units	8con, runtime	261 906
zenon Operator	Editor for projects up to 1024 tags	zenon Operator Dev 1024	265 010
	Runtime Windows CE for PMI projects up to 1024 tags	zenon Operator RT PMI	265 210

Dimensions incl. front panel (H x W x D) in mm:	Operation	Interfaces	Order number
87 x 157 x 40	Keys/touchscreen	1 x Ethernet, 1 x RS232, 1 x USB host, 1 x USB slave, 1 x Audio Out	264 509
144 x 170 x 40	Analogue resistive touchscreen	1 x Ethernet, 1 x RS232, 1 x USB host, 1 x USB slave, 1 x Audio Out	264 515
165 x 212 x 62.5	Analogue resistive touchscreen	1 x Ethernet, 1 x RS232, 2 x USB host, 1 x USB slave, 1 x Audio Out	264 516
160 x 232 x 62.5	Analogue resistive touchscreen	1 x Ethernet, 1 x RS232, 2 x USB host, 1 x USB slave, 1 x Audio Out	264 518
243 x 317 x 62.5	Analogue resistive touchscreen	1 x Ethernet, 1 x RS232, 2 x USB host, 1 x USB slave, 1 x Audio Out	264 526
276 x 352 x 63.3	Analogue resistive touchscreen	1 x Ethernet, 1 x RS232, 2 x USB host, 1 x USB slave, 1 x Audio Out	264 531
332 x 412 x 63.3	Analogue resistive touchscreen	1 x Ethernet, 1 x RS232, 2 x USB host, 1 x USB slave, 1 x Audio Out	264 538



¹⁾ for PMI 509 and PMI 515. Pending for the other display sizes.



- 1: Audio interface LINE OUT
- 2: SD/SDHC card
- 3: Ethernet interface (100 BaseTX)
- 4: Supply voltage +24 VDC
- 5: Serial interface COM 1 (RS232)
- 6: USB slave
- 7: USB host 1
- 8: USB host 2
- 9: Functional earth



Made in Germany

Side view: PMI 516/PMI 518/PMI 526/PMI 531/PMI 538.

Keep up-to-date on: PMI operator terminals

[Webcode 5582](#)

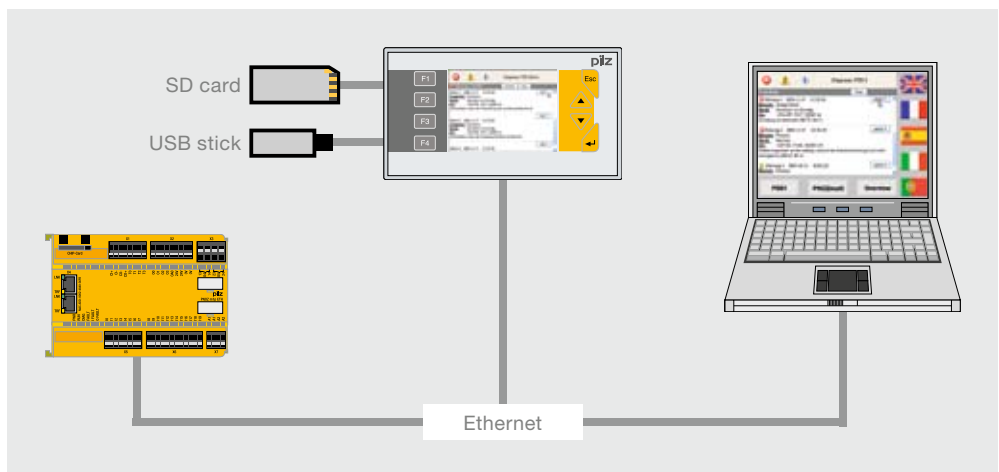
PMI accessories

[Webcode 6340](#)

Download

[Webcode 0685](#)

Online information at www.pilz.com



Connection example for configurable control system PNOZmulti and PMI 509.

Contact

AT

Pilz Ges.m.b.H.
Sichere Automation
Modecenterstraße 14
1030 Wien
Austria
Telephone: +43 1 7986263-0
Telefax: +43 1 7986264
E-Mail: pilz@pilz.at
Internet: www.pilz.at

AU

Pilz Australia
Safe Automation
Unit D7, Hallmarc Business park Clayton
Corner of Westall and Centre roads
Clayton, Melbourne, Victoria 3168
Australia
Telephone: +61 3 95446300
Telefax: +61 3 95446311
E-Mail: safety@pilz.com.au
Internet: www.pilz.com.au

BE, LU

Pilz Belgium
Safe Automation
Bijenstraat 4
9051 Gent (Sint-Denijs-Westrem)
Belgium
Telephone: +32 9 3217570
Telefax: +32 9 3217571
E-Mail: info@pilz.be
Internet: www.pilz.be

BR

Pilz do Brasil
Automação Segura
Av. Senador Vergueiro,
347/355 -Jd. do Mar
CEP: 09750-000
São Bernardo do Campo - SP
Brazil
Telephone: +55 11 4126-7290
Telefax: +55 11 4942-7002
E-Mail: pilz@pilz.com.br
Internet: www.pilz.com.br

CA

Pilz Automation Safety Canada, LP
250 Bayview Dr. Unit 5
Barrie ON L4N 4Y8
Canada
Telephone: +1 705 481-7459
Telefax: +1 705 481-7469
E-Mail: info@pilz.ca
Internet: www.pilz.ca

CH

Pilz Industrieelektronik GmbH
Gewerbepark Hintermättli
5506 Mägenwil
Switzerland
Telephone: +41 62 88979-30
Telefax: +41 62 88979-40
E-Mail: pilz@pilz.ch
Internet: www.pilz.ch

CN

Pilz Industrial Automation
Trading (Shanghai) Co., Ltd.
Rm. 1702-1704
Yongda International Tower
No. 2277 Long Yang Road
Shanghai 201204
China
Telephone: +86 21 60880878
Telefax: +86 21 60880870
E-Mail: sales@pilz.com.cn
Internet: www.pilz.com.cn

CZ, SK

Pilz Czech s.r.o
Safe Automation
Zelený pruh 1560/99
140 00 Praha 4
Czech Republic
Telephone: +420 222 135353
Telefax: +420 296 374788
E-Mail: info@pilz.cz
Internet: www.pilz.cz

DE

Pilz GmbH & Co. KG
Felix-Wankel-Straße 2
73760 Ostfildern
Germany
Telephone: +49 711 3409-0
Telefax: +49 711 3409-133
E-Mail: info@pilz.de
Internet: www.pilz.de

DK

Pilz Skandinavien K/S
Safe Automation
Ellegaardvej 25 L
6400 Sønderborg
Denmark
Telephone: +45 74436332
Telefax: +45 74436342
E-Mail: pilz@pilz.dk
Internet: www.pilz.dk

ES

Pilz Industrieelektronik S.L.
Safe Automation
Camí Ral, 130
Polígono Industrial Palou Nord
08401 Granollers
Spain
Telephone: +34 938497433
Telefax: +34 938497544
E-Mail: pilz@pilz.es
Internet: www.pilz.es

FI

Pilz Skandinavien K/S
Safe Automation
Nuijamiestentie 7
00400 Helsinki
Finland
Telephone: +358 10 3224030
Telefax: +358 9 27093709
E-Mail: pilz.fi@pilz.dk
Internet: www.pilz.fi

FR

Pilz France Electronic
1, rue Jacob Mayer
CS 80012
67037 Strasbourg Cedex 2
France
Telephone: +33 3 88104000
Telefax: +33 3 88108000
E-Mail: siege@pilz-france.fr
Internet: www.pilz.fr

GB

Pilz Automation Ltd
Pilz House
Little Colliers Field
Corby, Northants
NN18 8TJ
United Kingdom
Telephone: +44 1536 460766
Telefax: +44 1536 460866
E-Mail: sales@pilz.co.uk
Internet: www.pilz.co.uk

IE

Pilz Ireland Industrial Automation
Cork Business and Technology Park
Model Farm Road
Cork
Ireland
Telephone: +353 21 4346535
Telefax: +353 21 4804994
E-Mail: sales@pilz.ie
Internet: www.pilz.ie

In many countries we are represented by sales partners. Please refer to our homepage www.pilz.com for further details or contact our headquarters.

Contact

IN

Pilz India Pvt Ltd.
Office No 202, Delite Square
Near Aranyeshwar Temple
Sahakar Nagar No 1
Pune 411009
India
Telephone: +91 20 2421399-4/-5
Telefax: +91 20 2421399-6
E-Mail: info@pilz.in
Internet: www.pilz.in

IT

Pilz Italia S.r.l.
Automazione sicura
Via Gran Sasso n. 1
20823 Lentate sul Seveso (MB)
Italy
Telephone: +39 0362 1826711
Telefax: +39 0362 1826755
E-Mail: info@pilz.it
Internet: www.pilz.it

JP

Pilz Japan Co., Ltd.
Safe Automation
Ichigo Shin-Yokohama Bldg. 4F
3-17-5 Shin-Yokohama
Kohoku-ku
222-0033 Yokohama
Japan
Telephone: +81 45 471-2281
Telefax: +81 45 471-2283
E-Mail: pilz@pilz.co.jp
Internet: www.pilz.jp

KR

Pilz Korea Ltd.
Safe Automation
22F Keumkang
Pentierum IT Tower Unit B
810 Gwanyang-dong, Dongan-gu
Anyang-si, Gyeonggi-do, 431-060
South Korea
Telephone: +82 31 450 0677
Telefax: +82 31 450 0670
E-Mail: info@pilzkorea.co.kr
Internet: www.pilz.co.kr

MX

Pilz de México, S. de R.L. de C.V.
Automatización Segura
Convento de Actopan 36
Jardines de Santa Mónica
Tlalnepantla, Méx. 54050
Mexico
Telephone: +52 55 5572 1300
Telefax: +52 55 5572 1300
E-Mail: info@pilz.com.mx
Internet: www.pilz.mx

NL

Pilz Nederland
Veilige automatisering
Havenweg 22
4131 NM Vianen
Netherlands
Telephone: +31 347 320477
Telefax: +31 347 320485
E-Mail: info@pilz.nl
Internet: www.pilz.nl

NZ

Pilz New Zealand
Safe Automation
Unit 4, 12 Laidlaw Way
East Tamaki
Auckland 2016
New Zealand
Telephone: +64 9 6345350
Telefax: +64 9 6345352
E-Mail: office@pilz.co.nz
Internet: www.pilz.co.nz

PL

Pilz Polska Sp. z o.o.
Safe Automation
ul. Ruchliwa 15
02-182 Warszawa
Poland
Telephone: +48 22 8847100
Telefax: +48 22 8847109
E-Mail: info@pilz.pl
Internet: www.pilz.pl

PT

Pilz Industrieelektronik S.L.
R. Eng Duarte Pacheco, 120
4 Andar Sala 21
4470-174 Maia
Portugal
Telephone: +351 229407594
Telefax: +351 229407595
E-Mail: pilz@pilz.pt
Internet: www.pilz.pt

RU

Pilz RUS OOO
Ugreshskaya street, 2,
bldg. 11, office 16 (1st floor)
115088 Moskau
Russian Federation
Telephone: +7 495 665 4993
E-Mail: pilz@pilzrussia.ru
Internet: www.pilzrussia.ru

SE

Pilz Skandinavien K/S
Safe Automation
Energigatan 10 B
43437 Kungsbacka
Sweden
Telephone: +46 300 13990
Telefax: +46 300 30740
E-Mail: pilz.se@pilz.dk
Internet: www.pilz.se

TR

Pilz Emniyet Otomasyon
Ürünleri ve Hizmetleri Tic. Ltd. Şti.
Kayışdağı Cd. Beykonağı Plaza
No:130 K:2 D:2
Ataşehir/İstanbul
Turkey
Telephone: +90 216 5775550
Telefax: +90 216 5775549
E-Mail: info@pilz.com.tr
Internet: www.pilz.com.tr

TW

Pilz Taiwan Ltd.
7F.-3, No. 146, Songjiang Rd.
Zhongshan Dist., Taipei City
104, Taiwan
Telephone: +886 2 2568 1680
Telefax: +886 2 2568 1600
E-Mail: info@pilz.tw
Internet: www.pilz.tw

US

Pilz Automation Safety L.P.
7150 Commerce Boulevard
Canton
Michigan 48187
USA
Telephone: +1 734 354 0272
Telefax: +1 734 354 3355
E-Mail: info@pilzusa.com
Internet: www.pilz.us

In many countries we are represented by sales partners. Please refer to our homepage www.pilz.com for further details or contact our headquarters.

► Support

Technical support is available from Pilz round the clock.

Americas

Brazil
+55 11 97569-2804

Mexico
+52 55 5572 1300

USA (toll-free)
+1 877-PILZUSA (745-9872)

Asia

China
+86 21 60880878-216

Japan
+81 45 471-2281

South Korea
+82 31 450 0680

Australia

+61 3 95446300

Europe

Austria
+43 1 7986263-0

Belgium, Luxembourg
+32 9 3217575

France
+33 3 88104000

Germany
+49 711 3409-444

Ireland
+353 21 4804983

Italy
+39 0362 1826711

Scandinavia

+45 74436332

Spain

+34 938497433

Switzerland

+41 62 88979-30

The Netherlands

+31 347 320477

Turkey

+90 216 5775552

United Kingdom

+44 1536 462203

You can reach our international hotline on:

+49 711 3409-444
support@pilz.com

Pilz develops environmentally-friendly products using ecological materials and energy-saving technologies. Offices and production facilities are ecologically designed, environmentally-aware and energy-saving. So Pilz offers sustainability, plus the security of using energy-efficient products and environmentally-friendly solutions.



Presented by:



Pilz GmbH & Co. KG
Felix-Wankel-Straße 2
73760 Ostfildern, Germany
Tel.: +49 711 3409-0
Fax: +49 711 3409-133
info@pilz.com
www.pilz.com

