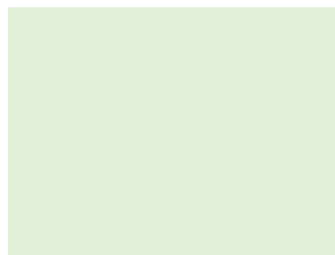
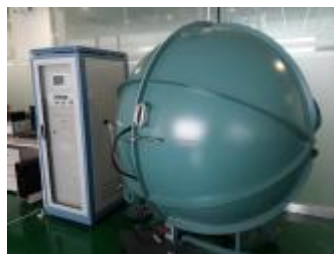
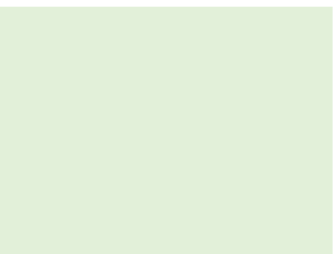
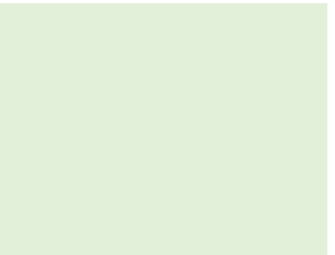
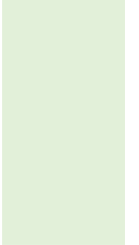


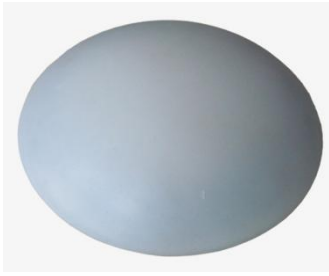


佛山凯力照明科技有限公司

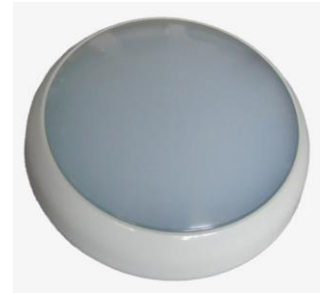
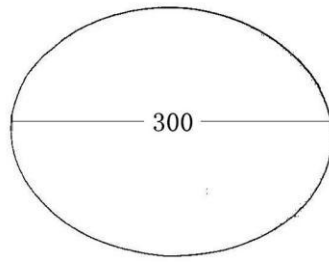
Foshan Kaili Lighting Technology Co., Ltd



Integrated general lighting with emergency backup LED ceiling light



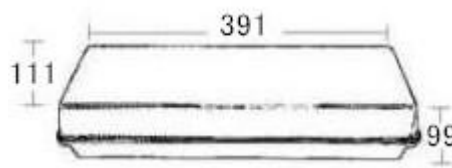
XD0001



XD0002



XD0004



XD0003

Integrated general lighting with emergency backup LED ceiling light can be used in commercial application for everyday normal lighting and used for emergency lighting when losing main AC power 2hrs or 3hrs according to demands.

Technical Data:

- General lighting output 1200lumens
- Emergency light backup 360lumens
- IP65 Rating, Wet location, energy efficient
- Main Voltage/Frequency: AC220V(+/-10%)/50-60Hz
- Source Power: LED lamp 15W
- Color Temperature: 4000K/6000K
- Battery Capacity & Voltage: Ni-Cd 6V; 2500mAh
- Discharge duration: 2 hours
- Emergency Conversion kit: built-in type
- CRI: ≥ 80 Ra

Water-proof/IP Rating/Discharge time/Battery/Auto-test/sensor function etc. on request.



Specifications:

Code	XD0001	XD0002	XD0003	XD0004
Name	Integrated Lighting + Emergency light	Water-proof Integrated Lighting+Emergency light		
Dimension				
Specification	Ø300	320*320*100	391*111*99	
Material				
PC+UV				
Parameter				
Main Voltage/Frequency	AC 220V(+/-10%)/50-60Hz			
System Mode	Non-maintained Type			
Battery Capacity & Voltage	Ni-Cd 6v 2500mAh			
Battery	Sealed Nickel Cadmium (NI-Cd battery pack)			
Luminous Efficacy	>80 lm/w			
CRI	≥80Ra			
Power	15W			
Color Temperature	4000K/6000K			
Luminous Flux (Normal Lighting)	1200lm			
Luminous Flux(Emergency)	360lm			
IP Rating	/	IP61	IP65	
Operating Temperature	-10°C-45°C			
Surface Temperature	40°C			
Emergency Conversion Kit	Built-in type			
Lifespan	35,000 hours			
Discharge Duration	2 hours			
Charging Time	24 hours			
Emergency Starting Time	<0.3s			
Specific Function	N	Waterproof		
Low Voltage Protection	Electronic Protection(approx.1V/cell)			
Guarantee Period	1 year			

LED down light with emergency kit built-in function



- General lighting output 700lumens
- Emergency light backup 350lumens
- Emergency Conversion kit: built-in type

Down light can be widely used in the shopping mall, hotel, office building and many high-end public place for its outstanding performance of compact size, flexible lighting and easy installation around the range of luminaiares. Emergency lighting is essential in the public places. If we can make normal lighting and emergency combined on the down light, which became LED integrated normal lighting down light with emergency lighting back-up. When losing main AC power, the emergency function can operate easily. The normal lighting output of 10 Watts LED down light is 700lumens with about 48 °C working temperature. When losing main AC power, our integrated functional down light can be working 5 Watts, almost 50% emergency output lumens, which is enough for fire egress demand.

Technical Data:

- Main Voltage/Frequency: AC220V(+/-10%)/50-60Hz
 - Source Power: LED 10W
 - Color Temperature: 4000K
 - Battery Capacity & Voltage: Ni-Cd/Ni-MH 6v; 1800mAh
 - Discharge duration: 2 hours
 - CRI: $\geq 80Ra$
 - Material: Aluminum+PC+ABS
- Dimensions: Diameter: 4.5inch (118mm), Cut out: 130mm



Specifications:

Code	TDYJ001
Name	Integrated Lighting+Emergency downlight
Dimension	
Cut out size	130mm
Diameter	118mm
Material	
Aluminum+PC+ABS	
Parameter	
Main Voltage/Frequency	AC100-240V/50-60Hz
Battery Capacity & Voltage	Ni-Cd/Ni-MH 6v; 1800mAh
Power Factor	>0.9
Power	10W
Color Temperature	4000K
CRI	≥80Ra
Operating Temperature	≅60°C
Luminous Flux (Normal Lighting)	700lm
Luminous Flux (Emergency)	350lm
Lifespan	35,000 hours
Discharge Duration	2 hours
Charging Time	24 hours
Emergency Starting Time	<0.3s
Low Voltage Protection	Electronic Protection(approx.1V/cell)
Guarantee Period	1 year

Remarks: Water-proof/IP Rating/Discharge time/Battery/Auto-test/sensor function etc. on request.



LED Emergency Lighting Technology

Phone: +86-81857338 Web: www.ledemergencylamp.com

Address: Nanhai, Foshan, China Email: ph137@163.com