
SLB Series SHACKLES Load Pin

FEATURES

- Monitors traction force and other force measurement
- Available in 7 standard ranges between 25 kN and 200 kN
- Stainless steel construction
- Special execution for harsh environmental conditions (IP66)
- High reliability for strict safety requirements
- Simple installation for cost-saving solutions to measurement problems

DESCRIPTION

The Magtrol Shackles Load Pin can be used in all applications where a load measuring survey is necessary.

The load pin included on the shackle provides a proportional electrical signal according to the applied load.

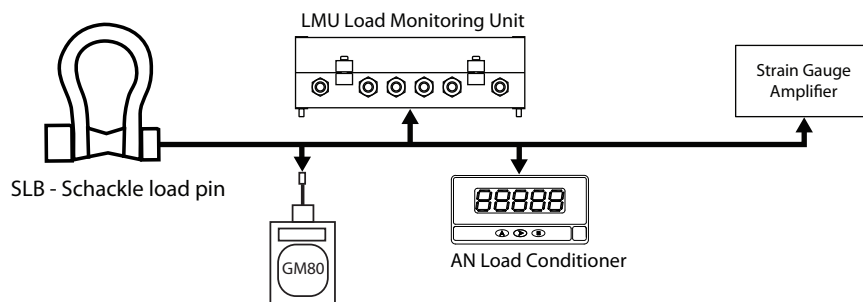
The transducer is constructed with high resistance stainless steel and is insensitive to external mechanical, chemical or marine effects making them ideal for use in harsh environmental conditions.



APPLICATIONS

The SLB is designed for hoisting in several applications like cranes winches, lifting, and other marine applications. In combination with a Magtrol portable GM 80 or LMU (Load Monitoring Unit), the SLB is the most reliable and simplest method to control your load application.

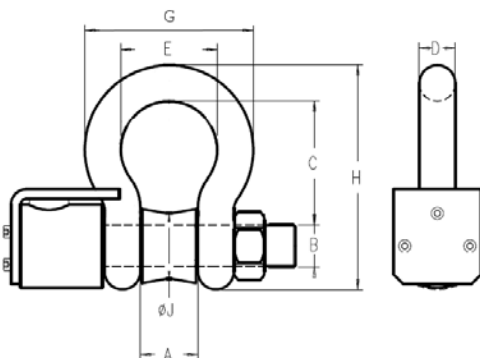
SYSTEM CONFIGURATION



TECHNICAL RATINGS

Type	SLB 266	SLB 267	SLB 268	SLB 270	SLB 271	SLB 272	SLB 273
Size (inches)	7/8	1	1 1/8	1 3/8	1 1/2	1 3/4	2
MECHANICAL CHARACTERISTICS							
Nominal Load	25 kN	40 kN	50 kN	65 kN	80 kN	120 kN	200 kN
Admissible Overload	150% of rated load						
Protection Class	IP 66 according to DIN 40050						
Weight (kg)	3.5	4.5	6	10	14	21	31
Material	stainless steel 1.4057						
ELECTRICAL CHARACTERISTICS							
Transducer Sensitivities	0.5 %	1%					
Bridge Impedance	350 Ω						
Power Supply	5 - 10 V						
Combined Error (Non-linearity + Hysteresis)	1 to 2%						
ENVIRONMENTAL CHARACTERISTICS							
Operating Temperature	-25°C to +80°C						
Storage Temperature	-55°C to +125°C						
Temperature Influence: On Zero	± 0.02 %/K						
Temperature Influence: On Sensitivity	± 0.02 %/K						
CONNECTION							
Cable type	K-414						
Output Connector	Radial, MS 3112 E 10-6P						
Connection cable Assembly	3 m, 6 m, 12 m ou 20 m long cable with straight connector (MS 3116 J10 6S) or angled 90° (Souriau 851 08 EC 10 6S50)						
Influence on Measurement Signal (Shift of Force Angle with Respect to Measurement Axis)	According to the cosine function						

DIMENSIONS



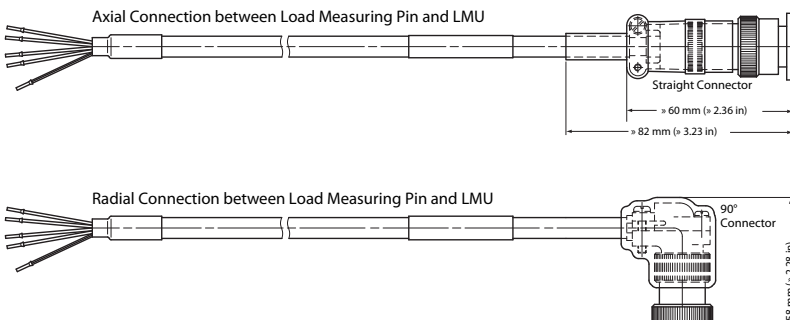
Size (inch.)		Dimensions (mm)							
		A	ØB	C	D	E	G	H	ØJ
7/8"	25 kN	36	25	84	22	58	102	148	35.5
1"	40 kN	43	29	95	25	68	119	167	37
1 1/8"	50 kN	46	32	108	29	74	131	190	40
1 3/8"	65 kN	57	38	133	35	92	162	233	50
1 1/2"	80 kN	60	42	146	38	99	175	254	54
1 3/4"	120 kN	73	51	178	45	127	225	313	65
2"	200 kN	83	57	197	51	146	253	348	72

OPTIONS AND ORDERING INFORMATION

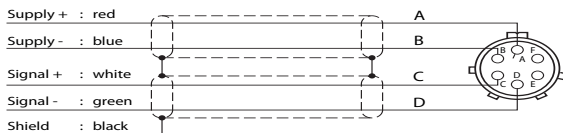
STANDARD VERSIONS			SL <input type="checkbox"/> / 01X
Size 7/8"	25 kN	<input type="checkbox"/> 266	
Size 1"	40 kN	<input type="checkbox"/> 267	
Size 1 1/8"	50 kN	<input type="checkbox"/> 268	
Size 1 3/8"	65 kN	<input type="checkbox"/> 270	
Size 1 1/2"	80 kN	<input type="checkbox"/> 271	
Size 1 3/4"	120 kN	<input type="checkbox"/> 272	
Size 2"	200 kN	<input type="checkbox"/> 273	

ACCESSORIES

Cable Assemblies



Pin Configuration



Accessory Ordering Information

COUNTER-CONNECTOR

Straight Connector P/N 957.11.08.0030
 90° Connector P/N 957.11.08.0029

CONNECTION CABLE ASSEMBLY

Part Number EH 13 / 0 1

- Straight Connector _____ 8
- 90° Connector _____ 9

CONNECTION CABLE ASSEMBLY

Cable Length: 3 m _____ 1
 6 m _____ 2
 12 m _____ 3
 20 m _____ 4

Due to the continual development of our products, we reserve the right to modify specifications without forewarning.



MAGTROL SA
 Route de Montena 77
 1728 Rossens/Fribourg,
 Switzerland
 Tel: +41 (0)26 407 3000
 Fax: +41 (0)26 407 3001

MAGTROL INC
 70 Gardenville Parkway
 Buffalo, New York 14224 USA
 Tel: +1 716 668 5555
 Fax: +1 716 668 8705
 E-mail: magtrol@magtrol.com

www.magtrol.com

Subsidiaries in:
 Germany • France
 China • India
 Worldwide Network
 of Sales Agents

