



AUTOSAFE 835 AUTOTRONIC 836

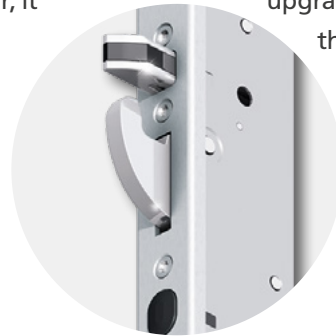
The automatic locking systems for increased security

The next generation of automatic locking systems.



The new series of multipoint locking systems **autosafe 835** and **autotronic 836** are based on the proven concept of the automatic locking **autosafe** product family. The result: increased door security with smarter operating comfort. Designed for use in the private and public sector, it allows a wide variety of applications. Even the mechanical design scores with optional

possibilities for extension. In addition, the motorised variant offers increased comfort and integration into home automation. Emergency exit door designs are also available – even for fully motorised and automatically opening double-leaf full panic doors. Additional upgrade options are guaranteed through the retrofittable motor drive and all FUHR radio access control systems.



Your benefits:

- ✓ Novel combination of bolts for reliable locking process
- ✓ Robust latching bolts for optimum locking sequence and tightness
- ✓ Even more security due to sturdy hook bolts
- ✓ High locking process reliability thanks to the unique, process-controlled **DuoSecure** technology
- ✓ Convenient opening with two-step opening process
- ✓ Proven tamper-proof and dirt-resistant magnetic release
- ✓ Full product range for every requirement: standard, motorised and panic locks (1- and 2-leaf)
- ✓ Flexibility on request by retrofittable or pre-assembled motor drive
- ✓ Suitable for use with existing system solutions – same cut-outs, same frame components



Security

The new multipoint locking systems **autosafe 835** and **autotronic 836** with their type 10 latching bolt/hook bolt combination ensure the greatest possible security when locking the door. The door locks automatically and reliably at several points thanks to the new **DuoSecure** technology.

Due to the existing design, the automatic multipoint locking systems are suitable for system tests for burglar resistance according to EN 1627 to RC 4.

Comfort

The automatic function eliminates the cumbersome locking process because it secures the door with every closing. This also puts an end to discussions about ensuring the front door of the apartment building is locked at night. The motorised opening function is equally comfortable and, with the **autotronic 836**, is also possible for instance via the home intercom system.

Even barrier-free solutions in accordance with DIN 18040 can be implemented without difficulty, for example due to a low handle height of 850 mm or the integration of an electric swing door drive.

Energy

Thanks to the constantly effective multipoint locking system, door warping is permanently prevented, thus ensuring constant tightness. This means that the heat stays in the house, conditioned air does not escape, and outside noise is excluded. A comfortable living environment and lower energy costs are the consequences.

Therefore, the automatic locking system also offers the best conditions for success in the tightness tests with regard to wind, water and air – without re-locking.

Security – tested and certified several times.

Reliable door security

- Automatically closed – without the need to lock up
- The door is always multipoint locked
- Robust hook bolts ensure reliable security by gripping into the strike plates
- Stable latching bolts provide contact pressure and tightness
- In addition to the hook bolts, the latching bolts serve as further locking elements and as anti-lift-out protection for even more comprehensive security against breakage through force
- The latching and hook bolts automatically extend to 20 mm and are secured against being pushed back
- The latching bolts have a counter-pressure device in two positions thanks to **DuoSecure** technology
- The key can also be used to block the lever and extend the main deadbolt – ideal to prevent children from leaving the house unnoticed, or for the control of other functions by means of a deadbolt switching contact



Demonstrably secure, the new type 10

- Suitable for system tests according to EN 1627 up to RC 4
- Certified according to SKG, 2/3 stars
- Technical requirements for multipoint locking systems according to DIN 18251-3, class 5
- Tested according to prEN 15685
- VdS approval, class C
- Meets the requirements of the product standards for the CE marking of doors according to EN 14351-1
- Particularly suitable for achieving high classes of tightness tests according to EN 12207, EN 12211, EN 1027
- Suitable for fire-resistant doors according to EN 1634
- Tested according to EN 14846 for electromechanical locks
- Certified according to EN 179 for emergency exit doors
- Certified according to EN 1125 for panic doors



Our type 10 – we have made the locking system more intelligent.

DuoSecure – increased security

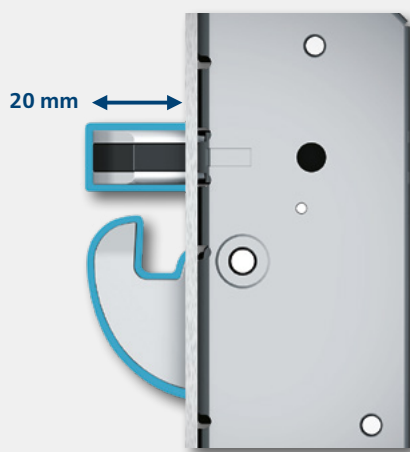
The special combination of automatic latching and hook bolts works with the new DuoSecure mechanism and combines the benefits of proven technology and increased security. The two-step release of latching and hook bolts allows, among other things, improved locking performance in demanding thermal conditions or critical installation situations.

The special DuoSecure effect:
Where standard automatic locking systems reach their limits, autosafe 835 and autotronic 836 with type 10 locking system can lock safely and reliably.

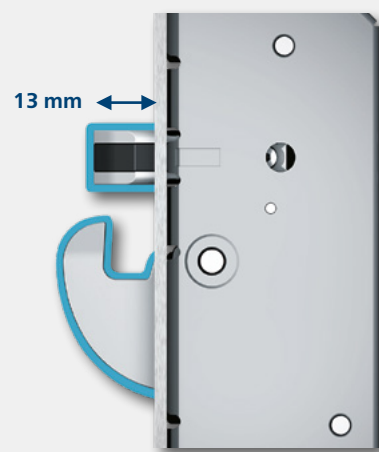
DuoSecure – visibly secure



The automatic latching bolt ensures tightness and keeps the door in place.



The latching and hook bolts automatically extend to 20 mm and are secured against being pushed back.



Contrary to conventional automatic locks, the hook bolt locks even if the latching bolt can extend only to 13 mm. Even in this position, the latching and hook bolts are prevented from being pushed back.

Your benefits with DuoSecure:

- ✓ Doubly secure due to automatic latching and hook bolts
- ✓ Particularly effective protection thanks to the stable hook bolt
- ✓ Secured against being pushed back in a number of ways
- ✓ Reliable locking with unique DuoSecure technology



Robust release principle

High-quality, low-wear and dirt-resistant magnets ensure long-lasting automatic locking. The latching and hook bolts, which are tamper-proof and process-controlled by magnetic technology, will only extend when the door closes.

Reliable DuoSecure locking. Intelligent details, combined with precision.

The multipoint locking system with automatic latching and hook bolts and profile-related one-piece and standard system strike plates are perfectly fitted. The latching bolt has a special contour

with a thickness of 11 mm. This keeps the door in position, ensures optimum contact pressure, and allows the hook bolt to run in absolutely smoothly. Both locking elements in combination

ensure comprehensive security and tightness. Both latching and hook bolt powerfully extend to 20 mm and are secured against being pushed back.

Tight closing – without re-locking

✓ 11 mm strong latching bolt keeps the door in position and ensures contact pressure

✓ The stable hook bolt ensures security

✓ The wide box allows non-contact run of the hook bolt

✓ Tamper-proof and dirt-resistant magnetic release



DuoSecure for all materials.

Every door material has its own special requirements for locks and frame components. The automatic multipoint locking systems **autosafe** 835 and **autotronic** 836 have been specially matched for this. Thanks to **DuoSecure** technology, doors of all materials can

now lock automatically and securely, even under the most demanding thermal conditions or in critical installation situations. Even in cases where conventional automatic locks reach their limits, the type 10 locking system offers the certainty of a door that is always

closed securely – even without re-locking. Another benefit for doors of all kinds is that it achieves higher security levels due to five locking elements.

Aluminium/Steel



Timber



uPVC



Sophisticated technology – easy to use.

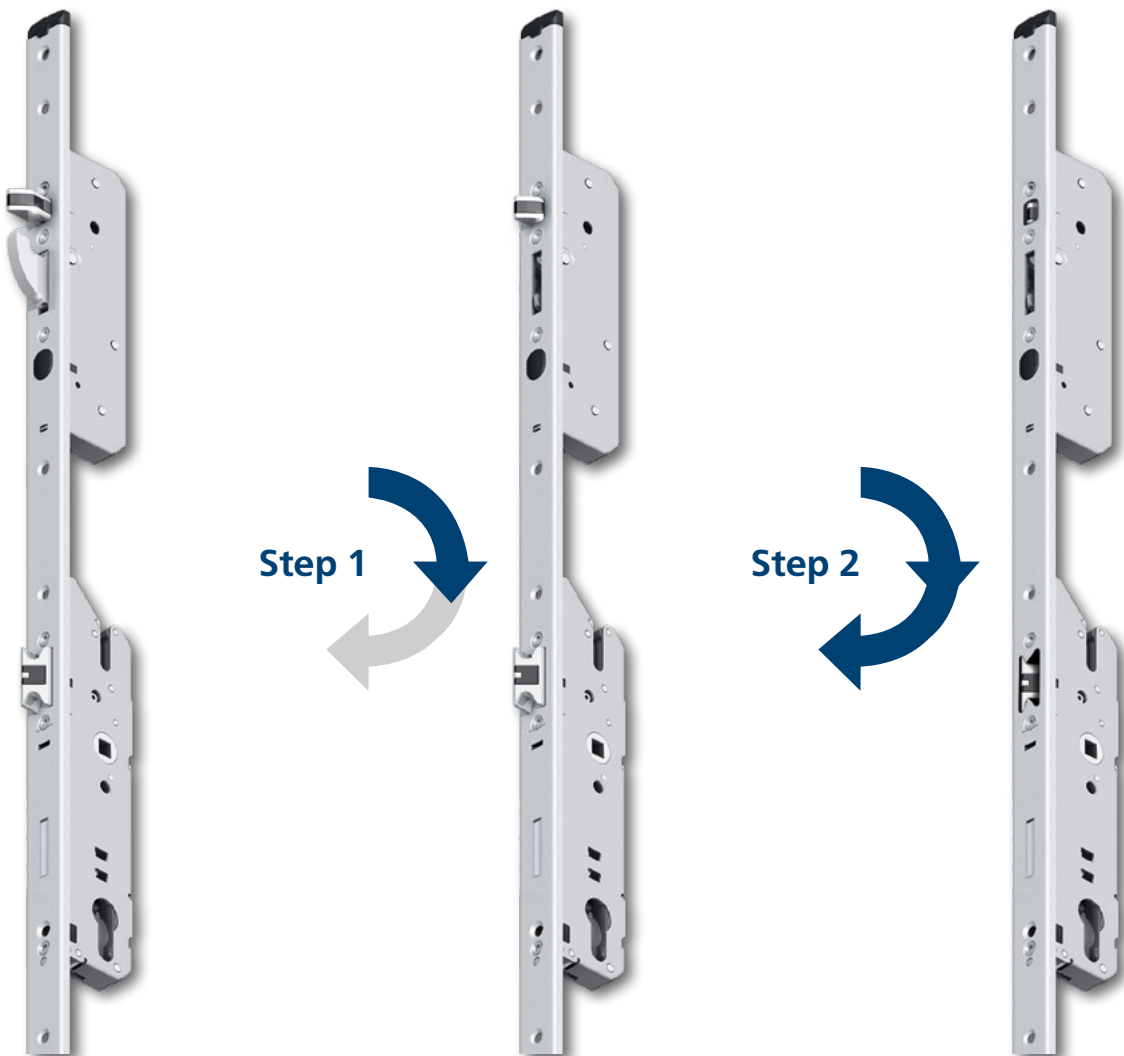
Convenient opening

So that the door can be easily opened with the key in any situation, there is a smart solution – two-step opening. This innovative mechanism leads to low, even operating forces. Both with the key and with the lever.



From the outside: effortlessly via the cylinder

A two-step opening sequence makes it child's play to retract all locking elements and open the door.



The latching bolts are retracted by only **10 mm** and the hook bolts are already completely retracted.

Then, the latching bolts and the main latch are fully retracted and the door can be opened.



**From the inside:
just via the lever**

During usual lever operation, the main latch, the latching bolts and the hook bolts are retracted.



**Convenient opening via
access control systems**

In addition, the **autotronic 836** can also be opened very easily by motor, for instance from the inside via a home intercom system or from the outside with modern access control systems.



Completely new – not just a new type. Proven technology combined with innovative ideas.

autosafe 835 – outstanding characteristics



Smooth and secure closing – thanks to noise-insulated interior and DuoSecure technology for additional safety.



Tamper-proof, wear-free and dirt-resistant magnetic release of the latching/hook bolt combination.

Great tolerance compensation through the use of high-performance magnets.



Comfort latch – for a smooth closing process.



Wide range with proven technology – successfully completed durability tests with more than 200,000 operating cycles document the longevity.



High energy savings thanks to consistent sealing due to adjustable standard strike plates and automatic locking.



Retrofit motor drive – provides maximum flexibility in responding to customer requests.



autotronic 836 – outstanding characteristics



Control LED for the outside of the door – can be connected directly to the motor drive.



Assembled motor drive – the autotronic 836 is equipped with a factory-fitted motor drive.



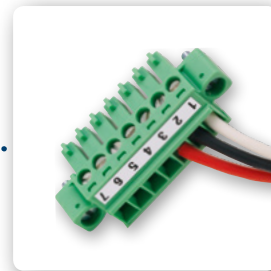
Patented double motor principle – already proven many times in the autotronic 834 and multitronic 881 series. It provides quick and powerful release within half a second. Tested with 500,000 operating cycles.



Radio receiver module – optional for receiving a radio signal for opening the door without separate control. Can be plugged onto the motor drive and connected directly there.



Intelligent motor drive with reed switch – allows easy use of spring-loaded contacts and ensures immediate release of the latch and the latching bolt directly after the door opening.



Universal connection options directly on the motor connector – for example, for access control systems or illuminated glazing elements.



The FUHR automatic series – variety for all doors.

Efficient processing is guaranteed because the cut-outs and screw holes are identical for all products.





Multipoint locking systems for private and public doors

autosafe 835

Automatic multipoint locking system

autosafe 835TF

Automatic multipoint locking system with day latch function

autosafe 835SP

Automatic multipoint locking system with integrated access restriction. Can also be deactivated from outside via the main lock

autotronic 836

Automatic multipoint locking system with motorised unlocking



Multipoint locking systems for single- and double-leaf emergency exit doors

autosafe 835P

Automatic panic multipoint locking system

autotronic 836P

Automatic panic multipoint locking system with motorised unlocking

autosafe 835PK

Automatic panic multipoint locking system with integrated switching contacts for the monitoring of deadbolts, levers and/or cylinders, for example, for integration in burglar alarm systems

autotronic 836PK

Automatic panic multipoint locking system with motorised unlocking and switching contacts for the monitoring of deadbolts, levers and/or cylinders, for example, for integration in burglar alarm systems. Also for convenient motor support when opening by lever or cylinder with servo technology



The automatic locking system with type 10. Always suitable.

Description

Automatic multipoint locking system.
Suitable for main and side entrance
doors made of aluminium, timber and
uPVC.

- With secondary locks type 10 –
automatic latching bolts with steel
hook bolts
- Prepared for profile or round cylinder,
no free-running cylinder needed
- Right- and left-hand use by simple
latch changeover
- Fire-resistant design optionally
available
- Available with panic function B and E
(**autosafe 835P** and **autotronic 836P**)
- Available with switching contacts and
panic function E (**autosafe 835PK**
and **autotronic 836PK**)

Technical details

- **Faceplate options:**
Flat 16, 20 and 24 mm,
U 22 x 6, 24 x 6, 24 x 6.7
and U 30 x 8 mm
- **Surface:**
FUHR Silver, FUHR Silver ground
finish and stainless steel
- **Backset:**
35, 40, 45, 50, 55, 65 and 80 mm
- **Follower:**
8 and 10 mm,
9 mm (panic function E and B)
- **Centre:**
Profile cylinder 92/72 mm,
Round cylinder 94/74 mm

Optional design variants



Fire-resistant version

Optionally available;
already standard for panic
locking systems



Emergency exit door functions

Switching function B
and key-operated latch
function E available



Controlled latch locking

Optional design for panic
function E (not permitted
for fire protection doors)

Numerous accessories – variety of solutions without additional effort



NEW: retrofit motor

for **autosafe** 835/835P/835PK.
Retrofitting with **autosafe** 835TF only in connection with a mechanical door strike without release lever



Access restriction lock

can be retrofitted; to restrict opening of the door; can only be operated from the inside



Additional deadbolt lock

can be retrofitted; as an independent deadbolt from the main lock



Extension

for door heights up to 4,000 mm



Panic push bars

according to EN 1125, aluminium or stainless steel



Panic fittings

according to EN 179, aluminium



Cable for servo technology

for **autotronic** 836PK for motorised support when opening by lever and/or key



Cable for switching contacts

for **autosafe** 835PK/**autotronic** 836PK for lock monitoring



Fully motorised inactive leaf opening

available on request

One for all – system technology for flexible and efficient processing.

The new system frame components can also be used universally for key operated and automatic locks as well as panic and motor designs with locking types 4 and 11. Now also for the new locking type 10. This means consistently low storage requirements for retailers and processors, and, at the same time, increased flexibility through even more diverse application options. The FUHR frame components offer the well-known and proven system advantages as well as an appealing look for upgrading the door rebate area.

Your benefits:

- ✓ A universal frame component for all lock types
- ✓ Optimum tightness due to adjustable locking boxes made of metal
- ✓ Efficiency in production
- ✓ Economic storage
- ✓ Safety in processing through system components
- ✓ Flexible response to customer requests
- ✓ Reliable longevity through high-quality materials
- ✓ Attractive appearance in the door rebate

Type 4/10/11
One-piece system
strike plate



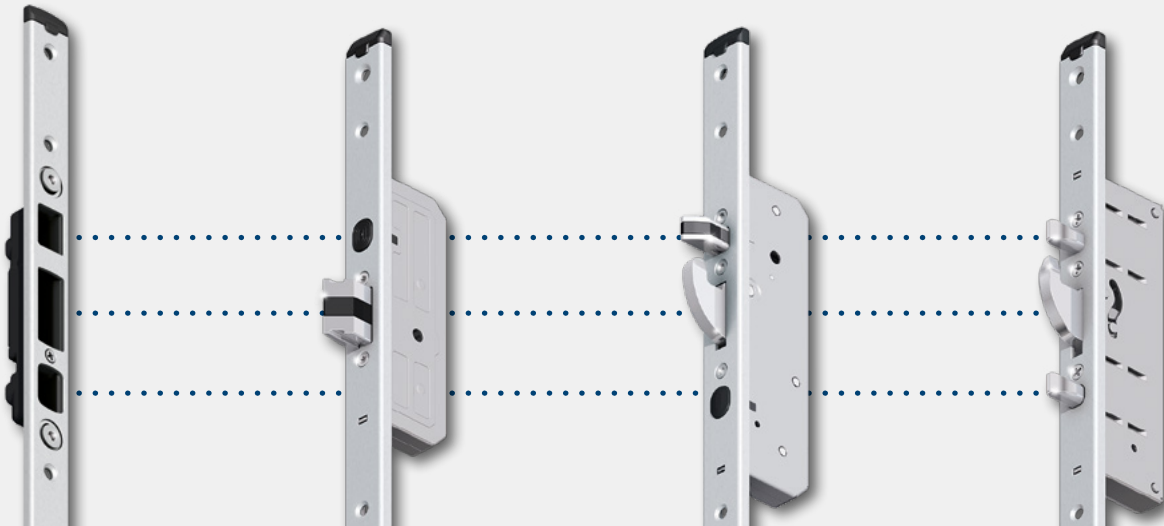
Type 4
Automatic
deadlocking latch



Type 10
Automatic latching
and hook bolts



Type 11
Hook bolt with
dual round bolts



Type 4/10/11

One-piece system
strike plate



Type 4

Automatic
deadlocking latch



autosafe 833 / autotronic 834 series

Type 10

Automatic latching
and hook bolts



autosafe 835 / autotronic 836 series

Type 11

Hook bolts with
dual round bolts



multisafe 855GL/870GL / multitronic 881GL series

Optional accessories for frame components.



Type 10 magnet release

- For use with locks of type 10
- Suitable for all one-piece and standard system strike plates



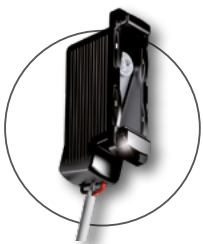
Type 4 magnet release

- For use with locks of type 4
- Suitable for all one-piece and standard system strike plates



Contact magnet

- For use with the FUHR motorised locks **multitronic** and **autotronic**
- Suitable for all one-piece system strike plates



Deadbolt switching contact

- Strike plate contact for monitoring the locking status
- Simple retrofitting – without screwing
- VdS approval, class C



Deadbolt switching contact type 4/10/11

- For monitoring the locking status of additional bolts
- Simple retrofitting
- VdS approval, class C



Electric strikes

- For use with **autosafe 835TF** with day latch function
- Symmetrical
- With radius latch and special latch component
- Left-/right-hand use
- Universal voltage range
- Wide design variety



Mechanical door strikes

- For use with **autosafe 835TF** with day latch function
- With or without release lever
- Symmetrical
- With radius latch and special latch component
- Left-/right-hand use



Radio receiver for electric strikes

- For use with **autosafe 835TF**
- Remotely opens doors fitted with electric strikes via FUHR access control systems
- Works with FUHR door strikes and all other standard door strikes
- Comes with radio master key
- Ideal for retrofitting

Motorised automatic multipoint locking systems. The convenient way to experience safety.

In addition to secure, automatic locking, **autotronic 836** offers a wide range of convenient opening options thanks to its high-quality motor drive: via the home intercom system, with the FUHR radio access systems or via any

other access control system, including SmartHome solutions. The numerous connection options on the motor and the optional control open up innumerable perspectives for use.

All functions of the autotronic 836 can also be achieved by retrofitting the motor drive to the autosafe 835.



autotronic 836 – sheer variety

- ✓ Comfortable, powerful motorised opening through access control systems
- ✓ Fast motorised unlocking within half a second
- ✓ Motor drive with LED connection for optional locking indicator on the outside of the door
- ✓ Integrated reed contact for the motor control
- ✓ Easy to add FUHR radio access control systems
- ✓ Using the intelligent control allows further expansion steps as object-specific solutions, for example:
 - permanently open function
 - electronic deactivation of the access control systems
 - swing door drive function
 - door leaf position detection
- ✓ Also available as panic locking system for single- and double-leaf emergency exit doors according to EN 179 and EN 1125



FUHR autotronic 836.

The sophisticated system for every application.

The FUHR **autotronic 836**, with its motorised opening and versatile connection options, offers the optimum solution to meet even the most demanding requirements. Both for new buildings and for integration into existing objects. The modular individual components can be installed very quickly and easily via plug & play.

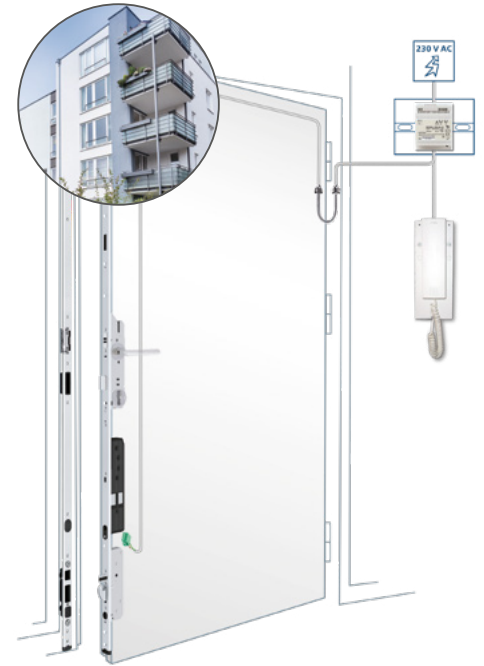
Operating comfort through access control systems

The system concept of the FUHR automatic programme makes it easy to integrate the various FUHR access control systems. What they all have in common is: They ensure high operating comfort, impress with their reliability, and are particularly easy to install thanks to radio technology.

Installation examples



Installation of all components in the door



With cable transition and DIN rail power supply



With the radio receiver module, spring-loaded contact, and switching power supply for installation in the door frame



With spring-loaded contact and DIN rail components for mounting in the control cabinet

Radio access control systems for individual operating comfort.



SmartConnect easy

Easy door opening and monitoring via smartphone. Intelligent access control system using Wi-Fi. Controls FUHR motorised locks, garage doors, electric strikes, shutters, lighting and much more.



SmartTouch comfort access system

No more searching for a key – the SmartKey in your pocket is enough. The KeylessGo feature provides keyless opening comfort by a simple touch on the stainless steel door handle. Alternatively also available as activation sensor.



Radio fingerprint scanner

Keyless biometric access control with 2-channel technology for opening of, for example, front door and garage. Designed to meet your requirements:

- **multiscan**
- **multiscan VdS** – for certified locking systems
- **multiscan go** – for comfortable programming by remote control



Radio transponder reader

Easy way of opening doors and garage doors via transponder that only needs to be held in front of the reader. Set consisting of 2 master and 3 user transponders. With 2-channel technology.



Radio keypad

Can open door and garage door via two individually programmable 4- to 8-digit codes. With separate button for a radio bell.



Radio keys

Remote opening with 3- or 4-channel technology, for example of front door, side door, garage door and driveway gates.

All images and details of products, dimensions and designs were accurate at the time of going to press. We reserve the right to make changes in the interest of technical progress. Claims relating to specific models or products cannot be asserted. We accept no liability for misprints.

Picture credit page 1: © Bien-Zenker GmbH
Picture credit page 4: © goodluz – Fotolia.com (family)
Picture credit page 5: © Thomas Drexel/thomas-drexel@gmx.de, Fuchs, Wacker, Architects BDA, Stuttgart, www.fuchswacker.de
Picture credit page 10/11: © Helmut Seisenberger – Fotolia.com (handle/hand)
Picture credit page 11: © Monkey Business – Fotolia.com (family inside door)
Picture credit page 22: © Tiberius Gracchus – Fotolia.com (object, apartment building)

CARL FUHR GmbH & Co. KG
Locks and Hardware

Carl-Fuhr-Straße 12
42579 Heiligenhaus
Germany

Tel.: +49 2056 592-0
Fax: +49 2056 592-384

www.fuhr.de · info@fuhr.de

