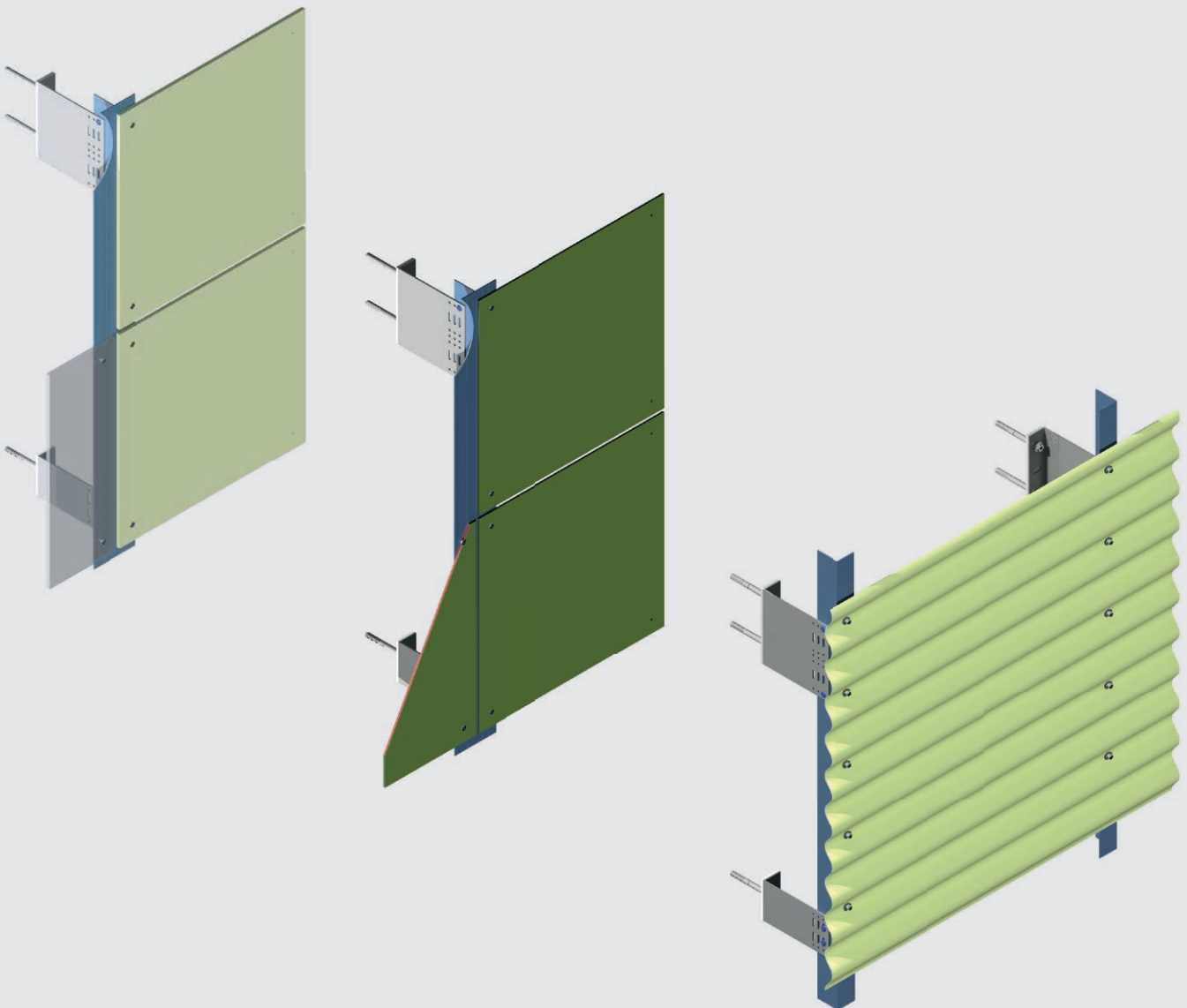


# Systema®

## ALWI-S:

Unterkonstruktionen für die sichtbare Befestigung großformatiger Fassadentafeln, z. B. aus Faserzement, Aluminiumverbundplatten oder HPL.



# Systema®

**ALWI:**

**Unterkonstruktionen für Aluminium-Profiltafeln und ebene Fassadenplatten**

# 01



**ALWI:**

holding tracks for profiled aluminium sheets and flat wall panels

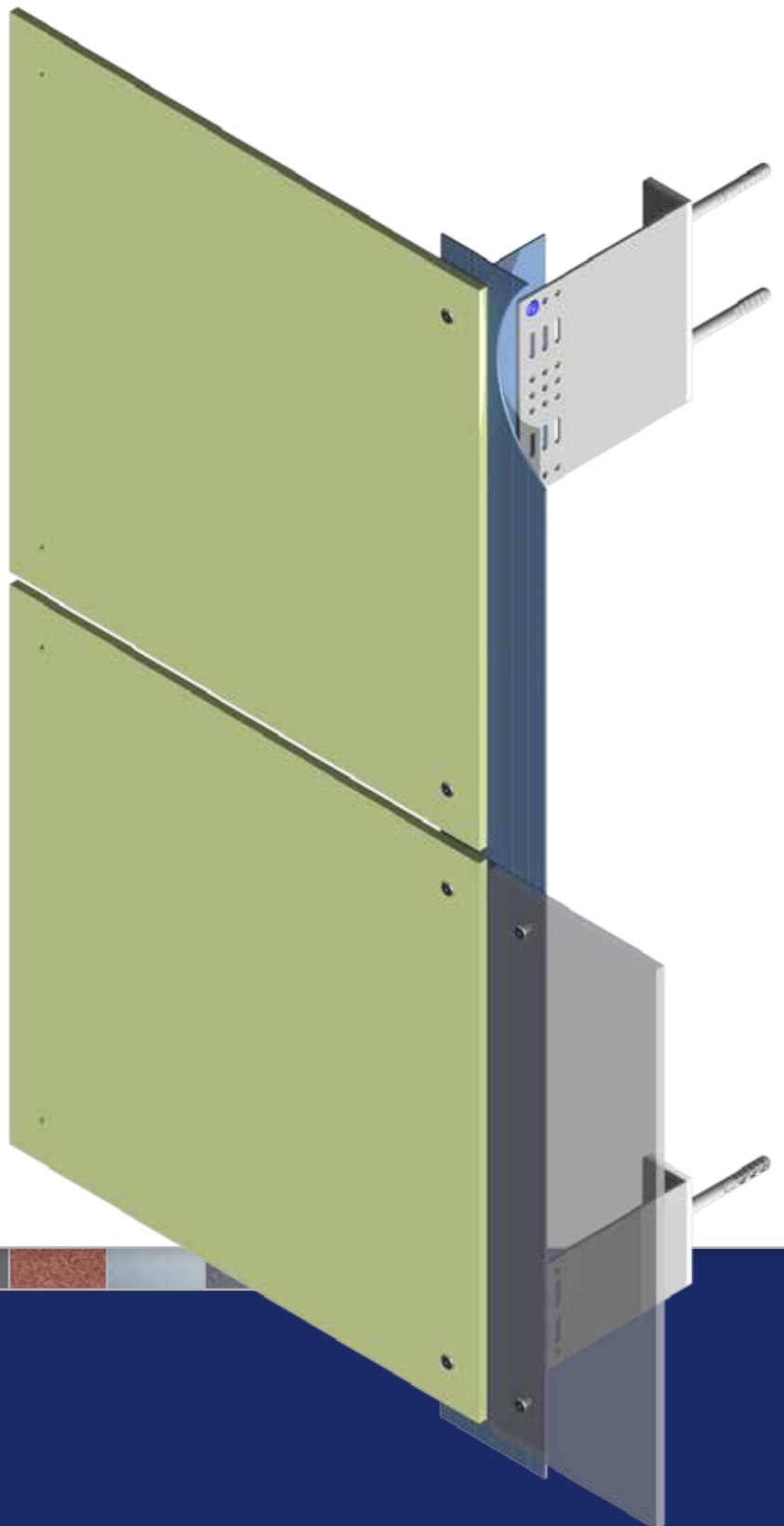
**ALWI:**

ossature pour des plaques en alu et composants

**ALWI:**  
Unterkonstruktionen für Aluminium-Profiltafeln  
und ebene Fassadenplatten

**ALWI:**  
holding tracks for profiled aluminium  
sheets and flat wall panels

**ALWI:**  
ossature pour des plaques en alu  
et composants



## Inhaltsverzeichnis Contents Index

System: **ALWI**  
Unterkonstruktionen für Aluminium-Profiltafeln und ebene  
Fassadenplatten

System: **ALWI**  
holding tracks for profiled aluminium sheets and flat wall panels

Système: **ALWI**  
ossature pour des plaques en alu et composants

Seite  
page  
page

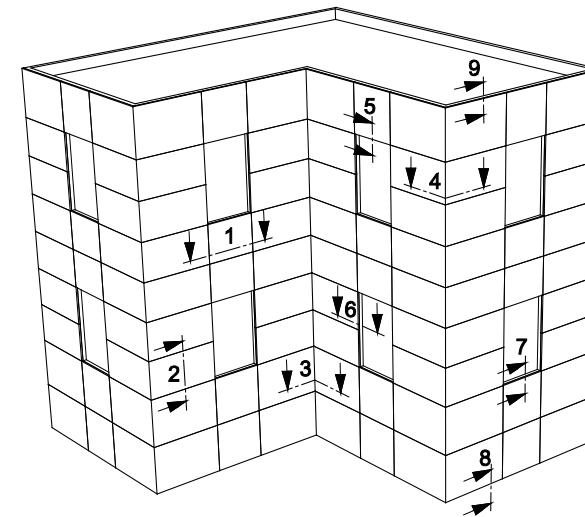
01.02	Schnittübersicht	summery of sections	vue d'ensemble
01.03	Isometrie	isometric view	dessin isométrique
01.04	Schnitt horizontal	section horizontal	coupe horizontale
01.05	Schnitt vertikal	section vertical	coupe verticale
01.06	Innenecke	internal corner	coin intérieur
01.07	Außenecke	external corner	coin extérieur
01.08	Fenstersturz	window lintel	linteau
01.09	Jalousienkasten	shutter case	carter persienne
01.10	Fensterlaibung	window recess	joue de fenêtre
01.11	Fensterbank	windowsill	bavette de fenêtre extérieure
01.12	Sockelabschluss	bottom closure	tôle basse de calfeutrement (raccord de socle)
01.13	Attikaabschluss	parapet	couvre-mur
01.14	Profilübersicht ALWI	profile list ALWI	ensemble de profil ALWI

## ALWI

Schnittübersicht

summery of sections

vue d'ensemble



Schnitt 1: horizontal  
Schnitt 2: vertikal  
Schnitt 3: Innenecke  
Schnitt 4: Außenecke  
Schnitt 5: Fenstersturz  
Schnitt 6: Fensterlaibung  
Schnitt 7: Fensterbank  
Schnitt 8: Sockelabschluss  
Schnitt 9: Attikaabschluss

section 1: horizontal  
section 2: vertical  
section 3: internal corner  
section 4: external corner  
section 5: window lintel  
section 6: window recess  
section 7: windowsill  
section 8: bottom closure  
section 9: parapet

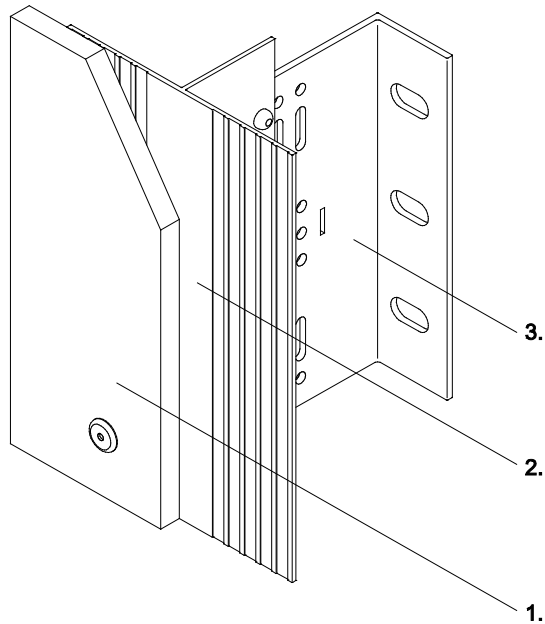
coupe 1: horizontale  
coupe 2: verticale  
coupe 3: coin intérieur  
coupe 4: coin extérieur  
coupe 5: linteau  
coupe 6: joue de fenêtre  
coupe 7: bavette de  
fenêtre extérieure  
coupe 8: tôle basse de  
calfeutrement (raccord de  
socle)  
coupe 9: couvre-mur

## ALWI

Unterkonstruktionen für Aluminium-Profiltafeln und ebene Fassadenplatten

holding tracks for profiled aluminium sheets and flat wall panels

ossature pour des plaques en alu et composants



- 1. Fassadenbekleidung
- 2. senkrechtcs Tragprofil
- 3. Systema L-Wandkonsole

- 1. cladding panel
- 2. vertical holding track
- 3. Systema L-bracket

- 1. revêtement de façade
- 2. profil support vertical
- 3. équerre en L Systema

## Schnitt 1 horizontal

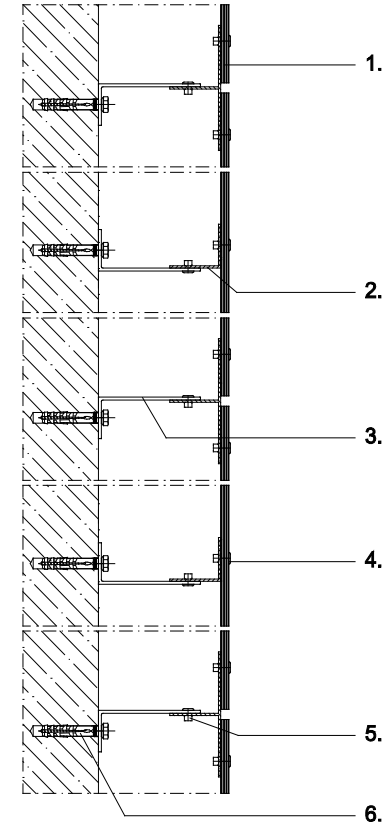
Anordnung der Wandkonsolen

## section 1 horizontal

placement of brackets

## coupe 1 horizontale

règlement des équerres



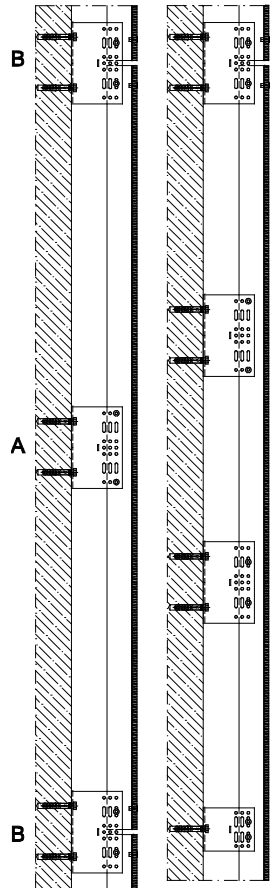
- 1. Fassadenbekleidung
- 2. senkrechtcs Tragprofil
- 3. Systema L-Wandkonsole
- 4. Befestigungsniet
- 5. Verbindungsniet
- 6. Verankerung

- 1. cladding panel
- 2. vertical holding track
- 3. Systema L-bracket
- 4. fixing rivet
- 5. connecting rivet
- 6. fixing

- 1. revêtement de façade
- 2. profil support vertical
- 3. équerre en L Systema
- 4. rivet de fixation
- 5. jonction
- 6. ancrage

## Schnitt 2 vertikal

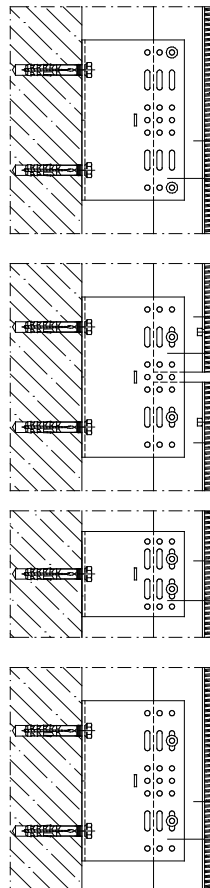
Fest- und Gleitpunkte



1. Fassadenbekleidung
2. senkrechtes Tragprofil
3. Systema L-Wandkonsole

## section 2 vertical

fixed and floating points



1. cladding panel
2. vertical holding track
3. Systema L-bracket

## coupe 2 verticale

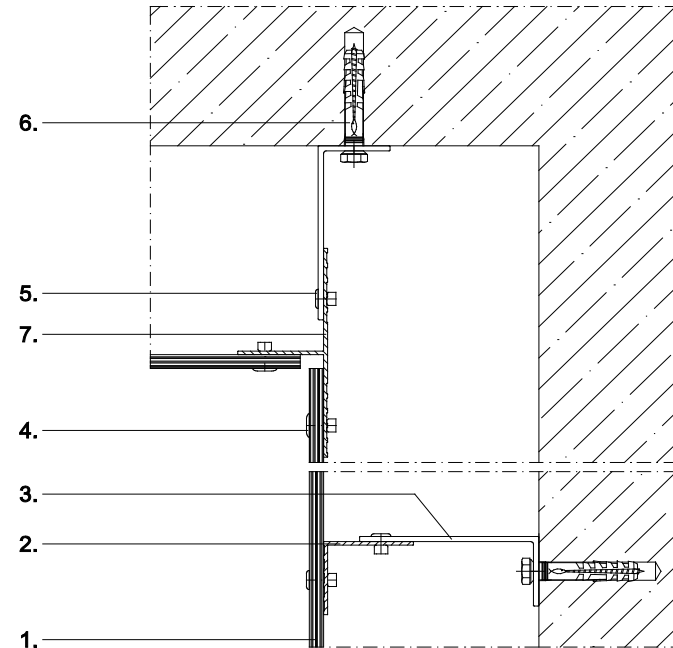
point fixe et glissant

- A **Festpunkt**  
Aufnahme des Eigengewichts durch Nieten im Rundloch
- A **fixed point**  
dead weight is borne by rivets in round hole
- A **point fixe**  
réception du propre poids rivetage dans le trou rond
- B **Gleitstoßpunkt**  
Tragprofilstoß in der horizontalen Plattenfuge, Vernietung in Langlöchern
- B **floating point on the joint**  
profile edge in horizontal panel joint, riveting in long holes
- B **point glissant au joint**  
rivetage dans le trou oblong
- C **Gleitpunkt**  
Vernietung in Langlöchern, ermöglicht Längenausdehnung
- C **floating point**  
riveting in long holes allows expansion
- C **point glissant**  
rivetage dans le trou oblong permet l'extension de la façade
1. revêtement de façade
2. profil support vertical
3. équerre en L Systema

## Schnitt 3 Innenecke

## section 3 internal corner

## coupe 3 coin intérieur



1. Fassadenbekleidung
2. senkrechtes Tragprofil
3. Systema L-Wandkonsole
4. Befestigungsniet
5. Verbindungsniel
6. Verankerung
7. T-Profil 100/50 prof.

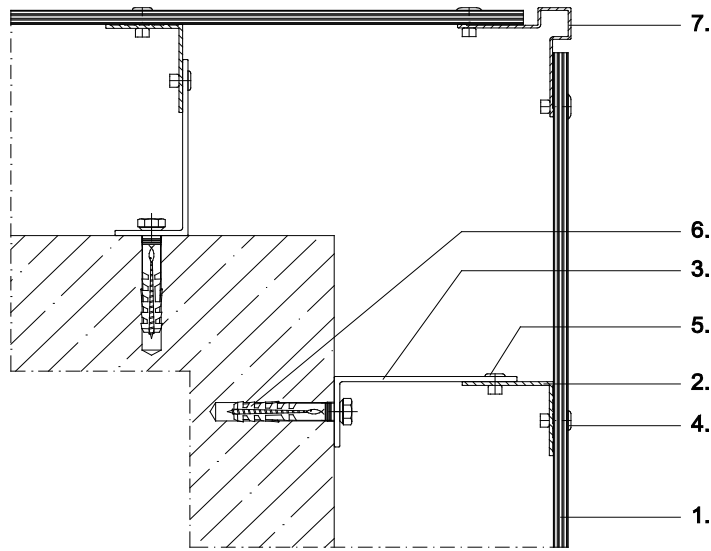
1. cladding panel
2. vertical holding track
3. Systema L-bracket
4. fixing rivet
5. connecting rivet
6. fixing
7. T-profile 100/50 prof.

1. revêtement de façade
2. profil support vertical
3. équerre en L Systema
4. rivet de fixation
5. jonction
6. ancrage
7. profil T 100/50 prof.

**Schnitt 4**  
Außenecke

**section 4**  
external corner

**coupe 4**  
coin extérieur



1. Fassadenbekleidung
2. senkrechtes Tragprofil
3. Systema L-Wandkonsole
4. Befestigungsriem
5. Verbindungsriem
6. Verankerung
7. Außenecke, eckig

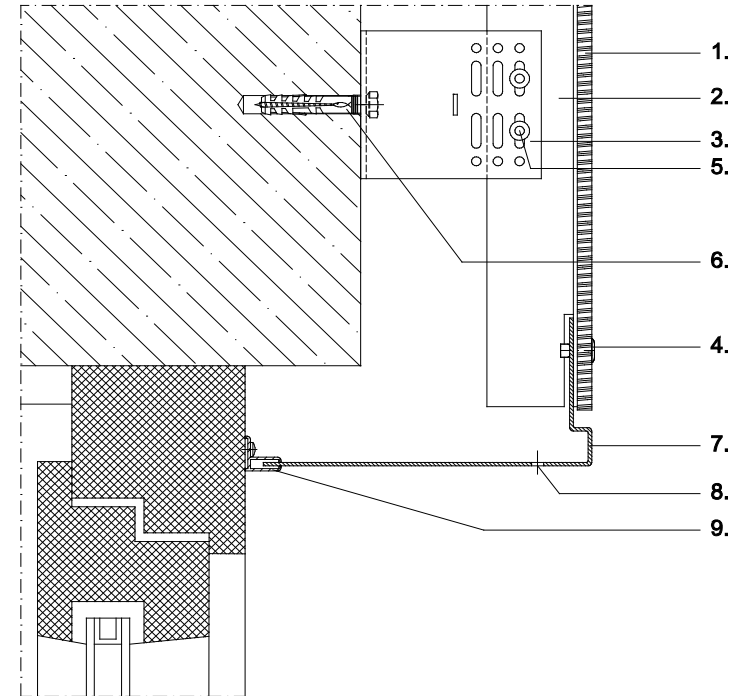
1. cladding panel
2. vertical holding track
3. Systema L-bracket
4. fixing rivet
5. connecting rivet
6. fixing
7. outward corner profile squared

1. revêtement de façade
2. profil support vertical
3. équerre en L Systema
4. rivet de fixation
5. jonction
6. ancrage
7. coin extérieur carré

**Schnitt 5**  
Fenstersturz

**section 5**  
window lintel

**coupe 5**  
linteau



1. Fassadenbekleidung
2. senkrechtes Tragprofil
3. Systema L-Wandkonsole
4. Befestigungsriem
5. Verbindungsriem
6. Verankerung
7. Fensterzarge
8. Belüftungsöffnung
9. Systema Stimmgabelprofil

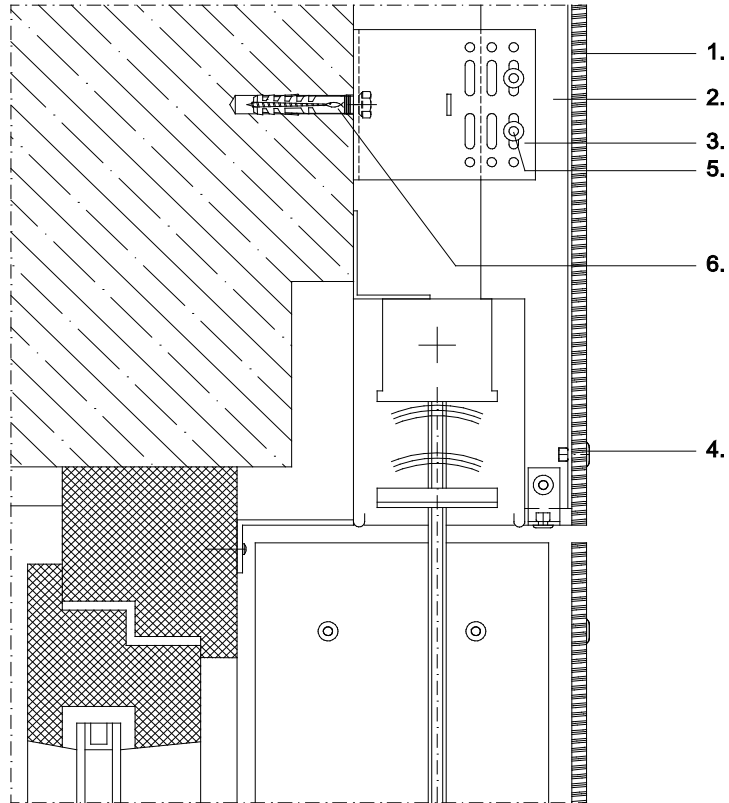
1. cladding panel
2. vertical holding track
3. Systema L-bracket
4. fixing rivet
5. connecting rivet
6. fixing
7. window frame
8. ventilation opening
9. Systema F-profile

1. revêtement de façade
2. profil support vertical
3. équerre en L Systema
4. rivet de fixation
5. jonction
6. ancrage
7. châssis
8. trou pour ventilation
9. profil F Systema (diapason)

**Schnitt 5**  
Jalousienkasten

**section 5**  
shutter case

**coupe 5**  
carter persienne

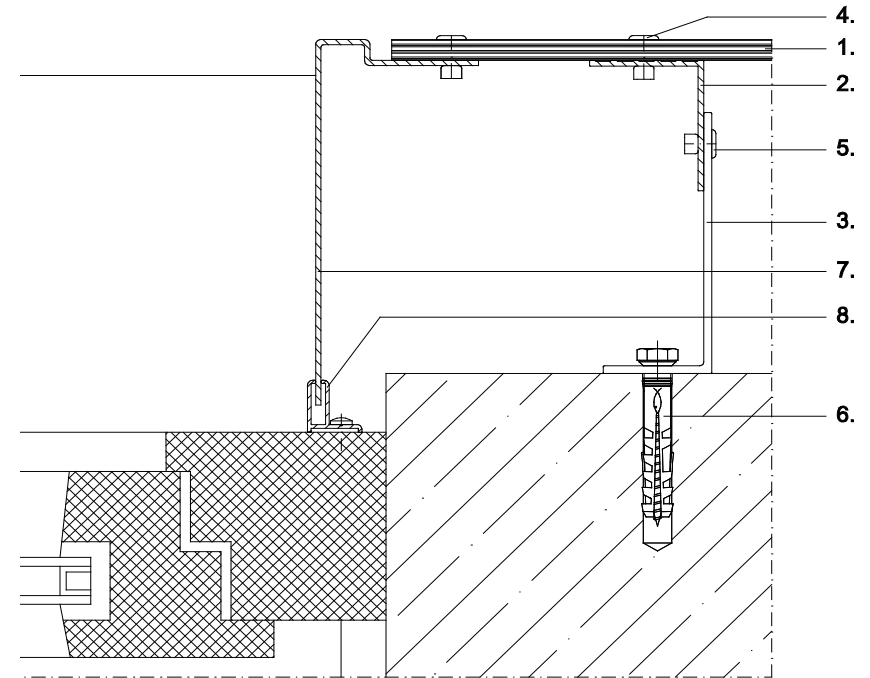


- |                           |                           |                            |
|---------------------------|---------------------------|----------------------------|
| 1. Fassadenbekleidung     | 1. cladding panel         | 1. revêtement de façade    |
| 2. senkrechtes Tragprofil | 2. vertical holding track | 2. profil support vertical |
| 3. Systema L-Wandkonsole  | 3. Systema L-bracket      | 3. équerre en L Systema    |
| 4. Befestigungsniel       | 4. fixing rivet           | 4. rivet de fixation       |
| 5. Verbindungsniel        | 5. connecting rivet       | 5. jonction                |
| 6. Verankerung            | 6. fixing                 | 6. ancrage                 |

**Schnitt 6**  
Fensterlaibung

**section 6**  
window recess

**coupe 6**  
joue de fenêtre



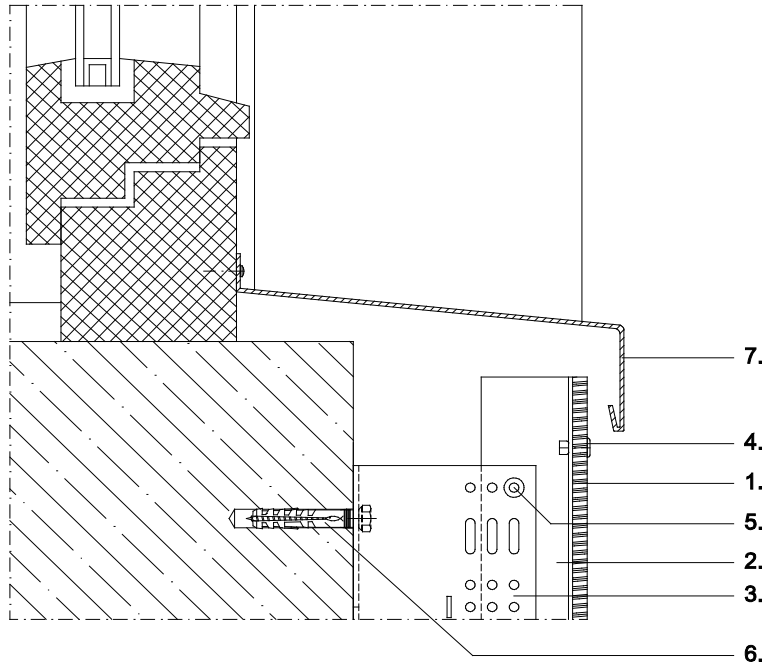
- |                             |                           |                                |
|-----------------------------|---------------------------|--------------------------------|
| 1. Fassadenbekleidung       | 1. cladding panel         | 1. revêtement de façade        |
| 2. senkrechtes Tragprofil   | 2. vertical holding track | 2. profil support vertical     |
| 3. Systema L-Wandkonsole    | 3. Systema L-bracket      | 3. équerre en L Systema        |
| 4. Befestigungsniel         | 4. fixing rivet           | 4. rivet de fixation           |
| 5. Verbindungsniel          | 5. connecting rivet       | 5. jonction                    |
| 6. Verankerung              | 6. fixing                 | 6. ancrage                     |
| 7. Fensterzarge             | 7. window frame           | 7. châssis                     |
| 8. Systema Stimmgabelprofil | 8. Systema F-profile      | 8. profil F Systema (diapason) |



**Schnitt 7**  
Fensterbank

**section 7**  
windowsill

**coupe 7**  
bavette de fenêtre  
extérieure



- 1. Fassadenbekleidung
- 2. senkrechtes Tragprofil
- 3. Systema L-Wandkonsole
- 4. Befestigungsriet
- 5. Verbindungsriet
- 6. Verankerung
- 7. Systema Fensterbank

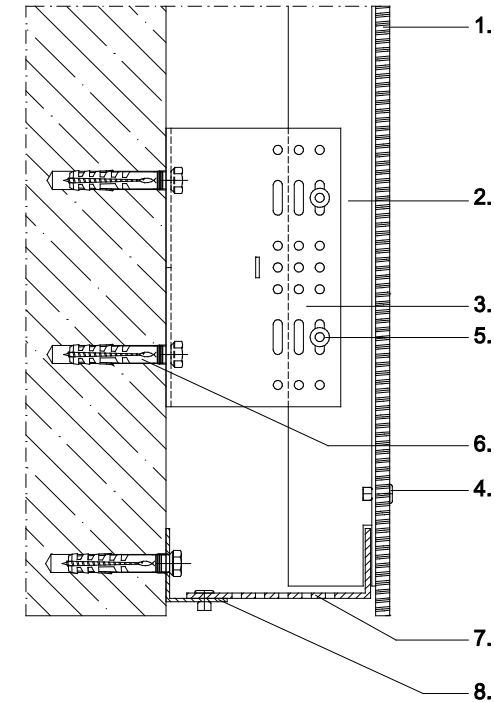
- 1. cladding panel
- 2. vertical holding track
- 3. Systema L-bracket
- 4. fixing rivet
- 5. connecting rivet
- 6. fixing
- 7. Systema windowsill

- 1. revêtement de façade
- 2. profil support vertical
- 3. équerre en L Systema
- 4. rivet de fixation
- 5. jonction
- 6. ancrage
- 7. bavette Systema

**Schnitt 8**  
Sockelabschluss

**section 8**  
bottom closure

**coupe 8**  
tôle basse de  
cafeutrement  
(raccord de socle)



- 1. Fassadenbekleidung
- 2. senkrechtes Tragprofil
- 3. Systema L-Wandkonsole
- 4. Befestigungsriet
- 5. Verbindungsriet
- 6. Verankerung
- 7. Abschlusswinkel mit Belüftung
- 8. Wandwinkel

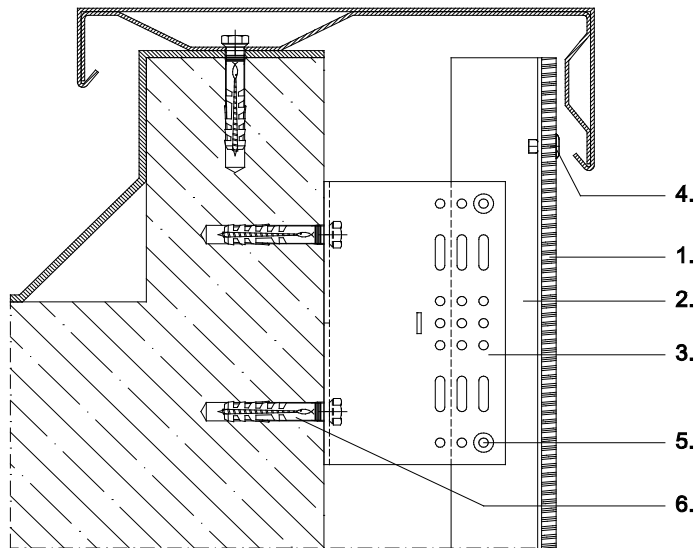
- 1. cladding panel
- 2. vertical holding track
- 3. Systema L-bracket
- 4. fixing rivet
- 5. connecting rivet
- 6. fixing
- 7. base angle with ventilation system
- 8. wall angle

- 1. revêtement de façade
- 2. profil support vertical
- 3. équerre en L Systema
- 4. rivet de fixation
- 5. jonction
- 6. ancrage
- 7. angle avec trou de ventilation
- 8. angle

**Schnitt 9**  
**Attikaabschluss**

**section 9**  
**parapet**

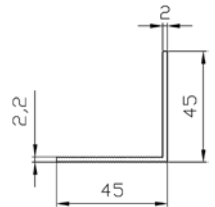
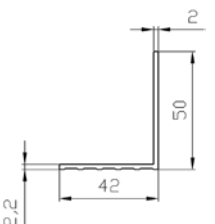
**coupe 9**  
**couvre-mur**

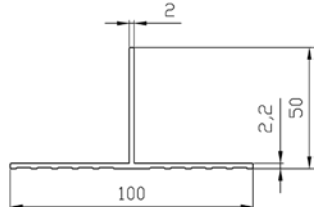
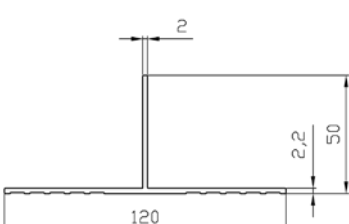


- |                           |                           |                            |
|---------------------------|---------------------------|----------------------------|
| 1. Fassadenbekleidung     | 1. cladding panel         | 1. revêtement de façade    |
| 2. senkrechtes Tragprofil | 2. vertical holding track | 2. profil support vertical |
| 3. Systema L-Wandkonsole  | 3. Systema L-bracket      | 3. équerre en L Systema    |
| 4. Befestigungsriet       | 4. fixing rivet           | 4. rivet de fixation       |
| 5. Verbindungsriet        | 5. connecting rivet       | 5. jonction                |
| 6. Verankerung            | 6. fixing                 | 6. ancrage                 |

**Inhaltsverzeichnis Profilübersicht ALWI**  
**Contents profile list ALWI**  
**Index ensemble de profil ALWI**

Seite page page	Profile	profiles	profilés
	<b>vertikale Tragprofile</b>	<b>vertical holding tracks</b>	<b>rails porteurs verticaux</b>
01.15	Winkelprofil 45/45 Wanddicke 2mm prof.	L-profil 45/45 wall thickness 2mm prof.	profil L 45/45 épaisseur du mur 2mm prof.
	Winkelprofil 42/50 Typ I prof.	L-profil 42/50 Typ I prof.	profil L 42/50 Typ I prof.
01.16	T-Profil 100/50 prof.	T-profile 100/50 prof.	profil T 100/50 prof.
	T-Profil 120/50 prof.	T-profile 120/50 prof.	profil T 120/50 prof.
	<b>L-Wandkonsolen</b>	<b>L-brackets</b>	<b>équerres en L</b>
01.17	WB 0 - 85/160/250mm	WB 0 - 85/160/250mm	WB 0 - 85/160/250mm
01.18	WB 1-6 - 85/160/250mm	WB 1-6 - 85/160/250mm	WB 1-6 - 85/160/250mm
01.19	WB 7-9,5 - 85/160/250	WB 7-9,5 - 85/160/250	WB 7-9,5 - 85/160/250
01.20	WB 10-14 - 85/160/250mm	WB 10-14 - 85/160/250mm	WB 10-14 - 85/160/250mm

Profiltyp profile type type de profil	Länge (mm) length (mm) longueur (mm)	Material material matériel	Einzelpreis unit price prix unitaire
 <p>Winkelprofil 45/45 Wanddicke 2mm prof. L-profile 45/45 wall thickness 2mm prof. profile L 45/45 épaisseur du mur 2mm prof.</p>	5600 6000	EN AW 6063 T66	
 <p>Winkelprofil 42/50 Typ I prof. L-profile 42/50 Typ I prof. profile L 42/50 Typ I prof.</p>	3000 6000	EN AW 6063 T66	

Profiltyp profile type type de profil	Länge (mm) length (mm) longueur (mm)	Material material matériel	Einzelpreis unit price prix unitaire
 <p>T-Profil 100/50 prof. T-profile 100/50 prof. profile T 100/50 prof.</p>	3000 5600 6000	EN AW 6063 T66	
 <p>T-Profil 120/50 prof. T-profile 120/50 prof. profile T 120/50 prof.</p>	3000 5600 6000	EN AW 6063 T66	

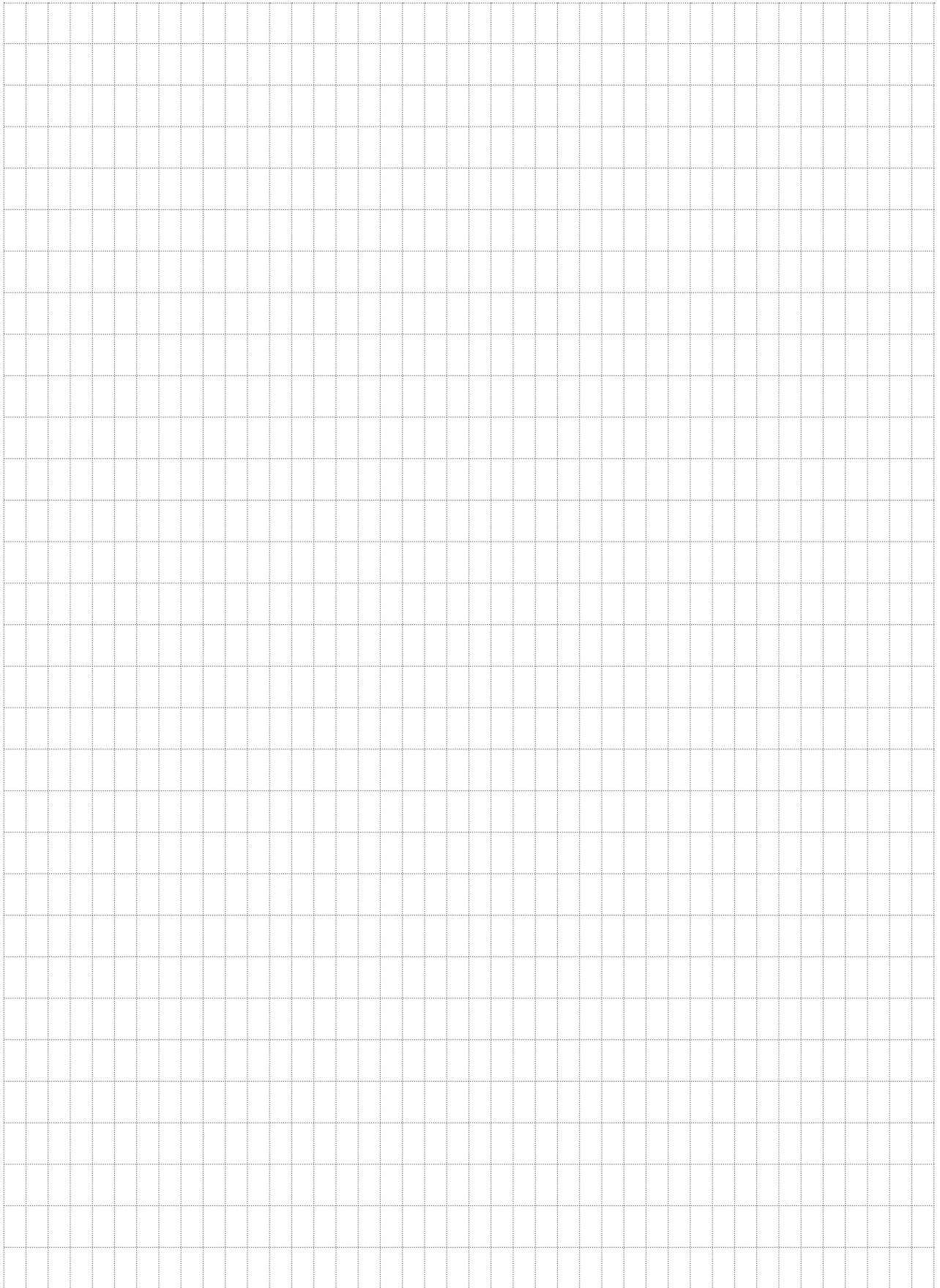
Profiltyp profile type type de profil	Länge (mm) length (mm) longueur (mm)	Material material matériau	Einzelpreis unit price prix unitaire
	WB0 40/40/3-85	EN AW 6063 T66	
	WB0 40/40/3-160	EN AW 6063 T66	
	WB0 40/40/3-250	EN AW 6063 T66	
	WB0 40/40/3 - 85/160/250mm		

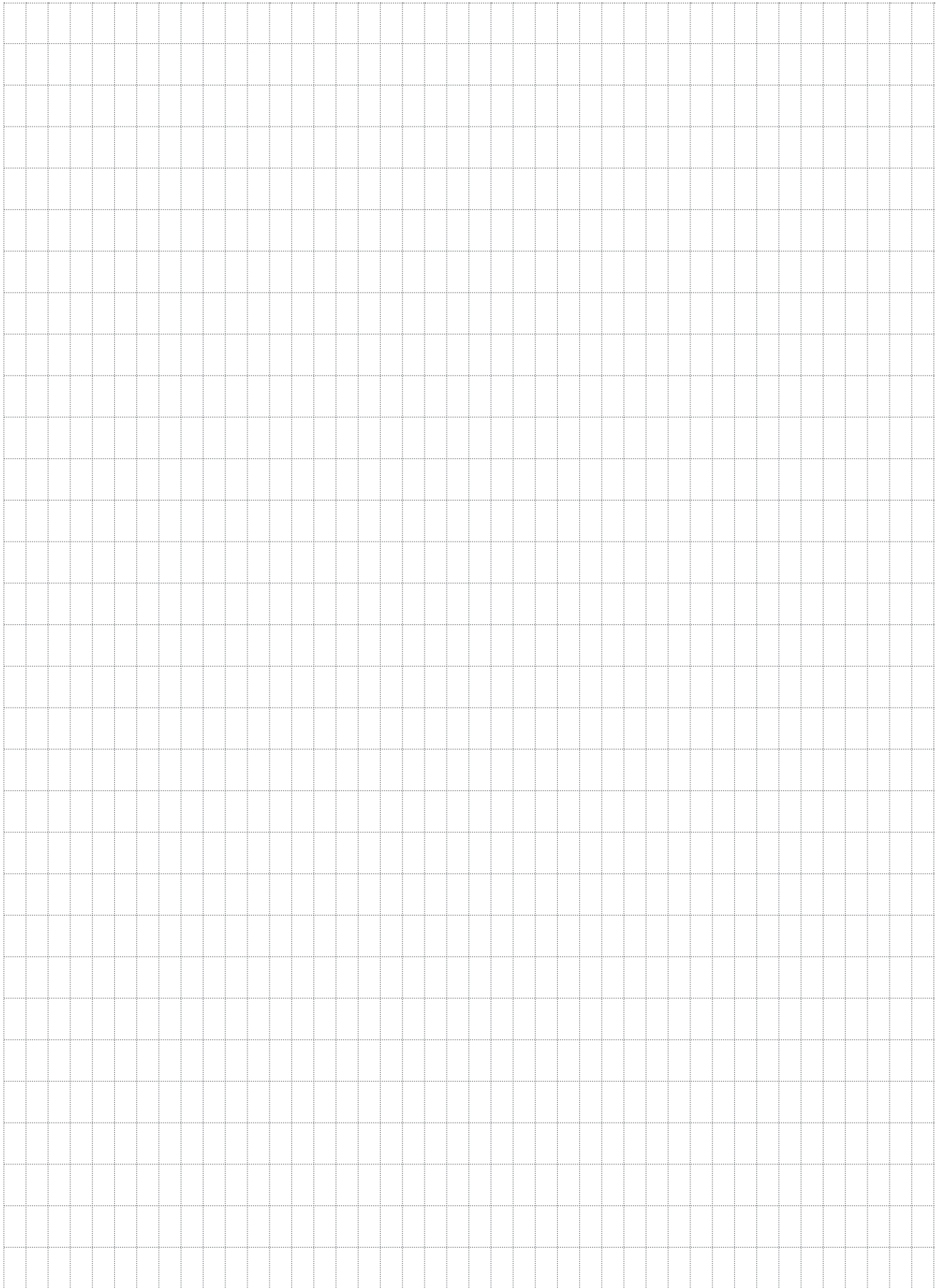
Profiltyp profile type type de profil	Länge (mm) length (mm) longueur (mm)	Material material matériau	Einzelpreis unit price prix unitaire
	WB1 40/60/3-85 WB2 40/80/3-85 WB3 40/100/3-85 WB4 40/120/3-85 WB5 40/140/3-85 WB6 40/160/3-85	EN AW 6063 T66	
	WB1 40/60/3-160 WB2 40/80/3-160 WB3 40/100/3-160 WB4 40/120/3-160 WB5 40/140/3-160 WB6 40/160/3-160	EN AW 6063 T66	
	WB1 40/60/3-250 WB2 40/80/3-250 WB3 40/100/3-250 WB4 40/120/3-250 WB5 40/140/3-250 WB6 40/160/3-250	EN AW 6063 T66	
	WB 1-6 - 85/160/250mm		

L-Wandkonsole L-bracket équerre en L	Länge L length L longueur L
WB1	60 mm
WB2	80 mm
WB3	100 mm
WB4	120 mm
WB5	140 mm
WB6	160 mm

Profiltyp profile type type de profil	Länge (mm) length (mm) longueur (mm)	Material material matériau	Einzelpreis unit price prix unitaire													
<p>WB7-9,5 - 85/160/250mm</p>	WB7 40/180/4/3-85 WB8 40/200/4/3-85 WB8,5 40/210/4/3-85 WB9 40/220/4/3-85 WB9,5 40/230/4/3-85	EN AW 6063 T66														
	WB7 40/180/4/3-160 WB8 40/200/4/3-160 WB8,5 40/210/4/3-160 WB9 40/220/4/3-160 WB9,5 40/230/4/3-160	EN AW 6063 T66														
	WB7 40/180/4/3-250 WB8 40/200/4/3-250 WB8,5 40/210/4/3-250 WB9 40/220/4/3-250 WB9,5 40/230/4/3-250	EN AW 6063 T66														
	<table border="1"> <thead> <tr> <th>L-Wandkonsole L-bracket équerre en L</th> <th>Länge L length L longueur L</th> </tr> </thead> <tbody> <tr> <td>WB7</td> <td>180 mm</td> </tr> <tr> <td>WB8</td> <td>200 mm</td> </tr> <tr> <td>WB8,5</td> <td>210 mm</td> </tr> <tr> <td>WB9</td> <td>220 mm</td> </tr> <tr> <td>WB9,5</td> <td>230 mm</td> </tr> </tbody> </table>		L-Wandkonsole L-bracket équerre en L	Länge L length L longueur L	WB7	180 mm	WB8	200 mm	WB8,5	210 mm	WB9	220 mm	WB9,5	230 mm		
	L-Wandkonsole L-bracket équerre en L	Länge L length L longueur L														
	WB7	180 mm														
	WB8	200 mm														
	WB8,5	210 mm														
	WB9	220 mm														
	WB9,5	230 mm														

Profiltyp profile type type de profil	Länge (mm) length (mm) longueur (mm)	Material material matériau	Einzelpreis unit price prix unitaire													
<p>WB10-14 - 85/160/250mm</p>	WB10 43/240/4/3-85 WB11 43/260/4/3-85 WB12 43/280/4/3-85 WB13 43/300/4/3-85 WB14 43/320/4/3-85	EN AW 6063 T66														
	WB10 43/240/4/3-160 WB11 43/260/4/3-160 WB12 43/280/4/3-160 WB13 43/300/4/3-160 WB14 43/320/4/3-160	EN AW 6063 T66														
	WB10 43/240/4/3-250 WB11 43/260/4/3-250 WB12 43/280/4/3-250 WB13 43/300/4/3-250 WB14 43/320/4/3-250	EN AW 6063 T66														
	<table border="1"> <thead> <tr> <th>L-Wandkonsole L-bracket équerre en L</th> <th>Länge L length L longueur L</th> </tr> </thead> <tbody> <tr> <td>WB10</td> <td>240 mm</td> </tr> <tr> <td>WB11</td> <td>260 mm</td> </tr> <tr> <td>WB12</td> <td>280 mm</td> </tr> <tr> <td>WB13</td> <td>300 mm</td> </tr> <tr> <td>WB14</td> <td>320 mm</td> </tr> </tbody> </table>		L-Wandkonsole L-bracket équerre en L	Länge L length L longueur L	WB10	240 mm	WB11	260 mm	WB12	280 mm	WB13	300 mm	WB14	320 mm		
	L-Wandkonsole L-bracket équerre en L	Länge L length L longueur L														
	WB10	240 mm														
	WB11	260 mm														
	WB12	280 mm														
	WB13	300 mm														
	WB14	320 mm														









# Systema<sup>®</sup>

## Systema Pohl GmbH

Margarete-Steiff-Str. 6  
D-24558 Henstedt-Ulzburg  
Deutschland / Germany

Fon: +49 (0) 41 93 / 99 11-0  
Fax: +49 (0) 41 93 / 99 11-49

info@systema.systems  
www.systema.systems



Bitte besuchen Sie uns für weitere  
technische Informationen und  
eine Vielzahl von Referenzen  
im Internet: [www.systema.systems](http://www.systema.systems)

Ein Unternehmen der  
POHL-Gruppe

# Systema®

**ALWI:**

Unterkonstruktionen für waagrecht verlegte Aluminium-Wellprofiltafeln

# 02



**ALWI:**

holding tracks for horizontally fixed corrugated aluminium sheets

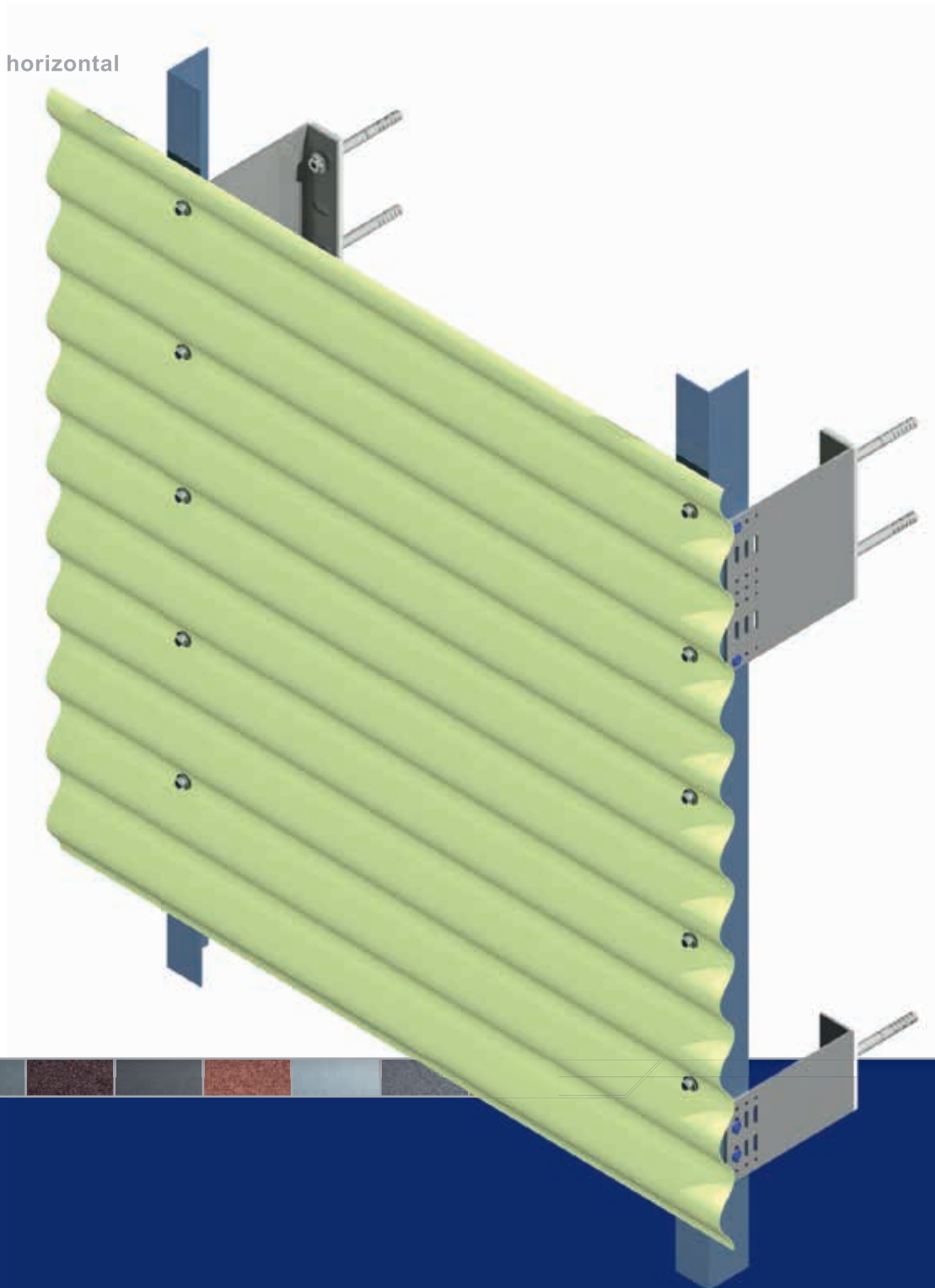
**ALWI:**

ossature pour montage horizontal de tôle ondulée

**ALWI:**  
Unterkonstruktionen für waagrecht verlegte  
Aluminium-Wellprofiltafeln

**ALWI:**  
holding tracks for horizontally fixed corrugated  
aluminium sheets

**ALWI:**  
ossature pour montage horizontal  
de tôle ondulée



## Inhaltsverzeichnis Contents Index

System: **ALWI**  
Unterkonstruktionen für waagrecht verlegte Aluminium-Wellprofiltafeln

System: **ALWI**  
holding tracks for horizontally fixed corrugated aluminium sheets

Système: **ALWI**  
ossature pour montage horizontal de tôle ondulée

Seite page page			
02.02	Schnittübersicht	summery of sections	vue d'ensemble
02.03	Isometrie	isometric view	dessin isométrique
02.04	Schnitt horizontal	section horizontal	coupe horizontale
02.05	Schnitt vertikal	section vertical	coupe verticale
02.06	Innenecke	internal corner	coin intérieur
02.07	Außenecke	external corner	coin extérieur
02.08	Fenstersturz	window lintel	linteau
02.09	Fensterlaibung	window recess	joue de fenêtre
02.10	Fensterbank	windowsill	bavette de fenêtre extérieure
02.11	Sockelabschluss	bottom closure	tôle basse de calfeutrement (raccord de socle)
02.12	Attikaabschluss	parapet	couvre-mur
02.13	Profilübersicht ALWI	profile list ALWI	ensemble de profil ALWI

**ALWI** für waagrecht  
verlegte Aluminium-  
Wellprofiltafeln

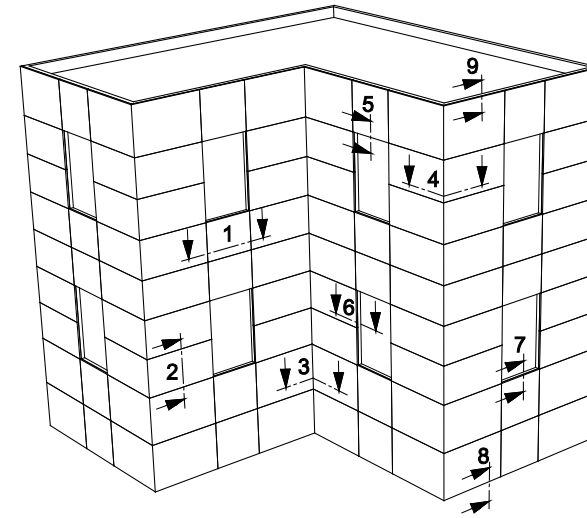
**ALWI** for horizontally  
fixed corrugated  
aluminium sheets

**ALWI** pour montage  
horizontal de tôle ondulée

Schnittübersicht

summery of sections

vue d'ensemble



Schnitt 1: horizontal  
Schnitt 2: vertikal  
Schnitt 3: Innenecke  
Schnitt 4: Außenecke  
Schnitt 5: Fenstersturz  
Schnitt 6: Fensterlaibung  
Schnitt 7: Fensterbank  
Schnitt 8: Sockelabschluss  
Schnitt 9: Attikaabschluss

section 1: horizontal  
section 2: vertical  
section 3: internal corner  
section 4: external corner  
section 5: window lintel  
section 6: window recess  
section 7: windowsill  
section 8: bottom closure  
section 9: parapet

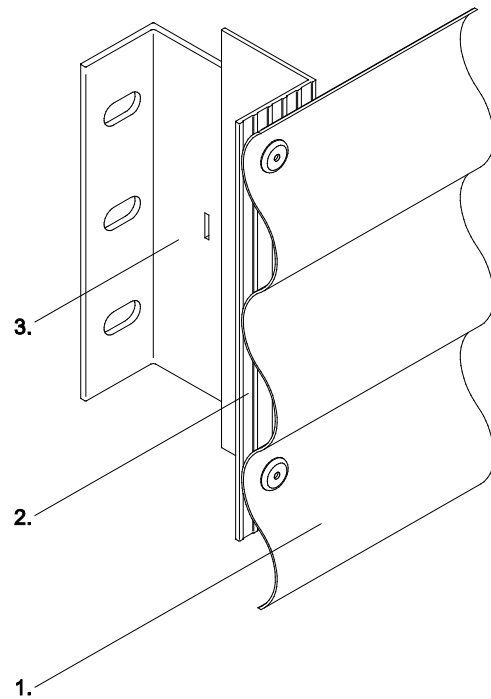
coupe 1: horizontale  
coupe 2: verticale  
coupe 3: coin intérieur  
coupe 4: coin extérieur  
coupe 5: linteau  
coupe 6: joue de fenêtre  
coupe 7: bavette de  
fenêtre extérieure  
coupe 8: tôle basse de  
calfeutrement (raccord de  
socle)  
coupe 9: couvre-mur

## ALWI

Unterkonstruktionen  
für waagrecht verlegte  
Aluminium-  
Wellprofiltafeln

holding tracks for  
horizontally fixed  
corrugated aluminium  
sheets

ossature pour montage  
horizontal de tôle ondulée

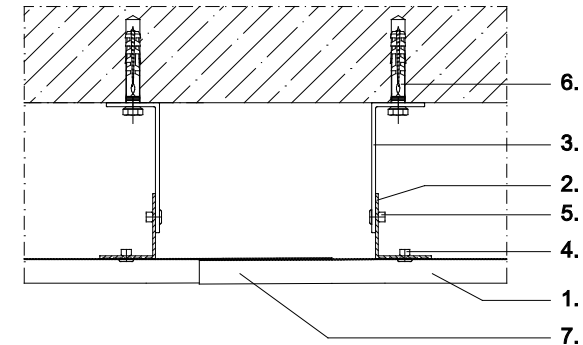
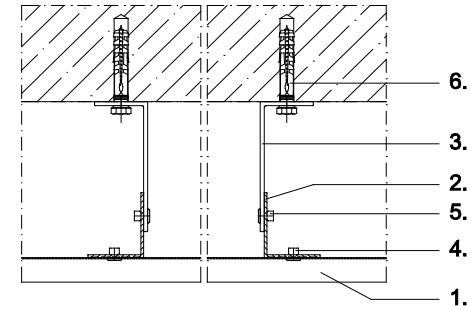


- |                              |                               |                            |
|------------------------------|-------------------------------|----------------------------|
| 1. Aluminium-Wellprofiltafel | 1. corrugated aluminium sheet | 1. tôle ondulée            |
| 2. senkrechtes Tragprofil    | 2. vertical holding track     | 2. profil support vertical |
| 3. Systema L-Wandkonsole     | 3. Systema L-bracket          | 3. équerre en L Systema    |

## Schnitt 1 horizontal

## section 1 horizontal

## coupe 1 horizontale

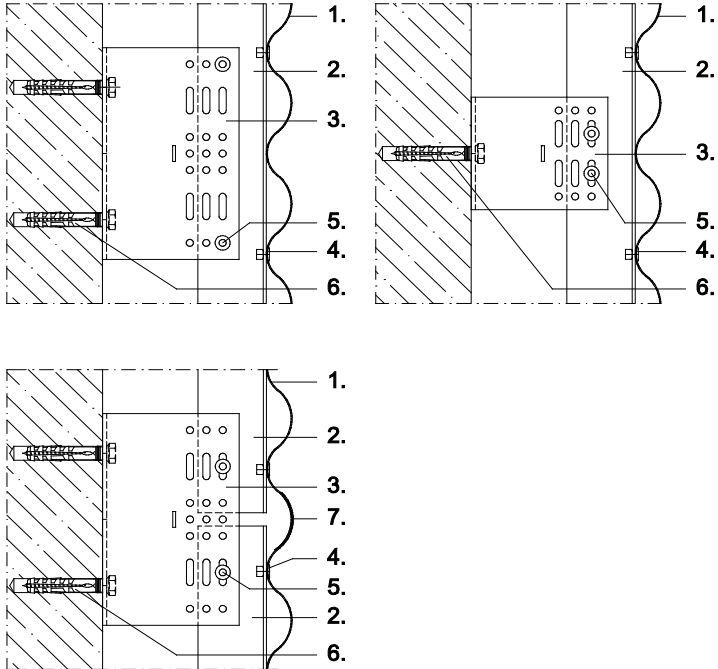


- |                              |                               |                                |
|------------------------------|-------------------------------|--------------------------------|
| 1. Aluminium-Wellprofiltafel | 1. corrugated aluminium sheet | 1. tôle ondulée                |
| 2. senkrechtes Tragprofil    | 2. vertical holding track     | 2. profil support vertical     |
| 3. Systema L-Wandkonsole     | 3. Systema L-bracket          | 3. équerre en L Systema        |
| 4. Befestigungsniet          | 4. fixing rivet               | 4. rivet de fixation           |
| 5. Verbindungsniet           | 5. connecting rivet           | 5. jonction                    |
| 6. Verankerung               | 6. fixing                     | 6. ancrage                     |
| 7. Stoß mit Überlappung      | 7. overlapping butt joint     | 7. assemblage par recouvrement |

**Schnitt 2**  
vertikal

**section 2**  
vertical

**coupe 2**  
verticale

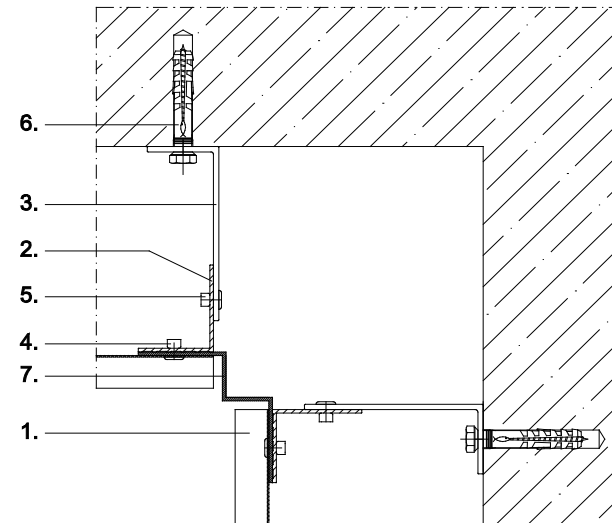


- |                              |                               |                                |
|------------------------------|-------------------------------|--------------------------------|
| 1. Aluminium-Wellprofiltafel | 1. corrugated aluminium sheet | 1. tôle ondulée                |
| 2. senkrechtes Tragprofil    | 2. vertical holding track     | 2. profil support vertical     |
| 3. Systema L-Wandkonsole     | 3. Systema L-bracket          | 3. équerre en L Systema        |
| 4. Befestigungsniel          | 4. fixing rivet               | 4. rivet de fixation           |
| 5. Verbindungsniel           | 5. connecting rivet           | 5. jonction                    |
| 6. Verankerung               | 6. fixing                     | 6. ancrage                     |
| 7. Stoß mit Überlappung      | 7. overlapping butt joint     | 7. assemblage par recouvrement |

**Schnitt 3**  
Innenecke

**section 3**  
internal corner

**coupe 3**  
coin intérieur

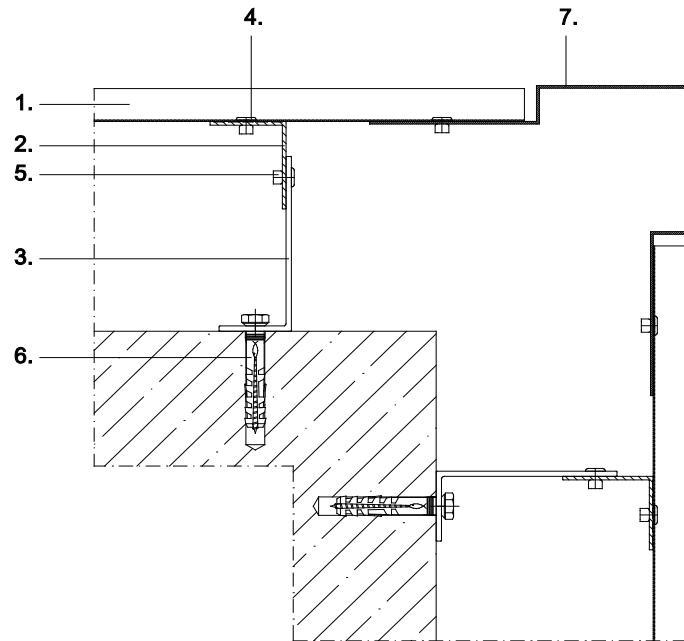


- |                              |                               |                            |
|------------------------------|-------------------------------|----------------------------|
| 1. Aluminium-Wellprofiltafel | 1. corrugated aluminium sheet | 1. tôle ondulée            |
| 2. senkrechtes Tragprofil    | 2. vertical holding track     | 2. profil support vertical |
| 3. Systema L-Wandkonsole     | 3. Systema L-bracket          | 3. équerre en L Systema    |
| 4. Befestigungsniel          | 4. fixing rivet               | 4. rivet de fixation       |
| 5. Verbindungsniel           | 5. connecting rivet           | 5. jonction                |
| 6. Verankerung               | 6. fixing                     | 6. ancrage                 |

**Schnitt 4**  
Außenecke

**section 4**  
external corner

**coupe 4**  
coin extérieur

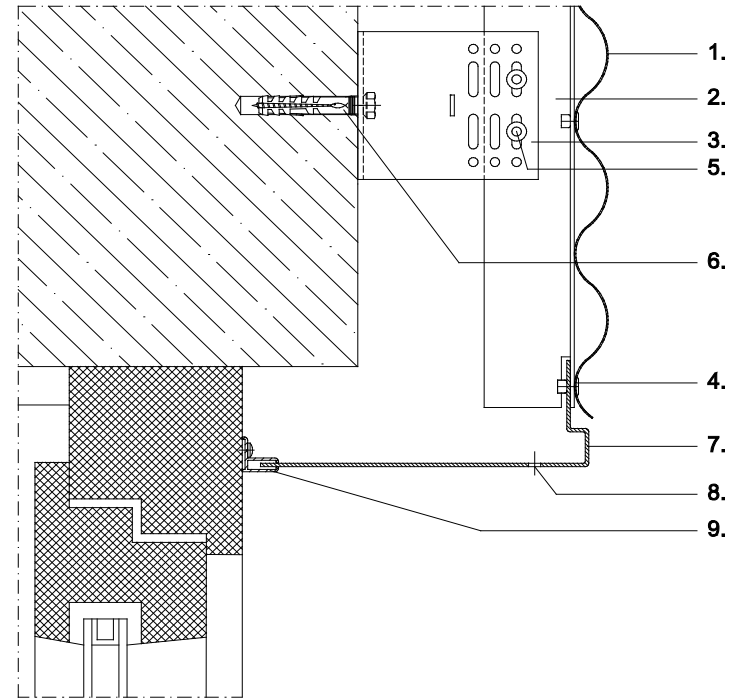


- |                              |                               |                            |
|------------------------------|-------------------------------|----------------------------|
| 1. Aluminium-Wellprofiltafel | 1. corrugated aluminium sheet | 1. tôle ondulée            |
| 2. senkrechtes Tragprofil    | 2. vertical holding track     | 2. profil support vertical |
| 3. Systema L-Wandkonsole     | 3. Systema L-bracket          | 3. équerre en L Systema    |
| 4. Befestigungsniet          | 4. fixing rivet               | 4. rivet de fixation       |
| 5. Verbindungsniet           | 5. connecting rivet           | 5. jonction                |
| 6. Verankerung               | 6. fixing                     | 6. ancrage                 |
| 7. Außeneckprofil            | 7. external corner profile    | 7. coin extérieur          |

**Schnitt 5**  
Fenstersturz

**section 5**  
window lintel

**coupe 5**  
linteau

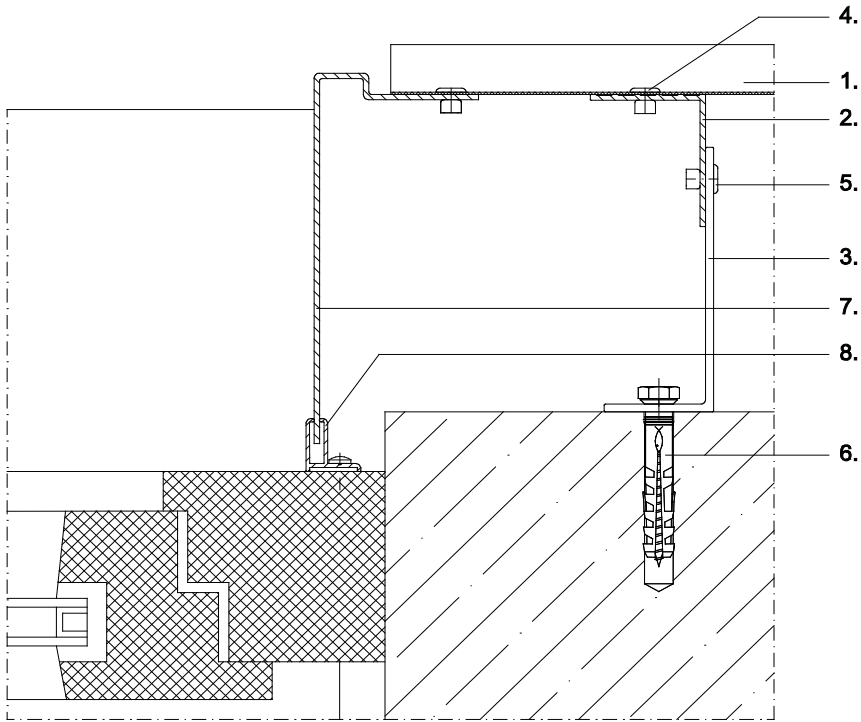


- |                              |                               |                                   |
|------------------------------|-------------------------------|-----------------------------------|
| 1. Aluminium-Wellprofiltafel | 1. corrugated aluminium sheet | 1. tôle ondulée                   |
| 2. senkrechtes Tragprofil    | 2. vertical holding track     | 2. profil support vertical        |
| 3. Systema L-Wandkonsole     | 3. Systema L-bracket          | 3. équerre en L Systema           |
| 4. Befestigungsniet          | 4. fixing rivet               | 4. rivet de fixation              |
| 5. Verbindungsniet           | 5. connecting rivet           | 5. jonction                       |
| 6. Verankerung               | 6. fixing                     | 6. ancrage                        |
| 7. Fensterzarge              | 7. window frame               | 7. châssis                        |
| 8. Belüftungsöffnung         | 8. ventilation opening        | 8. trou pour ventilation          |
| 9. Systema Stimmgabelprofil  | 9. Systema F-profile          | 9. profil F Systema<br>(diapason) |

**Schnitt 6**  
Fensterlaibung

**section 6**  
window recess

**coupe 6**  
joue de fenêtre

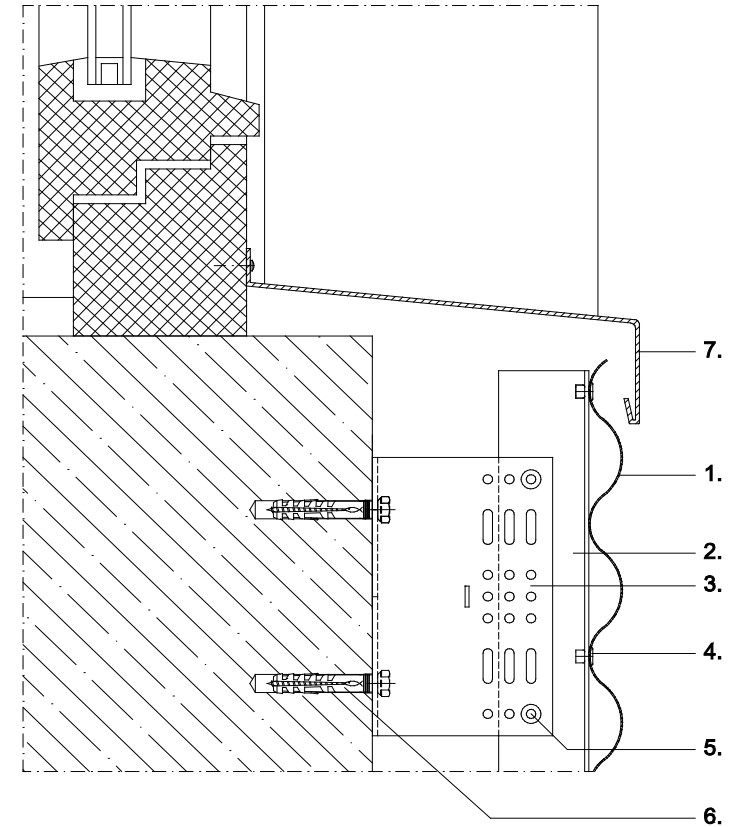


- |                              |                               |                                |
|------------------------------|-------------------------------|--------------------------------|
| 1. Aluminium-Wellprofiltafel | 1. corrugated aluminium sheet | 1. tôle ondulée                |
| 2. senkrechtes Tragprofil    | 2. vertical holding track     | 2. profil support vertical     |
| 3. Systema L-Wandkonsole     | 3. Systema L-bracket          | 3. équerre en L Systema        |
| 4. Befestigungsniel          | 4. fixing rivet               | 4. rivet de fixation           |
| 5. Verbindungsniel           | 5. connecting rivet           | 5. jonction                    |
| 6. Verankerung               | 6. fixing                     | 6. ancrage                     |
| 7. Fensterzarge              | 7. window frame               | 7. châssis                     |
| 8. Systema Stimmgabelprofil  | 8. Systema F-profile          | 8. profil F Systema (diapason) |

**Schnitt 7**  
Fensterbank

**section 7**  
windowsill

**coupe 7**  
bavette de fenêtre  
extérieure



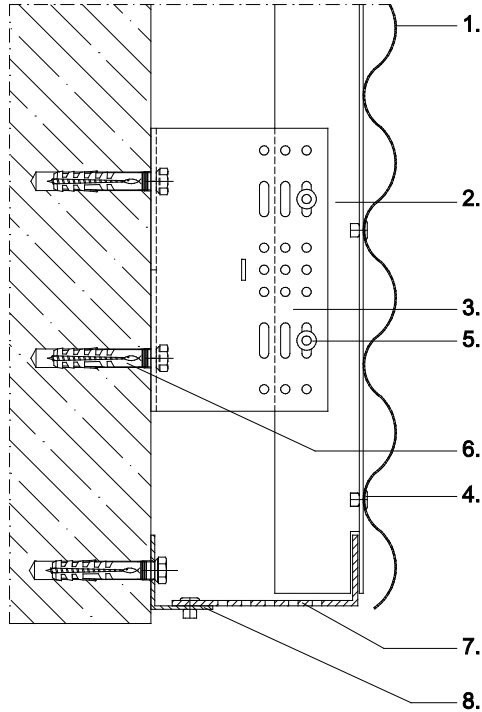
- |                              |                               |                            |
|------------------------------|-------------------------------|----------------------------|
| 1. Aluminium-Wellprofiltafel | 1. corrugated aluminium sheet | 1. tôle ondulée            |
| 2. senkrechtes Tragprofil    | 2. vertical holding track     | 2. profil support vertical |
| 3. Systema L-Wandkonsole     | 3. Systema L-bracket          | 3. équerre en L Systema    |
| 4. Befestigungsniel          | 4. fixing rivet               | 4. rivet de fixation       |
| 5. Verbindungsniel           | 5. connecting rivet           | 5. jonction                |
| 6. Verankerung               | 6. fixing                     | 6. ancrage                 |
| 7. Systema Fensterbank       | 7. Systema windowsill         | 7. bavette Systema         |



**Schnitt 8**  
**Sockelabschluss**

**section 8**  
**bottom closure**

**coupe 8**  
**tôle basse de**  
**cafeutrement**  
**(raccord de socle)**

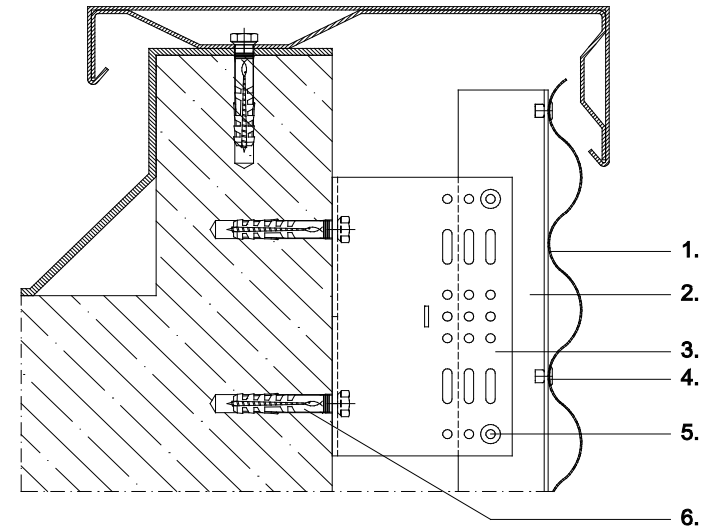


- |                                  |                                       |                                   |
|----------------------------------|---------------------------------------|-----------------------------------|
| 1. Aluminium-Wellprofiltafel     | 1. corrugated aluminium sheet         | 1. tôle ondulée                   |
| 2. senkrechtes Tragprofil        | 2. vertical holding track             | 2. profil support vertical        |
| 3. Systema L-Wandkonsole         | 3. Systema L-bracket                  | 3. équerre en L Systema           |
| 4. Befestigungsniel              | 4. fixing rivet                       | 4. rivet de fixation              |
| 5. Verbindungsniel               | 5. connecting rivet                   | 5. jonction                       |
| 6. Verankerung                   | 6. fixing                             | 6. ancrage                        |
| 7. Abschlusswinkel mit Belüftung | 7. base angle with ventilation system | 7. angle avec trou de ventilation |
| 8. Wandwinkel                    | 8. wall angle                         | 8. angle                          |

**Schnitt 9**  
**Attikaabschluss**

**section 9**  
**parapet**

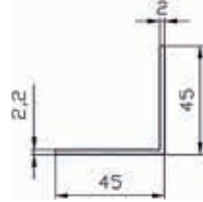

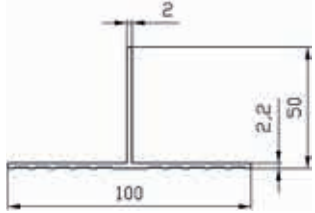
**coupe 9**  
**couvre-mur**

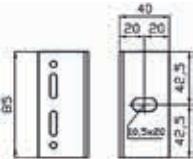
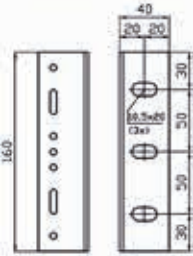
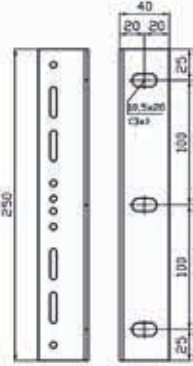



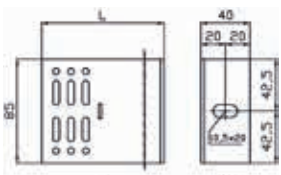
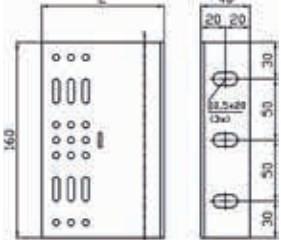
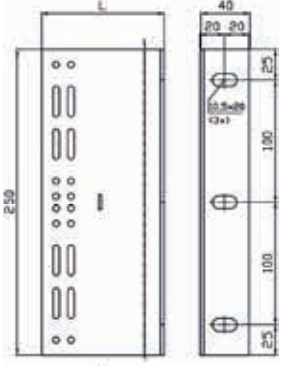

- |                           |                           |                            |
|---------------------------|---------------------------|----------------------------|
| 1. Fassadenbekleidung     | 1. cladding panel         | 1. revêtement de façade    |
| 2. senkrechtes Tragprofil | 2. vertical holding track | 2. profil support vertical |
| 3. Systema L-Wandkonsole  | 3. Systema L-bracket      | 3. équerre en L Systema    |
| 4. Befestigungsniel       | 4. fixing rivet           | 4. rivet de fixation       |
| 5. Verbindungsniel        | 5. connecting rivet       | 5. jonction                |
| 6. Verankerung            | 6. fixing                 | 6. ancrage                 |

Inhaltsverzeichnis Profilübersicht ALWI für Aluminium-Wellprofiltafeln  
 Contents profile list ALWI for corrugated aluminium sheets  
 Index ensemble de profil ALWI pour tôle ondulée

Seite page page	Profile	profiles	profilés
	<b>vertikale Tragprofile</b>	<b>vertical holding tracks</b>	<b>rails porteurs verticaux</b>
02.14	Winkelprofil 45/45 Wanddicke 2mm prof. Winkelprofil 42/50 Typ I prof. T-Profil 100/50 prof.	L-profile 45/45 wall thickness 2mm prof. L-profile 42/50 Typ I prof. T-profile 100/50 prof.	profil L 45/45 épaisseur du mur 2mm prof. profil L 42/50 Typ I prof. profil T 100/50 prof.
	<b>L-Wandkonsolen</b>	<b>L-brackets</b>	<b>équerres en L</b>
02.15	WB 0 - 85/160/250mm	WB 0 - 85/160/250mm	WB 0 - 85/160/250mm
02.16	WB 1-6 - 85/160/250mm	WB 1-6 - 85/160/250mm	WB 1-6 - 85/160/250mm
02.17	WB 7-9,5 - 85/160/250	WB 7-9,5 - 85/160/250	WB 7-9,5 - 85/160/250
02.18	WB 10-14 - 85/160/250mm	WB 10-14 - 85/160/250mm	WB 10-14 - 85/160/250mm

Profiltyp profile type type de profil	Länge (mm) length (mm) longueur (mm)	Material material matériel	Einzelpreis unit price prix unitaire
 <p>Winkelprofil 45/45 Wanddicke 2mm prof. L-profile 45/45 wall thickness 2mm prof. profile L 45/45 épaisseur du mur 2mm prof.</p>	5600 6000	EN AW 6063 T66	
 <p>Winkelprofil 42/50 Typ I prof. L-profile 42/50 Typ I prof. profile L 42/50 Typ I prof.</p>	3000 6000	EN AW 6063 T66	
 <p>T-Profil 100/50 prof. T-profile 100/50 prof. profile T 100/50 prof.</p>	3000 5600 6000		

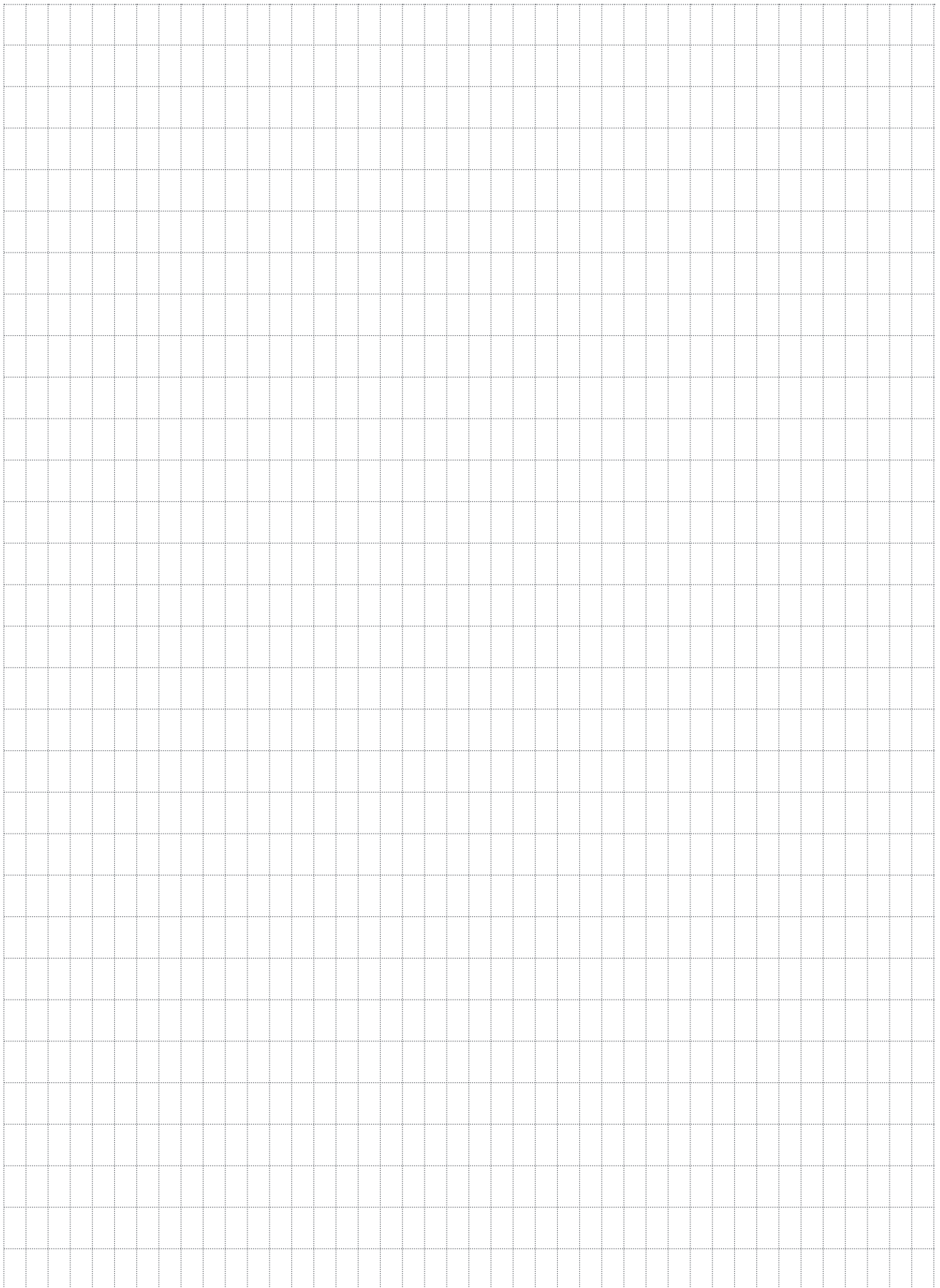
Profiltyp profile type type de profil	Länge (mm) length (mm) longueur (mm)	Material material matériau	Einzelpreis unit price prix unitaire
	WB0 40/40/3-85	EN AW 6063 T66	
	WB0 40/40/3-160	EN AW 6063 T66	
	WB0 40/40/3-250	EN AW 6063 T66	
			
WB0 40/40/3 - 85/160/250mm			

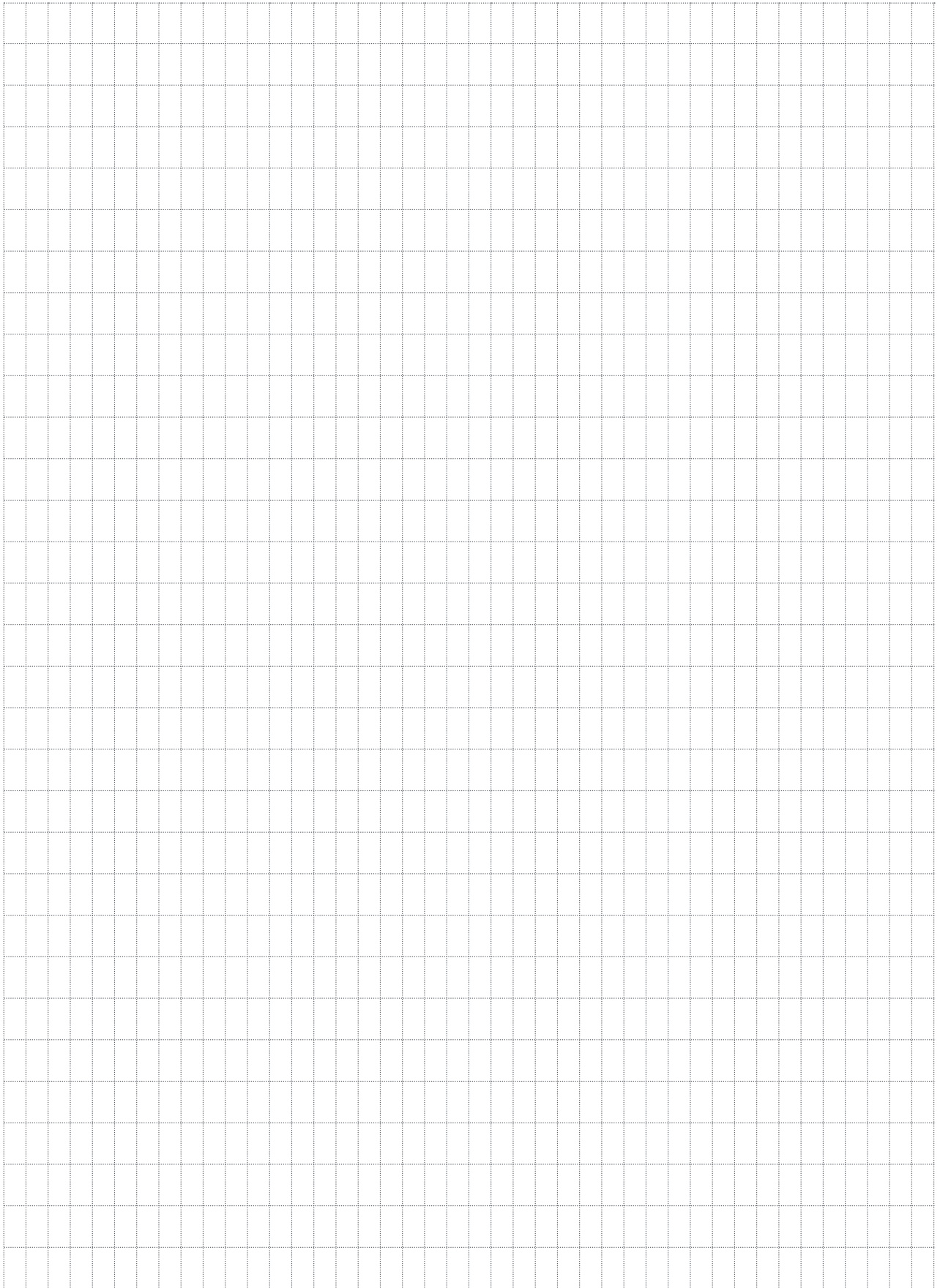
Profiltyp profile type type de profil	Länge (mm) length (mm) longueur (mm)	Material material matériau	Einzelpreis unit price prix unitaire
	WB1 40/60/3-85 WB2 40/80/3-85 WB3 40/100/3-85 WB4 40/120/3-85 WB5 40/140/3-85 WB6 40/160/3-85	EN AW 6063 T66	
	WB1 40/60/3-160 WB2 40/80/3-160 WB3 40/100/3-160 WB4 40/120/3-160 WB5 40/140/3-160 WB6 40/160/3-160	EN AW 6063 T66	
	WB1 40/60/3-250 WB2 40/80/3-250 WB3 40/100/3-250 WB4 40/120/3-250 WB5 40/140/3-250 WB6 40/160/3-250	EN AW 6063 T66	
			
WB 1-6 - 85/160/250mm			

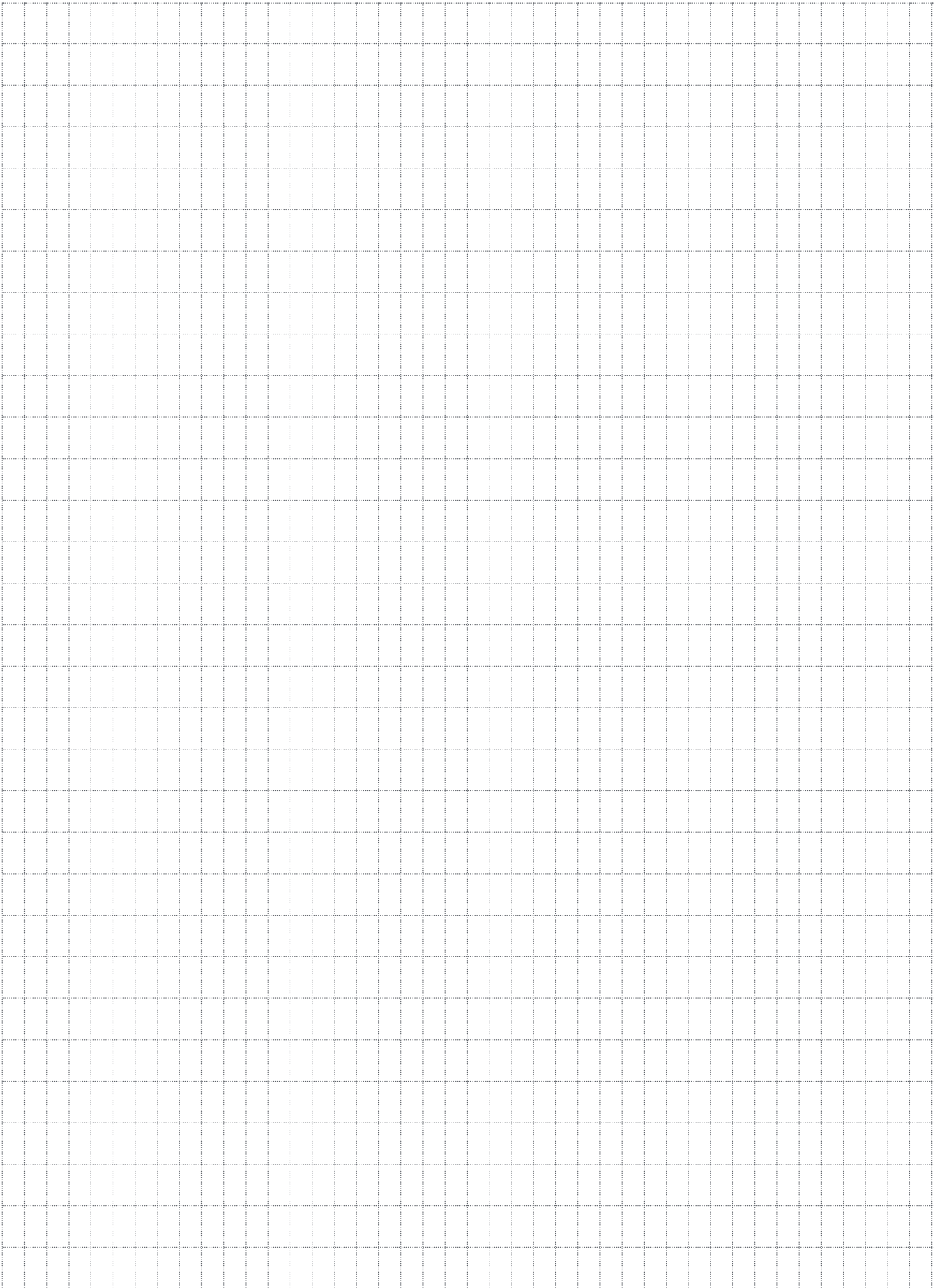
L-Wandkonsole L-bracket équerre en L	Länge L length L longueur L
WB1	60 mm
WB2	80 mm
WB3	100 mm
WB4	120 mm
WB5	140 mm
WB6	160 mm

Profiltyp profile type type de profil	Länge (mm) length (mm) longueur (mm)	Material material matériau	Einzelpreis unit price prix unitaire												
<p>WB7-9,5 - 85/160/250mm</p>	WB7 40/180/4/3-85 WB8 40/200/4/3-85 WB8,5 40/210/4/3-85 WB9 40/220/4/3-85 WB9,5 40/230/4/3-85	EN AW 6063 T66													
	WB7 40/180/4/3-160 WB8 40/200/4/3-160 WB8,5 40/210/4/3-160 WB9 40/220/4/3-160 WB9,5 40/230/4/3-160	EN AW 6063 T66													
	WB7 40/180/4/3-250 WB8 40/200/4/3-250 WB8,5 40/210/4/3-250 WB9 40/220/4/3-250 WB9,5 40/230/4/3-250	EN AW 6063 T66													
	<table border="1"> <thead> <tr> <th>L-Wandkonsole L-bracket équerre en L</th> <th>Länge L length L longueur L</th> </tr> </thead> <tbody> <tr> <td>WB7</td> <td>180 mm</td> </tr> <tr> <td>WB8</td> <td>200 mm</td> </tr> <tr> <td>WB8,5</td> <td>210 mm</td> </tr> <tr> <td>WB9</td> <td>220 mm</td> </tr> <tr> <td>WB9,5</td> <td>230 mm</td> </tr> </tbody> </table>	L-Wandkonsole L-bracket équerre en L	Länge L length L longueur L	WB7	180 mm	WB8	200 mm	WB8,5	210 mm	WB9	220 mm	WB9,5	230 mm		
	L-Wandkonsole L-bracket équerre en L	Länge L length L longueur L													
	WB7	180 mm													
	WB8	200 mm													
	WB8,5	210 mm													
	WB9	220 mm													
	WB9,5	230 mm													

Profiltyp profile type type de profil	Länge (mm) length (mm) longueur (mm)	Material material matériau	Einzelpreis unit price prix unitaire												
<p>WB10-14 - 85/160/250mm</p>	WB10 43/240/4/3-85 WB11 43/260/4/3-85 WB12 43/280/4/3-85 WB13 43/300/4/3-85 WB14 43/320/4/3-85	EN AW 6063 T66													
	WB10 43/240/4/3-160 WB11 43/260/4/3-160 WB12 43/280/4/3-160 WB13 43/300/4/3-160 WB14 43/320/4/3-160	EN AW 6063 T66													
	WB10 43/240/4/3-250 WB11 43/260/4/3-250 WB12 43/280/4/3-250 WB13 43/300/4/3-250 WB14 43/320/4/3-250	EN AW 6063 T66													
	<table border="1"> <thead> <tr> <th>L-Wandkonsole L-bracket équerre en L</th> <th>Länge L length L longueur L</th> </tr> </thead> <tbody> <tr> <td>WB10</td> <td>240 mm</td> </tr> <tr> <td>WB11</td> <td>260 mm</td> </tr> <tr> <td>WB12</td> <td>280 mm</td> </tr> <tr> <td>WB13</td> <td>300 mm</td> </tr> <tr> <td>WB14</td> <td>320 mm</td> </tr> </tbody> </table>	L-Wandkonsole L-bracket équerre en L	Länge L length L longueur L	WB10	240 mm	WB11	260 mm	WB12	280 mm	WB13	300 mm	WB14	320 mm		
	L-Wandkonsole L-bracket équerre en L	Länge L length L longueur L													
	WB10	240 mm													
	WB11	260 mm													
	WB12	280 mm													
	WB13	300 mm													
	WB14	320 mm													











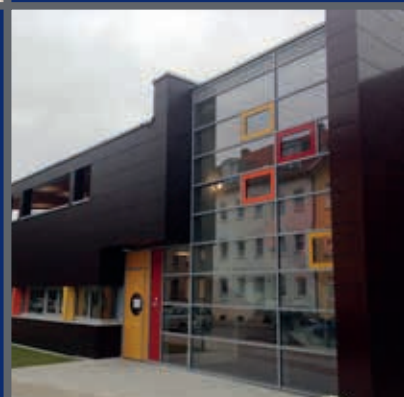
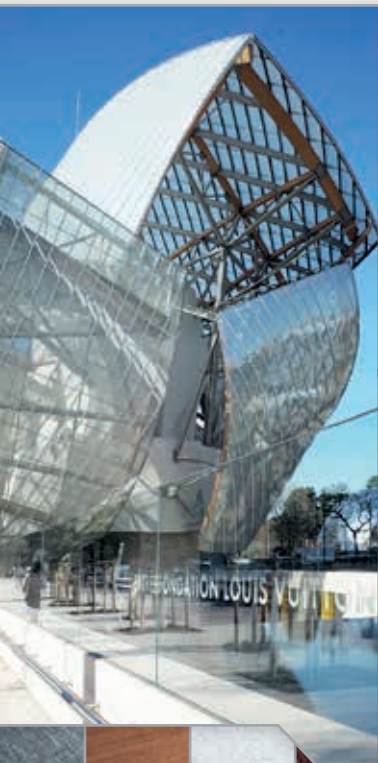
# Systema<sup>®</sup>

## Systema Pohl GmbH

Margarete-Steiff-Str. 6  
D-24558 Henstedt-Ulzburg  
Deutschland / Germany

Fon: +49 (0) 41 93 / 99 11-0  
Fax: +49 (0) 41 93 / 99 11-49

info@systema.systems  
www.systema.systems



Bitte besuchen Sie uns für weitere  
technische Informationen und  
eine Vielzahl von Referenzen  
im Internet: [www.systema.systems](http://www.systema.systems)

Ein Unternehmen der  
POHL-Gruppe

# Systema®

**ALWI:**

**Unterkonstruktionen für Fassadenplatten aus Verbundmaterial**

# 07



**ALWI:**

holding tracks for wall panels of composite material

**ALWI:**

ossature pour des plaques façade du matériel composé

ALWI:

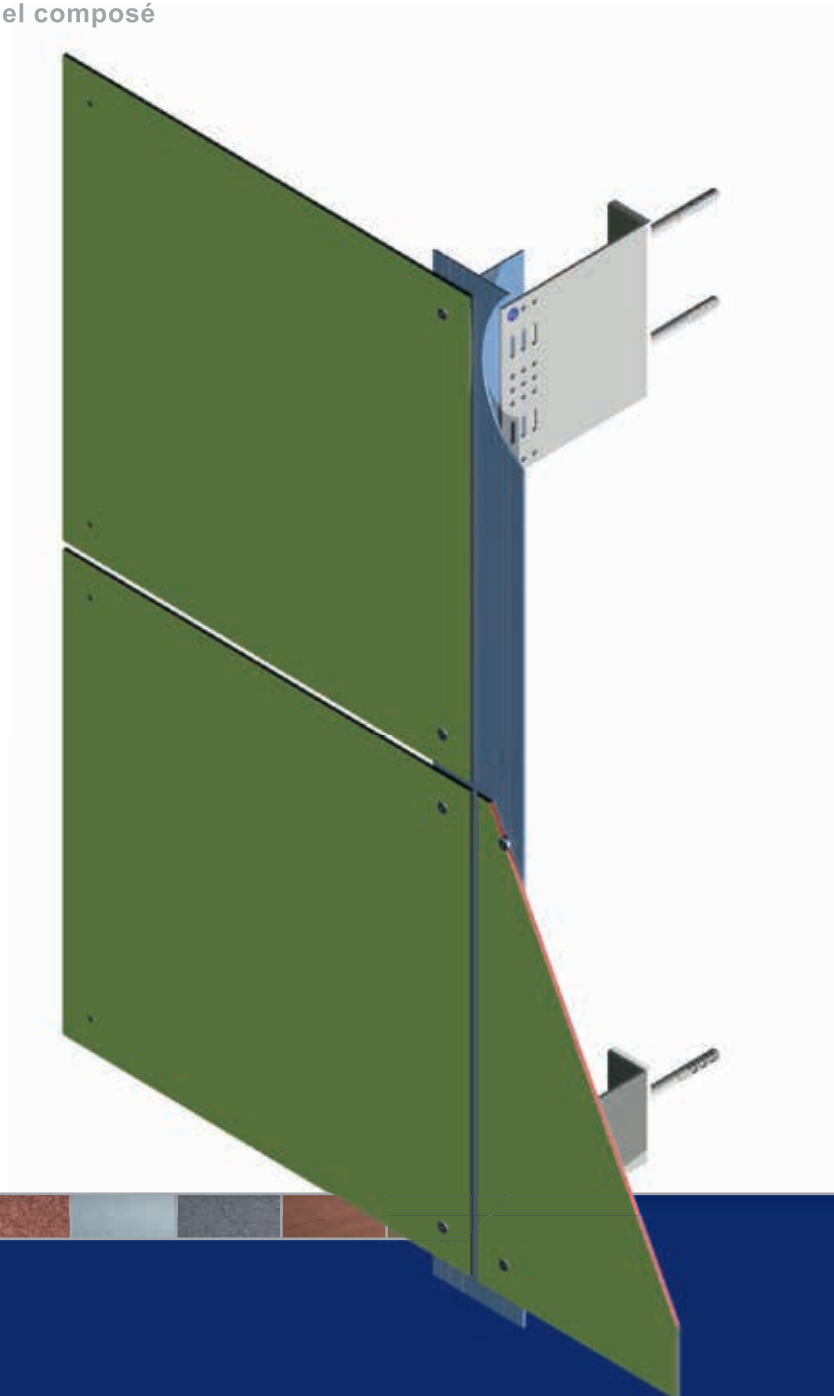
Unterkonstruktionen für Fassadenplatten aus Verbundmaterial

ALWI:

holding tracks for wall panels of composite material

ALWI:

ossature pour des plaques façade du matériel composé



System: **ALWI**  
**Unterkonstruktionen für Fassadenplatten aus Verbundmaterial**

System: **ALWI**  
**holding tracks for wall panels of composite material**

Système: **ALWI**  
**ossature pour des plaques façade du matériel composé**

Seite page page			
07.02	Schnittübersicht	summery of sections	vue d'ensemble
07.03	Isometrie	isometric view	dessin isométrique
07.04	Schnitt horizontal	section horizontal	coupe horizontale
07.05	Schnitt horizontal Ecoclad	section horizontal Ecoclad	coupe horizontale Ecoclad
07.06	Schnitt vertikal	section vertical	coupe verticale
07.07	Schnitt vertikal Ecoclad	section vertical Ecoclad	coupe verticale Ecoclad
07.08	Innenecke	internal corner	coin intérieur
07.09	Außenecke	external corner	coin extérieur
07.10	Fenstersturz	window lintel	linteau
07.11	Jalousienkasten	shutter case	carter persienne
07.12	Fensterlaibung	window recess	joue de fenêtre
07.13	Fensterbank	windowsill	bavette de fenêtre extérieure
07.14	Sockelabschluss	bottom closure	tôle basse de calfeutrement (raccord de socle)
07.15	Attikaabschluss	parapet	couvre-mur
07.16	Profilübersicht ALWI für Fassadenplatten aus Verbundmaterial	profile list ALWI for wall panels of composite material	ensemble de profil ALWI pour des plaques façade du matériel composé

**ALWI** für  
Fassadenplatten aus  
Verbundmaterial

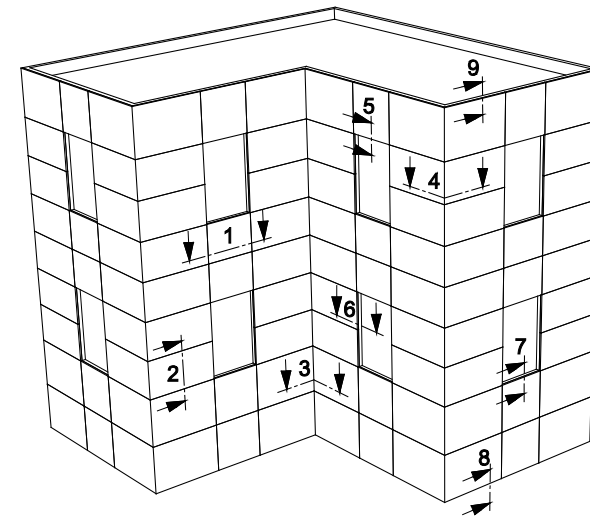
**ALWI** for wall panels of  
composite material

**ALWI** pour des plaques  
façade du matériel  
composé

Schnittübersicht

summery of sections

vue d'ensemble



Schnitt 1: horizontal  
Schnitt 2: vertikal  
Schnitt 3: Innenecke  
Schnitt 4: Außenecke  
Schnitt 5: Fenstersturz  
Schnitt 6: Fensterlaibung  
Schnitt 7: Fensterbank  
Schnitt 8: Sockelabschluss  
Schnitt 9: Attikaabschluss

section 1: horizontal  
section 2: vertical  
section 3: internal corner  
section 4: external corner  
section 5: window lintel  
section 6: window recess  
section 7: windowsill  
section 8: bottom closure  
section 9: parapet

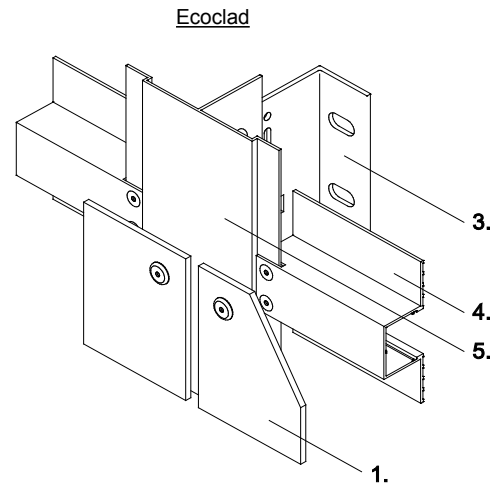
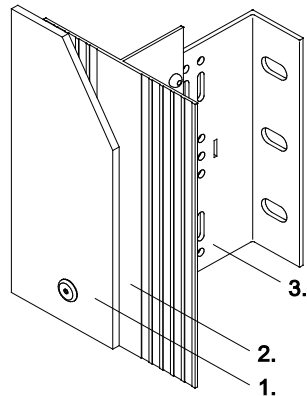
coupe 1: horizontale  
coupe 2: verticale  
coupe 3: coin intérieur  
coupe 4: coin extérieur  
coupe 5: linteau  
coupe 6: joue de fenêtre  
coupe 7: bavette de  
fenêtre extérieure  
coupe 8: tôle basse de  
calfeutrement (raccord de  
socle)  
coupe 9: couvre-mur

## ALWI

Unterkonstruktionen für  
Fassadenplatten aus  
Verbundmaterial

holding tracks for wall  
panels of composite  
material

ossature pour des plaques  
façade du matériel  
composé



1. Fassadenbekleidung
2. senkrechtes Tragprofil
3. Systema L-Wandkonsole
4. Hutprofil
5. senkrechtes Tragprofil  
T-Profil Ecoclad 120/50

1. cladding panel
2. vertical holding track
3. Systema L-bracket
4. top hat profile
5. vertical holding track  
T-profile Ecoclad 120/50

1. revêtement de façade
2. profil support vertical
3. équerre en L Systema
4. profil oméga
5. profil support vertical  
profil T Ecoclad 120/50

## Schnitt 1 horizontal

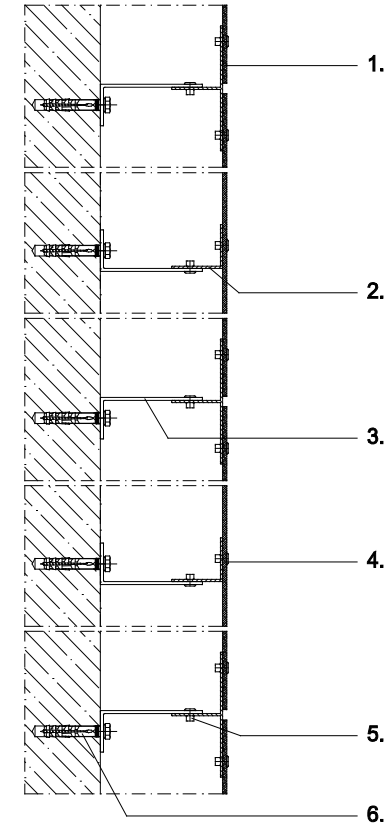
Anordnung der  
Wandkonsolen

## section 1 horizontal

placement of brackets

## coupe 1 horizontale

règlement des équerres



1. Fassadenbekleidung
2. senkrechtes Tragprofil
3. Systema L-Wandkonsole
4. Befestigungsniel
5. Verbindungsniel
6. Verankerung

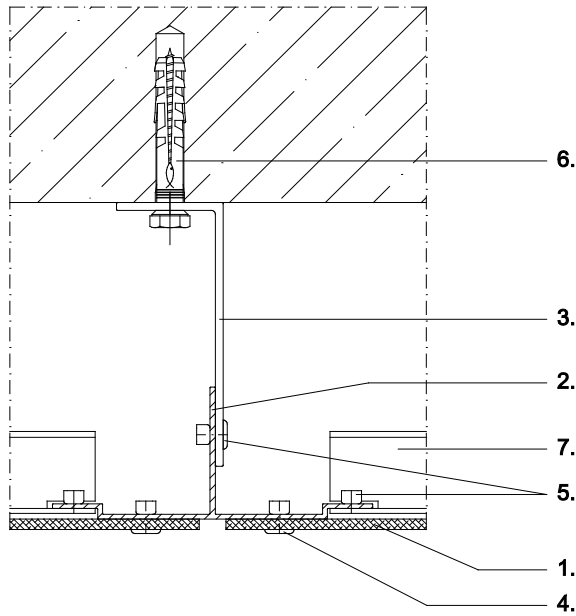
1. cladding panel
2. vertical holding track
3. Systema L-bracket
4. fixing rivet
5. connecting rivet
6. fixing

1. revêtement de façade
2. profil support vertical
3. équerre en L Systema
4. rivet de fixation
5. jonction
6. ancrage

**Schnitt 1  
horizontal  
Ecoclad**

**section 1  
horizontal  
Ecoclad**

**coupe 1  
horizontale  
Ecoclad**



1. Fassadenbekleidung
2. senkrechtcs Tragprofil  
T-Profil Ecoclad 120/50
3. Systema L-Wandkonsole
4. Befestigungsriev
5. Verbindungsriev
6. Verankerung
7. Hutprofil

1. cladding panel
2. vertical holding track  
T-profile Ecoclad 120/50
3. Systema L-bracket
4. fixing rivet
5. connecting rivet
6. fixing
7. top hat profile

1. revêtement de façade
2. profil support vertical  
profil T Ecoclad 120/50
3. équerre en L Systema
4. rivet de fixation
5. jonction
6. ancrage
7. profil oméga

**Schnitt 2  
vertikal**

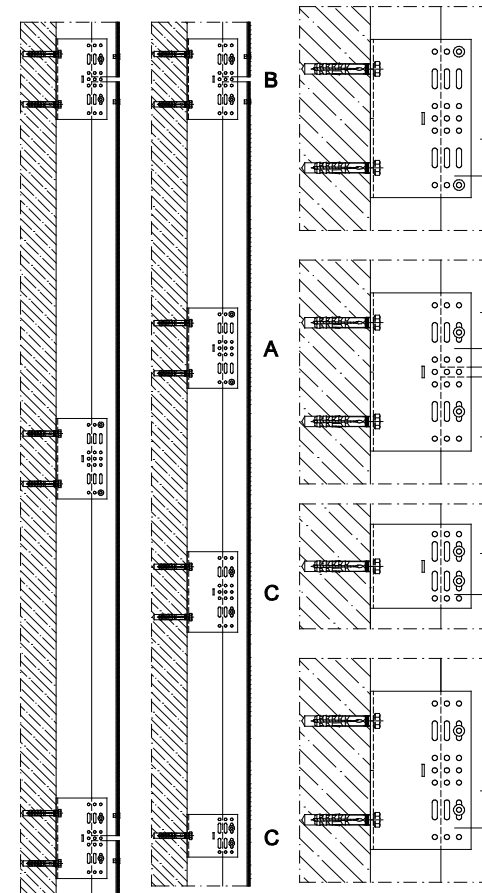
**section 2  
vertical**

**coupe 2  
verticale**

Fest- und Gleitpunkte

fixed and floating points

point fixe et glissant



- A Festpunkt  
Aufnahme des Eigengewichts durch Nieten im Rundloch
- A fixed point  
dead weight is borne by rivets in round hole
- A point fixe  
réception du propre poids rivetage dans le trou rond
- B Gleitstoßpunkt  
Tragprofilstoß in der horizontalen Plattenfuge, Vernietung in Langlöchern
- B floating point on the joint  
profile edge in horizontal panel joint, riveting in long holes
- B point glissant au joint  
rivetage dans le trou oblong
- C Gleitpunkt  
Vernietung in Langlöchern, ermöglicht Längenausdehnung  
Vernietung in den Langlöchern mit Nietdistanzlehre
- C floating point  
riveting in long holes allows expansion
- C point glissant  
rivetage dans le trou oblong permet l'extension de la façade  
rivetage avec rondelle dans le trou oblong

1. Fassadenbekleidung
2. senkrechtcs Tragprofil
3. Systema L-Wandkonsole

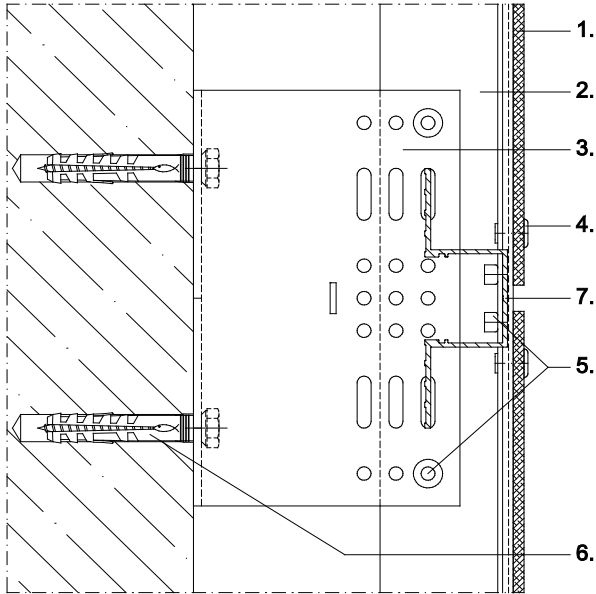
1. cladding panel
2. vertical holding track
3. Systema L-bracket

1. revêtement de façade
2. profil support vertical
3. équerre en L Systema

**Schnitt 2**  
vertikal  
Ecoclad

**section 2**  
vertical  
Ecoclad

**coupe 2**  
verticale  
Ecoclad



1. Fassadenbekleidung
2. senkrechtes Tragprofil  
T-Profil Ecoclad 120/50
3. Systema L-Wandkonsole
4. Befestigungsniel
5. Verbindungsniel
6. Verankerung
7. Hutprofil

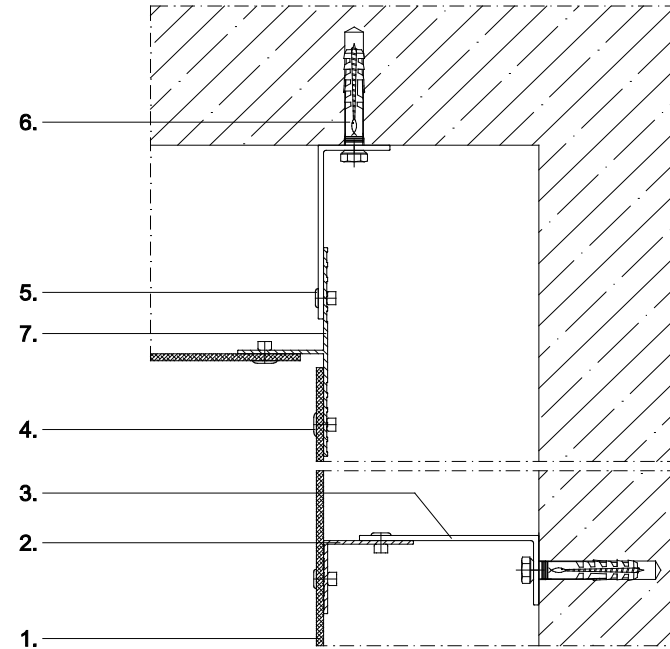
1. cladding panel
2. vertical holding track  
T-profile Ecoclad 120/50
3. Systema L-bracket
4. fixing rivet
5. connecting rivet
6. fixing
7. top hat profile

1. revêtement de façade
2. profil support vertical  
profil T Ecoclad 120/50
3. équerre en L Systema
4. rivet de fixation
5. jonction
6. ancrage
7. profil oméga

**Schnitt 3**  
Innenecke

**section 3**  
internal corner

**coupe 3**  
coin intérieur



1. Fassadenbekleidung
2. senkrechtes Tragprofil
3. Systema L-Wandkonsole
4. Befestigungsniel
5. Verbindungsniel
6. Verankerung
7. T-Profil 100/50 prof.

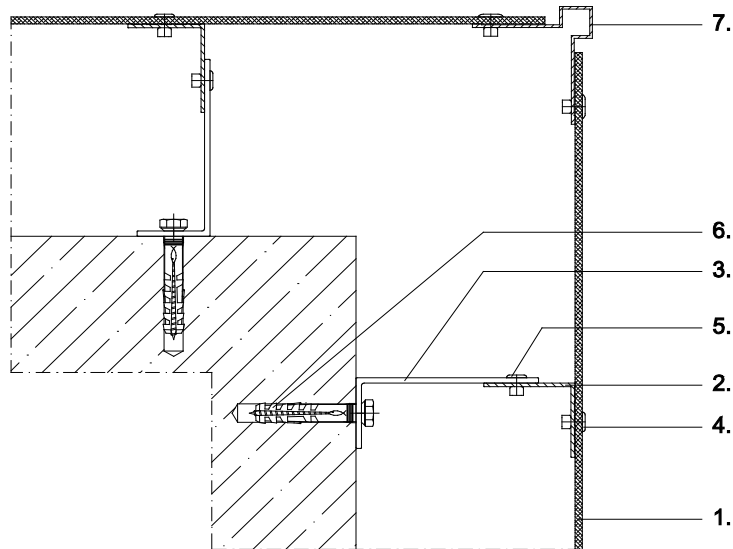
1. cladding panel
2. vertical holding track
3. Systema L-bracket
4. fixing rivet
5. connecting rivet
6. fixing
7. T-profile 100/50 prof.

1. revêtement de façade
2. profil support vertical
3. équerre en L Systema
4. rivet de fixation
5. jonction
6. ancrage
7. profil T 100/50 prof.

**Schnitt 4**  
Außenecke

**section 4**  
external corner

**coupe 4**  
coin extérieur



1. Fassadenbekleidung
2. senkrechtes Tragprofil
3. Systema L-Wandkonsole
4. Befestigungsniel
5. Verbindungsniel
6. Verankerung
7. Außenecke, eckig

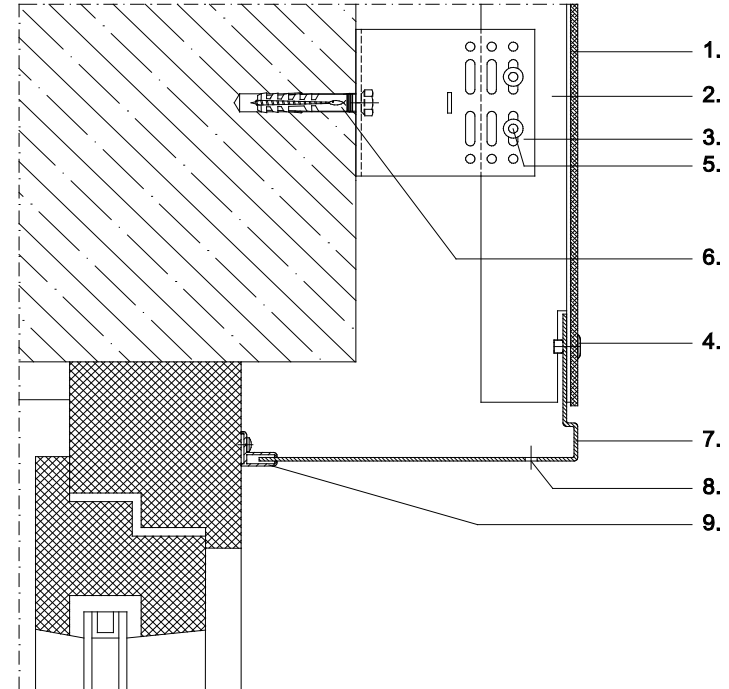
1. cladding panel
2. vertical holding track
3. Systema L-bracket
4. fixing rivet
5. connecting rivet
6. fixing
7. outward corner profile squared

1. revêtement de façade
2. profil support vertical
3. équerre en L Systema
4. rivet de fixation
5. jonction
6. ancrage
7. coin extérieur carré

**Schnitt 5**  
Fenstersturz

**section 5**  
window lintel

**coupe 5**  
linteau



1. Fassadenbekleidung
2. senkrechtes Tragprofil
3. Systema L-Wandkonsole
4. Befestigungsniel
5. Verbindungsniel
6. Verankerung
7. Fensterzarge
8. Belüftungsöffnung
9. Systema Stimmgabelprofil

1. cladding panel
2. vertical holding track
3. Systema L-bracket
4. fixing rivet
5. connecting rivet
6. fixing
7. window frame
8. ventilation opening
9. Systema F-profile

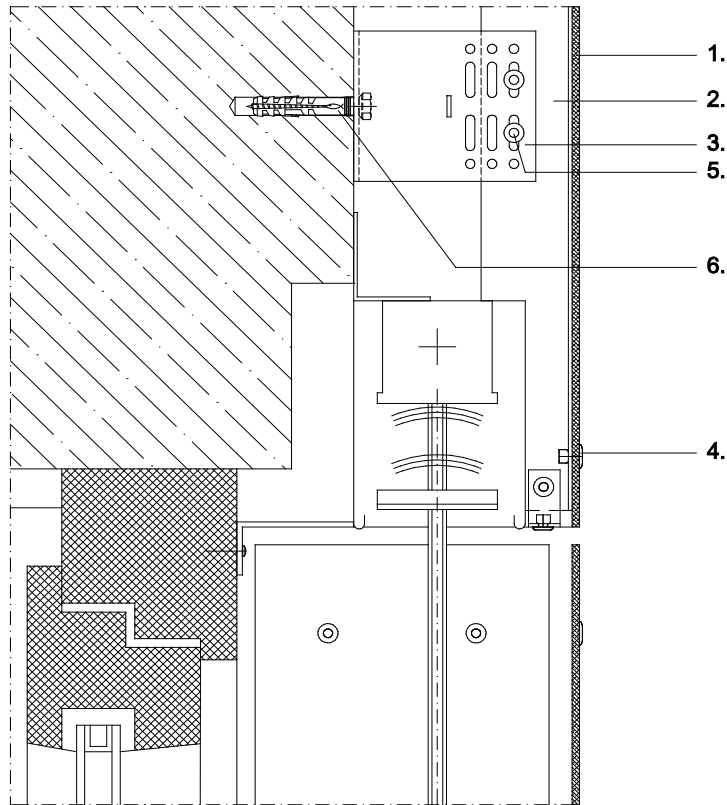
1. revêtement de façade
2. profil support vertical
3. équerre en L Systema
4. rivet de fixation
5. jonction
6. ancrage
7. châssis
8. trou pour ventilation
9. profil F Systema (diapason)



**Schnitt 5**  
Jalousienkasten

**section 5**  
shutter case

**coupe 5**  
carter persienne

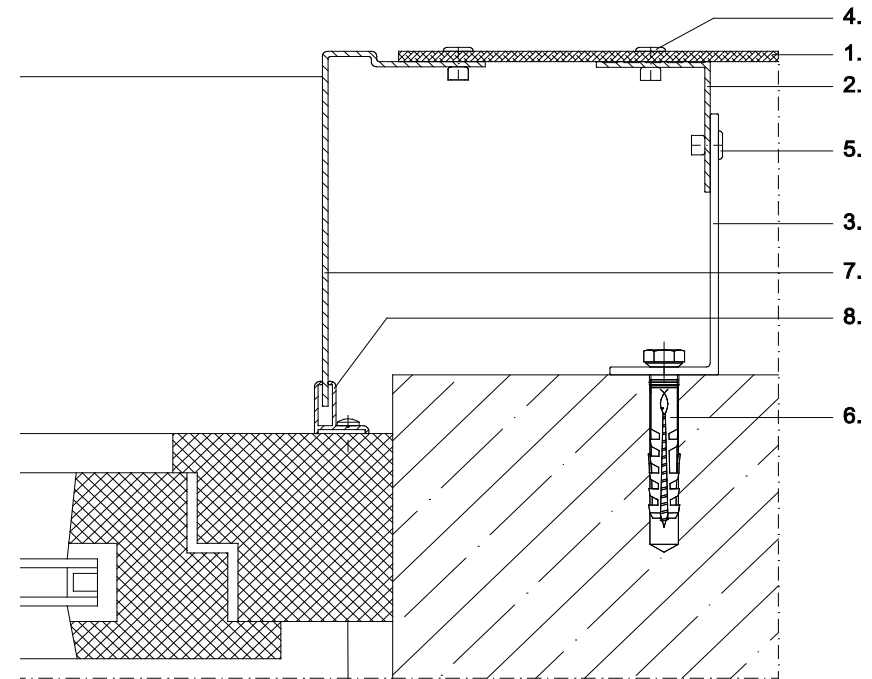


- |                           |                           |                            |
|---------------------------|---------------------------|----------------------------|
| 1. Fassadenbekleidung     | 1. cladding panel         | 1. revêtement de façade    |
| 2. senkrechtes Tragprofil | 2. vertical holding track | 2. profil support vertical |
| 3. Systema L-Wandkonsole  | 3. Systema L-bracket      | 3. équerre en L Systema    |
| 4. Befestigungsriet       | 4. fixing rivet           | 4. rivet de fixation       |
| 5. Verbindungsriet        | 5. connecting rivet       | 5. jonction                |
| 6. Verankerung            | 6. fixing                 | 6. ancrage                 |

**Schnitt 6**  
Fensterlaibung

**section 6**  
window recess

**coupe 6**  
joue de fenêtre

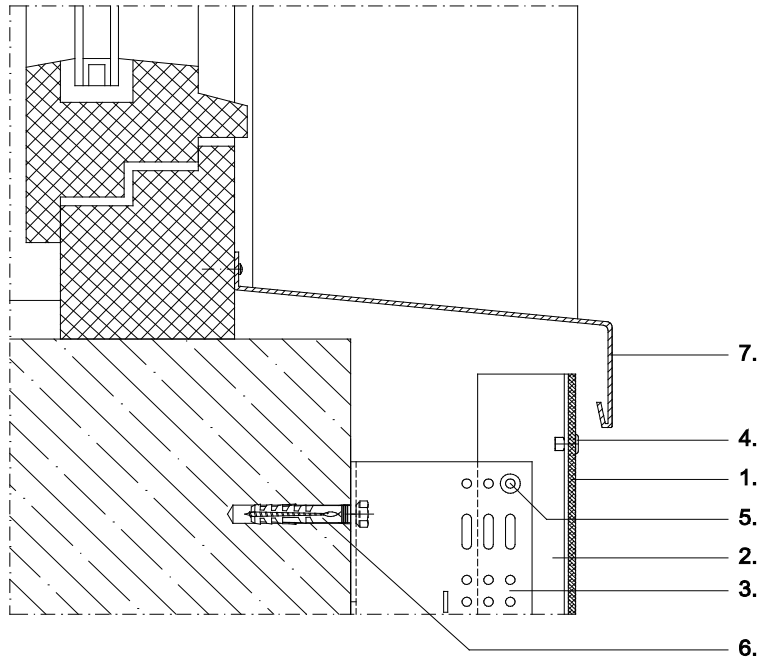


- |                             |                           |                                   |
|-----------------------------|---------------------------|-----------------------------------|
| 1. Fassadenbekleidung       | 1. cladding panel         | 1. revêtement de façade           |
| 2. senkrechtes Tragprofil   | 2. vertical holding track | 2. profil support vertical        |
| 3. Systema L-Wandkonsole    | 3. Systema L-bracket      | 3. équerre en L Systema           |
| 4. Befestigungsriet         | 4. fixing rivet           | 4. rivet de fixation              |
| 5. Verbindungsriet          | 5. connecting rivet       | 5. jonction                       |
| 6. Verankerung              | 6. fixing                 | 6. ancrage                        |
| 7. Fensterzarge             | 7. window frame           | 7. châssis                        |
| 8. Systema Stimmgabelprofil | 8. Systema F-profile      | 8. profil F Systema<br>(diapason) |

**Schnitt 7**  
Fensterbank

**section 7**  
windowsill

**coupe 7**  
bavette de fenêtre  
extérieure

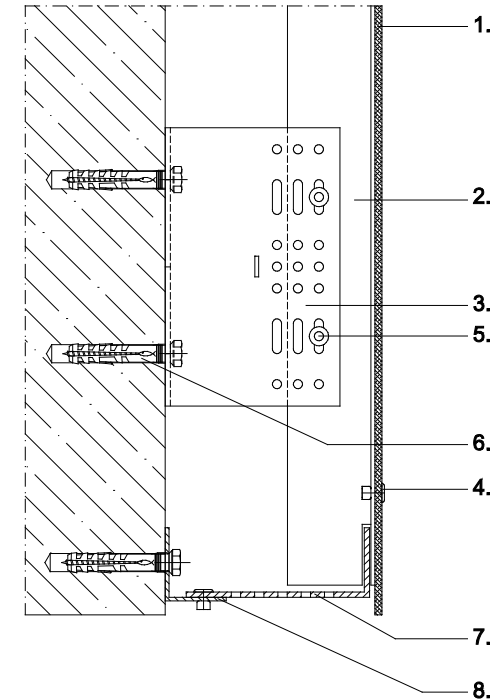


- |                           |                           |                            |
|---------------------------|---------------------------|----------------------------|
| 1. Fassadenbekleidung     | 1. cladding panel         | 1. revêtement de façade    |
| 2. senkrechtes Tragprofil | 2. vertical holding track | 2. profil support vertical |
| 3. Systema L-Wandkonsole  | 3. Systema L-bracket      | 3. équerre en L Systema    |
| 4. Befestigungsniel       | 4. fixing rivet           | 4. rivet de fixation       |
| 5. Verbindungsniel        | 5. connecting rivet       | 5. jonction                |
| 6. Verankerung            | 6. fixing                 | 6. ancrage                 |
| 7. Systema Fensterbank    | 7. Systema windowsill     | 7. bavette Systema         |

**Schnitt 8**  
Sockelabschluss

**section 8**  
bottom closure

**coupe 8**  
tôle basse de  
calfeutrement  
(raccord de socle)

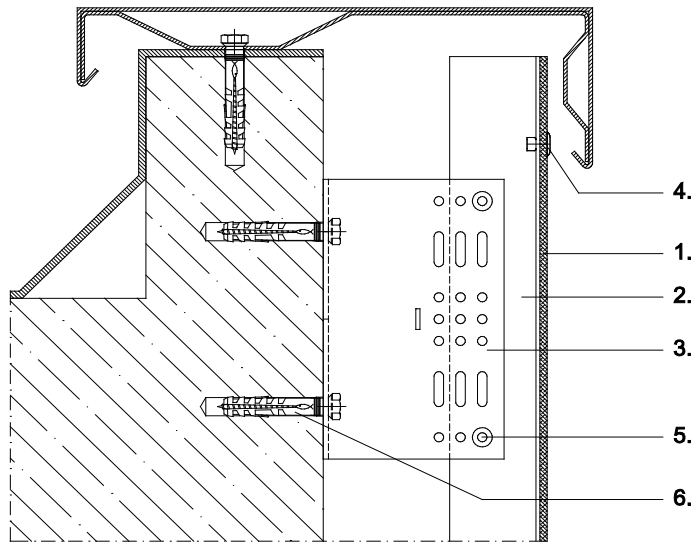


- |                                  |                                       |                                   |
|----------------------------------|---------------------------------------|-----------------------------------|
| 1. Fassadenbekleidung            | 1. cladding panel                     | 1. revêtement de façade           |
| 2. senkrechtes Tragprofil        | 2. vertical holding track             | 2. profil support vertical        |
| 3. Systema L-Wandkonsole         | 3. Systema L-bracket                  | 3. équerre en L Systema           |
| 4. Befestigungsniel              | 4. fixing rivet                       | 4. rivet de fixation              |
| 5. Verbindungsniel               | 5. connecting rivet                   | 5. jonction                       |
| 6. Verankerung                   | 6. fixing                             | 6. ancrage                        |
| 7. Abschlusswinkel mit Belüftung | 7. base angle with ventilation system | 7. angle avec trou de ventilation |
| 8. Wandwinkel                    | 8. wall angle                         | 8. angle                          |

**Schnitt 9**  
**Attikaabschluss**

**section 9**  
**parapet**

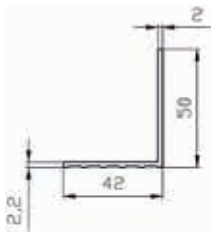
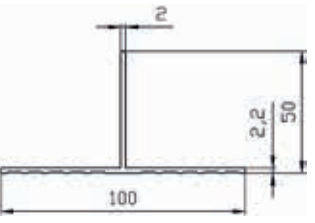
**coupe 9**  
**couvre-mur**

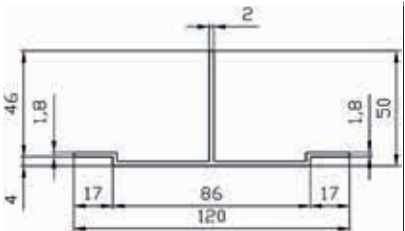
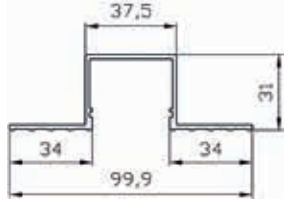


- |                           |                           |                            |
|---------------------------|---------------------------|----------------------------|
| 1. Fassadenbekleidung     | 1. cladding panel         | 1. revêtement de façade    |
| 2. senkrechtes Tragprofil | 2. vertical holding track | 2. profil support vertical |
| 3. Systema L-Wandkonsole  | 3. Systema L-bracket      | 3. équerre en L Systema    |
| 4. Befestigungsniel       | 4. fixing rivet           | 4. rivet de fixation       |
| 5. Verbindungsniel        | 5. connecting rivet       | 5. jonction                |
| 6. Verankerung            | 6. fixing                 | 6. ancrage                 |

**Inhaltsverzeichnis Profilübersicht ALWI** für Fassadenplatten aus Verbundmaterial  
**Contents profile list ALWI** for wall panels of composite material  
**Index ensemble de profil ALWI** pour des plaques façade du matériel composé

Seite page page	Profile	profiles	profilés
	<b>vertikale Tragprofile</b>	<b>vertical holding tracks</b>	<b>rails porteurs verticaux</b>
07.17	Winkelprofil 42/50 Typ I prof. T-Profil 100/50 prof.	L-profile 42/50 Typ I prof. T-profile 100/50 prof.	profil L 42/50 Typ I prof. profil T 100/50 prof.
	<b>Profile Ecoclad</b>	<b>profiles Ecoclad</b>	<b>profilés Ecoclad</b>
07.18	T-Profil Ecoclad 120/50 Hutprofil 34/31/37,5/31/34mm	T-profile Ecoclad 120/50 top hat profile 34/31/37,5/31/34mm	profil T Ecoclad 120/50 profil oméga 34/31/37,5/31/34mm
	<b>L-Wandkonsolen</b>	<b>L-brackets</b>	<b>équerres en L</b>
07.19	WB 0 - 85/160/250mm	WB 0 - 85/160/250mm	WB 0 - 85/160/250mm
07.20	WB 1-6 - 85/160/250mm	WB 1-6 - 85/160/250mm	WB 1-6 - 85/160/250mm
07.21	WB 7-9,5 - 85/160/250	WB 7-9,5 - 85/160/250	WB 7-9,5 - 85/160/250
07.22	WB 10-14 - 85/160/250mm	WB 10-14 - 85/160/250mm	WB 10-14 - 85/160/250mm

Profiltyp profile type type de profil	Länge (mm) length (mm) longueur (mm)	Material material matériel	Einzelpreis unit price prix unitaire
 <p>Winkelprofil 42/50 Typ I prof. L-profile 42/50 Typ I prof. profile L 42/50 Typ I prof.</p>	3000 6000	EN AW 6063 T66	
 <p>T-Profil 100/50 prof. T-profile 100/50 prof. profile T 100/50 prof.</p>	3000 5600 6000	EN AW 6063 T66	

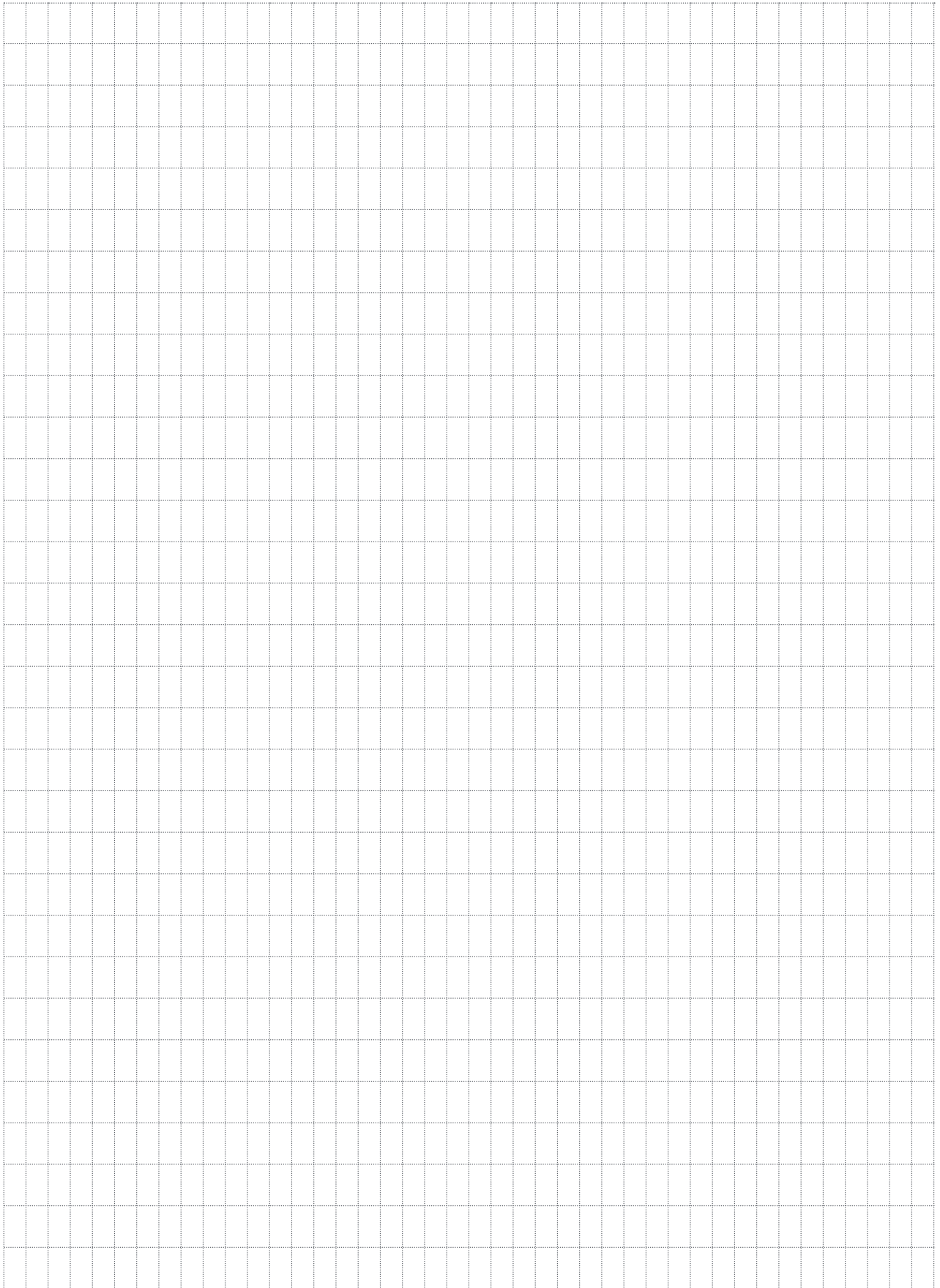
Profiltyp profile type type de profil	Länge (mm) length (mm) longueur (mm)	Material material matériel	Einzelpreis unit price prix unitaire
 <p>T-Profil Eco-Clad 120/50 T-profile Eco-Clad 120/50 profile T Eco-Clad 120/50</p>	6000	EN AW 6063 T66	
 <p>Hutprofil 34/31/37,5/31/34mm top hat profile 34/31/37,5/31/34mm profil oméga 34/31/37,5/31/34mm</p>	5600	EN AW 6063 T66	

Profiltyp profile type type de profil	Länge (mm) length (mm) longueur (mm)	Material material matériau	Einzelpreis unit price prix unitaire
	WB0 40/40/3-85	EN AW 6063 T66	
	WB0 40/40/3-160	EN AW 6063 T66	
	WB0 40/40/3-250	EN AW 6063 T66	
WB0 40/40/3 - 85/160/250mm			

Profiltyp profile type type de profil	Länge (mm) length (mm) longueur (mm)	Material material matériau	Einzelpreis unit price prix unitaire														
	WB1 40/60/3-85 WB2 40/80/3-85 WB3 40/100/3-85 WB4 40/120/3-85 WB5 40/140/3-85 WB6 40/160/3-85	EN AW 6063 T66															
	WB1 40/60/3-160 WB2 40/80/3-160 WB3 40/100/3-160 WB4 40/120/3-160 WB5 40/140/3-160 WB6 40/160/3-160	EN AW 6063 T66															
	WB1 40/60/3-250 WB2 40/80/3-250 WB3 40/100/3-250 WB4 40/120/3-250 WB5 40/140/3-250 WB6 40/160/3-250	EN AW 6063 T66															
WB 1-6 - 85/160/250mm																	
		<table border="1"> <thead> <tr> <th>L-Wandkonsole L-bracket équerre en L</th> <th>Länge L length L longueur L</th> </tr> </thead> <tbody> <tr> <td>WB1</td> <td>60 mm</td> </tr> <tr> <td>WB2</td> <td>80 mm</td> </tr> <tr> <td>WB3</td> <td>100 mm</td> </tr> <tr> <td>WB4</td> <td>120 mm</td> </tr> <tr> <td>WB5</td> <td>140 mm</td> </tr> <tr> <td>WB6</td> <td>160 mm</td> </tr> </tbody> </table>	L-Wandkonsole L-bracket équerre en L	Länge L length L longueur L	WB1	60 mm	WB2	80 mm	WB3	100 mm	WB4	120 mm	WB5	140 mm	WB6	160 mm	
L-Wandkonsole L-bracket équerre en L	Länge L length L longueur L																
WB1	60 mm																
WB2	80 mm																
WB3	100 mm																
WB4	120 mm																
WB5	140 mm																
WB6	160 mm																

Profiltyp profile type type de profil	Länge (mm) length (mm) longueur (mm)	Material material matériau	Einzelpreis unit price prix unitaire											
	WB7 40/180/4/3-85	EN AW 6063 T66												
	WB8 40/200/4/3-85													
	WB8,5 40/210/4/3-85													
	WB9 40/220/4/3-85													
	WB9,5 40/230/4/3-85													
	WB7 40/180/4/3-160	EN AW 6063 T66												
	WB8 40/200/4/3-160													
	WB8,5 40/210/4/3-160													
	WB9 40/220/4/3-160													
	WB9,5 40/230/4/3-160													
	WB7 40/180/4/3-250	EN AW 6063 T66												
	WB8 40/200/4/3-250													
WB8,5 40/210/4/3-250														
WB9 40/220/4/3-250														
WB9,5 40/230/4/3-250														
WB7-9,5 - 85/160/250mm		<table border="1"> <thead> <tr> <th>L-Wandkonsole L-bracket équerre en L</th> <th>Länge L length L longueur L</th> </tr> </thead> <tbody> <tr> <td>WB7</td> <td>180 mm</td> </tr> <tr> <td>WB8</td> <td>200 mm</td> </tr> <tr> <td>WB8,5</td> <td>210 mm</td> </tr> <tr> <td>WB9</td> <td>220 mm</td> </tr> <tr> <td>WB9,5</td> <td>230 mm</td> </tr> </tbody> </table>	L-Wandkonsole L-bracket équerre en L	Länge L length L longueur L	WB7	180 mm	WB8	200 mm	WB8,5	210 mm	WB9	220 mm	WB9,5	230 mm
L-Wandkonsole L-bracket équerre en L	Länge L length L longueur L													
WB7	180 mm													
WB8	200 mm													
WB8,5	210 mm													
WB9	220 mm													
WB9,5	230 mm													

Profiltyp profile type type de profil	Länge (mm) length (mm) longueur (mm)	Material material matériau	Einzelpreis unit price prix unitaire											
	WB10 43/240/4/3-85	EN AW 6063 T66												
	WB11 43/260/4/3-85													
	WB12 43/280/4/3-85													
	WB13 43/300/4/3-85													
	WB14 43/320/4/3-85													
	WB10 43/240/4/3-160	EN AW 6063 T66												
	WB11 43/260/4/3-160													
	WB12 43/280/4/3-160													
	WB13 43/300/4/3-160													
	WB14 43/320/4/3-160													
	WB10 43/240/4/3-250	EN AW 6063 T66												
	WB11 43/260/4/3-250													
	WB12 43/280/4/3-250													
	WB13 43/300/4/3-250													
WB14 43/320/4/3-250														
WB10-14 - 85/160/250mm		<table border="1"> <thead> <tr> <th>L-Wandkonsole L-bracket équerre en L</th> <th>Länge L length L longueur L</th> </tr> </thead> <tbody> <tr> <td>WB10</td> <td>240 mm</td> </tr> <tr> <td>WB11</td> <td>260 mm</td> </tr> <tr> <td>WB12</td> <td>280 mm</td> </tr> <tr> <td>WB13</td> <td>300 mm</td> </tr> <tr> <td>WB14</td> <td>320 mm</td> </tr> </tbody> </table>	L-Wandkonsole L-bracket équerre en L	Länge L length L longueur L	WB10	240 mm	WB11	260 mm	WB12	280 mm	WB13	300 mm	WB14	320 mm
L-Wandkonsole L-bracket équerre en L	Länge L length L longueur L													
WB10	240 mm													
WB11	260 mm													
WB12	280 mm													
WB13	300 mm													
WB14	320 mm													







# Systema®

## Systema Pohl GmbH

Margarete-Steiff-Str. 6  
D-24558 Henstedt-Ulzburg  
Deutschland / Germany

Fon: +49 (0) 41 93 / 99 11-0  
Fax: +49 (0) 41 93 / 99 11-49

info@systema.systems  
www.systema.systems



Bitte besuchen Sie uns für weitere  
technische Informationen und  
eine Vielzahl von Referenzen  
im Internet: [www.systema.systems](http://www.systema.systems)

Ein Unternehmen der  
POHL-Gruppe