

THE FUHR SYSTEM SOLUTION FOR EMERGENCY EXIT DOORS



Aluminium/Steel



Timber

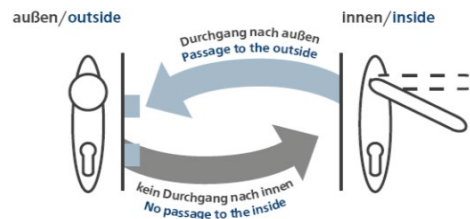
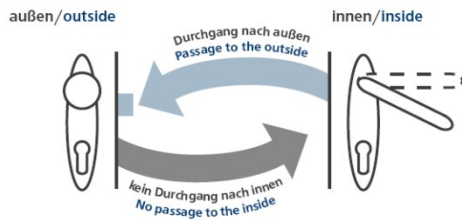


uPVC



For all materials

- Emergency exit devices are available for all materials
- The emergency exit devices have been tested and certified according to EN 179 and EN 1125.
- Current certificates can be found at www.fuhr.de

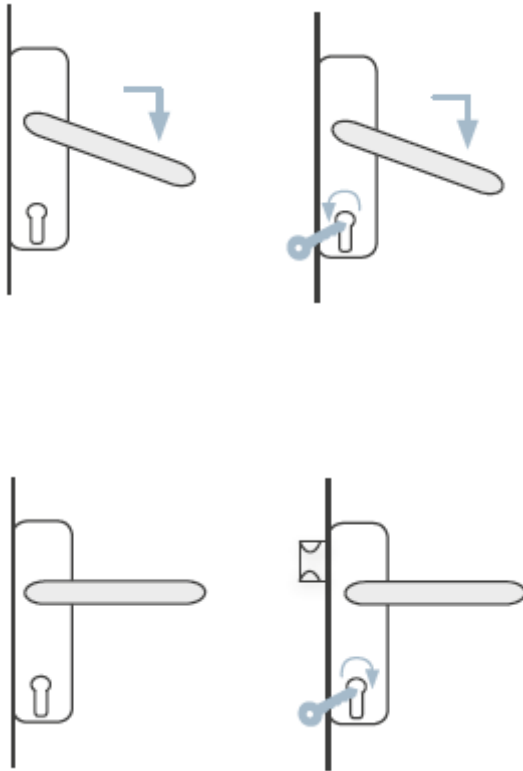


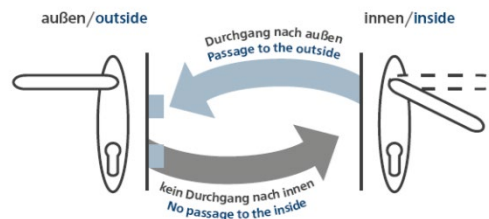
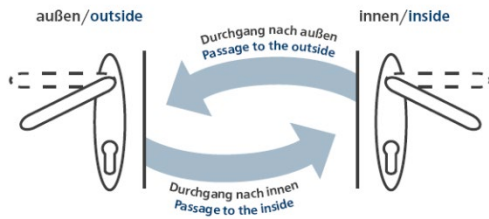
Key-operated latch function E

- Continuous follower
 - Permanently effective escape door function from the inside
 - Door opening from the inside: by using the handle or panic push bar
 - Door opening from the outside: retractable latch via key
 - Hardware inside: handle or panic push bar
 - Hardware outside: fixed knob or push bar
-
- Applications:
 - Doors to boiler rooms, elevators, warehouses and commercial buildings
 - Main entrance doors in apartment buildings etc.
 - FUHR locks:
 - **multisafe** 870
 - **multisafe** 871
 - **multitronic** 881
 - **autosafe** 833P/835P
 - **autotronic** 834P/836P

Key-operated latch function E with controlled latch locking

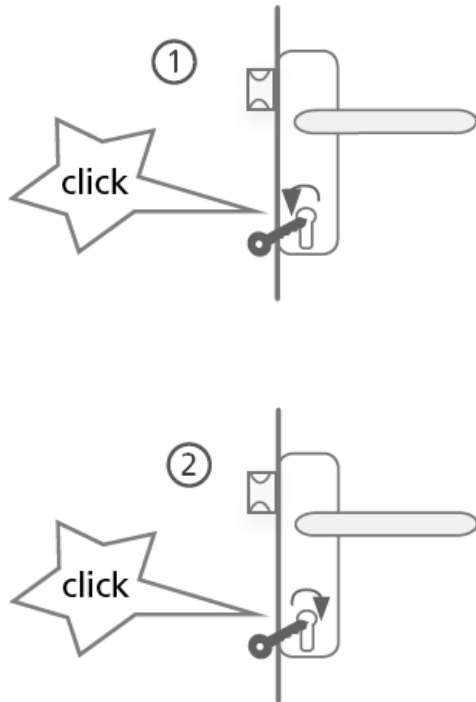
- Continuous follower
 - Permanently effective escape door function from the inside
 - Door opening from the inside: by using the handle or panic push bar
 - Door opening from the outside: retractable latch via key
 - Hardware inside: handle or panic push bar
 - Hardware outside: fixed knob or push bar
 - All latches and locking elements can be retracted and locked in this position. Then the escape door can only be locked via the door closer
-
- Applications:
 - **Attention! Not allowed for fire resistant doors!**
 - Main entrance door in: office buildings, old people's homes, hotels, schools, commercial buildings, department stores etc.
-
- FUHR locks:
 - **autosafe** 833P/835P
 - **autotronic** 834P/836P
 - (on **multitronic** 881 and **autotronic** 834P/836P this function can also be set via the permanent open function of the multifunction control)





Access function D

- Split follower
- Permanently effective escape door function from the inside
- Door opening from the inside: by using the handle or panic push bar
- Door opening from the outside: with the cylinder key
In the unlocked position (or after a hardware operation from the inside) the door can also be opened from the outside until it is manually relocked
- Hardware inside: handle or panic push bar
- Hardware outside: handle
- Applications
 - For e.g. doors on emergency exit and escape routes
 - Side entrance doors in office and administration buildings, side entrance doors of hotels
 - Persons can leave the building and at the same time the door is unlocked for rescue personnel
- FUHR locks:
 - **multisafe 870**
 - **multisafe 871**



Switching function B

- Split follower
 - Permanently effective escape door function from the inside
 - Door opening from the inside: by using the handle or panic push bar
 - Door opening from the outside: the external fitting is permanently enabled or disabled by means of the key
 - Hardware inside: handle or panic push bar
 - Hardware outside: handle
-
- Application:
 - For e.g. side entrance doors on emergency exit routes that occasionally need to be opened from the outside using the handle
 - FUHR locks:
 - **autosafe** 833P/835P
 - **autotronic** 834P/836P
 - To activate the outside lever, the key is turned in the locking direction until it clicks quietly, then the key is turned back and removed
 - **multitronic** 881
 - A comparable function (switching function B1) can be achieved with the day-latch-function of the control unit

(multisafe
871



multisafe 871

- Panic mortise lock
- The door is locked and unlocked by turning the key once
- Transmission-controlled
- Fire-resistant design as standard
- Panic functions D and E available
- Works with tested FZG freewheel cylinder

Advantages and benefits

- ✓ Safe escape is guaranteed in case of emergency by simply actuating the lever
- ✓ Easy to operate thanks to precise transmission design

(multisafe
870GL



multisafe 870 GL

- Transmission-controlled multipoint locking system with panic function
- The door is locked and unlocked by turning the key twice
- Door opening from outside via cylinder key
- Door opening from inside by using the lever or panic push bar
- Panic functions D and E available
- Fire-resistant design as standard
- Optional version with lever monitoring contact: Switching contact for monitoring the follower, enables e.g. "authorised exit" when the burglar alarm is active
- Works with tested FZG freewheel cylinder

Advantages and benefits

- ✓ Safe escape is guaranteed in case of emergency by simply actuating the lever
- ✓ Precision transmission design for easy operation and powerful locking strength
- ✓ Proven safety thanks to certification according to EN 179 and EN 1125

(**autosafe**
833P/833PK

(**autotronic**
834P/834PK



Retrofittable
motor

autosafe 833P | autosafe 834P

- Automatic multipoint locking system with panic function
- Also available with motorised unlocking (**autotronic** 834P)
- When the door closes, two sturdy deadlocking latches extend, automatically locking the door in multiple places
- Door opening from outside via cylinder key
- Door opening from inside by using the lever or panic push bar
- Fire-resistant design as standard
- Panic functions D and E available
- Panic function E also available with switching contacts (**autosafe** 833PK and **autotronic** 834PK)

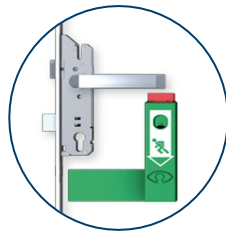
Advantages and benefits

- ✓ Safe escape is guaranteed in case of emergency by simply actuating the lever
- ✓ Additional security thanks to automatic locking
- ✓ No freewheel cylinder required
- ✓ Certified according EN 179 and EN 1125
- ✓ Available as single and double leaf version

(autosafe
833P



Motor
nachrüstbar



autosafe 833P in kindergarten version

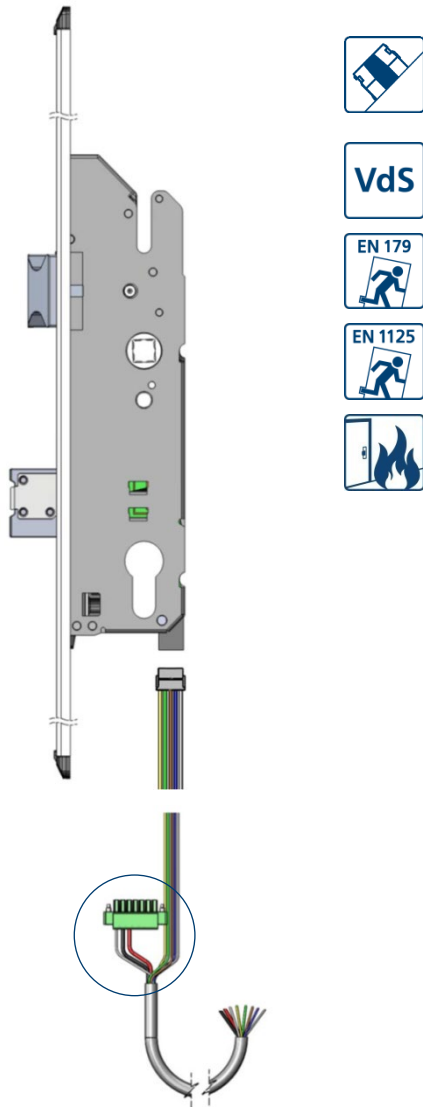
- Automatic multipoint locking system with panic function and dual lever, for an alarm-secured opening via the lower lever
- Retrofittable motor for a motorised opening
- Dual lever system: upper lever for adults (1,570 mm high), lower lever for children (850 mm high)
- Can be extended, for example, with GfS EH door guard or the GfS e-Bar®, which are equipped with an acoustic pre-alarm
- Panic function B and E available
- Door opening from the outside via the cylinder key or at drop-off and pick-up times via the outside lever handle (panic function B)
- The door can be opened from the inside at any time by pressing the upper unsecured lever or, for children in an emergency, the lower alarm-secured lever or the panic push bar

Advantages and benefits

- ✓ Dual lever system for 2 opening variants: above for adults, below alarm-secured for children
- ✓ Safe escape is guaranteed in case of emergency by simply actuation
- ✓ Additional security thanks to automatic locking
- ✓ Certified according EN 179 and EN 1125

(autosafe
833PK

(autotronic
834PK



autosafe 833PK | autotronic 834PK

- Automatic multipoint locking system with panic function and switching contacts
- Also available with motorised unlocking (**autotronic 834PK**)
- Panic function E
- Cable for switching contact monitoring please order separately
- Cable for servo-support please order separately

Advantages and benefits

- ✓ For checking doors in escape routes
- ✓ Separate monitoring of:
 - Profile cylinder
 - Lever (monitoring the follower)
 - Deadbolt (open/closed)
- ✓ For motor-assisted „Servo“ opening (**autotronic 834PK**)



Set for the second leaf for double leaf emergency exit doors

- Suitable for **autosafe** 833P/PK and **autotronic** 834P/PK
- Set with all the fittings you need for the second leaf, including panic keep and switching lock
- Automatic locking of the shoot bolt throw
- When the second leaf is opened in an emergency the active leaf unlocks simultaneously.
- When the second leaf is closed does a switching lock automatically trigger the locking of the round rods at the top and bottom
- Fire-resistant design as standard

Advantages and benefits

- ✓ Safe escape is guaranteed in case of emergency by simply actuating the lever
- ✓ Non-handed use
- ✓ Certified according EN 179 and EN 1125
- ✓ Available on request: Inactive leaf set for motorised unlocking and automatic opening of double-leaf escape doors in combination with swing door drive units
- ✓ Panic keeps with integrated switching contact, VdS class C, optionally available

(**autosafe** 835P/835PK (**autotronic** 836P/836PK



Retrofittable motor

autosafe 835P | autotronic 836P

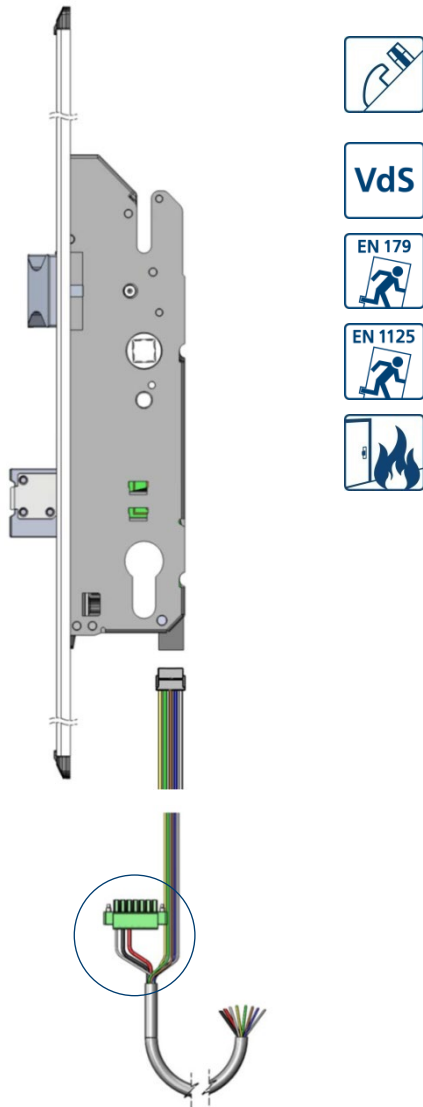
- **DuoSecure** automatic multipoint locking system with panic function
- Also available with motorised unlocking (**autotronic 836P**)
- When the door closes, main deadbolt and secondary deadbolt extend, automatically locking the door in multiple places
- Door opening from outside via cylinder key
- Door opening from inside by using the lever or panic push bar
- Fire-resistant design as standard
- Panic functions D and E available
- Panic function E also available with switching contacts (**autosafe 835PK** and **autotronic 836PK**)

Advantages and benefits

- ✓ Safe escape is guaranteed in case of emergency by simply actuating the lever
- ✓ Additional security thanks to automatic locking
- ✓ No freewheel cylinder required
- ✓ Certified according EN 179 and EN 1125
- ✓ Available as single and double leaf version

(autosafe
835PK

(autotronic
836PK



autosafe 835PK | autotronic 836PK

- DuoSecure automatic multipoint locking system with panic function and switching contacts
- Also available with motorised unlocking (**autotronic 836PK**)
- Panic function E
- Cable for switching contact monitoring please order separately
- Cable for servo-support please order separately

Advantages and benefits

- ✓ For checking doors in escape routes
- ✓ Separate monitoring of:
 - Profile cylinder
 - Lever (monitoring the follower)
 - Deadbolt (open/closed)
- ✓ For motor-assisted „Servo“ opening (**autotronic 836PK**)



Set for the second leaf for double leaf emergency exit doors

- Suitable for **autosafe** 835P/PK and **autotronic** 836P/PK
- Set with all the fittings you need for the second leaf, including panic keep and switching lock
- Automatic locking of the shoot bolt throw
- When the second leaf is opened in an emergency the active leaf unlocks simultaneously.
- When the second leaf is closed does a switching lock automatically trigger the locking of the round rods at the top and bottom
- Fire-resistant design as standard

Advantages and benefits

- ✓ Safe escape is guaranteed in case of emergency by simply actuating the lever
- ✓ Non-handed use
- ✓ Certified according EN 179 and EN 1125
- ✓ Available on request: Inactive leaf set for motorised unlocking and automatic opening of double-leaf escape doors in combination with swing door drive units
- ✓ Panic keeps with integrated switching contact, VdS class C, optionally available

(multitronic
881GL



multitronic 881GL

- Fully motorised lock with integrated panic function
- Automatic motorised locking when closing the door
- Door opening from inside by using the lever
- Door opening from outside via access control system
- Opening via cylinder key at any time
- Fire-resistant design as standard (9 mm follower)
- Integrated panic function E or B1
- Optional with ServoAccess for a convenient, motor-assisted opening via key or lever
- Optional version with lever monitoring contact for monitoring the follower
- Works with tested FZG freewheel cylinder

Advantages and benefits

- ✓ Fully motorised, automatic locking system for maximum security
- ✓ Powerfully unlocks doors by motor in less than a second
- ✓ Preconfigured for the connection of a wide range of additional components, e.g. intercoms, alarm systems, or swing door drives – guarantees more flexibility
- ✓ Easy to add FUHR radio access control systems



multitronic 881GL – Complete Set

- The standard version includes all system components in a set, ready to connect

Advantages and benefits

- ✓ Plug-in cable connections for quick, simple assembly – plug&play
- ✓ Comprehensive set for easy ordering
- ✓ All components installed in the door
- ✓ All functions can be checked even before the door leaves the factory
- ✓ Low additional installation costs – all that remains to do is connect the door to the 230 V power supply
- ✓ Diverse upgrade options thanks to range of interfaces and control functions

Optional accessories for single-leaf and double-leaf emergency exit doors



Carry bar

- Non-handed use
- For mounting on the inactive leaf
- Ground stainless steel



Panic push bars

- Stainless steel or aluminium
- For emergency exit doors according to EN 1125



Hardware for emergency exit doors

- Aluminium
- Knob and lever handle sets for emergency exit doors according to EN 179
- External hardware for emergency exit doors according to EN 1125



One-piece strike plates/strike plates

- Only the certified FUHR one-piece strike plates and strike plates may be used
- Profile-specific one-piece strike plates and strike plates for all materials available

Optional accessories

Universal latch slide

- For outward opening doors
- Plastic

Deadbolt switching contact

- For monitoring the main deadbolt
- VdS approval (class C)
- Compatible with all FUHR one-piece and standard strike plates
- Simple retrofitting without screw connection

Deadbolt switching contact 4/10/11

- For monitoring the side deadbolt
- VdS approval (class C)
- Compatible with all FUHR system one-piece and standard strike plates type 4/10/11
- Easy fitting

