



(autosafe₈₃₃ (autotronic₈₃₄

Automatic locking systems

Automatically more security



Advantages of automatic locking systems

Security

- The door is always securely locked automatically at several points

Comfort

- Manual locking is no longer necessary thanks to the automatic function
- Barrier-free solutions in accordance with DIN 18040 can be implemented, e.g., with 850 mm handle height

Energy efficiency

- Prevention of door warping due to permanently effective locking mechanism
- Durable tightness - for lower energy costs and reduction of external noise

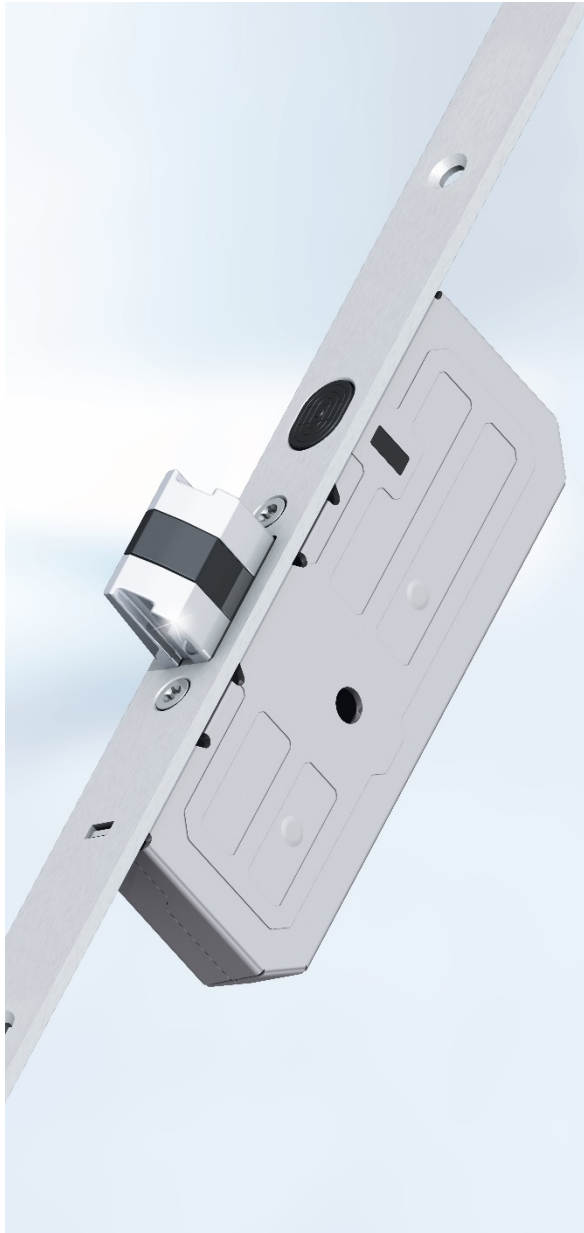


Advantages of autosafe 833/autotronic 834

- Increased security due to automatic locking that cannot be forgotten
- The additional latches become stable bolts as soon as the door is closed
- The modular design of the lock ensures flexible application possibilities
- The ability to retrofit all additional components at any time, such as access restrictor, additional bolt or soft latch, reduces storage costs
- High-quality materials ensure durability
- Can be used on the right and left due to simple latch conversion
- For house and object doors made of aluminium, PVC and timber

TYPE 4 – THE CONVENIENT LOCKING SYSTEM





Type 4 – the convenient locking system

Sturdy deadlocking latches

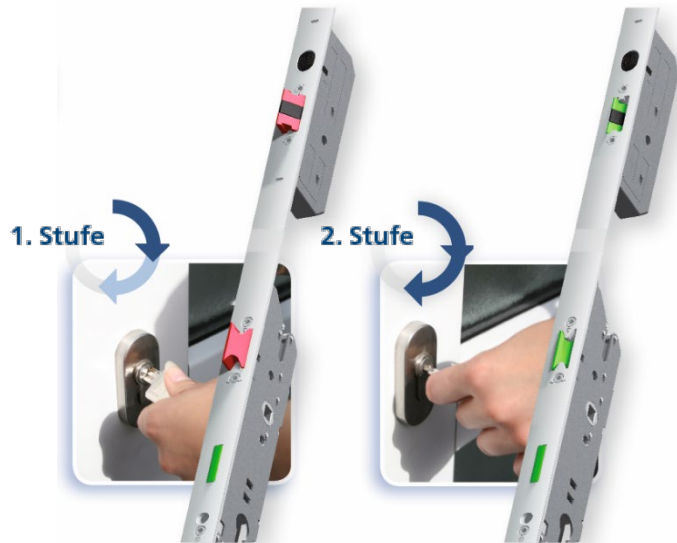
- Optimum contact pressure and permanent tightness
- Easy to close thanks to the tapered latch rear-side

Soft closing

- The high-quality PVC inserts in the deadlocking latches result in perceptible soft closing
- Noise insulating internal mechanism in the deadlocking latch casings for exceptionally quiet closing

Magnetic release

- Proven magnetic technology
- Low-wear and dirt-resistant
- Tamper-proof
- No unintentional triggering, incorrect operation or manipulation



Effortless opening

- Convenient opening due to slight and consistent operating forces
- Easy to operate from the outside via the cylinder
- From the inside simply via the lever handle

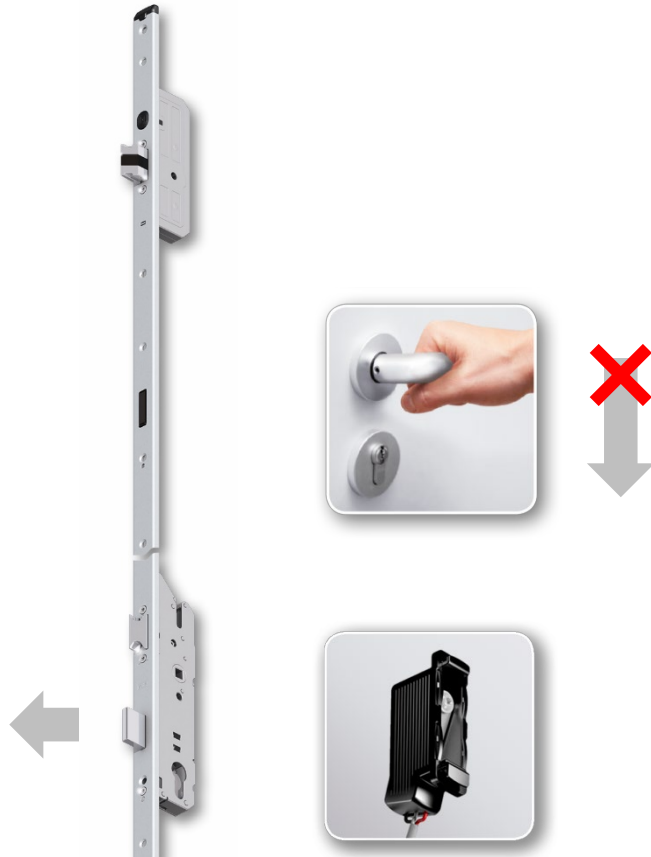
2-step opening sequence

Step 1:

- The deadlocking latches are only retracted by 10 mm and the deadbolt is retracted completely

Step 2:

- The deadlocking latches and the main latch are retracted completely



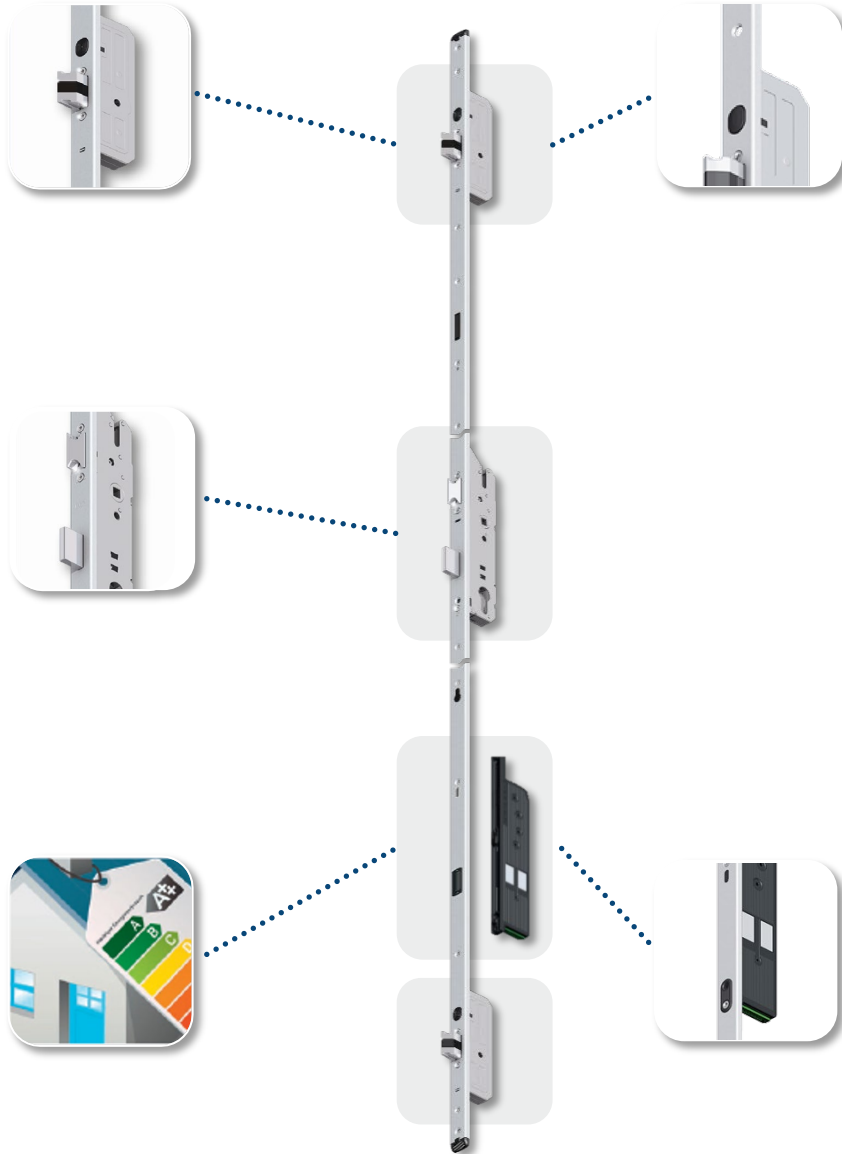
Additional protection

- The main latch can be extended via the key
- At the same time the lever handle is blocked

Benefits

- ✓ Ideal for child safety
- ✓ For the control of further functions by means of bolt switch contact

(autosafe
833



Outstanding characteristics – autosafe 833

Smooth and secure closing

- Noise-insulated interior in the deadlocking latch casings for exceptionally quiet closing

Increased thermal insulation

- The constant contact pressure via 3 locking points results in lower energy losses and a possible door warpage is permanently prevented

Magnetic release

- Wear-free, tamper-proof and dirt-resistant

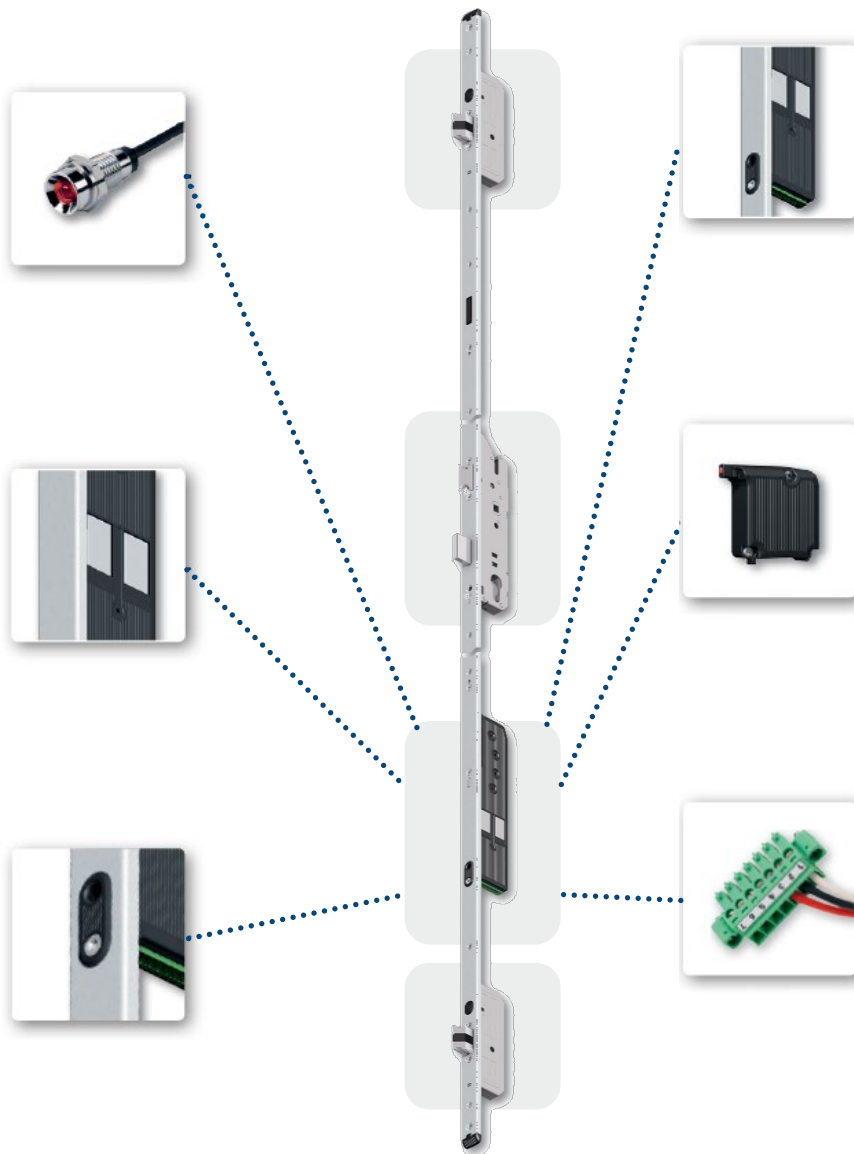
Proven technology

- Successfully completed endurance tests with more than 200,000 operations

Retrofittable motor drive

- Provides maximum flexibility in responding to customer requests

(autotronic
834



Outstanding characteristics – autotronic 834

Assembles motor drive

- 834 is equipped with a factory-fitted motor drive

Patented double motor principle

- Quick and powerful release within half a second

Intelligent motor drive with reed switch

- Easy use of spring-loaded contacts
- Immediate release of the latch and the deadlocking latches

Universal connection options

- Directly on the motor connector
- E.g., for access control systems

Control LED for the outside of the door

- Can be connected directly to the motor drive

Radio receiver module

- Optional for receiving a radio signal
- Can be plugged onto the motor drive and connected directly there – without separate control

PRODUCT RANGE



(autosafe
833

(autosafe
833TF

(autosafe
833SP

(autotronic
834



Vds

Automatic locking systems for private and public doors

autosafe 833

- Automatic multipoint locking system

autosafe 833TF

- Automatic multipoint locking system with day latch function

autosafe 833SP

- Automatic multipoint locking system with integrated access restriction
- Can also be deactivated from outside via the main lock

autotronic 834

- Automatic multipoint locking system with motorised unlocking

(autosafe 833P (autosafe 833PK (autotronic 834P (autotronic 834PK



Automatic locking systems for single- and double-leaf emergency exit doors

autosafe 833P

- Automatic panic multipoint locking system

autosafe 833PK

- Automatic panic multipoint locking system with integrated switching contacts

autotronic 834P

- Automatic panic multipoint locking system with motorised unlocking

autotronic 834PK

- Automatic panic multipoint locking system with motorised unlocking and switching contacts
- For convenient motor support when opening by lever or cylinder with servo technology

(autosafe
833P (autotronic
834P



Automatic multipoint locking system for single-leaf emergency exits in Kindergartens

autosafe 833P / autotronic 834

- With double leaver: alarm-protected lower leaver for children, upper leaver without alarm for adults
- Certificates: EN 179 and EN 1125 – for single-leaf emergency exit doors
- Panic functions: B and E
- Fire-resistant design: autosafe standard



Further design variants

Fire-resistant version

- Optionally available
(already standard for panic locking systems)

Emergency exit door functions

- Switching function B and key-operated latch function E available

Controlled latch locking

- Optional design for panic function E
(not permitted for fire protection doors)



Optional accessories

Retrofittable motor

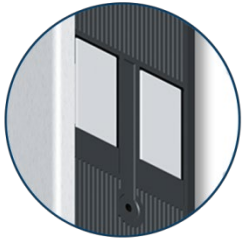
- For **autosafe** 833 (P/PK) and 835 (P/PK)
- Retrofitting with **autosafe** 835TF only in connection with a mechanical door strike without release lever

Access restriction lock

- Can be retrofitted; to restrict opening of the door;
- Can only be operated from the inside

Additional deadbolt lock

- Can be retrofitted
- Independent deadbolt from the main lock



Optional accessories

Extension type 4

- For door heights up to 4,000 mm
- Can be shortened by 200, 400 or 600 mm

Panic push bars

- In accordance with EN 1125
- Aluminium or stainless steel

Panic fittings

- In accordance with EN 179
- Aluminium



Optional accessories

Cable for servo technology

- For **autotronic 834PK** for motorised support when opening by lever and/or key

Cable for switching contacts

- For **autosafe 833PK/autotronic 834PK** for lock monitoring

Fully motorised opening of inactive leaf

- On request



Aluminium/Steel



Timber



uPVC



For all materials

- Coordinated variants are available for the most diverse requirements of the respective door materials

(autosafe
833

(autotronic
834



Versions

Faceplate:

Flat 16, 20 and 24 mm

U 24 x 6, 24 x 6.7 and 30 x 8 mm

Backset:

35, 40, 45, 50, 55, 65 and 80 mm

Follower:

8 and 10 mm

9 mm with fire-resistant/with panic function

Centre:

PC 92/72 mm

RC 94/74 mm

Surface:

FUHR Silver and FUHR Silver ground

Stainless steel

Use:

For right and left doors



Type 4 – demonstrably secure

- Certified according to DIN 18251-3, class 3
- Tested according to EN V 15685
- VdS approval, class A
- Suitable for system tests according to EN 1627 up to RC 3
- Suitable for system tests according to EN 1634-1
- Meets the requirements of the product standards for the CE marking of doors according to EN 14351-1
- Certified according to EN 179 for emergency exit doors
- Certified according to EN 1125 for panic doors
- Certified according to SKG, 2 stars

SYSTEM COMPETENCE



Type 4/10/11

One-piece system strike plate

Type 4

Automatic deadlocking latch

Type 10

Automatic latching and hook bolts

Type 11

Hook bolts with dual round bolts



One for all – the system one-piece strike plate

- Proven and well-known system advantages
- Also available as individual locking plates
- Universal use of system-based frame parts
 - For key-operated and automatic locks
 - For panic and motorised versions
 - Suitable for types 4, 9, 10 and 11



Numerous benefits:

- ✓ One universal frame component for all lock types
- ✓ Optimum tightness due to adjustable locking boxes made of metal
- ✓ Efficiency in production
- ✓ Economic storage
- ✓ Safety in processing through system components
- ✓ Flexible response to customer requests
- ✓ Reliable longevity through high-quality materials
- ✓ Attractive appearance in the door rebate

Optional accessories



Type 4 magnet release

- For use with locks type 4
- Suitable for all one-piece and standard system strike plates



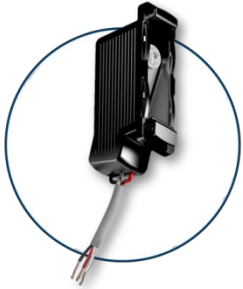
Type 10 magnet release

- For use with locks type 10
- Suitable for all one-piece and standard system strike plates



Contact magnet

- For use with the motorised FUHR locks **multitronic** and **autotronic**
- Suitable for all one-piece system strike plates



Optional accessories

Deadbolt switching contact

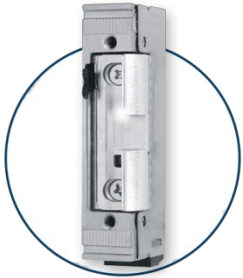
- For monitoring the locking status of the main deadbolt
- Suitable for all FUHR one-piece and standard strike plates
- Simple retrofitting without screwing
- VdS approval, class C



Deadbolt switching contact type 4/10/11

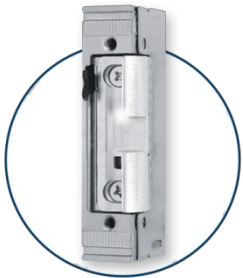
- For monitoring the locking status of additional bolts
- Suitable for the FUHR one-piece and standard system strike plates type 4/10/11
- Simple retrofitting
- VdS approval, class C

Optional accessories



Electric strikes

- For use with **autosafe** 833TF with day latch function
- Symmetrical
- With radius latch and special latch component
- Left-/right-hand use
- Universal voltage range
- Wide design variety



Mechanical door strikes

- For use with **autosafe** 833TF with day latch function
- Symmetrical
- With radius latch and special latch component
- Left-/right-hand use
- With or without release lever



Optional accessories

Radio receiver for electric strikes

- For use with **autosafe 833TF**
- Remotely opens doors fitted with electric strikes via FUHR access control systems
- Works with FUHR door strikes and all other standard door strikes
- Comes with radio master key
- Ideal for retrofitting

THE MOTORISED SOLUTION





(autotronic
834



The automatic multipoint locking system with motorised unlocking function

- Wide range of additional components
- Installation in existing objects or new buildings
- Quick plug&play installation
- Easy connection to all FUHR radio access control systems
- Various opening options via:
 - Intercom system
 - FUHR radio access control system
 - Any other access control system
 - SmartHome-solutions
 - Home automation systems
- **By retrofitting the motor drive to the autosafe 833, all functions of the autotronic 834 can also be used**

(autotronic
834



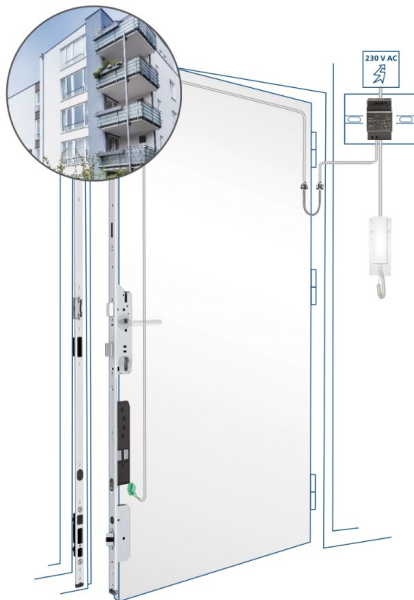
Numerous benefits

- ✓ Fast motorised unlocking within half a second
- ✓ Powerful motorised opening
- ✓ Durable double motor – tested with at least 500,000 operations
- ✓ Motor drive with LED connection for optional locking indicator on the outside of the door
- ✓ Integrated reed contact for the motor control
- ✓ Using the intelligent control allows further expansion steps as object-specific solutions, e.g.:
 - Permanently open function
 - Electronic deactivation of the access control systems
 - Swing door drive function
 - Door leaf position detection
- ✓ Also available as panic locking system for single- and double-leaf emergency exit doors according to EN 179 and EN 1125



Installation example 1

- Installation of all components in the door – plug & play
- With multi-functional control
- Spring-loaded contacts
- Frame-mounted switching power supply



Installation example 2

- Opening via intercom system
- No control required
- Cable transition
- DIN rail power supply



Installation example 3

- Radio receiver module – no control required
- Spring-loaded contacts
- Frame-mounted switching power supply



Installation example 4

- DIN rail multi-functional control
- Spring-loaded contacts
- DIN rail power supply

Individual components

Multi-functional control

- Control for **autotronic** 834 for installation into the frame
- Integrated radio receiver
- Visual locking status indicator
- Can be used to control any function because it includes inputs and outputs for the following as standard:
 - FUHR access control systems such as fingerprint scanners, transponders, etc.
 - Intercom systems
 - Building management systems
 - Tamper signal for alarm systems
 - Electronic deactivation of access control systems for alarm systems
 - Control pulse for swing door drive mechanisms
 - Permanent-open function, activated by radio or wired

Radio receiver module

- For **autotronic** 834
- For receiving a radio signal to open the door – without separate control



Individual components

Multi-functional control for rail mounting

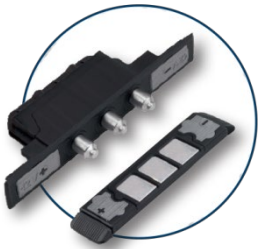
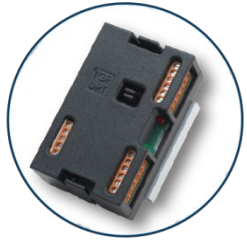
- Control circuit board for **autotronic 834**
- Including radio receiver with all functions and connection options as the multi-functional control
- For use in non-residential and retrofit projects
- For top hat rail of width 35 mm according to EN 50022

Control box with integrated mains adapter

- Junction box for **autotronic 834** with:
 - Control circuit board including radio receiver with all functions and connection options as the multi-functional control
 - Mains adapter: input voltage: 90-265 V AC, output voltage: 12 V DC/2.1 A

Spring-loaded contacts

- For wireless power and data transmission
- With multi-functional jack for connection to the motor
- Profile-related versions – for use with conventional or concealed hinges



Individual components



Transformer for mounting in the frame

- Electronically-controlled transformer
- Input: 230 V AC | Output: 12,5 V DC
- With connecting cables
- Also available as universal transformer:
 - Input: 110 – 230 V AC
 - Output: 12,5 V DC/1,9 A and 24 V DC/3A | Nominal voltage: 25 V DC \pm 5%



Transformer for rail mounting

- For use in non-residential and retrofit projects
- CE marking
- Input: 100-240 V AC | Output: 12 V DC/2A
- For top hat rail of width 35 mm according to EN 50022

Cable run

- Surface-mounted or concealed
- Chrome-plated brass



RADIO ACCESS CONTROL SYSTEMS





SmartConnect easy

- Door opening and monitoring via smartphone
- Intelligent access control system via WLAN



SmartConnect door

- Smart video intercom system
- Intelligent access control system via WLAN
- Operation, control and monitoring via tablet or smartphone



SmartTouch 2.0 door handles

- Convenient door opening with KeylessGo technology
- The SmartKey remains in the pocket, one touch of the door handle is enough
- Set with Smart radio module, stainless steel door handle (round or square) and Master SmartKey



Fingerprint scanner multiscan go

- Particularly easy programming via remote control
- No master finger required
- 2-channel technology for opening e.g. front door and garage



Radio key

- Radio key with 4-channel technology
- Copy-protected thanks to master function



Radio keypad

- 2-channel technology for opening e.g. front door and garage
- Freely programmable 4 to 8 digit code



Transponder

- 2-channel technology for opening e.g. front door and garage
- Including 2 master and 3 user transponder