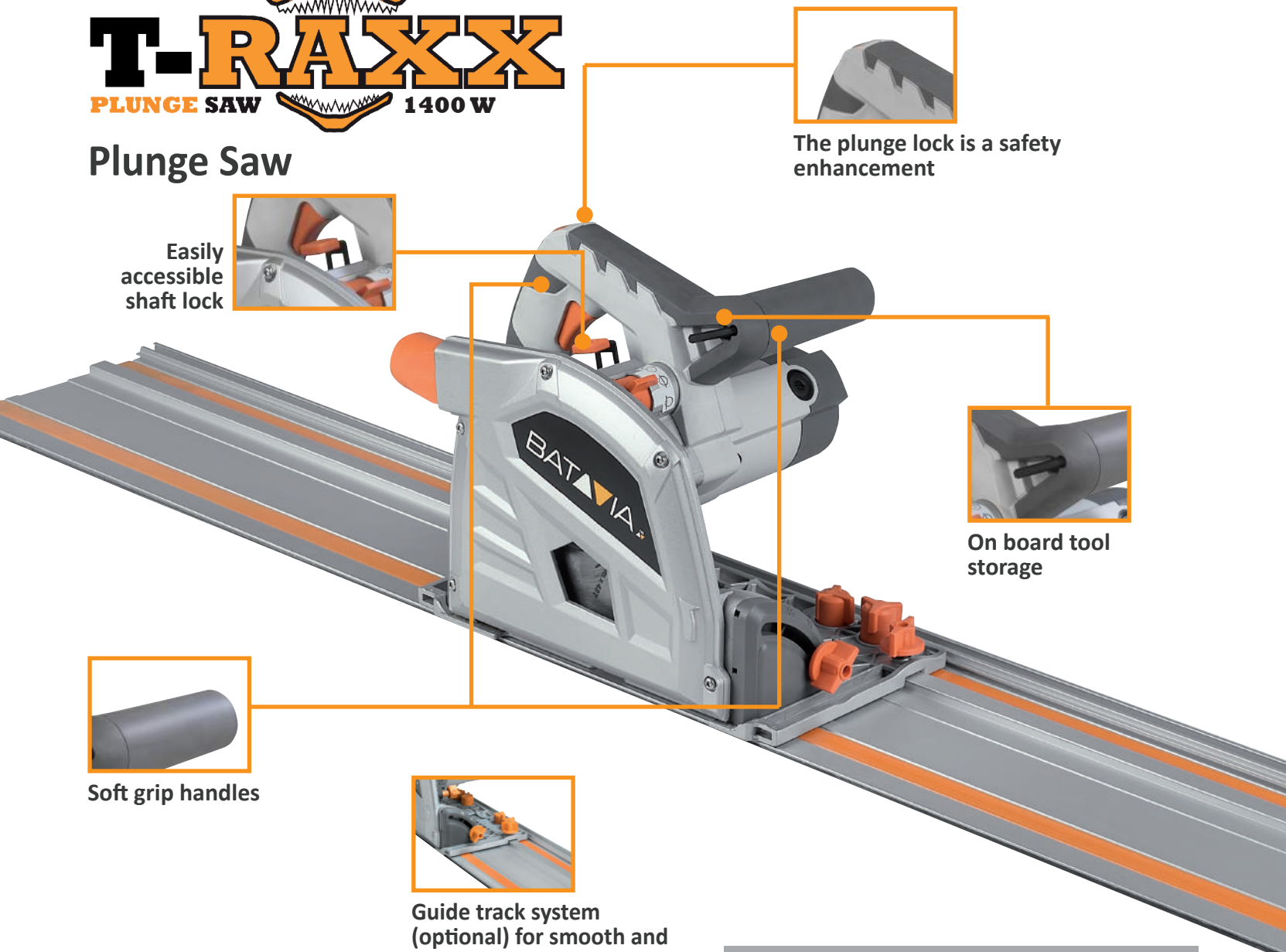




## Plunge Saw



The plunge lock is a safety enhancement



Easily accessible shaft lock



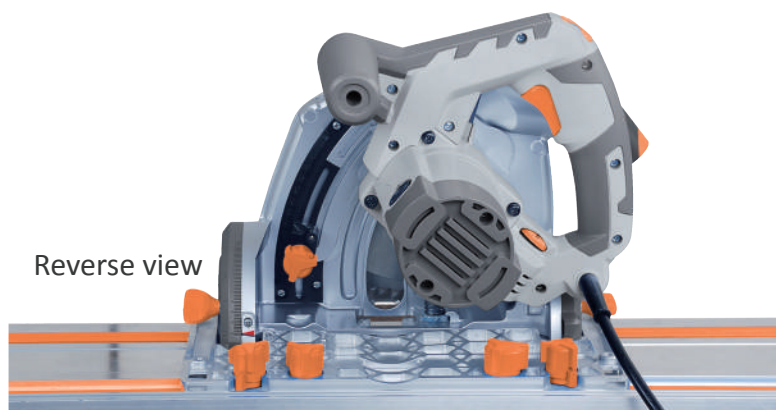
On board tool storage



Soft grip handles



Guide track system (optional) for smooth and precise straight and bevel cutting.



Reverse view

### T-RAXX Plunge Saw

**Features:**

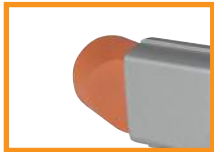
- Electronic variable speed
- Electronic constant speed
- Electronic soft start
- Anti Kick Back
- Track adjustment
- Guide Rail Lock
- Scribing function (2.0 mm)
- Easy Blade Change
- Festool® and Makita® track compatible



All major functions are activated via the intuitive mode selector barrel



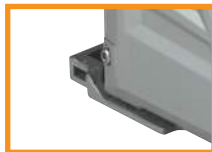
Quick change carbon brushes



Dust collection



Dual front and rear bevel quadrants



Width of cut indicators



Case included

### Technische Daten:

Voltage:	230 V~ 50 Hz
Input Power:	1400 Watt
No load speed (rpm):	2000 - 5300
Max. cut depth 90° with track:	54 mm
Max. cut depth 90° w/o track:	54 mm
Max. cut depth 45° with track:	38 mm
Max. cut depth 45° w/o track:	42 mm
Bevel range:	0° to 48°
Blade diameter:	Ø 165 mm
Arbor:	Ø 20 mm
Weight tool incl. case & blade:	9.2 kg

### Delivery includes:

T-RAXX plunge saw  
Incl. 48T TCT Saw blade  
Packed in strong Aluminium case

### Logistical Data:

EAN Code:	4050255016994
Quantity Box:	2 Pieces
Quantity Pallet:	24 Pieces
Quantity FCL 20":	600 Pieces
Quantity FCL 40":	1220 Pieces

### Approvals/Certificates:

CE, GS, EMC, RoHs, PAHS

Item-No: 7061274

