

KP-Test 5

Voltage detector with increased safety

KP-Test 5

Safely check for voltage

When working on electrical systems, ensuring people's safety and preventing damage to property are top priorities. It is essential to make absolutely sure that no voltage is present. PFISTERER voltage detectors combine maximum reliability and ease of use in one device. The KP-Test 5 family results from our decades of experience in developing safety devices with a practical focus.

Reliable self-test

Voltage detectors in the KP-Test 5 series perform an automatic self-test when they are switched on. The voltage detector only gives a ready signal if this test is successful and the device is working properly. So the user can be absolutely certain that the voltage detector is functioning as it should. A reference measurement is not required.

Double certainty

A clear indication of the test result is essential to prevent accidents. That is why PFISTERER uses the proven dual visual and acoustic signalling system in the KP-Test 5. If no operating voltage is present, the detector shows a green continuous light without a signal tone. But if "operating voltage is present", six red LEDs flash and a signal tone sounds.

Equipped for every task

Whether in confined spaces or outdoors, in sunshine or rain, snow or frost – the KP-Test 5 delivers reliable results in all environmental conditions. Extra powerful LEDs ensure a clearly visible signal – even against bright lights or in strong sunlight. The acoustic signal can be clearly heard even in noisy or windy environments due to its volume and frequency range.



„Operating voltage present“ or „no voltage“:
a clear result using the KP-Test 5 by PFISTERER.

Benefits

- Reliable self-test
- No reference measurement required
- Clear signalling
- Visual and acoustic signal
- Use in any weather
- Tested to EN 61243-1
- Multilingual device labelling



KP-Test 5: medium-voltage detector for indoor and outdoor use.



Green Light

No operating voltage present: KP-Test 5 shows a green continuous light without a signal tone.

Multilingual device labelling

The new device labelling is intuitive and multilingual. Pictograms provide a rapid overview of applications and usage. So user errors are prevented – even across language barriers.

KP-Test 5 in figures

- Rated voltage: 1 – 420 kV AC
- Rated frequency: 16,7 / 50 Hz

Indication group I
 Category S

Next inspection 2025

Serial number 133961
 Year of production 2019
 Minimum of insulating length 520mm

PFISTERER

Voltage detector
 KP-Test 5

20-36KV 50 Hz



KP-Test 5

Safely check for voltage

When working on electrical systems, ensuring people's safety and preventing damage to property are top priorities. It is essential to make absolutely sure that no voltage is present. PFISTERER voltage detectors combine maximum reliability and ease of use in one device. The KP-Test 5 family results from our decades of experience in developing safety devices with a practical focus.

Reliable self-test

Voltage detectors in the KP-Test 5 series perform an automatic self-test when they are switched on. The voltage detector only gives a ready signal if this test is successful and the device is working properly. So the user can be absolutely certain that the voltage detector is functioning as it should. A reference measurement is not required.

Double certainty

A clear indication of the test result is essential to prevent accidents. That is why PFISTERER uses the proven dual visual and acoustic signalling system in the KP-Test 5. If no operating voltage is present, the detector shows a green continuous light without a signal tone. But if "operating voltage is present", six red LEDs flash and a signal tone sounds.

Equipped for every task

Whether in confined spaces or outdoors, in sunshine or rain, snow or frost – the KP-Test 5 delivers reliable results in all environmental conditions. Extra powerful LEDs ensure a clearly visible signal – even against bright lights or in strong sunlight. The acoustic signal can be clearly heard even in noisy or windy environments due to its volume and frequency range.



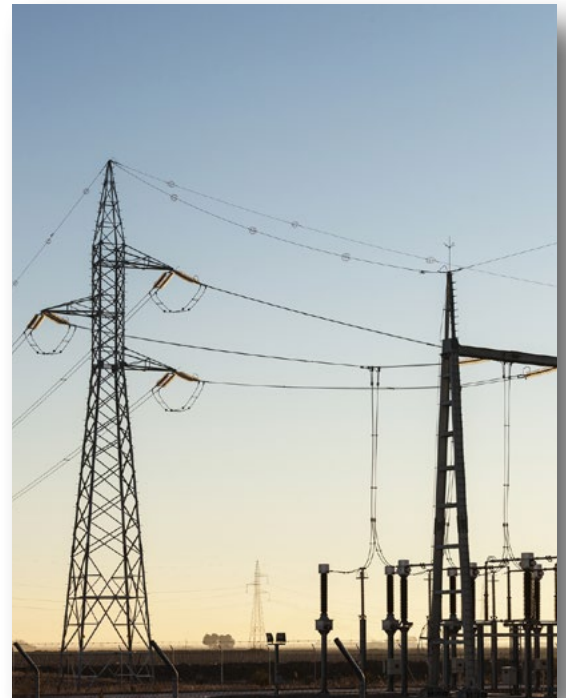
„Operating voltage present“ or „no voltage“:
a clear result using the KP-Test 5 by PFISTERER.

Benefits

- Reliable self-test
- No reference measurement required
- Clear signalling
- Visual and acoustic signal
- Use in any weather
- Tested to EN 61243-1
- Multilingual device labelling



KP-Test 5: High-voltage detectors for all applications on overhead power lines, in substations, and on railways with 16.7 and 50 Hz.



Light and sound:

The proven dual visual and acoustic signalling system clearly indicates whether voltage is present.

The right device for every application

The KP-Test 5 family offers the right voltage detector for every application. Medium or high voltage, alternating or direct current for use on overhead power lines, switchgear, in substations or on railway systems. All devices are individually adapted to our customers' requirements. PFISTERER offers solutions for all voltage levels from 1 to 420 kV AC.



Choosing the right product

Medium voltage AC

Switchgear / overhead power line (50 Hz)

Rated voltage U_N (kV)	A_i (mm)	L_H (mm)	L_i (mm)	L_o (mm)	Transportation length max. (mm)	Article no.
3	220	135	520	887	572	930 100 003 / 00020
5	220	135	520	887	572	930 100 005 / 00020
10	220	135	520	887	572	930 100 010 / 00020
5 - 6	393	135	520	1060	572	930 110 005 / 00020
10 - 12	393	135	520	1060	572	930 110 010 / 00020
13	393	135	520	1060	572	930 110 013 / 00020
20	393	135	520	1060	572	930 110 020 / 00020
3 - 10	603	135	520	1270	748	930 120 003 / 00020
5 - 10	603	135	520	1270	748	930 120 005 / 00020
10 - 20	603	135	520	1270	748	930 120 010 / 00020
10 - 30	910	288	520	1730	1055	930 140 010 / 00020
20 - 36	910	288	520	1730	1055	930 140 020 / 00020

Outer-cone plug with voltage tap (HD 629-1)

3,6 - 6	220	135	520	887	572	930 190 001 / 00639
10 - 24	220	135	520	887	572	930 190 001 / 00640
10 - 36	220	135	520	887	572	930 190 001 / 00641
20 - 36	220	135	520	887	572	930 190 001 / 00642

High voltage AC

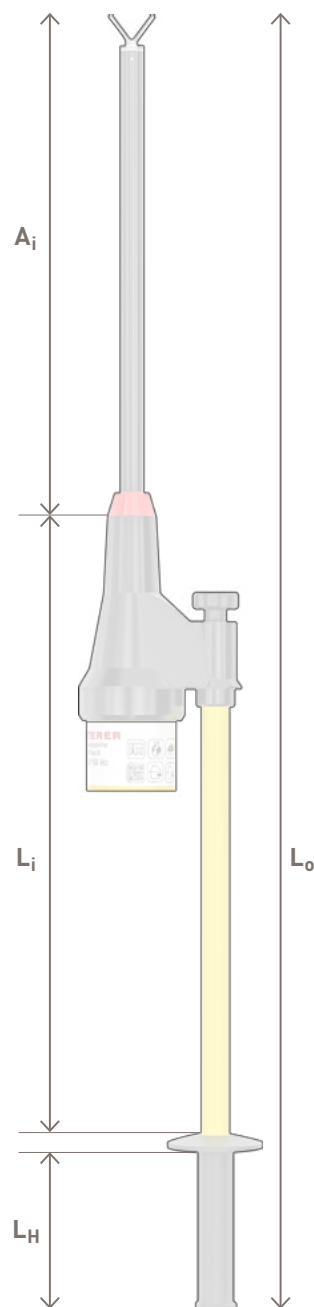
Switchgear / overhead power line (50 Hz)

Rated voltage U_N (kV)	A_i (mm)	L_i (mm)	L_o (mm)	Transportation length max. (mm)	Article no.
50 - 110	898	1802	3700	1855	930 250 001 / 00410
60 - 110	898	1802	3875	1855	930 250 001 / 00447
110	898	1802	3875	1802	930 250 001 / 00439
110 - 220	898	2520	4593	1802	930 250 001 / 00367
220 - 420	898	3850	5748	2050	930 250 001 / 00312

Overhead power line | Railway (16,7 Hz and 50 Hz)

110	898	1802	3700	1855	930 250 001 / 00455
66 - 132	898	1802	3700	1855	930 250 001 / 00449

further rated voltages are available on request



Accessories for Voltage Detectors

Description	A_i (mm)	Number of insulating poles	Transportation length max. L_i (mm)	Article no.
Storage Bag	393	-	-	364 887 002
Storage Bag	910	-	-	364 887 003
Storage Bag	-	1	1500	364 857 001
Storage Bag	-	2	1300	364 858 002
Storage Bag	-	2	1900	364 859 001
Storage Bag	-	3	2100	364 859 002
Storage Bag	-	2	1600	364 859 003
Storage Bag	393	-	-	900 073 006
Storage Bag	603	-	-	900 073 005

PFISTERER Holding AG

Rosenstraße 44
73650 Winterbach
Germany
Phone: +49 7181 7005 0
Fax: +49 7181 7005 565
info@pfisterer.com
www.pfisterer.com

100
YEARS
PFISTERER
SINCE 1921

In 1921, Karl Pfisterer founded his factory in Stuttgart for special electrical products with the aim of improving the world of power transmission. The PFISTERER Group has pursued this goal of quality and technological leadership for more than 100 years. Today, PFISTERER is one of the world's leading specialists and system suppliers for energy infrastructure – with a complete range of cable accessories, overhead line technology and components along the entire transmission chain from power generation to consumption. With state-of-the-art manufacturing processes and 1,200 employees at 18 international locations, PFISTERER not only connects the power grids of today and tomorrow, but also makes an important contribution to a sustainable and secure energy supply.