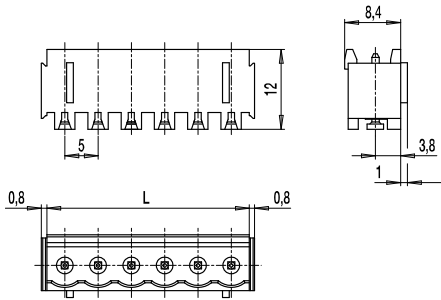
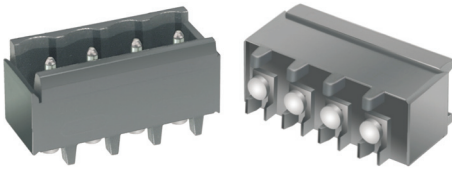
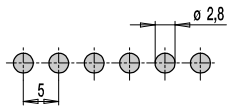


## Pin strip for SMD 120-M-221-SMD

Plug-in direction vertical to PCB, with side walls



### PCB Layout



Solder paste thickness: 0,15 - 0,2 mm  
Solder pad diameter:  $\varnothing$  2,8 mm

The PCB terminals for surface mounting comprise several types for reflow-soldering processes.

Housings out of temperature resistant plastic material and solder pins in round shape with soldering foot form the pin strips of the series of 120-M-221-SMD.

The pins are movable in vertical direction and this ensures plane positioning of the soldering feet on the soldering pads. Thus, 100% coplanarity is guaranteed.

For the automatic assembling process, all pin strip versions are packed Tape-on-Reel and are equipped with high temperature resistant Pick Caps, which can comfortably be removed after the soldering process.

### Part Numbers

No. of poles	120-M-221-SMD	Length	Pcs
2	40.806.352	10,00	200
3	40.806.353	15,00	200
4	40.806.354	20,00	100
5	40.806.355	25,00	100
6	40.806.356	30,00	100
8	40.806.358	40,00	50
10	40.806.360	50,00	50
12	40.806.362	60,00	50

further number of poles on request

### General Information

Pitch	5 mm
No. of poles	2 - 12
Usable with	all plug connectors of series 120

### Technical Data

Overvoltage Category	III	III	II
Pollution Severity Level	3	2	2
Rated Voltage	160 V	160 V	250 V
Rated Impulse Voltage	2,5 kV	2,5 kV	2,5 kV
Rated Insulation Voltage	130 V acc. to EN 60998-1		
Rated Current	12 A		
Soldering process	Reflow solder		

### Material

Moulding	PA HT, black, V-0
Comparative Tracking Index	CTI 250
Insulating Group	IIIa
Temperature Range	-40°C up to 105°C; reflow solder temperature (Peak) max. 250°C (15-30 s)
Solder pin	$\varnothing$ 1,1 mm (plug-in area); tin plated brass

### Approvals

	Current	Voltage	Group	AWG	Nm
	15	300	B		
	10	300	D		
	15	300	B		
	10	300	D, E		

### Options / Accessories

- Consecutive numbering
- Special marking according to drawing
- Self-adhesive marking strip BST-5,00 [1]

### Part Numbers: Tape-on-Reel

No. of poles	120-M-221-SMD	Tape Width	Tape Height	Pcs
2	40.806.352.A00	32 mm	17,4 mm	225
3	40.806.353.A00	32 mm	17,4 mm	225
4	40.806.354.A00	56 mm	17,4 mm	225
5	40.806.355.A00	56 mm	17,4 mm	225
6	40.806.356.A00	56 mm	17,4 mm	225
7	40.806.357.A00	56 mm	17,4 mm	225

further number of poles on request

[1] To be fitted after reflow soldering process