



MULTITRONIC 881

The motorised lock for all applications



The fully motorised multipoint locking system –

Modern living is an expression of an attitude towards life. The highest levels of convenience, maximum energy conservation and comprehensive security therefore represent the core requirements of the future home. Doors contribute significantly to achieving this.

With **multitronic 881** FUHR offers one of the most cutting-edge locking systems in its class. Whether house or apartment building, surgery or public building – **multitronic 881** is always the first choice.

Convenience

Opening and closing takes place electronically – it seems to happen by itself. As soon as the door closes the lock automatically engages quickly, reliably and securely. It is unlocked via modern access control systems depending on personal preference. The ultimate in comfort and convenience!

Security

Premium quality materials, comprehensive testing and the FUHR brand name guarantee effective security, due to a long product life and lasting reliability. Compatibility with systems meeting the highest security requirements and potential integration into monitoring systems add to the overall security.

Energy

Multipoint locking every time ensures constant impermeability. Heat remains inside the building, air-conditioned air does not escape. Precious energy is conserved, a comfortable environment is created and energy costs are reduced!

Accessibility

Fully motorised locking solutions like **multitronic 881** contribute in numerous ways to making buildings more accessible. Even barrier-free designs are no problem. **multitronic 881** permits door opening at the press of a button, handle heights as low as 850 mm, and the integration of an electrical swing door opener.



in a class of its own

Keyless opening. So convenient, so easy.



Radio key

A single radio key can be used to operate four different applications, e.g. front door, garage door, light and driveway entrance.

Convenient opening from the outside

No more tedious key turning to open a door! Now you can open doors and gates and turn lights on just by pushing a button on the radio key. Other convenient access control systems are also available, for example a fingerprint scanner – one of the most reliable and practical technologies on the market. Not forgetting the handy keyless access control systems **SmartTouch** – where a touch is all it takes to open the door – and **SmartConnect** easy, which lets you open doors with a smartphone. If there is a power cut, the door can still always be opened with a normal door key.



Simple, reliable opening from the inside

The door can be opened in seconds from the inside, too – with the lever handle, the intercom, or the wall-mounted push button that can be positioned anywhere. So doors can now be unlocked from any point in the house.

Versatility for non-residential buildings

Non-residential buildings in particular can be subject to very specialised requirements, for example they may need to be fitted with certified emergency exit doors. **multitronic 881** comes with a panic function and conforms to EN 179 and EN 1125, the mandatory standards for emergency exit locks. It features a fire-resistant design.

multitronic 881 is ideal for use with an emergency exit door control unit, even in situations where escape routes conforming to EltVTR or prEN 13637 need to be secured against intruders – so easy escape in an emergency situation and effective burglar resistance are no longer mutually exclusive attributes.



multitronic 881 can be combined with optional components to alert users both acoustically and visually if the door is unlocked. The system is superbly suited for use in buildings such as children's nurseries that are frequented by vulnerable groups, and where staff need to be alerted each time the door is opened to ensure that no one leaves the building unnoticed.



Convenience for all ages

Constructing buildings accessibly in accordance with the German standard DIN 18040 makes everyday life easier not just for children, elderly people, and those with limited mobility – but for everyone else as well. Automatic doors are appreciated today by less able-bodied people because of the ease of access they provide to rooms and buildings, and in the medium term they promise to become established as a part of modern life for everyone.

The **multitronic 881**, with its solution-oriented functions, can help in a variety of ways to make buildings accessible for

all. It comes as standard with the option of connecting an electrical swing door opener, always with unlocking and opening taking place in the correct sequence, enabling the door to be easily opened just by pressing a button or approaching the door.

Versions with a reduced handle height (850 mm) are also available, so that anyone can reach the handle to open the door.



Automatic locking for constant security that's more than just a feeling.



Day latch function



Permanent-open function

Reliable comfort

The thought 'Did I lock the door?' shortly after leaving the house has probably crossed everyone's mind at some time. FUHR **multitronic 881** renders 'forgetting' impossible. The electric multipoint locking system locks main and side entrance doors automatically. That means increased intruder protection and security standards for private and public buildings.

Intelligent control technology and connection options as standard allow for an almost unlimited freedom of design. It is for example possible to view the locking status at any time and from anywhere. The illuminated red LED light on the control unit located on the inside of the door is not the only indicator that the lock is engaged: the locking status can also be identified via bus systems connected to modern building services or building management systems.

Intelligent locking options

Depending on the project specifications, there may be a requirement to disable the entire locking system temporarily. For this purpose two optional functions are available.

When the **day latch function** is engaged, only the latch secures the door during the day time. Ideally suited to heavily frequented doors such as commercial or apartment buildings, where controlled access is required. Activation is achieved via a timer or a switch.

When the **permanent-open function** is activated, the latch and deadbolt are permanently retracted. Unimpeded access in both directions is possible without access control. Ideally suited for shops, surgeries or other buildings frequently visited by the public. In a residential setting this function is convenient if, for example, the occupant wants to go out only briefly into the garden.

The selected function is displayed via an illuminated green LED on the control unit.



Naturally these systems are also compatible with the bus systems of modern building services networks and with sophisticated building management systems.

When the door is closed, the electronic components lock it at multiple points in a matter of seconds – securely and reliably.



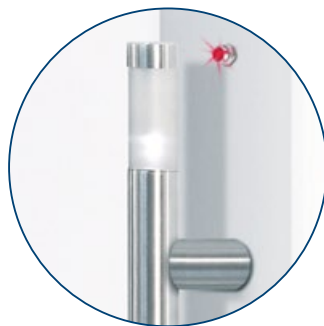
Well-equipped to fend off uninvited guests.



Almost half of all burglaries occur during the day

House and flat front doors and side doors offer a point of access not just for invited guests, but for less welcome ones too: most burglars still enter the building through a door. What many people don't know is that an alarmingly high level of burglaries occur in broad daylight. Thieves are very aware that many entrance doors are not locked at all or locked insufficiently during the day. Not so with the **multitronic 881**: it always automatically locks the door to the maximum level of security. Not only is this very convenient, but it enables the door locking status to be checked at any time – so occupants not only are secure, but feel secure as well.

Sensory monitoring of door leaf and bolt position is included as standard. This means the locking status can be verified and displayed reliably at any time.



Not only in the residential, but also in the commercial sector. Typically the locking status is indicated by an LED on the control unit on the inside of the door; however, if desired, an additional LED can be connected on the outside as well. Connection points for alarm systems and/or building management systems are also included as standard. Even remote monitoring via mobile phone, internet or WLAN is possible, taking door security to whole new levels of convenience.



The reliability of **multitronic 881** has been confirmed independently in writing. Numerous tests have confirmed a consistently high locking force. Depending on the locking type, system tests can be carried out up to resistance class 4 as per EN 1627.

The secure way to save energy.



The locking system for every season

Prudent building owners know the importance of maintaining the value of their property. They do this by choosing the right products and making the right alterations. Key areas where decisions like this are particularly important include building security, energy efficiency and sustainability.

The 2014 German Energy Saving Regulation (EnEV) has stepped up the energy efficiency requirements for buildings once again, so new build and refurbishment projects in Germany now need to take these new requirements into account.

Multipoint locking systems can help here by keeping doors tightly shut. Not only have leaky doors been shown to be a source of energy loss, but they also cause draughts and hence discomfort in the interior.

The motorised multipoint locking system **multitronic 881** supports the energy saving properties of any entrance door. It keeps the closing pressure consistently high across the entire height of the door, for lasting leaktightness and minimum warpage. Heat or air-conditioned air stays inside, heat or cold remain outside. This is also true for noise. After all, doors are a crucial link in the chain that determines how comfortable and secure people will feel inside the building.



Significant energy savings thanks to extremely tight locking of the door

Setting the pace: unbeatable speed, reliability and versatility.



Reed switch to monitor
position of door leaves



Operational reliability guaranteed
by special magnets

Quality in every detail

Trouble-free functionality

- The locking system has passed durability tests with more than 200,000 test cycles
- High-performance twin-motor principle without risk of blockage in the event of power failure, ensuring the lock can always still be operated with a key
- Due to the patented transmission clutch, inserted keys do not turn during motorised operation

Wide range of optional connections

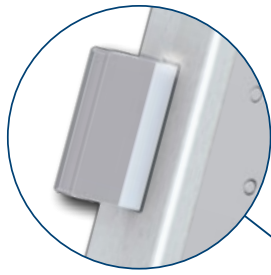
- A wide variety of components can be connected directly to the multi-functional jack located on the motorised drive mechanism. Potential-free (isolated) and powered inputs as standard as well as a fused 350mA output offer the possibility of connecting access control systems such as transponders, keypads or fingerprint scanners, or illuminated push plates and glazed components.



Powerful locking at up to seven
points for reliable burglar resistance



Optimum energy rating due to
permanent draught-proofing
thanks to adjustable strike
plates and automatic locking



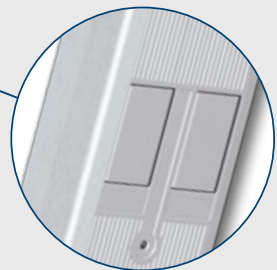
High-strength steel deadbolt and transmission elements with sensor-based monitoring of the deadbolt position



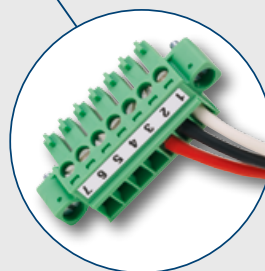
Comfortable internal lever handle opening – intuitive and certified



Patented transmission clutch reduces cylinder wear to a minimum



Patented twin-motor concept for fast, powerful locking and unlocking in less than a second, proven by testing to withstand 500,000 operating cycles



Universal connections directly into the motor terminal block

Beautifully easy to operate.

Intelligent control technology for all system requirements

The core of the motorised locking system **multitronic 881** consists of intelligent control technology that combines convenience and security effortlessly. It is preconfigured for a range of system requirements and degrees of complexity. Perfectly suited for use in residential and non-residential properties – in short, anywhere where flexibility is a must.

Multi-functional control

- Visual locking status indicator
- Integrated, removable radio receiver for all FUHR radio access control systems
- Can be used to control any function because it includes inputs and outputs for the following as standard:
 - Access control systems such as transponders, numeric keypads, fingerprint scanners, eye scanners, etc.
 - Intercom systems
 - Building management systems
 - Tamper signal for alarm systems
 - Electronic deactivation of access control systems for alarm systems
 - Control pulse for electrical swing door opener
 - Day latch function/permanent-open function
- Superbly easy to fit thanks to self-securing plug-in connectors



- Control switch
- Radio receiver
- Intercom
- Alarm system
- Building management system
- Swing door opener
- Access control systems
- Timer
- Activation of intruder alarm

It doesn't get any easier than this.

Convenient opening by radio signal

Where only a radio signal is needed to open the door, this patented radio module, which plugs conveniently onto the motorised drive mechanism, is all that is required. A separate control unit is not necessary. It is compatible with all FUHR access control systems, demonstrating once again how smart technology can make for blissfully easy operation. You can find a detailed description of the radio receiver module on page 27.



Install, connect, finished

FUHR **multitronic 881** is always the first choice for sophisticated applications. Its intelligent technology and modular system are versatile and suitable for all applications and door materials (uPVC, aluminium and timber).

The standard model comes in a complete kit including all system components, all ready to connect and all integrable into the door. In this way the manufacturer can supply a door whose functions have already been fully tested. Install, connect, and you're finished!

The complete kit is as easy to order as it is to install. All components can be pre-installed at the door factory, ready to connect. When the door arrives on site it merely has to be connected to a 230 V power supply. The kit includes 3 radio keys, one of which is a master key.

-  Complete kit
-  Plug & Play
-  All components integrated into door
-  Function checked



The sophisticated system for all eventualities.

All applications easily implemented

The modular format with its individual components is ideally suited to implementing project-specific requirements. It is also perfect for retrofitting and integration into existing buildings. All system components are effortless to fit and the electrical installation is very straightforward. Adding further functions later on is also no problem. We also offer bespoke solutions for a vast variety of requirements and would be pleased to assist and advise you.



More installation examples

Mains adapter for rail mounting plus radio receiver module



Control box with integrated mains adapter for wall mounting



Control box and mains adapter for rail mounting in the electrical cabinet



Opening the door to a keyless future. FUHR access control systems.



No more searching for the right key – a transponder in your pocket is all you need for convenient keyless door opening like in a car. Approach, touch, step inside – that's all there is to it.

SmartTouch comfort access system

SmartTouch is pioneering electronic locking technology designed to make life even more convenient for users of the **multitronic 881** motorised multipoint locking system. All you need is an active transponder in your pocket – you can then open the door just by moving towards it and gently touching a sensor. The system independently determines the user's access rights.

SmartTouch from FUHR is suitable for use in both residential and non-residential buildings. It keeps intruders firmly at bay thanks to its highly secure signal encryption.

The detection range of the **SmartTouch** transponder can be adapted to users' individual requirements.

The very slim stainless steel design of the sensor cover will match any door finish and is compatible with all standard door materials. It is weather-resistant and requires no maintenance.

SmartTouch comfort access system

Set consisting of a **Smart** radio module, sensor and master transponder.



SmartTouch door handles

In addition to the standard version with a separate sensor, a series of round and rectangular stainless steel door handles with integrated **SmartTouch** sensor are also available. Here the sensor is concealed on the back of the handle.

The range also includes matching mounting sets for fitting the handle to the door leaf or infill panel.



Ideal for smart door opening: SmartConnect easy comfort access system



The optional **Smart** radio module lets users check the status of the door lock from their smartphone.



SmartConnect easy

The intelligent **SmartConnect** easy access control system lets users open doors with a smartphone. If desired it can also be connected to the internet or an existing WLAN network. The system features a user-friendly app from which users can control a door from wherever they are. Its state-of-the-art, highly secure WLAN technology can be used for controlling not just FUHR motorised locks, but also garage doors, electric door openers, roller

shutters, lighting, and much more. And **SmartConnect** easy is not just extremely convenient – it is also very secure indeed. The type of encryption – SSL – used for secure communication between the smartphone and **SmartConnect** easy is the same as that used by online banking services.

And **SmartConnect** easy is as simple to connect (no cables required!) as it is to

operate. The WLAN communication module just needs to be connected to a standard electric plug socket, making **SmartConnect** easy perfect for retrofitting too.

For even greater convenience and security, **SmartConnect** easy is also available as a set that additionally includes a **Smart** radio module, for monitoring the lock and providing feedback about whether or not it is secured.



You can find more information on our website at www.smart-door.net



Quick and simple to fit: the WLAN communication module just needs to be connected to a standard electric plug socket.

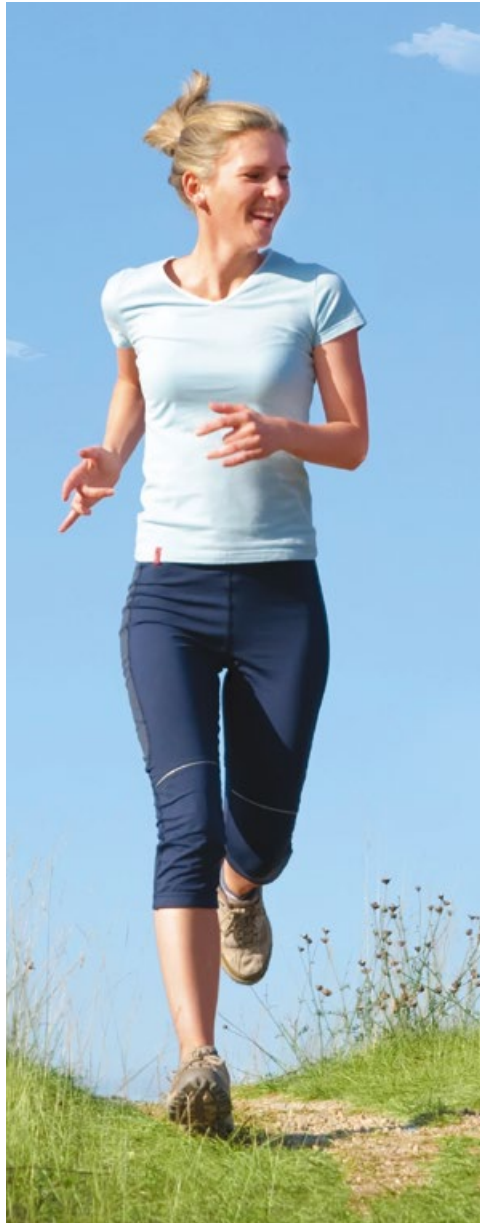


SmartConnect easy WLAN communication module

State-of-the-art 2-channel radio access control components for outstanding convenience.

Finally – no more cumbersome bunches of keys

As well as the radio keys supplied as standard, further radio-based access control systems are also optionally available, to meet consumers' increasing need for convenience in every aspect of their lives. The radio fingerprint scanner, the radio keypad and the radio transponder offer superbly convenient keyless operation while meeting the very highest security standards – making bulky bunches of keys a thing of the past.



Radio fingerprint scanner

Keyless biometric access control system with 2-channel technology for opening e.g. front door and garage. Very easy to add and delete access rights via the master finger.



Radio keypad

Allows users to open residential and garage doors by entering two individually-selectable 4-8 digit codes. With separate button for a radio gong.



Simply convenient

- Lost or forgotten keys are a thing of the past
- No more getting locked out – you always have your 'key' with you
- No need to get extra keys cut – you can easily assign additional access rights yourself
- No more carrying unwieldy bunches of keys around – particularly convenient for runners/athletes
- 2-channel technology, e.g. for opening front door and garage
- All components are very compact and can be installed directly in door leaf
- Suitable for any door – uPVC, aluminium or timber



Radio transponder reader

Easy opening of residential and garage doors simply by holding a transponder in front of the reader. Set consisting of two master and three user transponders. 2-channel technology.



Security through quality: optional radio access control systems.



SmartConnect easy

- For convenient door opening using a smartphone
- Intelligent, WLAN-based access control system
- Convenient operation of the FUHR motorised multipoint locking systems
- 'Smart home' style remote control of garage doors, driveway gates, electric door openers, lighting, roller shutters, radio gongs, and much more
- Compatible with all FUHR radio receivers
- Easy to install, no cables required – fits any 230-volt Schuko plug socket
- Very secure thanks to SSL encryption
- Communicates via home local area network and internet
- Password-protected administration area
- Individual administration of up to 200 users
- Temporary access control
- Logs access operations, changes and settings – can store up to 1,000 entries
- Intuitive app for iOS and Android
- Add functions by downloading updates – for the latest information visit www.smart-door.net
- Article no. NB821

SmartConnect easy comfortset

- Set consisting of **SmartConnect easy**, **Smart** radio module and master transponder
- The **Smart** radio module unlocks and monitors the FUHR motorised lock and transmits feedback to the smartphone about whether or not the motor has locked it
- Article no. NB820

SmartTouch comfort access system

- Innovative electronic access control system for keyless access like in a car
- Convenient door opening: simply step within range, touch the sensor, and step inside
- All you need is an active transponder in your pocket – you can then open the door just by moving towards it and gently touching a sensor
- Set consisting of a **Smart** radio module, sensor with stainless steel cover, and master transponder
- Highly secure encryption
- Master key principle protects against unauthorised pairing and unpairing of transponders
- Can be paired with up to 200 user transponders
- The **SmartTouch** sensor prevents the door from being opened accidentally
- The detection range of the **SmartTouch** transponder can be changed as required
- Also suitable for integration in door handles
- Article no. NB506NR



Radio fingerprint scanner

- Keyless biometric access control system
- Versatile 2-channel technology for opening e.g. front door and garage door
- Very easy to add and delete access rights (200 fingers) via the master finger
- Highly secure encryption: opening pulse is generated by rolling-code technology
- Forgery, sabotage and tamper-proof – the data collected are immediately electronically converted to a different form
- Sturdy thermal line sensor – resistant to environmental influences such as humidity, dirt and oil
- LED indicator to assist in operation and programming
- Ergonomically shaped and illuminated scanner surface facilitates precise finger identification
- High-grade, very slim stainless steel cover
- Ready to plug into power supply of motorised drive mechanism
- Very compact – can be installed directly in door leaf
- Electronics sealed to protect against weather and tampering
- Article no. NB649N



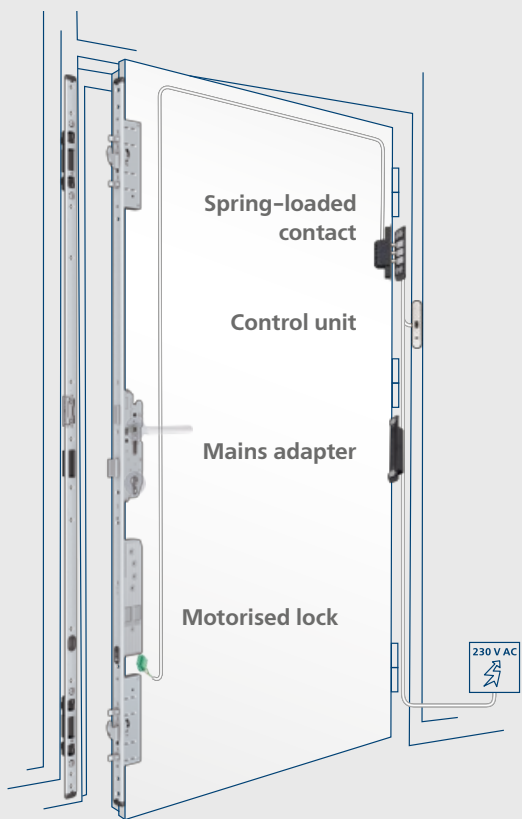
Radio keypad

- Keyless access control system for convenient door opening at the touch of a button
- Versatile 2-channel technology for opening e.g. front door and garage door
- Special third channel for ringing the radio gong (available as an accessory)
- User-defined 4- to 8-digit opening code
- Highly secure encryption: opening pulse is generated by rolling-code technology
- For security, keypad is temporarily locked in case of tampering
- Codes are not lost if there is a power cut
- Keypad can be illuminated at the push of a button
- High-grade stainless steel keypad
- LED indicator to assist in operation and programming
- Ready to plug into power supply of motorised drive mechanism
- Very compact – can be installed directly in door leaf
- Electronics sealed to protect against weather and tampering
- Article no. NB702N



Radio transponder reader

- Passive transponder access control system
- Includes 2 master and 3 user transponders
- Versatile 2-channel technology for opening e.g. front door and garage door
- Very easy to add and delete access rights (200 transponders) via the master transponder
- Highly secure encryption: opening pulse is generated by rolling-code technology
- Forgery and sabotage-proof
- LED indicator to assist in operation and programming
- High-grade, very slim stainless steel cover
- Ready to plug into power supply of motorised drive mechanism
- Very compact – can be installed directly in door leaf
- Electronics sealed to protect against weather and tampering
- Article no. NB693N



Quality supplied as standard for simple Plug & Play installation

The **multitronic** complete kit is all-inclusive. All lock, motorised drive mechanism and accessory components are perfectly matched to one another and, thanks to the pre-assembled plug-in connectors, mounting is easy too.

Unique lock technology

- With integrated panic function for convenient and exceptionally smooth handle opening
- Keys do not swing about when the lock is activated with the motor
- Premium quality steel deadbolt and latch

Twin motor

- High performance transmission with two motorised drive mechanisms for fast, powerful locking and unlocking
- Includes multi-functional jack with inputs and outputs for:
 - Access control systems such as transponders, fingerprint scanners, keypads, etc.
 - 12 V DC power supply for illuminated door panels, push plates, or access control systems



Multi-functional control

- Very slim, stylish design – just 3.5 mm high
- Suitable for use with internal hinges
- Can be installed in the rebate area if desired
- Premium quality brushed stainless steel cover
- Visual locking status indicator
- Integrated, removable radio receiver
- Can be used to control any function because it includes inputs and outputs for the following as standard:
 - Access control systems such as transponders, numeric keypads, fingerprint scanners, eye scanners, etc.
 - Intercom systems
 - Building management systems
 - Tamper signal for alarm systems
 - Electronic deactivation of access control systems for alarm systems
 - Control pulse for electrical swing door openers
 - Day latch function/permanent-open function
- Superbly easy to fit thanks to self-securing plug-in connectors

Strike plates/one-piece strike plate

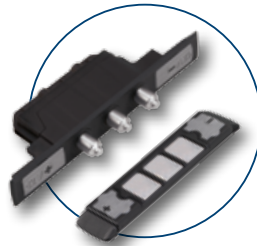
- Depending on the profile, individual strike plates or a one-piece strike plate including magnet contact is supplied. The locking action is triggered by the detection of the magnet contact by the sensor on the motorised drive mechanism.

The Complete Kit at a glance.



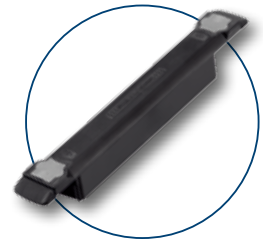
Radio keys

- 3 keys included – 1 master and 2 user radio keys
- Prevents replay attacks thanks to use of master keys
- Replay attacks are prevented thanks to rolling-code technology, which changes the code each time a radio signal is transmitted
- 3-channel technology allows e.g. front door, garage and gate to be opened with a single radio key
- Long transmission range
- Includes long-lasting battery
- Sliding cover to prevent accidental operation
- LED indicator



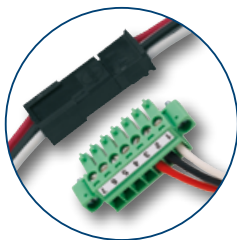
Spring-loaded contacts

- For wireless power and data transfer
- With multi-functional jack for connection to the motor
- Durable and reliable due to 3 non-wearing spring-loaded contacts
- Concealed – no visible cable run
- No cable breakage
- Door leaf can be hung and removed at any time
- Vandalism-proof
- No restriction of opening angle
- Profile-specific designs – for use with conventional and concealed hinges



Electronically-controlled transformer

- Input 230 V AC/output 12 V DC
- Output current: 2 A at 100% duty cycle | 3 A at 5% duty cycle
- Fully-electronic cutout to prevent short circuits and overloads
- Casing fully sealed for maximum safety
- Compact design
- Profile-specific designs
- VDE tested



Plug-in connectors

- All components are pre-assembled with cable connections and plug-in connectors
- Twist-proof, self-securing and shock-resistant
- Superbly easy to fit



Optimised cable guides

- Cable guide plates prevent potential cable damage during fixing
- Cover faceplates with angled caps conceal all wiring for a clean, attractive rebate
- Rubber protective bushes cover any sharp-edged drill holes



Installation and maintenance accessories

- Detailed installation, operating and maintenance instructions including profile-specific cut-out templates
- Contact grease for applying to the contact surfaces for perfect contact with the spring-loaded contacts at all times

Components and accessories for adding further functions.



Control switch for special functions

- For manual activation of the day latch and/or permanent-open function (not permissible for fire resistant and smoke control doors)
- Ideal for both residential and non-residential use
- Stainless steel cover plate with slide switch and connecting cable
- Suitable for use with the multi-functional control
- Superbly easy to fit
- Article no. NZSTZ0459



Multi-functional control with control switch and pre-assembled cables

- Multi-functional control as described on p. 24, plus:
 - integrated control switch for special functions
 - pre-assembled 4-core cable, 5 m long, fitted to terminals 5 + 6 for an alarm system output and terminals 7 + 8 for a powered opening pulse
- Supplied with master radio key
- Article no. NZSTP0790



Control box

- Ideal for retrofitting
- Junction box contains:
 - Control circuit board including radio receiver. Offers all of the same functions and connection options as the multi-functional control
 - Mains adapter, input voltage: 90-265 V AC, output voltage: 12 V DC/2.1 A
- Dimensions (H x W x D): 200 x 112 x 84 mm
- Supplied with master radio key
- Article no. NZSTP497



3-channel radio key

- 3-channel technology allows e.g. front door, garage and gate to be opened with a single radio key
- Replay attacks are prevented thanks to rolling-code technology, which changes the code each time a radio signal is transmitted
- Includes long-lasting battery
- Long transmission range
- LED indicator
- Sliding cover to prevent accidental operation
- Article no. NZ80062



4-channel radio key

- 4-channel technology allows e.g. front door, side door, garage and gate to be opened with a single radio key
- Replay attacks are prevented thanks to rolling-code technology, which changes the code each time a radio signal is transmitted
- Includes long-lasting battery
- Long transmission range
- LED indicator
- Article no. NZ80182F



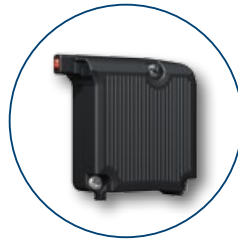
SmartTouch door handle sets

- Stainless steel door handles with integrated **SmartTouch** sensor
- Sets include **Smart** radio module and master transponder
- Standard mounting sets are available for installing the handle on the door leaf or door panel
- Other mounting sets available on request



Control unit for rail mounting

- For non-residential and retrofit projects
- Control circuit board including radio receiver. Offers all of the same functions and connection options as the multi-functional control
- For rail mounting
- For installation in the electrical cabinet
- For top hat rails of width 35 mm according to EN 50022
- Clip-on aluminium base
- Dimensions: 80 x 52 x 31 mm
- Supplied with master radio key
- Article no. NZSTP80238



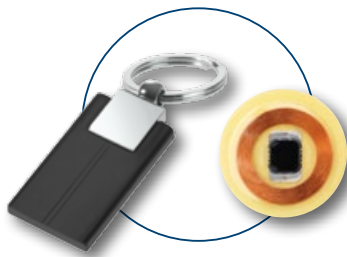
Radio receiver module

- For receiving a radio signal to open the door – with no need for a separate control unit
- Rolling-code radio receiver
- Supplied with master radio key
- Compatible with all FUHR radio access control modules
- Can be paired/unpaired with 25 transmitters via master radio key
- Clicks onto the motorised drive mechanism
- No need for an extra-long cut-out
- LED pairing button can be reached via the lock faceplate
- Connects directly to the plug on the motorised drive mechanism
- Two-wire technology is sufficient for the power supply between the mains adapter and the motorised drive mechanism
- Article no. NBFP490



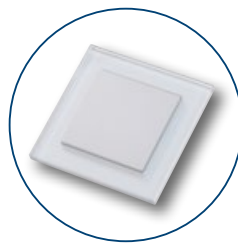
Mains adapter for rail mounting

- For non-residential and retrofit projects
- For rail mounting
- This component's compact design makes it ideal for installation in shallow electrical cabinets and fuse boxes
- Input voltage: 100-240 V AC
- Output voltage: 12 V DC/2 A
- Output voltages are adjustable to compensate for losses resulting from excessive cable lengths
- For top hat rails of width 35 mm according to EN 50022
- Dimensions: 93 x 77 x 56 mm
- CE marking
- Article no. NZT80191



Keyring user transponder

- Tamper-proof
- No batteries required
- Waterproof
- Article no. NZ80104



Wall-mounted radio push button

- Press to conveniently open the door from the inside
- Versatile 2-channel technology for opening e.g. front door and garage door
- Battery-powered – no cables to lay
- Long transmission range
- Can be mounted anywhere
- Fit using double-sided adhesive pads or screws
- Its stylish but neutral design makes it perfect for use with virtually any switch range
- Article no. NZ80021AS



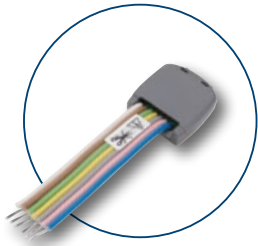
LED indicator for outside of door

- Red light is illuminated when door is closed and fully locked by the motor
- Red light flashes if access control systems have been switched off
- For checking the door status at a glance
- Deterrent to potential intruders
- Pre-assembled with plug
- For direct connection to the motorised drive mechanism
- Dimensions of the LED head: Ø 7 mm | Height 3 mm
- Dimensions of the shaft: M6 x 0.75 mm | With washer and nut
- Article no. NZ80067

Film user transponder

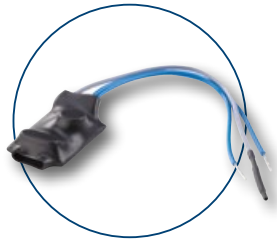
- Self-adhesive
- Thickness only 0.8 mm, diameter 20 mm
- Tamper-proof
- No batteries required
- Article no. NZ80117

Components and accessories for adding further functions.



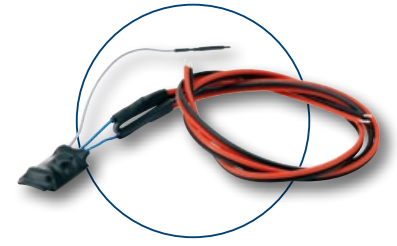
Transmitter for in-wall mounting

- Transmits a radio signal to open the door
- 4 channels
- Battery-operated
- Can be connected to any mechanically operated push button switch
- Can also be fitted in e.g. wheelchairs with a keypad integrated in the armrest
- Article no. NZ0084



Built-in transmitter for intercom systems

- For installation in intercom systems
- Transmits a radio signal to open the door when supplied with a voltage of between 5-24 V AC or 6-32 V DC
- Pre-assembled with connecting cable
- Article no. NZ80123



Built-in transmitter for follower release contact

- For use with **multitronic 881** with follower release contact
- For connecting follower release contact with motor
- Operation of the panic lever handle activates the built-in transmitter. This sends a signal to e.g. a radio gong, which emits an acoustic signal to indicate that the handle has been operated
- Transmits a radio signal when supplied with a voltage of between 5-24 V AC or 6-32 V DC
- Pre-assembled with 800 mm connecting cable
- Article no. NZ80124



Radio plug sockets

- 230 V socket that can be switched on and off from a rolling-code radio transmitter
- For use with Schuko plugs
- Simply plug in first before connecting the device that you wish to control by radio signal
- Can be paired with up to 10 FUHR radio transmitters (not compatible with **SmartTouch**, the wall-mounted radio push button, the radio transmitter for in-wall mounting, or the built-in transmitter for intercom systems)
- The paired transmitters can then be used to switch on or off any device, for example a radio key can be used to switch on a light at night-time
- Article no. NZ80134



Follower release contact

- Optional extra for **multitronic 881**
- Integrated switching contact to monitor follower
- Enables 'authorised exit' when intruder alarm is active
- Suitable for residential and non-residential sectors alike
- Also suitable for split follower
- For wired application with cable runs
- Article no. on request



Connecting cables

- Pre-assembled cable sets for specific applications
- Article no. on request



Plug socket radio receiver

- Allows an external drive mechanism, for example a drive mechanism for a garage door or for roller shutters or awnings, to be activated using rolling-code radio transmitters
- Can be paired with up to 10 FUHR radio transmitters (not compatible with **SmartTouch**, the wall-mounted radio push button, the radio transmitter for in-wall mounting, or the built-in transmitter for intercom systems)
- Preconfigured for Schuko plug sockets
- Generates a potential-free control pulse
- No separate power supply needed
- Article no. NZ80088



Universal radio receiver

- Allows an external drive mechanism, for example a drive mechanism for a garage door or for roller shutters or awnings, to be activated using rolling-code radio transmitters
- Can be paired with up to 10 FUHR radio transmitters (not compatible with **SmartTouch**, the wall-mounted radio push button, the radio transmitter for in-wall mounting, or the built-in transmitter for intercom systems)
- Generates a potential-free control pulse
- 12-24 V AC/DC external power supply required
- Article no. NZ80023



Plug socket radio gong

- Activated by a signal from a radio keypad, wall-mounted radio push button or built-in radio transmitter
- Can be paired with up to 32 FUHR radio transmitters
- Provides both a visual and an acoustic signal
- Can also be used to emit an acoustic signal when the handle is operated when **multitronic 881** is used with a follower release contact
- Preconfigured for Schuko plug sockets
- Article no. NZ80122



Surface-mounted cable run

- Chrome-plated brass
- Length: 500 mm
- Article no. NZ80089

Concealed cable run

- Chrome-plated brass
- Length: 370 mm
- Opening angle: max. 120°
- Article no. NZ80090

Fully motorised multipoint locking system for any type of door.



Description

Electric, motorised multipoint locking system with integrated panic function. Suitable for aluminium, timber or uPVC main and side entrance doors in residential and non-residential buildings.

- Auxiliary locks:
 - Type 11 – steel hook bolts with dual round bolts
 - Type 3 – steel hook bolts
 - Type 8 – steel round bolts
- Prepared for profile cylinder, only to be used with tested FZG free-running cylinders
- For use on the right or the left thanks to easily reversible latch
- Suitable for emergency exit doors according to EN 179 (Type 3, 8 and 11) and panic doors according to EN 1125 (Type 8 and 11)
- Fire-resistant design available
- Motorised drive mechanism supplied preconfigured for the connection of an LED to the outside of the door
- Integrated reed contact for motor control and alarm systems
- Easy to add FUHR radio access control systems
- The multi-functional control unit with radio receiver offers many standard connection options. For details please refer to page 24

Functionality

All locking parts automatically extend and engage when the door is closed. The door is opened from the inside by either lever handle or panic push bar. From the outside the door is opened either via an access control system (radio key, fingerprint scanner, transponder or keypad) or the cylinder key (for example in case of power failure). The panic version with split follower allows the latch to be retracted via the external lever handle.

Technical details

- **Faceplate options:** Flat 16, 20 and 24, U 22 x 6, 24 x 6 and 24 x 6.7 mm
- **Surface finishes:** FUHR-Silver and stainless steel
- **Backsets:** 35, 40, 45, 50, 55, 65 and 80 mm
- **Followers:** 8/9/10 mm continuous (panic function E), 9 mm split (panic function B1)
- **Centres:** PZ 72/92 mm, RZ 74/94 mm

Tests:

- Emergency exit doors – EN 179 and EN 1125
- ift certification scheme for multipoint locking systems (QM 342)
- Fire resistance – EN 1634-1
- Burglar resistance – EN 1627 up to RC4
- Electromechanically operated locks – EN 14846
- Technical requirements of multipoint locking systems – DIN 18251/3 up to Class 4
- Splash and dust resistance – EN 60529 – IP 54
- Temperature – EN 1121
- Electromagnetic compatibility – EN 61000
- VDE test of electrical controls – EN 60730
- User test of the German Association for Gerontechnology (GGT)
- VdS certification pending



All images and details of products, dimensions and designs were accurate at the time of going to press. We reserve the right to make changes in the interest of technical progress and advancement. Claims relating to specific models or products cannot be asserted.

Picture credit, page 5
© Photos DORMA
Picture credit, page 9
© gpointstudio - Fotolia.com - Familie
Picture credit, page 12
© Photo no. 6 DORMA; no. 7 Kaba GmbH; nos. 8 and 9 GIRA
Picture credit, page 13
© Thomas Drexel/thomas-drexel@gmx.de, Bayerische Rieswasserversorgung/www.rieswasser.de
Architecture: Obel und Partner GBR, independent architects (BDA)/www.obel-architekten.de

CARL FUHR GmbH & Co. KG
Locks and Hardware

Carl-Fuhr-Straße 12
D-42579 Heiligenhaus
Tel.: +49 2056 592-0
Fax: +49 2056 592-384
www.fuhr.de · info@fuhr.de

