

Multi-Jet dry type hot water meter improved by Teksan experience



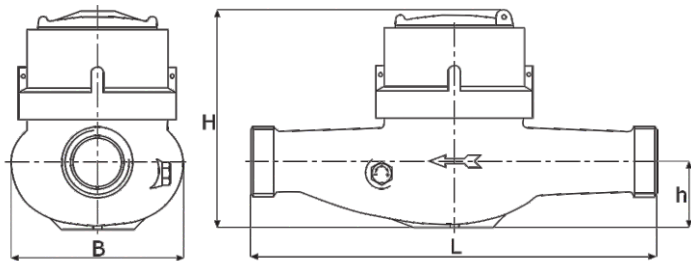
- Multi-jet dry type
- 360°C rotatable cover.
- Display on 7 drums (4 for m<sup>3</sup>, 3 for litres)
- Optional check valve
- Hermetically sealed register (IP68)
- Brass housing
- Water temperature up to 90°C



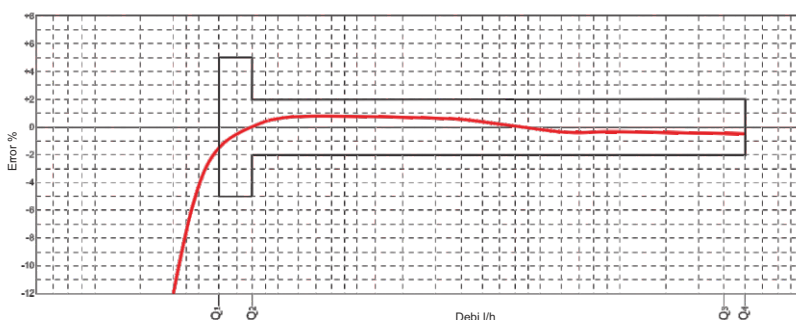
## Technical Specifications

Nominal diameter	DN	mm	15	15	20	20
Nominal flow rate	Q <sub>3</sub>	m <sup>3</sup> /h	2,5	2,5	2,5	2,5
Maximum flow rate	Q <sub>4</sub>	m <sup>3</sup> /h	3,125	3,125	3,125	3,125
Minimum flow rate	Q <sub>1</sub>	l/h	31,2	31,2	31,2	31,2
Transition flow rate	Q <sub>2</sub>	l/h	50/40	50/40	50/40	50/40
Maximum working pressure	P <sub>max</sub>	bar	16	16	16	16
Pressure loss (max. Q <sub>3</sub> )	ΔP	bar	0,63	0,63	0,63	0,40
Maximum working temperature	T <sub>max</sub>	°C	90	90	90	90
Measuring range	Q <sub>3</sub> / Q <sub>1</sub>	R	80	80	80	80
Overall length	l	mm	110	165	110	190
Maximum register indication		m <sup>3</sup>	9.999	9.999	9.999	9.999
Verification scale interval		l	0,2	0,2	0,2	0,2
Width	B	mm	83	83	83	83
Length	H	mm	105	105	105	105
Length of centerline	h	mm	31	31	31	31
Connection thread of meter	-	-	G3/4B	G3/4B	G1B	G1B
Nominal installation diameter	DN	mm	15	15	20	20
Nipel screw tube diameter	-	-	G1/2B	G1/2B	G3/4B	G3/4B
Weight	-	kg	0,860	1,150	0,860	1,120
Mounting	-	-	H	H	H	H

## Dimensions



## Error Curve



## Pressure Loss

