

Multi-Jet dry type cold water meter improved by Teksan experience

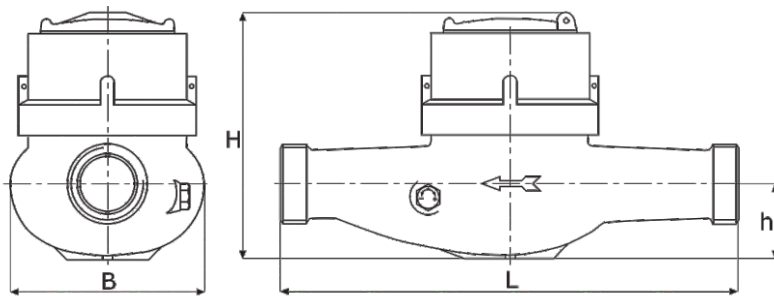


- Multi-jet dry type
- 360° C rotatable cover.
- Display on 8 drums (5 for m³, 3 for litres)
- Optional check valve
- Measuring range up to R100
- Hermetically sealed register (IP68)
- Brass housing
- Water temperature up to 50°C
- Magnetic field protection
- Optional pulse, M-bus, radio frequency output

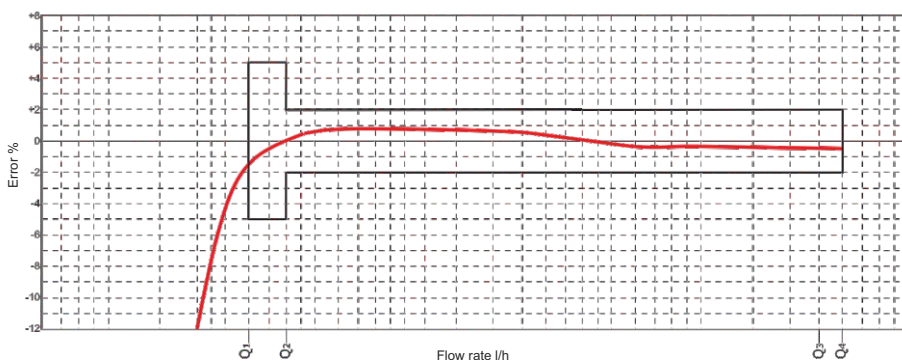
Technical Specifications

Nominal diameter	DN	mm	15	15	20	20
Nominal flow rate	Q ₃	m ³ /h	2,5	2,5	2,5	2,5
Maximum flow rate	Q ₄	m ³ /h	3,125	3,125	3,125	3,125
Minimum flow rate	Q ₁	m ³ /h	31,2/25	31,2/25	31,2/25	31,2/25
Transitional flow rate	Q ₂	m ³ /h	50/40	50/40	50/40	50/40
Maximum working pressure	P _{max}	bar	16	16	16	16
Pressure loss (max.Q3)	ΔP	bar	0,63	0,63	0,63	0,40
Maximum working temperature	T _{max}	°C	50	50	50	50
Measuring range	Q ₃ / Q ₁	R	80/100	80/100	80/100	80/100
Overall length	l	mm	110	165	110	190
Maximum register indication		m ³	9.999	9.999	9.999	9.999
Verification scale interval		l	0,05	0,05	0,05	0,05
Width	B	mm	80	80	80	80
Total Height	H	mm	90	90	90	90
Height to pipe axis	h	mm	31	31	31	31
Connection thread of meter	-	-	G3/4B	G3/4B	G1B	G1B
Nominal Size	DN	mm	15	15	20	20
Piping dimension	-	-	G1/2B	G1/2B	G3/4B	G3/4B
Weight	-	kg	0,810	1,000	0,900	1,070
Installation position	-	-	H	H	H	H

Dimensions



Error Curve



Pressure Loss

