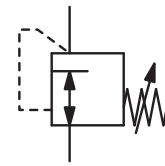


Description Low pressure regulator with large diaphragm for good accuracy and high sensitivity.
Media compressed air or non-corrosive gases
Supply pressure max. 6 bar
Air consumption without constant bleed
Adjustment R160-04: by handwheel with locknut
R160-08/-12/-16: by hexagon head screw with locknut
Relieving function non-relieving
Gauge port G $\frac{1}{4}$ on both sides of the body, screw plug supplied
Mounting position any
Temperature range -20 °C to 60 °C / -4 °F to 140 °F
Material Body: aluminium coated
O-rings: NBR/Buna-N, optionally FKM or EPDM
Diaphragm: NBR/Buna-N with PTFE coating
Inner valve: brass
Spring cage: stainless steel



G $\frac{1}{2}$ up to G2
 5...45/6000 mbar

Dimensions			K _v -value (m ³ /h)	Flow rate		Connection thread G	Pressure range mbar	Order number
A	B	C		m ³ /h*1	l/min*1			

Low pressure regulator supply pressure max. 6 bar, non-relieving, without constant bleed **R160**

80	180	37	0.4	36	600	G $\frac{1}{2}$ *3	5... 45 20... 200 150... 700	R160-04A R160-04B R160-04C
126	340	66	1.8	180	3000	G1	20... 50 50... 100 100... 700 700... 6000	R160-08A R160-08B R160-08C R160-08D
215	472	128	5.7	480	8000	G $\frac{1}{2}$	20... 50 50... 150 150... 300 300... 3000	R160-12A R160-12B R160-12C R160-12D
215	472	128	5.7	480	8000	G2	20... 50 50... 150 150... 300 300... 3000	R160-16A R160-16B R160-16C R160-16D



R160-04A
Zubehör Manometer



R160-08B
accessory: gauge

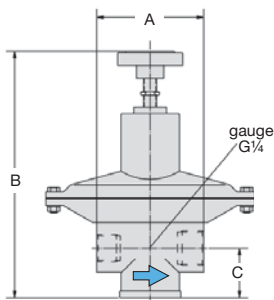
Special options, add the appropriate letter

NPT	connection thread	for G1 to G2	R160-... N
SST inner parts	for ammonia NH ₃	for G $\frac{1}{2}$ and G1	R160-... 02
FKM o-ring	PTFE diaphragm	for G $\frac{1}{2}$ and G2	R160-1... 02
EPDM o-ring			R160-... T
nitrogen N ₂ : 07	carbon dioxide CO ₂ : 03	argon Ar:	R160-... 05
helium He: 09	hydrogen H ₂ : 11	methane CH ₄ :	R160-... 13
domestic gas 14	oxygen O ₂ : 15	propane C ₃ H ₈ :	R160-... 16
		nitrous oxide N ₂ O:	R160-... 17
			R160-... F.

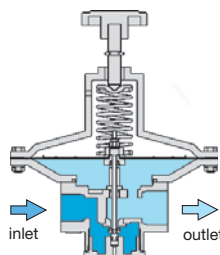
flange connection see chapter for SST devices / flange

Accessories, enclosed

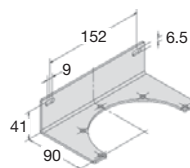
pressure gauges	Ø 63 mm, 0...*2 mbar, G $\frac{1}{4}$, capsule type, connection parts required	MA6302-... *2
connection parts	Ø 63 mm, 0...*2 bar, G $\frac{1}{4}$, Bourdon tube, connection parts required	MA6302-... *2
mounting bracket	for pressure gauge	AM-01
	made of stainless steel	BW00-26S



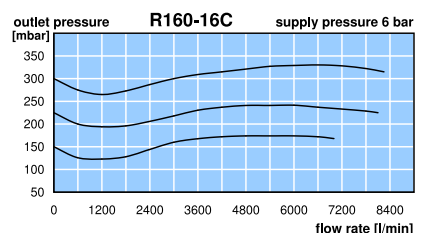
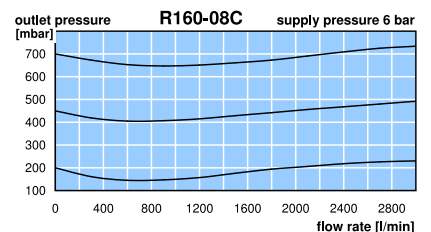
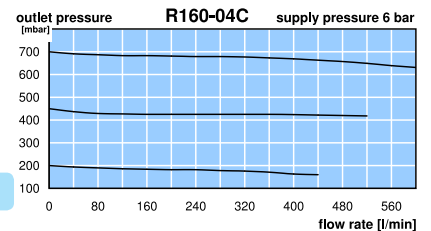
R160



cross section



BW00-26S



*1 at 6 bar supply and 1 bar outlet pressure
 *2 B6 = 0...60 mbar, C2 = 0...160 mbar, C3 = 0...250 mbar, C4 = 0...400 mbar, 01 = 0...1 bar, 04 = 0...4 bar, 06 = 0...6 bar
 *3 thread at outlet G $\frac{3}{8}$

Gauges: see chapter for measuring devices

PDF CAD
 www.aircom.net

Order example:
 R160-04A