

Bearings with Housings/Bearings

Bearings with Housings Bearings



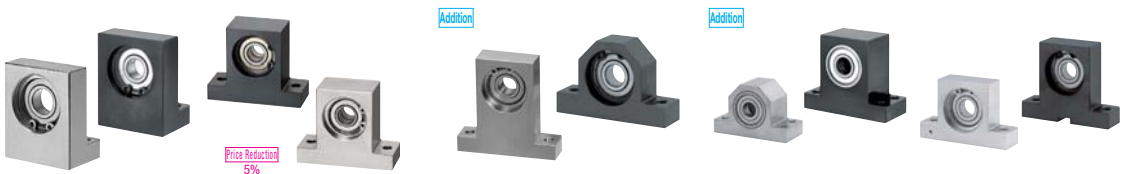
Product Name Page Bearings with Housings-Small Flanged Type- 694 -Retaining Ring Type- 695 -Inlay-Retaining Ring Type- 697 -No Retaining Ring Type- 699



-Thrust Bearing- 701 -Short Double Bearing with Retaining Ring- 702 -Double Bearing with Retaining Ring, L Selectable / Specified- 703-706 -Double Bearing without Retaining Ring, L Selectable / Specified- 707-710 -Inlay Double Bearing with Retaining Ring, L Selectable / Dimension Specified- 711-714



Inlay Double Bearing without Retaining Ring, L Selectable / Dim. Specified- 715-718 -Inlay Long Double Bearing without Retaining Ring, Dimension Specified- 719 Low Dust Raise Greased Bearings with Housings-Single and Double- 721,722



Bearings with Housings - L-Shaped- 723 -T-Shaped Short Double- 724 -T-Shaped- 725 -T-Shaped Double- 727 Locating Bearings with Housings-T-Shaped- 729



-T-Shaped Double- 730 Low Dust Raise Greased Bearings with Housings-T-Shaped- 731 -T-Shaped Double- 732 Bearings with Housings-Block- 733 -Block Double- 734



-Bottom Mount Height Selectable / Specified- 735 -Double Bottom Mount Height Selectable / Specified- 736 Bearings with Housings - Outer Ring Fixed Type- 738 -Outer Ring Fixed, Inlay Type- 739 -Outer Ring Fixed, T-Shaped Type- 740



Angular Bearing with Housing sets-Flanged Type- 742 -Angular + Deep Groove / Flanged Type- 743 -Angular + Deep Groove / Inlay Type- 745 Small / Deep Groove Ball Bearings - Double Shielded- 747, 748 Small / Deep Groove Ball Bearings - With Flange- Deep Groove Ball Bearings - Double Shielded / Open- 749 750



Small / Deep Groove Ball Bearings - Rubber Shielded- 751 Low Dust Raise Greased Ball Bearings 752 160°C Heat-Resistant Grease Filled Ball Bearings 753 230°C Heat-Resistant Grease Filled Ball Bearings 754 Bearings with Set Screws 755 1.4301/316/316L Ball Bearings for Special Environment



Resin Ball Bearings 755 Non-Grease, Non-Oil Ball Bearings for Special Environment 756 Angular Ball Bearings - Single / Double Row Combination (Standard)-Universal Combination (Precision)- 757, 758 Grease Seal Rings 758 Thrust Needle Roller Bearings 759



Thrust Ball Bearings 759 Needle Roller Bearings -With Thrust Ball Bearings- 760 -With Thrust Roller Bearings- 760 End Caps for Shafts 760 Ball Bearing Units - Pillow, Rhomb Flanged- 761 -Casting Pillow, Bottom Mount- 762



-Casting Flanged- 763 -Casting Inlay, Take-up- 764 Nuts for Bearings, Tooth Lock Washers for Bearings 765 Hard Lock Nuts for Bearings 766 Fine U Nuts® 766 Precision Lock Nuts 767



Hook Spanners for Bearing Nuts 767 Hard Lock Nuts for Bearings-Square/Hexagon Type- 768 Bearing Spacers -For Inner, Outer Ring- 769 Stopper Pins for Bearings 771



Stopper Pins for Bearings with Retaining Ring Groove 772 Cam Followers-Standard Type- 773 -Hexagon Socket Head Type- 774 Cam Followers Covered with Urethane 775 Resin Cam Followers 776 Solid Eccentric Cam Followers 776 Miniature Cam Followers 777



Brackets for Cam Followers 777 Bearing Covers 778 Roller Followers -Separate / Solid Type- 779 Roller Followers Urethane Type 780 Roller Follower Pins 780