

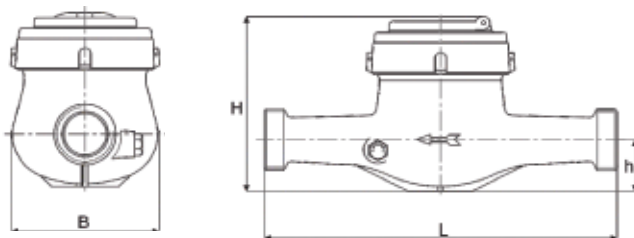


- ▣ Multi-jet wet type
- ▣ 360°C rotatable cover
- ▣ Display on 8 drums (5 for m<sup>3</sup>, 3 for litres)
- ▣ Optional check valve
- ▣ Measuring range up to R160
- ▣ Hermetically sealed register (IP68)
- ▣ Brass housing
- ▣ Water temperature up to 50°C

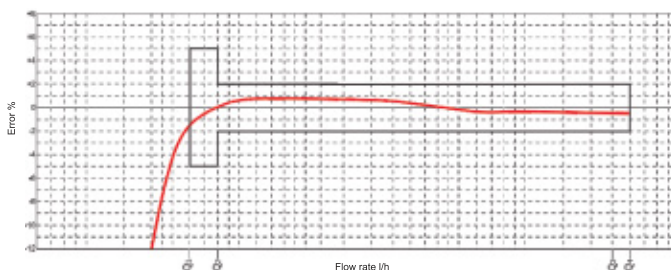
### Technical Specification

Nominal diameter	DN	mm	<b>15</b>	<b>20</b>	<b>20</b>
Nominal flow rate	Q <sub>s</sub>	m <sup>3</sup> /h	2,5	2,5	2,5
Maximum flow rate	Q <sub>4</sub>	m <sup>3</sup> /h	3,125	3,125	3,125
Minimum flow rate	Q <sub>1</sub>	l/h	31,2/25	31,2/25	31,2/25
Transitional flow rate	Q <sub>2</sub>	l/h	50/40	50/40	50/40
Maximum working pressure	P <sub>max</sub>	bar	16	16	16
Pressure loss (max.Q3)	ΔP	bar	0,40	0,40	0,40
Maximum working temperature	T <sub>max</sub>	°C	50	50	50
Measuring range	Q <sub>3</sub> /Q <sub>1</sub>	R	80/100/160	80/100/160	80/100/160
Overall length	L	mm	165	110	190
Maximum register indication		m <sup>3</sup>	99.999	99.999	99.999
Verification scale interval	I		0,05	0,05	0,05
Width	B	mm	82	82	82
Total height	H	mm	96	96	96
Height to pipe axis	h	mm	28	28	28
Connection thread of meter	-	-	G3/4B	G1B	G1B
Nominal size	DN	mm	15	20	20
Piping dimensions	-	-	G1/2B	G3/4B	G3/4B
Weight	-	kg	0,900	0,800	1,050
Installation position			H	H	H

### Dimensions



### Error Curve



### Pressure Loss

