

Multi-Jet dry type hot water meter improved by Teksan experience



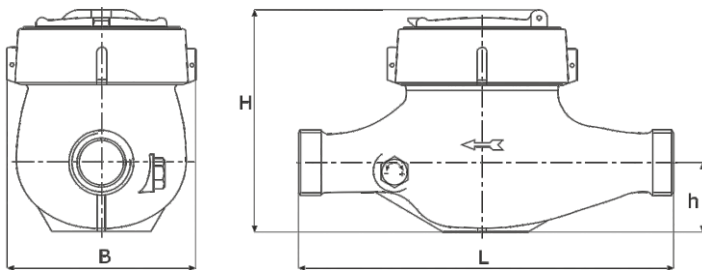
- Multi-jet dry type
- 360°C rotatable cover.
- Display on 5 drums for m³ and 4 pointers for litres
- Optional check valve
- Magnetic field protection
- Measuring range up to R80
- Optional pulse, M-bus, Radio frequency output
- Hermetically sealed register (IP68)
- Brass housing
- Water temperature up to 90°C



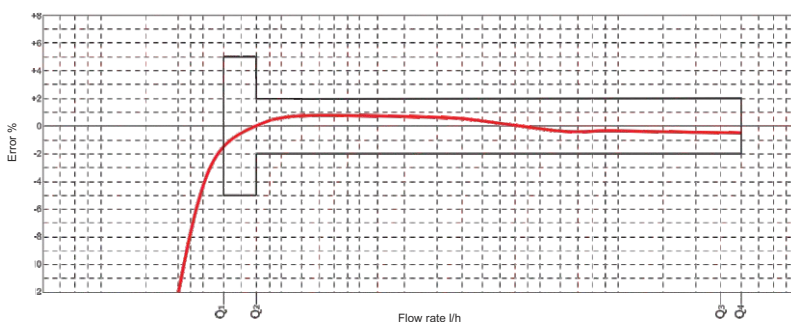
Technical Specifications

			15	20	20	20
Nominal diameter	DN	mm				
Nominal flow rate	Q ₃	m ³ /h	2,5	2,5	4	4
Maximum flow rate	Q ₄	m ³ /h	3,125	3,125	5	5
Minimum flow rate	Q ₁	l/h	31,2	31,2	50	50
Transition flow rate	Q ₂	l/h	50	50	80	80
Maximum working pressure	P _{max}	bar	16	16	16	16
Pressure loss (max.Q3)	ΔP	bar	0,4	0,4	0,63	0,63
Maximum working temperature	T _{max}	°C	90	90	90	90
Measuring range	Q ₃ / Q ₁	R	80	80	80	80
Overall length	L	mm	165	190	130	190
Maximum register indication		m ³	99.999	99.999	99.999	99.999
Verification scale interval		l	0,05	0,05	0,05	0,05
Width	B	mm	95	95	95	95
Total height	H	mm	112	112	129	112
Height to pipe axis	h	mm	34	34	37	34
Connection thread of meter	-	-	G3/4B	G1B	G1B	G1B
Nominal installation diameter	DN	mm	15	20	20	20
Piping dimensions	-	-	G1/2B	G3/4B	G3/4B	G3/4B
Weight	-	kg	1,350	1,550	1,300	1,550
Installation position	-	-	H	H	H	H

Dimensions of Meter



Error Curve



Pressure Loss

