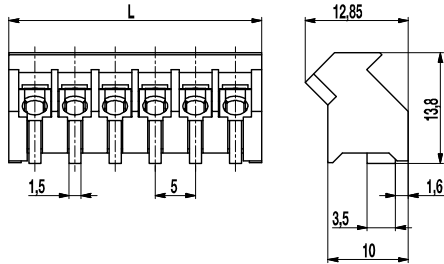
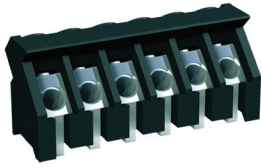


PCB connector for SMD

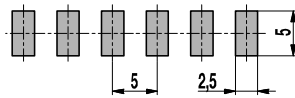
974-D-SMD-DS

Screw connection 45°-angle to PCB



$$L = \text{pole length} \times \text{pitch} + 1,5 \text{ mm}$$

PCB Layout



Solder pad thickness: 0,2 - 0,25 mm

By creating the 974-D-SMD-DS, WECO offers a PCB terminal for the reflow soldering process with a pitch of 5 mm in true surface mount technology. The wire entry has a connection angle of 45° to the PCB. This offers the advantage that terminal rows can be located space savingly one behind the other. The housing material consists of high temperature resistant plastic and is specially designed in order to assure a good hot-air circulation during the reflow soldering process in the convection oven. The wire entry side of the terminal has to be placed in flowing direction.

The screw connector 974-D-SMD-DS are standardly equipped with captive screws and wire protectors and initially available in 2 to 12 pole versions. For the automatic assembling the connector has a flat roof design in order to create a flat surface for the vacuum pipette.

Part Numbers

No. of poles	974-D-SMD-DS	Length	Pcs
2	20.874.402	11,5	250
3	20.874.403	16,5	250
4	20.874.404	21,5	200
5	20.874.405	26,5	100
6	20.874.406	31,5	100
8	20.874.408	41,5	100
10	20.874.410	51,5	100
12	20.874.412	61,5	100

further number of poles on request

General Information

Pitch	5 mm
No. of poles	2 - 12

Technical Data

Clamping Range	<i>solid / flexible / AWG</i> 0,75 - 4 mm ² / 0,75- 2,5 mm ² / 18 - 12 AWG		
Rated Cross Section	2,5 mm ²		
Wire Stripping Length	6 mm ± 0,5 mm		
Overvoltage Category	III	III	II
Pollution Severity Level	3	2	2
Rated Voltage	250 V	320 V	630 V
Rated Impulse Voltage	4 kV	4 kV	4 kV
Rated Insulation Voltage	250 V acc. to EN 60998-1		
Rated Current	24 A		
Torque	0,4 Nm		

Material

Moulding	PA HT, black, V-0
Comparative Tracking Index	CTI ≥ 600
Insulating Group	I
Temperature Range	-40°C up to 150°C; Reflow solder temperature (Peak) max. 260°C (15-30 s)
Terminal body	Tin plated brass
Screw	M3; zink plated steel, clear passivated
Wire protector	Tin plated tin bronze

Approvals

	Current	Voltage	Group	AWG	Nm
	20	300	B	18 - 12	0,4
	10	300	D	18 - 12	0,4
	20	300	B	18 - 12	0,4
	10	300	D	18 - 12	0,4

Options / Accessories

- Consecutive numbering
- Special marking according to drawing
- Self-adhesive marking strip BST-5,00 [1]

Part Numbers: Tape-on-Reel

No. of poles	974-D-SMD-DS	Tape Width	Tape Height	Pcs
2	20.874.402.A00	56 mm	14,7 mm	250
3	20.874.403.A00	56 mm	14,7 mm	250
4	20.874.404.A00	56 mm	14,7 mm	250
5	20.874.405.A00	56 mm	14,7 mm	250
6	20.874.406.A00	56 mm	14,7 mm	250

[1] To be fitted after reflow soldering process