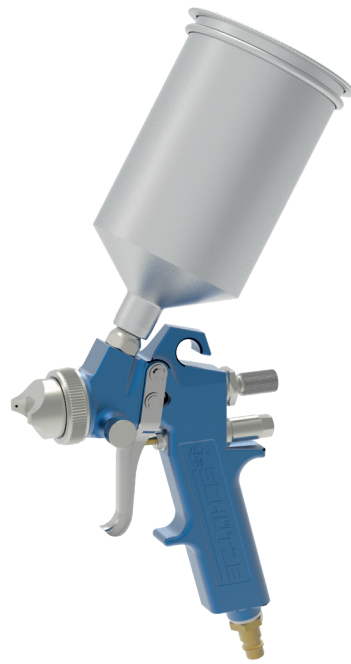


Universal-Spray gun W1

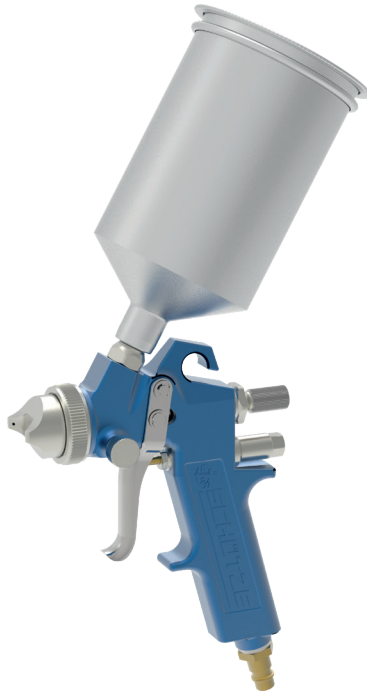


schütze
SPRAYTECHNOLOGY



Universal-Spray gun W1

The flowcup-gun for high standards



The universal-spray gun W1 is a reliable, handy spray gun for the use in industry and trade. All advantages of a modern construction are included as under:

- good and comfortable handling avoid early tiredness while spraywork
- robust construction guarantees a long and useful life of spray gun
- anodized aluminium gun body is easy to clean
- simple construction and the uncomplicated operation is very expedient
- centric nozzle seat within the aircap gives a precise and reliable sprayjet
- sprayjet can be adjusted with regulating screw from round to flatspray continuously
- gaskets made from PTFE
- nozzle and needle made from german silver (stainless steel on request)
- available nozzle dimensions:
ø 0.5 / 0.8 / 1.0 / 1.2 / 1.5 / 1.8 / 2.0 / 2.5 / 3.0 / 3.5 mm
(standard version: 1.5 mm ø)
- available flow cup sizes:
 - 0.6 ltr. aluminium with clamp lid
 - 0.6 ltr. plastic with clamp lid
 - 0.6 ltr. plastic with thread lid
 - other sizes on request
- special design:
 - special spin nozzle sets for glues etc.
 - nozzle sets with reduced air consumption (type W1 G) in 1.2G / 1.5G / 1.8G mm ø
 - "industry head"-nozzles sets
 - extensions in several versions

Technical data:

Weight:	680 g
Air consumption:	approx. 210 ltr./min. (at 4 bar and 1.5 mm nozzle)
Air pressure:	max. 8 bar
Gun body:	aluminium, blue anodized
Nozzle + needle:	german silver or stainless steel

Special designs on request.
Technical alterations reserved.
For further information please contact us.