

## Touch Operator Panels for QuickStep® and MAC motor® integrated motors



HMI-4210T



HMI-4414T



HMI-4522T

### Wide range of high quality Human machine Interface panels for use with the integrated servo and stepper motors from JVL

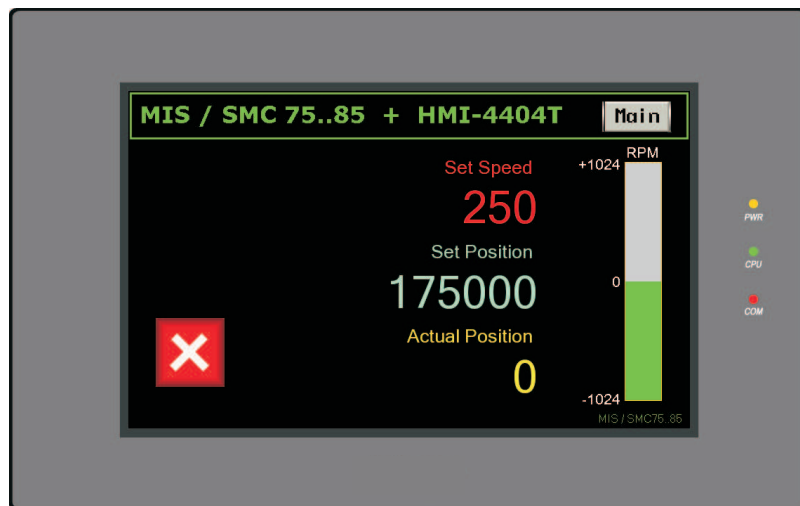
JVL now provide a wide range of excellent HMI operator panels for all our integrated motors.

Available screen sizes from 4,3" to 15" with resolutions up to 1024 x 768 (this data sheet covers models with 4,3" .. 10" screens).

Enjoy easy creation of operator screen using the EV5000 development software package for windows.

#### Highlights:

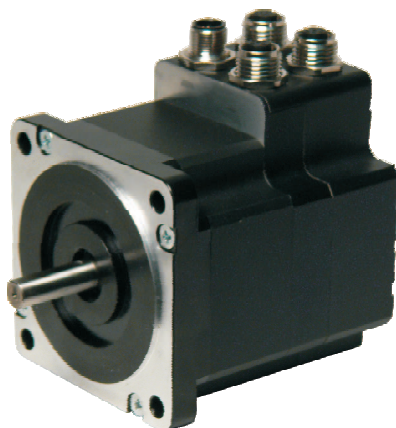
- Connects to all controller version of MIS23x and MIS34x
- Connects to all MAC050..141
- Connects to all MAC400..3000
- Easy and intuitive development software
- All functions that you would ever need, including trend graphs, alarms and recipe handling
- Advance Timer functions let you mask out individual bits in MAC/MIS/SMC78/SMC85 registers
- Need very special functionality? Just write a marco in C!
- Ultra fast boot times reduce waiting time after power on
- Good connectivity, even the smallest panels have 2 serial ports and an USB-port



	HMI-4210T	HMI-4220TE	HMI-4414T	HMI-4414TE	HMI-4522TE	HMI-6300C-CAN
Screen Type	4.3" 16:9 TFT		7" 16:9 TFT		10,1" 16:9 TFT	5.6" TFT
Resolution	480 x 272		800 x 480			320 x 234
Luminance	300 cd/m <sup>2</sup>				320 cd/m <sup>2</sup>	
Display Color	64 k color					
Back Light	LED					
Back Light Life	50000 hrs					30000 hrs
CPU	400 MHz RISC	800 MHz RISC	400 MHz RISC	800 MHz RISC	400 MHz RISC	520 MHz RISC
Memory	128 Mb Flash + 64 Mb SDRAM				16 Mb Flash + 32 Mb SDRAM	32 Mb NOR Flash + 64 Mb RAM
Expandable Memory	-	SD card + USB stick	-	SD card + USB stick	SD card + USB stick	SD card + USB stick
Recipe memory & RTC	512 kb + RTC				256 kb + RTC	512 kb + RTC
Communication Port	2 x RS232/422/485, 1 x RS232, 1 x USB slave	2 x RS232/422/485, 1 x RS232, 1 x Ethernet, 1 x USB slave, 1 x USB Host	2 x RS232/422/485, 1 x RS232, 1 x USB slave	2 x RS232/422/485, 1 x RS232, 1 x Ethernet, 1 x USB slave, 1 x USB Host	2 x RS232/422/485, 1 x RS232, 1 x Ethernet, 1 x USB slave, 1 x USB Host	2 x RS232/422/485, 1 x Ethernet, 1 x USB slave, 2 x USB Host
Printer port	Serial	Serial / USB	Serial	Serial / USB	Serial / USB	USB host
FCC compatibility	FCC Class A					
Insulation resistance	50 M @ 500 VDC					
Vibration resistance	10..25Hz (X-Y-Z, 2G, 30 min)					
Protective level	IP65 (front)					
Operating Temperature	-20..+55°C		0..+45°C			
Operational humidity	10..90% non-condensing					
Enclosure Material	ABS, black					ABS, grey
Cooling	Natural air cooling					
Expansion Slots	-					Yes for future options
Software	Proprietary					CoDeSys v2.3 SoftPLC + WinCE v5.0 (Core)
CAN open	-					Yes
Ethernet	-	Yes	-	Yes	Yes	Yes
Outside Dimensions	154 x 89 x 60 mm		204 x 150 x 37 mm		310 x 230 x 55 mm	204 x 150 x 37 mm
Cutout Size	145 x 81 mm		192 x 138 mm		298 x 218 mm	192 x 138 mm
Weight	0,34 kg		0,75 kg		2,0 kg	1,0 kg
Power (Supply 24 VDC)	3,5 W		4 W		8 W	7,2 W

## Accessories:

- HMI-SW1: Software for HMIs and MAC/MIS/SMC75 and SMC85  
HMI-USB-5M: USB-PC-LINK, 5 m cable  
HMI-SW1-USB: Combination pack of software and USB-PC-LINK



JVL Industri Elektronik A/S  
Blokken 42  
DK-3460 Birkerød, Denmark  
Tel.: +45 4582 4440  
E-mail: [jvl@jvl.dk](mailto:jvl@jvl.dk) [www.jvl.dk](http://www.jvl.dk)

JVL Deutschland  
Tel.: +49 711 5187 8564  
E-mail: [jan.tausend@jvl.dk](mailto:jan.tausend@jvl.dk)  
[www.jvl drives.de](http://www.jvl drives.de)

JVL USA  
Tel.: +1 513/877-3134  
E-mail: [mfisher@jvlusa.com](mailto:mfisher@jvlusa.com)  
[www.jvlusa.com](http://www.jvlusa.com)