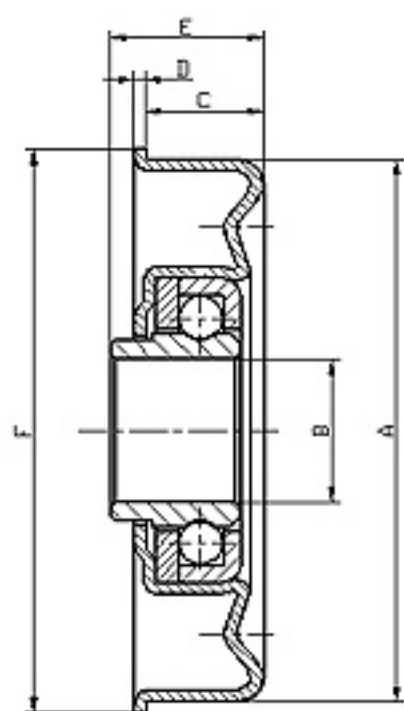


冲压轴承系列



H型



HS		外型尺寸 Outer Size (mm)					
产品系列号 Products Series No.	轴承型号 Bearing Type	A	B	C	D	E	F
HS-1	5710	57.30	10.20	12.30	1.20	16	59.20
HS-2	5715	57.30	15.10	11.50	1.20	13.70	59.50
HS-3	4012B	40.05	12.20	10.10	1	18	42.4
HS-4	27d	27.30	8.20	4.70	0.60	7.80	29.20
			10.20				
			12.20				
HS-5	37d	37.30	8.20	5.50	1.20	9.20	39.20
			10.20				
			12.20				
HS-6	47d	47.30	10.20	9.30	1.20	13	49.20
			12.20				
			15.20				
HS-7	57d	57.30	12.20	11.30	1.20	15	59.20
			15.20				
			17.20				
HS-8	56d	56.30	12.20	11.30	1.20	15	59.20
			15.20				
			17.20				
HS-9	76d	76.30	15.20	13.80	1.20	17.50	79.20
			17.20				
			20.20				
HS-10	4708C	47.30	8.20	10.30	1.20	14	49.50